

(R-88-2570)

RESOLUTION NUMBER R- 271352

ADOPTED ON JUL 5 1988

WHEREAS, Section 8330 et seq. of the California Streets and Highways Code provide a procedure for the summary vacation of streets and public service easements by City Council resolution where portions of the street to be vacated consist of excess rights-of-way no longer required for street or highway purposes; and

WHEREAS, the abutting property owners have requested the vacation of the excess portions of Pomerado Road in conjunction with Sunburst Scripps (TM 87-0883) and Scripps Eastview (TM 87-0884), to facilitate development of their properties; and

WHEREAS, those properties adjoining the street to be vacated will continue to have access; and

WHEREAS, the public will benefit from the vacation through improved utilization of land; and

WHEREAS, the vacation is not inconsistent with the General Plan or an approved Community Plan; NOW, THEREFORE,

BE IT RESOLVED, by the Council of The City of San Diego, as follows:

1. That the excess portions of Pomerado Road in conjunction with Sunburst Scripps (TM 87-0883) and Scripps Eastview (TM 87-0884), as more particularly shown on Drawing No. 24527-D, Sheets 1 through 6, on file in the office of the City Clerk as Document No. RR-271352, which is by this reference

incorporated herein and made a part hereof, be and the same is hereby ordered vacated.

2. That the resolution shall not become effective unless and until the final subdivision maps for Sunburst Scripps (TM 87-0883) and Scripps Eastview (TM 87-0884) have been approved by Council action. In the event that both of the final subdivision maps are not approved within three (3) years after adoption of this resolution, this resolution shall become void and be of no further force or effect.

3. That the City Engineer shall advise the City Clerk of the approval of the required subdivision map, and that the City Clerk shall then cause a certified copy of this resolution, with drawing, attested by him under seal, to be recorded in the office of the County Recorder.

APPROVED: John W. Witt, City Attorney

By

  
\_\_\_\_\_  
John K. Riess  
Deputy City Attorney

JKR:wk:221.1  
06/20/88  
Or.Dept:E&D  
SA:88-515  
WO:87-0883 & 87-0884  
DWG:24527-1-6-D  
R-88-2570  
Form=r.sumv2

# STREET VACATION PLAT FOR POMERADO ROAD

DOCUMENT NO. RR-271352  
 FILED JUL 5 1988  
 OFFICE OF THE CITY CLERK  
 SAN DIEGO, CALIFORNIA

**LEGEND**

1. EXISTING POMERADO ROAD PER "CO. H.H.Y. COMM. MISSION ROAD I-A."
2. PORTION OF EXISTING POMERADO ROAD VACATED
3. PROPOSED NEW POMERADO ROAD / SPRING CANYON ROAD (SEE 24470-D)
4. INDICATES SHEET NUMBER



**AREAS:**

- PARCEL A = 0.229 AC.  
 B = 0.121 AC.  
 C = 0.121 AC.  
 D = 0.165 AC.  
 E = 0.710 AC.  
 F = 0.064 AC.  
 G = 0.251 AC.  
 H = 0.255 AC.  
 I = 0.025 AC.  
 J = 0.187 AC.  
 K = 0.005 AC.  
 L = 0.297 AC.

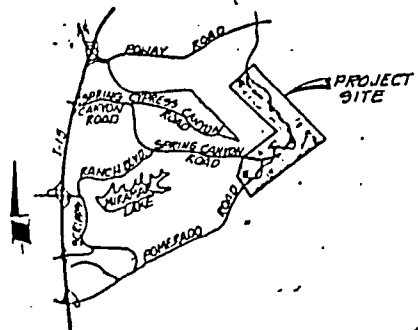
SEC. 27  
 ALIEN SEC. 26  
 VTM 87-0884

NW 1/4 SW 1/4  
**SEC. 26 T14S**

APN 320-011-01

PROPOSED SCRIPPS EASTVIEW

NE 1/4 SW 1/4



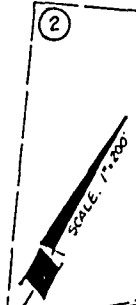
VICINITY MAP  
 N.T.S.

PROPOSED SUNBURST SCRIPPS

EXISTING POMERADO ROAD  
 PER CHC MISSION ROAD I-A

PROPOSED  
 POMERADO ROAD  
 (24470-D)

FUTURE  
 SPRING CANYON ROAD  
 (24470-D)



(2)

APN 320-040-07

(3)

APN 320-010-29

(4)

APN 320-010-27

APN 320-010-25

(5)



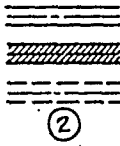
**SB & O**  
 PLANNING - DESIGN - CONSULTING  
 Civil Engineering  
 Surveying  
 Land Surveying

Samuel F. Satino  
 Samuel F. Satino  
 No. 13177  
 CIVIL  
 STATE OF CALIFORNIA

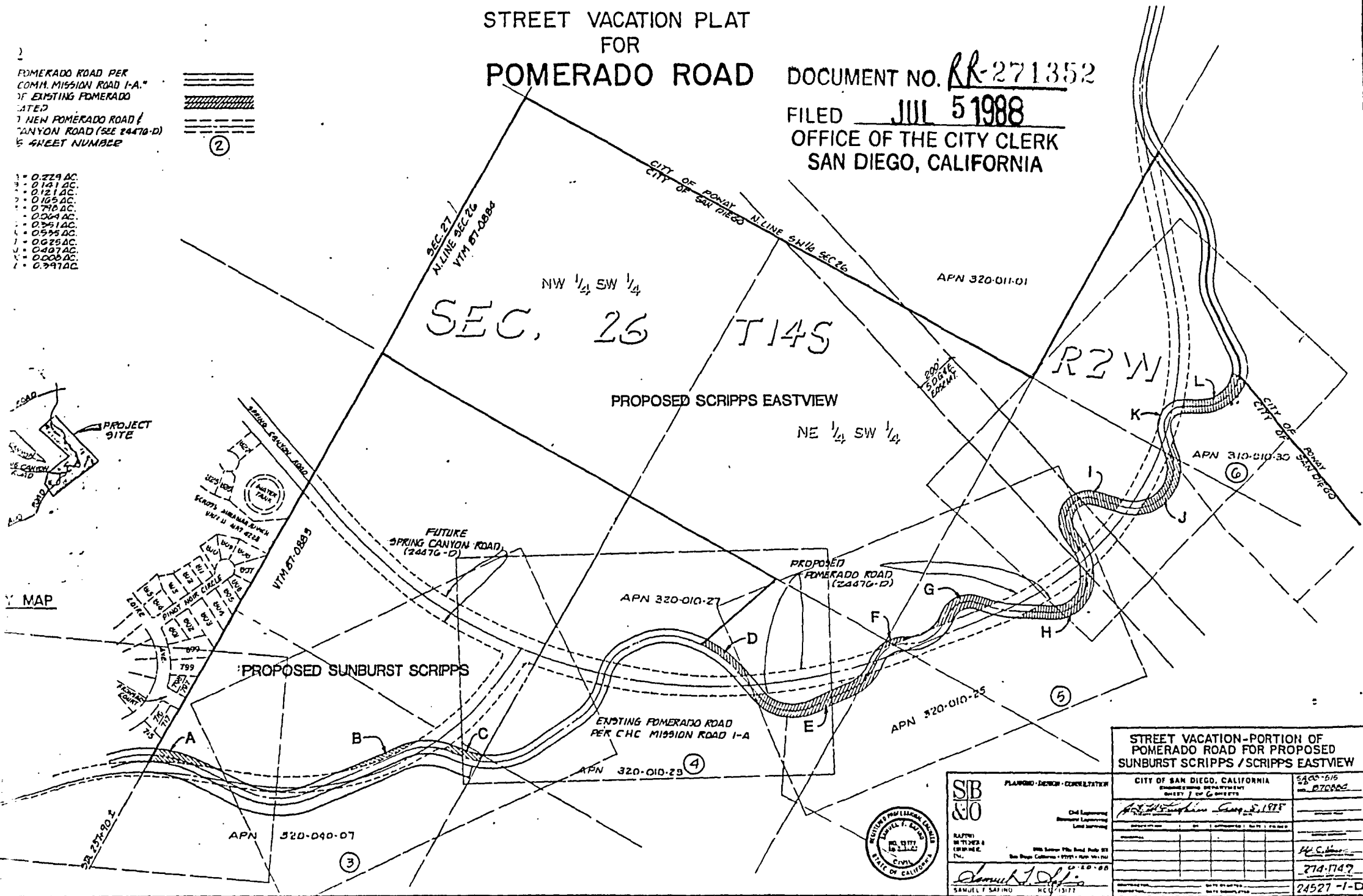
# STREET VACATION PLAT FOR POMERADO ROAD

DOCUMENT NO. RR-271352  
FILED JUL 5 1988  
OFFICE OF THE CITY CLERK  
SAN DIEGO, CALIFORNIA

2  
POMERADO ROAD PER  
COMM. MISSION ROAD I-A.  
OF EXISTING POMERADO  
DATED  
NEW POMERADO ROAD /  
CANYON ROAD (SEE 24470-D)  
SHEET NUMBER



- 1 = 0.229 AC.
- 2 = 0.141 AC.
- 3 = 0.121 AC.
- 4 = 0.165 AC.
- 5 = 0.798 AC.
- 6 = 0.264 AC.
- 7 = 0.395 AC.
- 8 = 0.575 AC.
- 9 = 0.625 AC.
- 10 = 0.407 AC.
- 11 = 0.609 AC.
- 12 = 0.397 AC.



STREET VACATION - PORTION OF POMERADO ROAD FOR PROPOSED SUNBURST SCRIPPS / SCRIPPS EASTVIEW	
CITY OF SAN DIEGO, CALIFORNIA ENGINEERING DEPARTMENT SHEET 7 OF 6 SHEETS	5400-615 REV. 870000
Civil Engineering Mechanical Engineering Land Surveying	APR 25 1988 M. C. [Signature]
PLANNING - DESIGN - CONSULTATION	271-1147
SIB & O PLANNING - DESIGN - CONSULTATION 15177 15177 CIVIL	24527-1-D



STREET VACATION PLAT

FOR

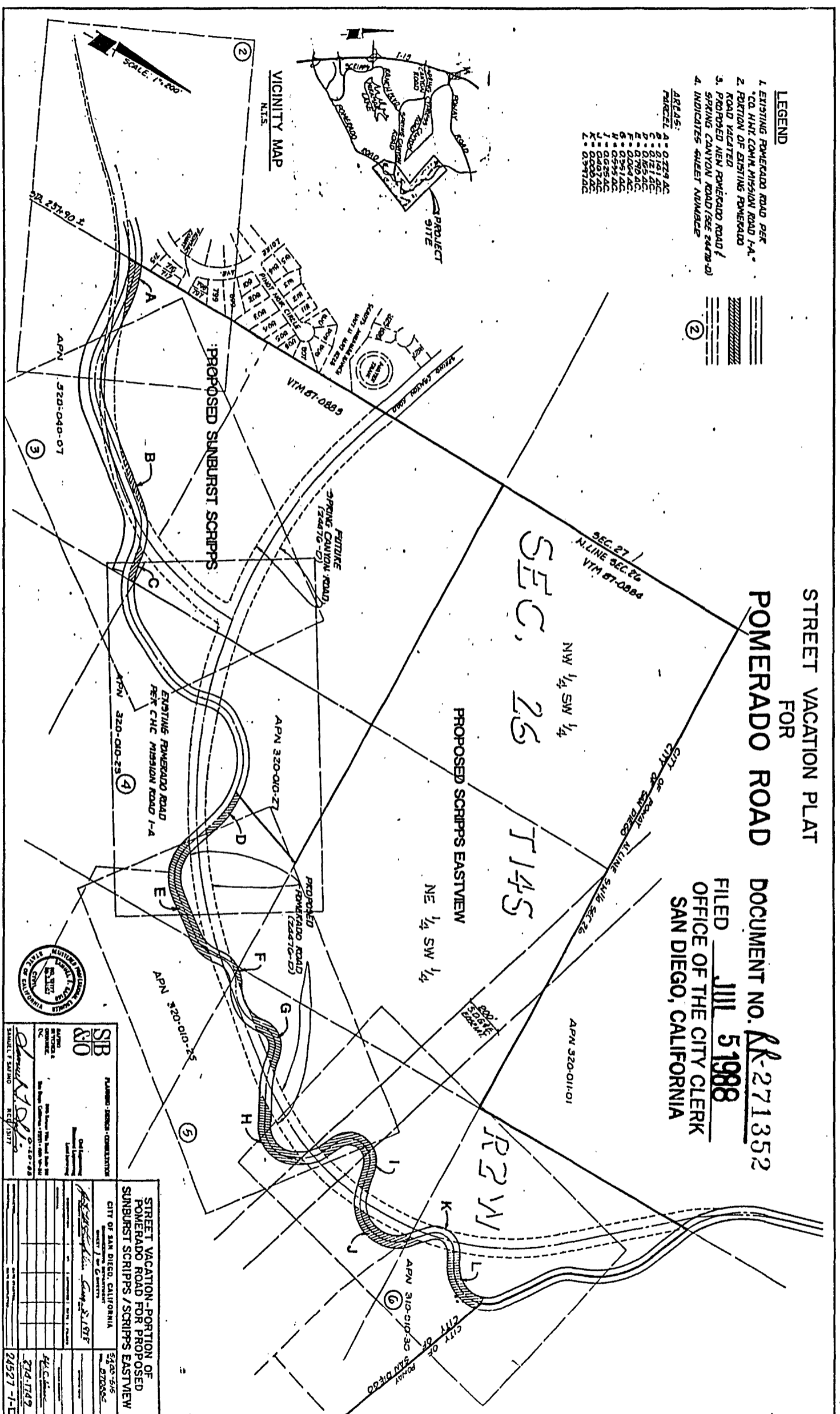
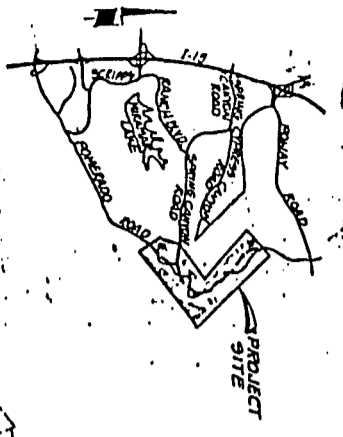
POMERADO ROAD

DOCUMENT NO. **RK-271352**

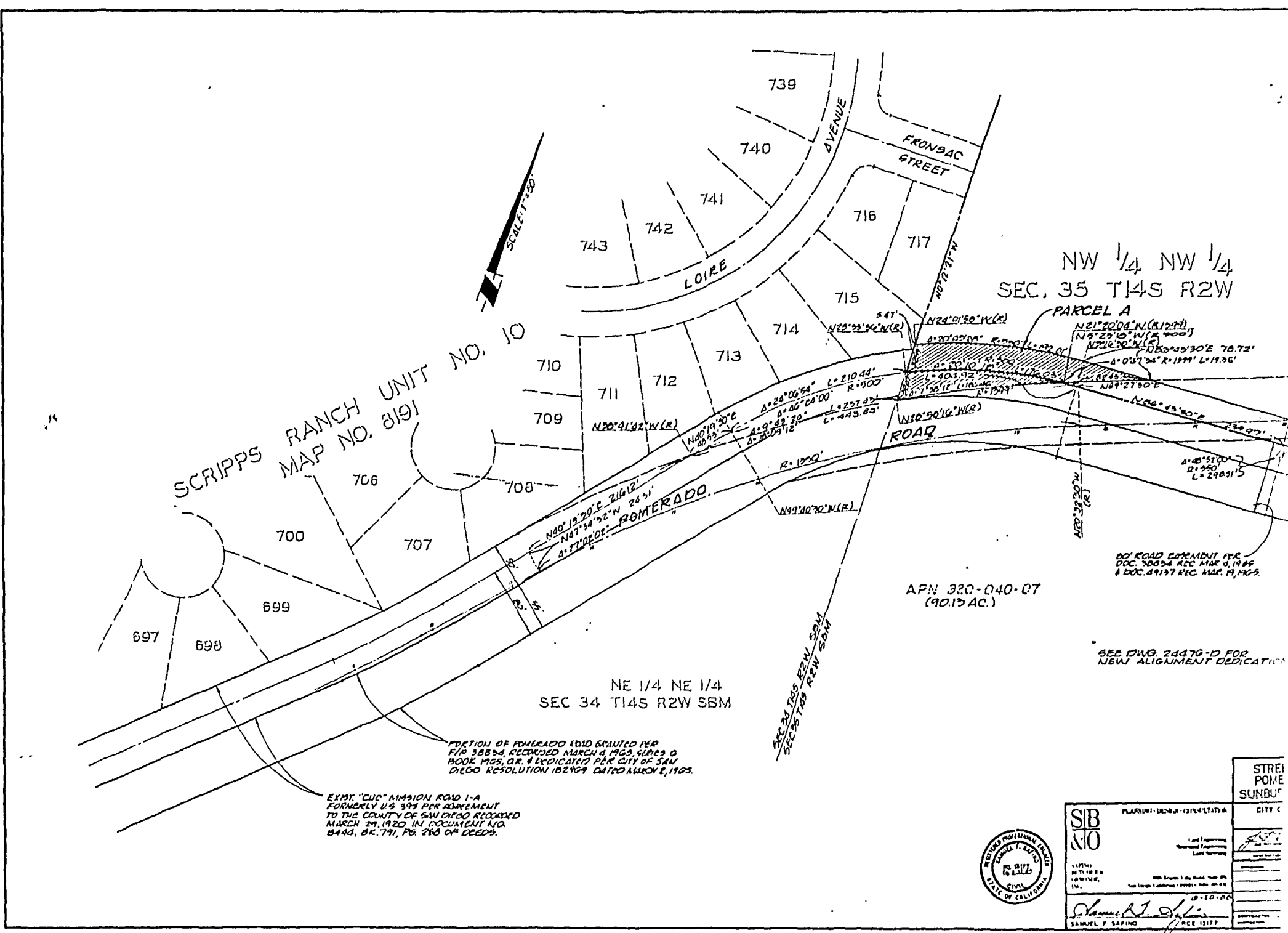
FILED **JUL 5 1988**  
 OFFICE OF THE CITY CLERK  
 SAN DIEGO, CALIFORNIA

- LEGEND**
1. EXISTING POMERADO ROAD PER "CA. HNT COMM. MISSION ROAD I-A"
  2. PORTION OF EXISTING POMERADO ROAD VACATED
  3. PROPOSED NEW POMERADO ROAD / SPRING CANYON ROAD (SEE 24478-D)
  4. INDICATES QUIET NEIGHBORHOOD
- AREAS:**
- A - 0.2729 AC
  - B - 0.1451 AC
  - C - 0.1214 AC
  - D - 0.1795 AC
  - E - 0.2064 AC
  - F - 0.3514 AC
  - G - 0.5951 AC
  - H - 0.6255 AC
  - I - 0.2024 AC
  - J - 0.2024 AC
  - K - 0.3974 AC

VICINITY MAP



<p><b>SIB</b>                  STATE OF CALIFORNIA                  COUNTY OF SAN DIEGO</p>	
<p>PLANNED - DESIGN - CONSTRUCTION</p>	<p>STREET VACATION - PORTION OF                  POMERADO ROAD FOR PROPOSED                  SUNBURST SCRIPPS / SCRIPPS EASTVIEW</p>
<p>CITY OF SAN DIEGO, CALIFORNIA</p>	<p>APNs: 320-010-02, 320-010-27, 320-010-29, 320-010-01, 320-010-30, 320-010-35</p>
<p>DATE: 7/1/88</p>	<p>SCALE: 1" = 100'</p>
<p>PROJECT NO. 24527-1-D</p>	<p>DATE: 7/1/88</p>



SCRIPPS RANCH UNIT NO. 10  
 MAP NO. 8191

NW 1/4 NW 1/4  
 SEC. 35 T14S R2W

PARCEL A  
 N21°20'04" N (R1274)  
 N6°25'10" W (R 700)  
 N71°0'00" N (R)  
 N63°45'30" E 70.72'  
 Δ 0°57'34" R 1944' L 11.76'  
 N87°21'50" E  
 N66°45'30" E  
 Δ 0°57'30" R 2350' L 29051.5'

APN 320-040-07  
 (90.15 AC.)

80' ROAD EASEMENT PER  
 DOC. 30034 REC. MAR. 6, 1945  
 & DOC. 49137 REC. MAR. 19, 1945.

SEE DWG. 24470-D FOR  
 NEW ALIGNMENT DEDICATION

NE 1/4 NE 1/4  
 SEC 34 T14S R2W SBM

PORTION OF ROMERADO RD GRANTED PER  
 F.P. 38834, RECORDED MARCH 4, 1905, SERIES G  
 BOOK 1965, OR, & DEDICATED PER CITY OF SAN  
 DIEGO RESOLUTION 182429 DATED MARCH 5, 1905.

EXIST. "CUC" MISSION ROAD 1-A  
 FORMERLY US 395 PER AGREEMENT  
 TO THE COUNTY OF SAN DIEGO RECORDED  
 MARCH 29, 1920 IN DOCUMENT NO.  
 8440, BK. 791, PG. 283 OF DEEDS.

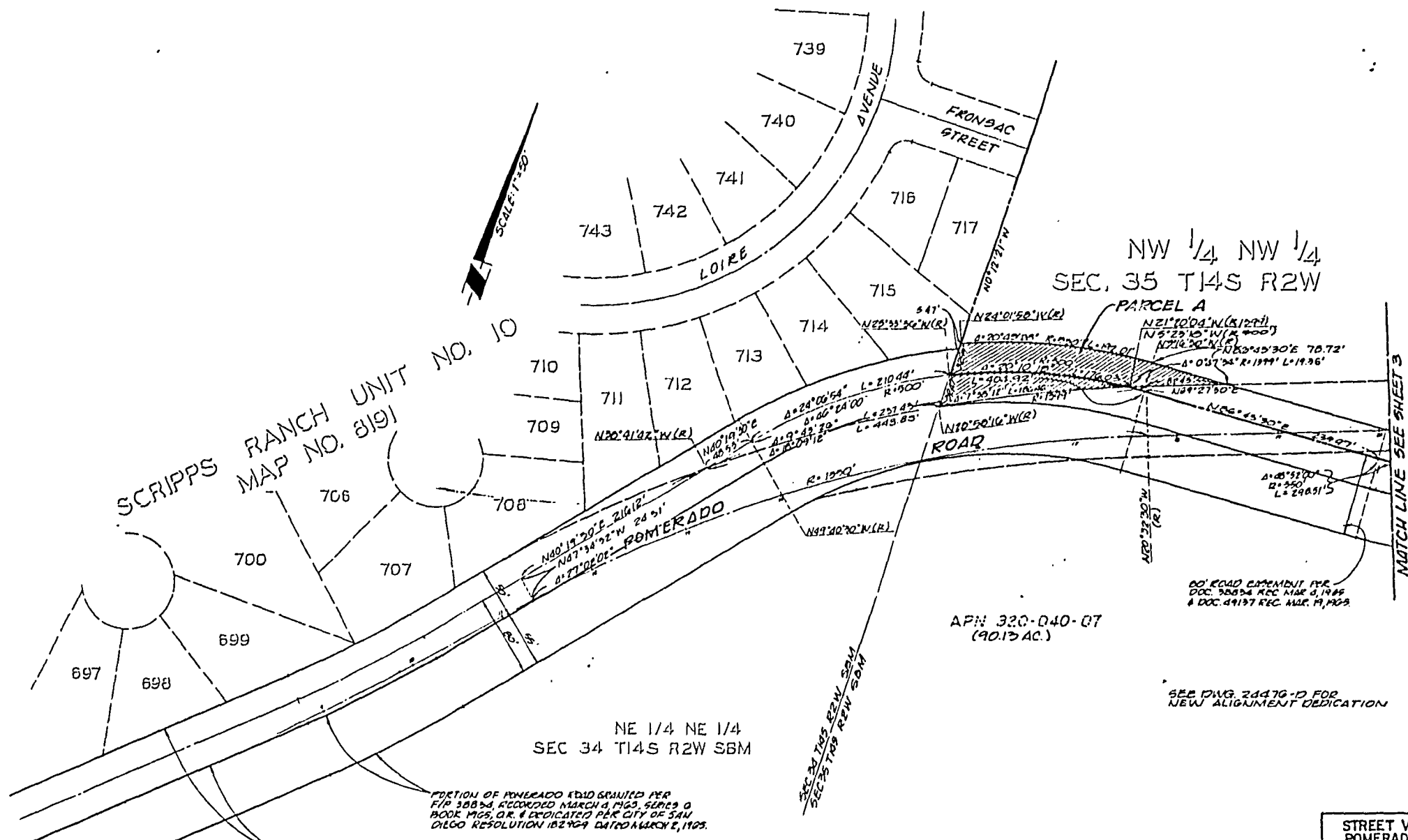


SIB NO	PLANNING-DESIGN-CONSTRUCTION	STREET POME SUNBUR
	Land Engineering Surveying Land Surveying	CITY C
LICENSE NO. 19177 EXPIRES 12/31/17	ALL RIGHTS RESERVED THIS DOCUMENT IS THE PROPERTY OF THE ENGINEER AND SHOULD NOT BE REPRODUCED OR TRANSMITTED IN ANY FORM OR BY ANY MEANS, ELECTRONIC OR MECHANICAL, INCLUDING PHOTOCOPYING, RECORDING, OR BY ANY INFORMATION STORAGE AND RETRIEVAL SYSTEM.	
Samuel F. Sapino CIVIL ENGINEER 19177 STATE OF CALIFORNIA		
Samuel F. Sapino APR 13 2017		



SCRIPPS RANCH UNIT NO. 10  
MAP NO. 8191

NW 1/4 NW 1/4  
SEC. 35 T14S R2W



APN 320-D40-07  
(90.13 AC.)

NE 1/4 NE 1/4  
SEC 34 T14S R2W SBM

60' ROAD EASEMENT PER  
DOC. 28854 REC. MAR. 4, 1946  
& DOC. 49137 REC. MAR. 19, 1959

SEE DWG. 24476-D FOR  
NEW ALIGNMENT DEDICATION

PORTION OF POMERADO ROAD GRANTED PER  
F.P. 32854, RECORDED MARCH 4, 1963, SERIES D  
BOOK MGS, G.R. & DEDICATED PER CITY OF SAN  
DIEGO RESOLUTION 182729 DATED MARCH 2, 1963.

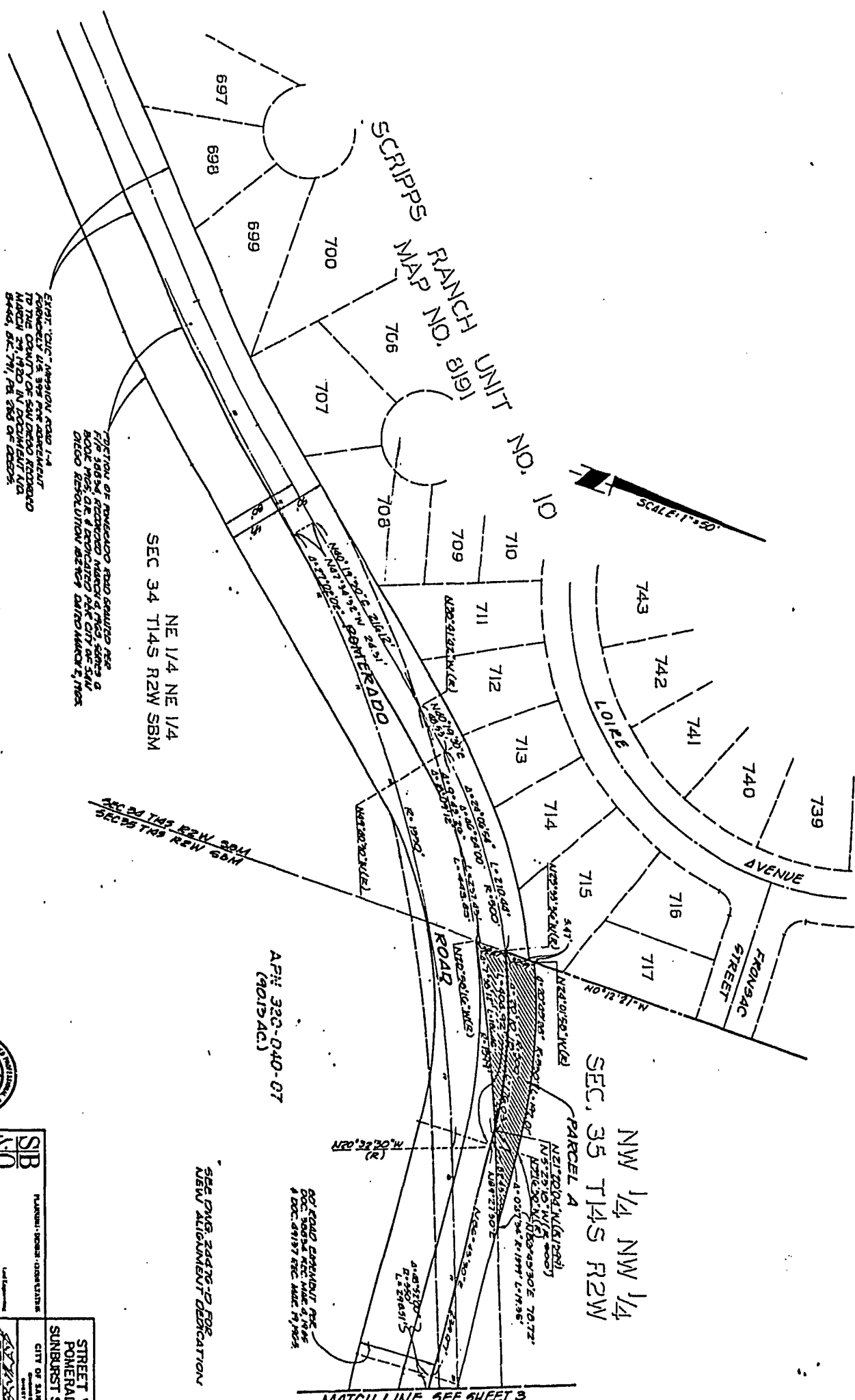
EXH. "CUC" MISSION ROAD 1-A  
FORMERLY U.S. 393 PER AGREEMENT  
TO THE COUNTY OF SAN DIEGO RECORDED  
MARCH 24, 1920 IN DOCUMENT A/C  
18446, G.R. 791, PG. 268 OF DEEDS.

STREET VACATION-PORTION OF  
POMERADO ROAD FOR PROPOSED  
SUNBURST SCRIPPS /SCRIPPS EASTVIEW



SB  
NO  
PLANNING-DESIGN CONSULTANTS  
1st Engineering  
2nd Engineering  
Lead Engineer  
DATE: 11/15/83  
NO. DRAWING: 10-1116-1  
1" = 100'  
DATE: 11/15/83  
PROJECT: 10-1116-1  
SHEET: 2-2

CITY OF SAN DIEGO, CALIFORNIA		24 23 1983
SUBMITTED BY: [Signature]		NO. 87000-1
DATE: 11/15/83		
DRAWN BY: [Signature]		
CHECKED BY: [Signature]		
APPROVED BY: [Signature]		
DATE: 11/15/83		
PROJECT: 10-1116-1		
SHEET: 2-2		



EXIST. 'SUN' AVENUE ROAD 14' EASEMENT AS SHOWN ON ADJACENT MAP TO THE COUNTY OF SAN DIEGO RECORDED MARCH 29, 1930 IN DOCUMENT A14 8444, BK. 741, PG. 283 OF DEEDS.

PORTION OF POWERADO ROAD SHOWN HERE AS 16'6" WIDE, RECORDED MARCH 5, 1965 & BOLD LINES, ARE REPLICATED FOR CITY OF SAN DIEGO RESOLUTION 82729 DATED MARCH 2, 1968.

SEC 34 T14S R2W SBM  
NE 1/4 NE 1/4

SEC 35 T14S R2W SBM  
NW 1/4 NW 1/4

APN 320-040-07  
(90134C)

PARCEL A  
NE 1/4 NW 1/4  
NW 1/4 NW 1/4  
SEC. 35 T14S R2W

MATCH LINE SEE SHEET 3

SEE DWG. 24476-D FOR  
NEW ALIGNMENT DEDICATION

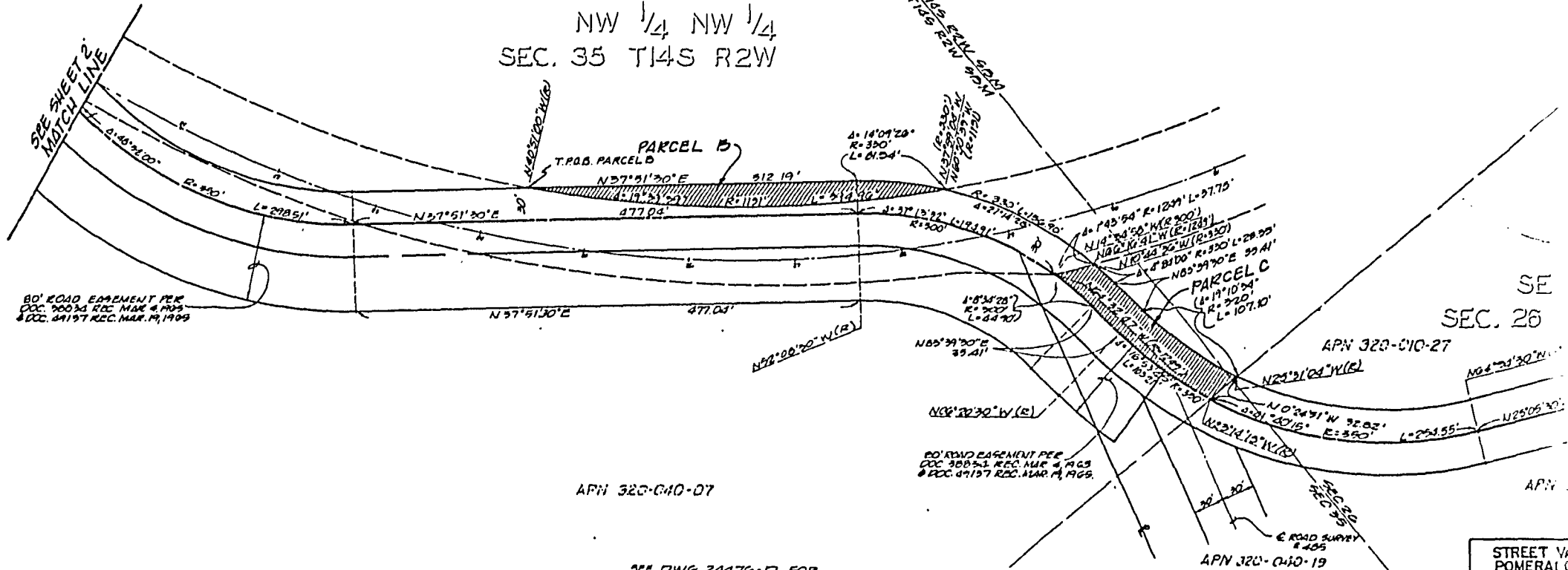
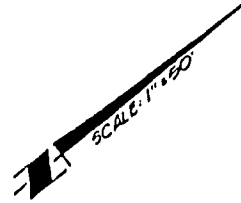


<b>SIB NO</b> PROJECT NUMBER - OBSERVATION 24527-D	
<b>STREET VACATION - PORTION OF POWERADO ROAD FOR PROPOSED SUNBURST SCRIPPS / SCRIPPS EASTVIEW</b> CITY OF SAN DIEGO, CALIFORNIA PROJECT NO. 24527-D	
DATE OF SURVEY 2/23/79	DRAWN BY A.L.C. W.
CHECKED BY A.L.C. W.	SCALE 24527-D-2-D



SW 1/4 SW 1/4  
SEC. 26 T14S R2W

NW 1/4 NW 1/4  
SEC. 35 T14S R2W



80' ROAD EASEMENT PER  
DOC. 20034 REC. MAR. 8, 1905  
& DOC. 24197 REC. MAR. 14, 1905

80' ROAD EASEMENT PER  
DOC. 20034 REC. MAR. 8, 1905  
& DOC. 24197 REC. MAR. 14, 1905

APN 320-040-07

SEE DWG 24476-D FOR  
NEW ALIGNMENT DEDICATION

NE 1/4 NW 1/4  
SEC. 35 T14S R2W



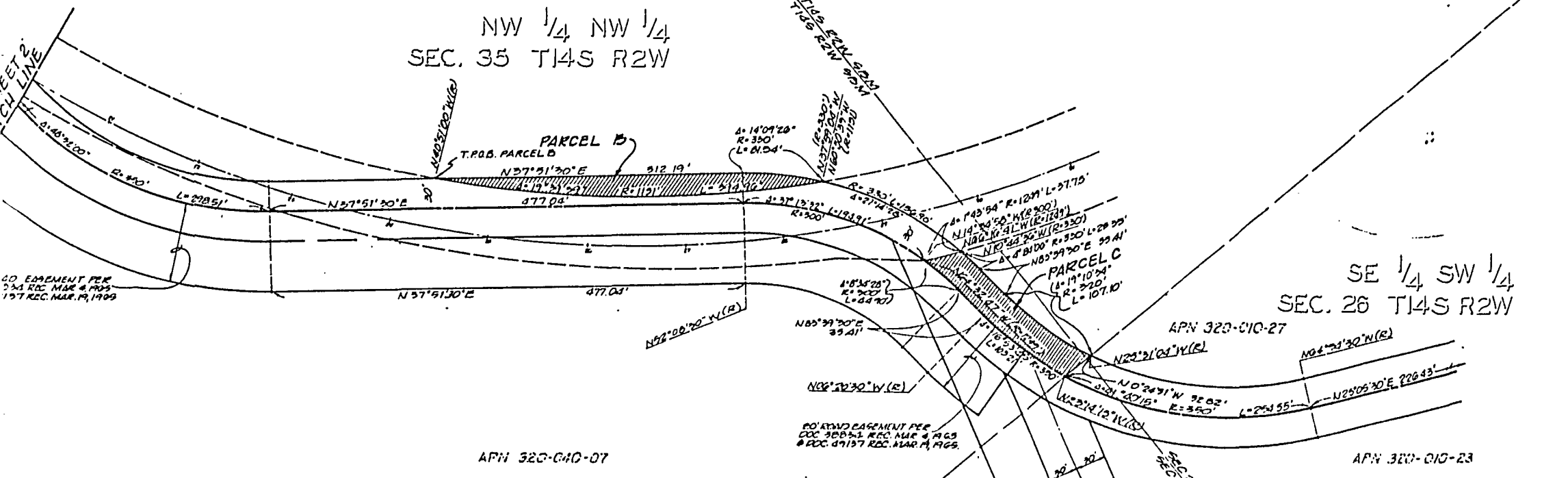
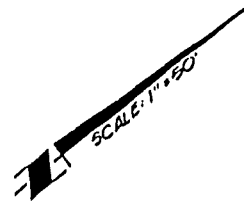
<b>SB</b> <b>NO</b>	PLAN: 1425-1114-1114-1114
	CITY OF SAN DIEGO
1st Engineering 2nd Engineering 3rd Engineering	[Signature] [Title]
[Signature] SAMUEL F. SAFFINO ACE 13177	DATE: 6-20-88

SW 1/4 SW 1/4  
SEC. 26 T14S R2W

NW 1/4 NW 1/4  
SEC. 35 T14S R2W

SE 1/4 SW 1/4  
SEC. 26 T14S R2W

NE 1/4 NW 1/4  
SEC. 35 T14S R2W



40' EASEMENT PER  
DMA REC. MAR. 6, 1905  
157 REC. MAR. 19, 1909

APN 320-040-07

APN 320-010-27

APN 320-010-23

SEE DWG 24476-D FOR  
NEW ALIGNMENT DEDICATION



**SIB**  
**NO**

PLANNING ENGINEER

Land Planning  
Professional Engineering  
Land Surveying

15151  
2701182  
16 WINE,  
IV,  
SAN DIEGO, CALIFORNIA 92111  
Tel: 619-594-1111 Fax: 619-594-1112

6-10-08

*Samuel F. Sapino*  
SAMUEL F. SAPINO RCE 13177

STREET VACATION - PORTION OF POMERADO ROAD FOR PROPOSED SUNBURST SCRIPPS / SCRIPPS EASTVIEW	
CITY OF SAN DIEGO, CALIFORNIA Engineering Department SHEET # OF 6 SHEETS	28-05-55 27-00-00
Prepared by: <i>Samuel F. Sapino</i> Date: 5.19.11	
Checked by: _____ Date: _____	
Approved by: _____ Date: _____	
Drawn by: _____ Date: _____	
Scale: _____	
Project No: _____	24527-3-D



SW 1/4 SW 1/4  
SEC. 26 T14S R2W

NW 1/4 NW 1/4  
SEC. 35 T14S R2W

SE 1/4 SW 1/4  
SEC. 26 T14S R2W

NE 1/4 NW 1/4  
SEC. 35 T14S R2W

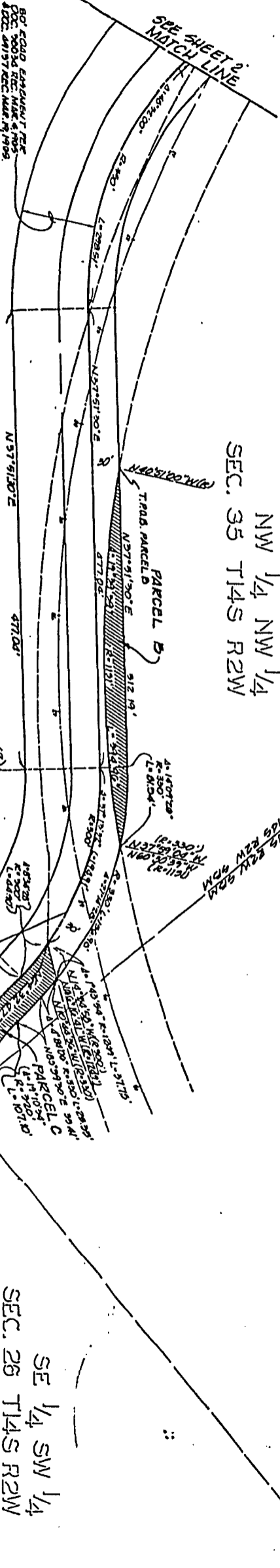
SEE DWG. 24470-D FOR  
NEW ALIGNMENT DEDICATION

APN: 320-G40-07

APN: 320-G40-19

APN: 320-C10-23

APN: 320-C10-27



Samuel F. Serrano  
Professional Engineer  
State of California  
License No. 51322  
Date: 6-10-88

**SIB**  
NO

PLANNING - DESIGN - DEVELOPMENT

**CITY OF SAN DIEGO, CALIFORNIA**  
DEPARTMENT OF PUBLIC WORKS  
COMMUNITY DEVELOPMENT DIVISION

DATE: 5/19/89

PROJECT: STREET VACATION - PORTION OF POMERADO ROAD FOR PROPOSED SUNBURST SCRIPPS / SCRIPPS EASTVIEW

Project No.	24527-3-D
Scale	AS SHOWN
Date	5/19/89
Drawn	A.L.C. & B.
Checked	B.J. TLG
Reviewed	S.F.S.
Approved	S.F.S.

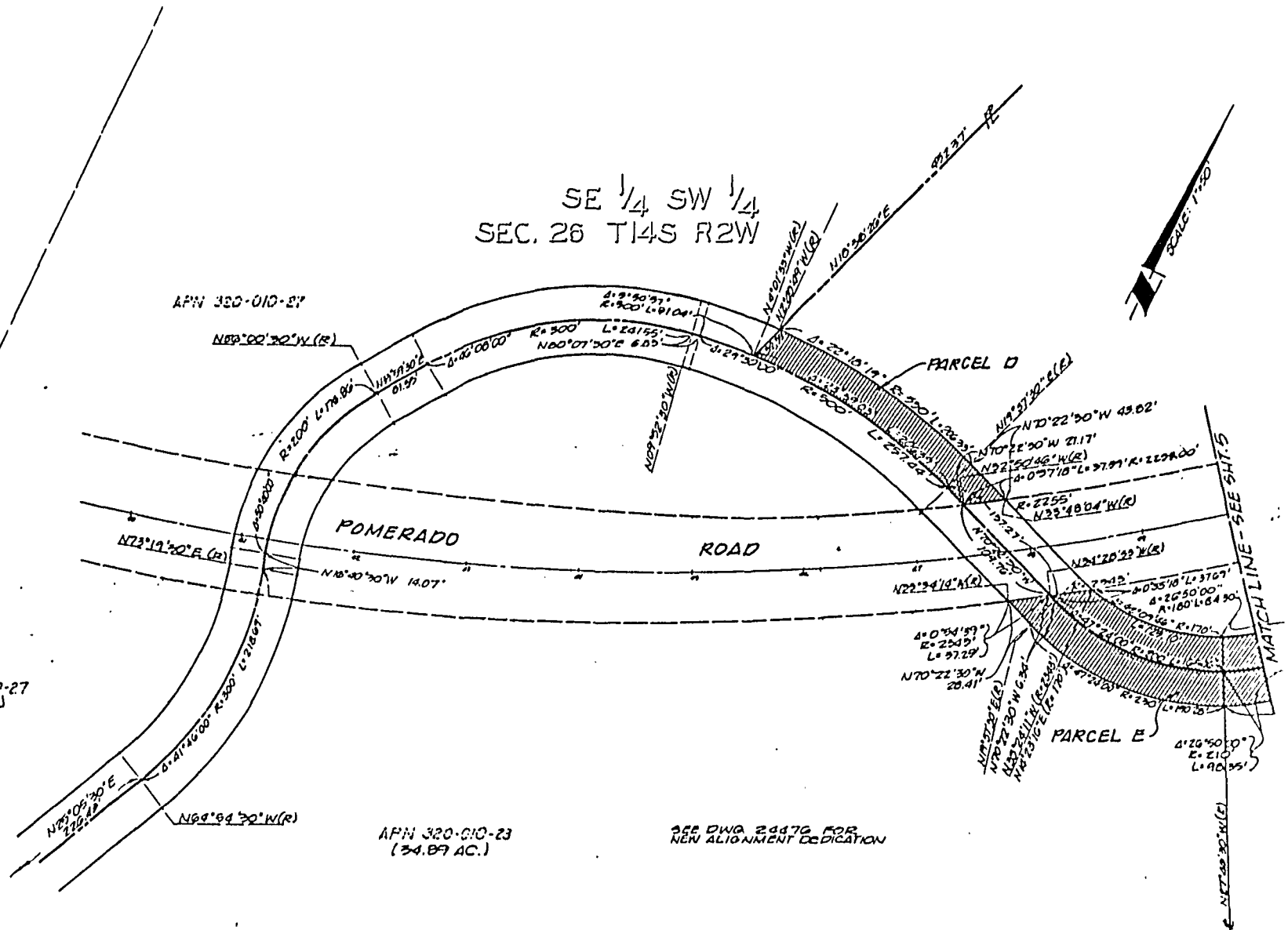
SW 1/4 SW 1/4  
SEC. 26 T14S R2W

SE 1/4 SW 1/4  
SEC. 26 T14S R2W

APN 320-010-27  
(12.18 AC.)

APN 320-010-23  
(34.89 AC.)

SEE DWA 24476 FOR  
NEW ALIGNMENT DEDICATION

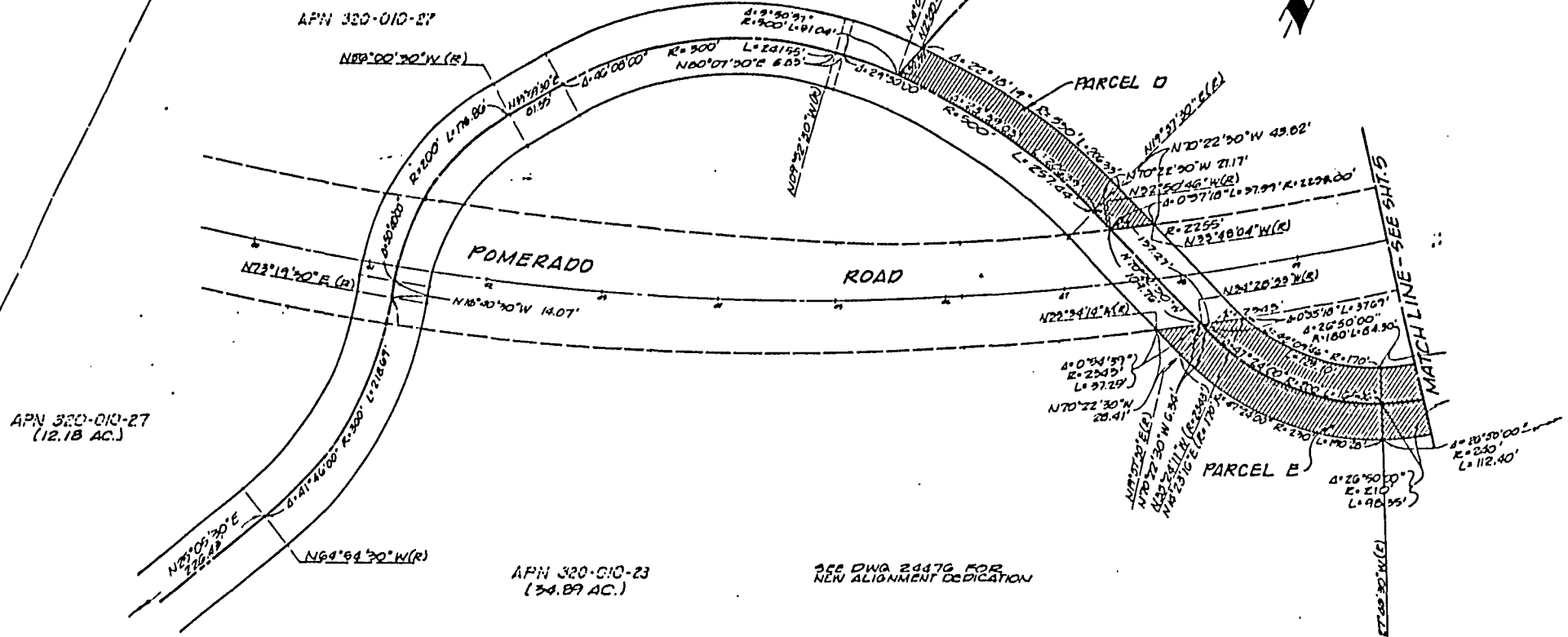


STREET VACATION-P/C  
POMERADO ROAD FOR  
SUNBURST SCRIPPS / S3

	PLANNING DESIGN CONSULTANTS	CITY OF SAN DIEGO, CALIFORNIA															
	1 and 2 representing Schematic Engineering Land Surveying	Engineer's Stamp SHEET # of C SHEETS <i>[Signature]</i>															
	DATE: 6-10-80 SAMUEL P. SAFINO RCE 15177	<table border="1"> <tr> <th>NO.</th> <th>DATE</th> <th>BY</th> <th>APPROVED BY</th> <th>REVISION</th> </tr> <tr> <td> </td> <td> </td> <td> </td> <td> </td> <td> </td> </tr> <tr> <td> </td> <td> </td> <td> </td> <td> </td> <td> </td> </tr> </table>	NO.	DATE	BY	APPROVED BY	REVISION										
NO.	DATE	BY	APPROVED BY	REVISION													

SW 1/4 SW 1/4  
26 T14S R2W

SE 1/4 SW 1/4  
SEC. 26 T14S R2W



APN 320-010-23  
(34.89 AC.)

SEE DWA 24476 FOR  
NEW ALIGNMENT DEDICATION

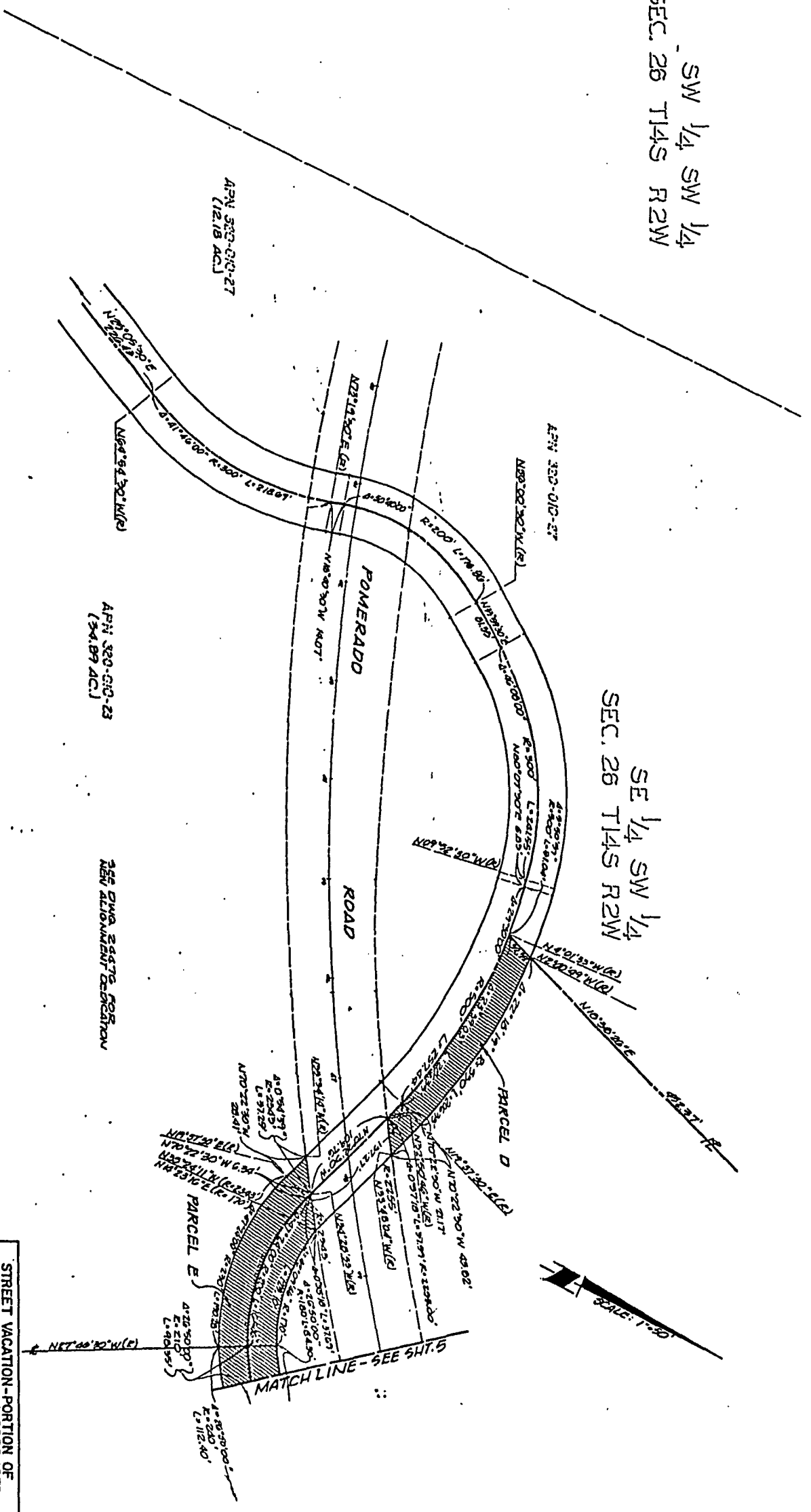
**STREET VACATION-PORTION OF  
POMERADO ROAD FOR PROPOSED  
SUNBURST SCRIPPS /SCRIPPS EASTVIEW**

	PLANNING INFORMATION	CITY OF SAN DIEGO, CALIFORNIA	21527-4-D
	1. and 2. approved 3. and 4. approved 5. approved	1. and 2. approved 3. approved 4. approved	5. approved 6. approved 7. approved
8. approved 9. approved 10. approved	11. approved 12. approved 13. approved	14. approved 15. approved 16. approved	17. approved 18. approved 19. approved
20. approved 21. approved 22. approved	23. approved 24. approved 25. approved	26. approved 27. approved 28. approved	29. approved 30. approved 31. approved
32. approved 33. approved 34. approved	35. approved 36. approved 37. approved	38. approved 39. approved 40. approved	41. approved 42. approved 43. approved
44. approved 45. approved 46. approved	47. approved 48. approved 49. approved	50. approved 51. approved 52. approved	53. approved 54. approved 55. approved
56. approved 57. approved 58. approved	59. approved 60. approved 61. approved	62. approved 63. approved 64. approved	65. approved 66. approved 67. approved
68. approved 69. approved 70. approved	71. approved 72. approved 73. approved	74. approved 75. approved 76. approved	77. approved 78. approved 79. approved
80. approved 81. approved 82. approved	83. approved 84. approved 85. approved	86. approved 87. approved 88. approved	89. approved 90. approved 91. approved
92. approved 93. approved 94. approved	95. approved 96. approved 97. approved	98. approved 99. approved 100. approved	101. approved 102. approved 103. approved



SW 1/4 SW 1/4  
SEC. 26 T14S R2W

SE 1/4 SW 1/4  
SEC. 26 T14S R2W



APN: 320-010-27  
(12.18 AC.)

APN: 320-010-27

APN: 320-010-23  
(34.87 AC.)

555 DWA 25476 FOR  
NEW ALIGNMENT DEVIATION



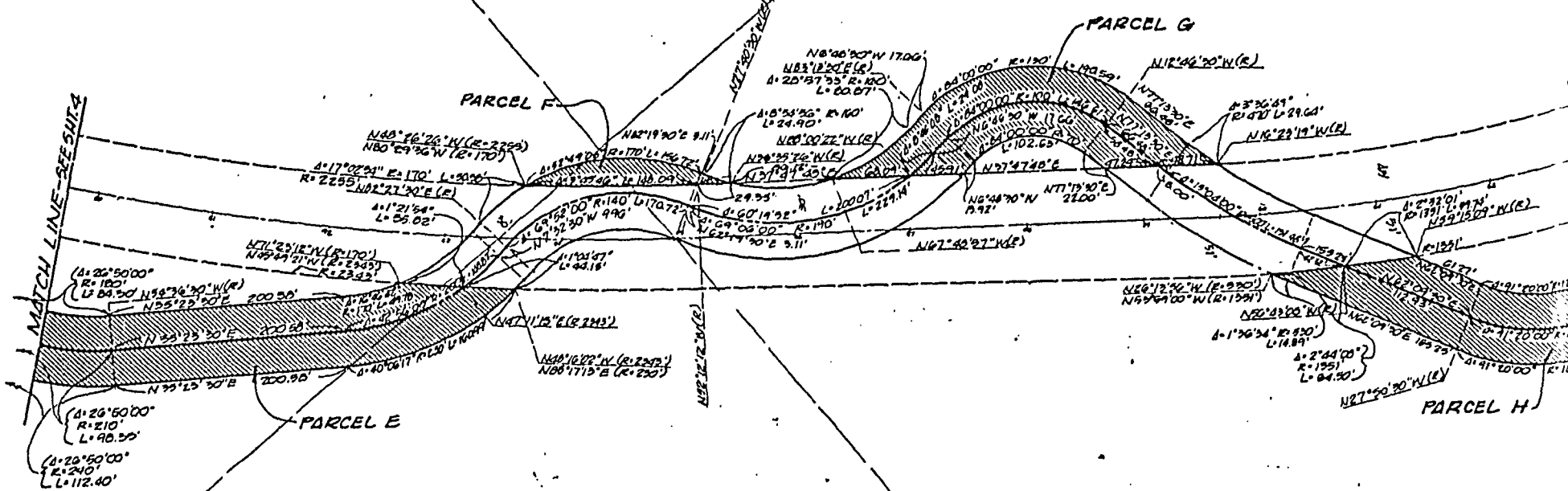
SIB	
PLANNED: JAMES HENNINGER	DATE: 11/11/11
APPROVED: Samuel F. Sapiro	DATE: 11/11/11
PROJECT: STREET VACATION - PORTION OF POWERADO ROAD FOR PROPOSED SUNBURST SCRIPPS / SCRIPPS EASTVIEW	SCALE: 1" = 50'

NO.	DATE	DESCRIPTION	BY
1	11/11/11	PREPARED	JAMES HENNINGER
2	11/11/11	CHECKED	SAMUEL F. SAPIRO
3	11/11/11	APPROVED	SAMUEL F. SAPIRO

NE 1/4 SW 1/4  
SEC. 26 T14S R2W

SE 1/4 SW 1/4  
SEC. 26 T14S R2W

NW 1/4 SE 1/4  
SEC. 26 T14S R2W



SEC DWG 24876-D FOR  
NEW ALIGNMENT DEDICATION

SW 1/4 SE 1/4  
SEC. 26 T14S R2W

APN 320-010-25  
(40.12 AC.)



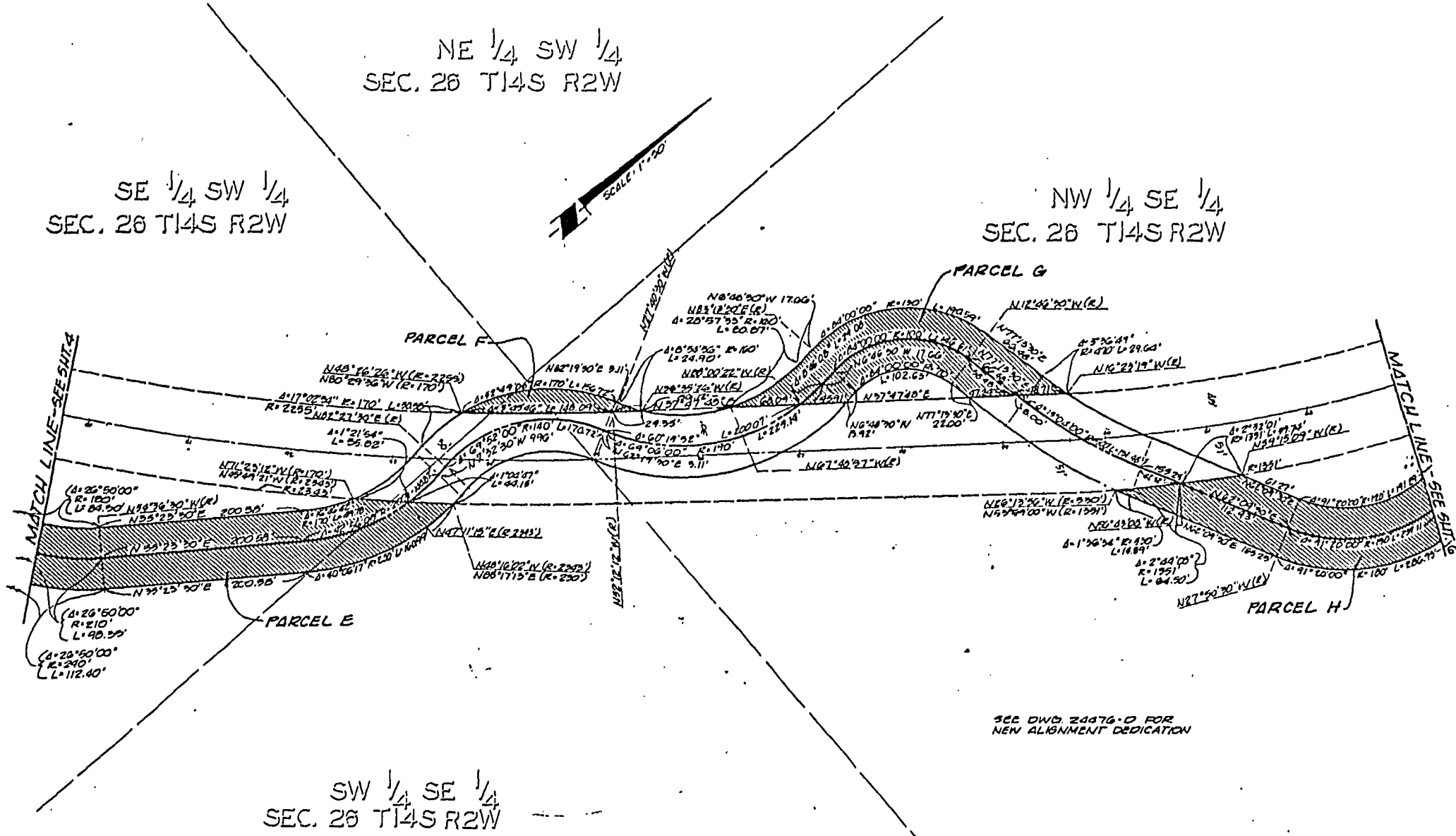
<b>SB</b> <b>NO</b>	PLANNING DEPARTMENT	CITY OF SAN DIEGO
	1 and 2 approved 3 and 4 approved 5 and 6 approved	Planning Director City Engineer City Auditor City Clerk City Manager
Samuel F. Safino 0-10-80	Date: 0-10-80 Title: 13177	Date: 0-10-80 Title: 13177

STREET VAC  
POMERADO  
SUNBURST SCF

NE 1/4 SW 1/4  
SEC. 26 T14S R2W

SE 1/4 SW 1/4  
SEC. 26 T14S R2W

NW 1/4 SE 1/4  
SEC. 26 T14S R2W



SW 1/4 SE 1/4  
SEC. 26 T14S R2W

APN 320-010-25  
(40.12 AC.)

SEE DWG. 24476-D FOR  
NEW ALIGNMENT DEDICATION



SB  
NO

PLANNING - DESIGN - ENGINEERING

1. Land Engineering  
2. Surveying  
3. Land Use Planning

6-10-89

SAMUEL F. SAFINO  
PCE 13177

STREET VACATION - PORTION OF POMERADO ROAD FOR PROPOSED SUNBURST SCRIPPS / SCRIPPS EASTVIEW	
CITY OF SAN DIEGO, CALIFORNIA LANDMARKS DEPARTMENT SHEET 5 OF 6 SHEETS	3138-513 070884
APPROVED BY <i>Samuel F. Safino</i> DATE: 6-10-89	APPROVED BY <i>Samuel F. Safino</i> DATE: 6-10-89
PROJECT NO. 271-1789	DRAWING NO. 24527-5-D



NE 1/4 SW 1/4  
SEC. 26 T14S R2W

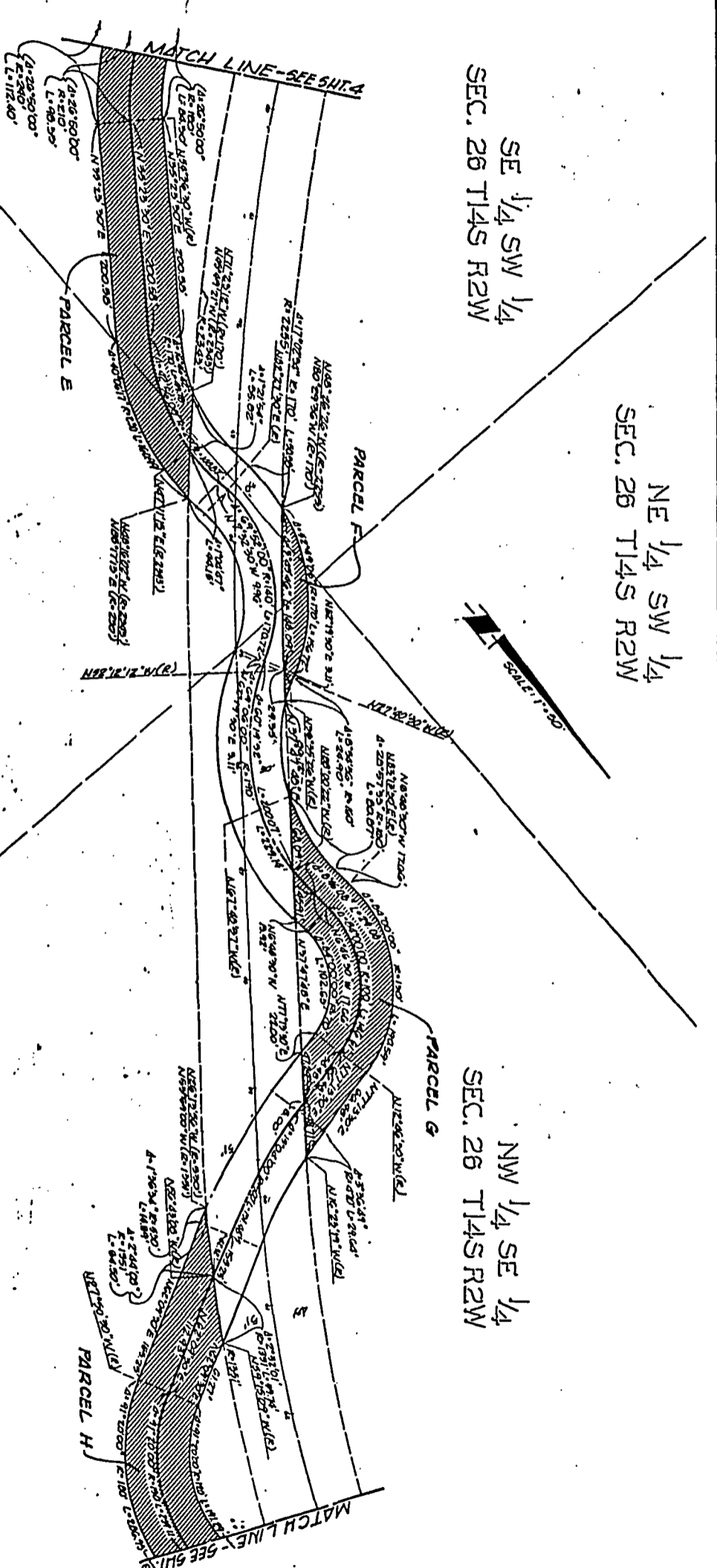
SE 1/4 SW 1/4  
SEC. 26 T14S R2W

NW 1/4 SE 1/4  
SEC. 26 T14S R2W

SW 1/4 SE 1/4  
SEC. 26 T14S R2W

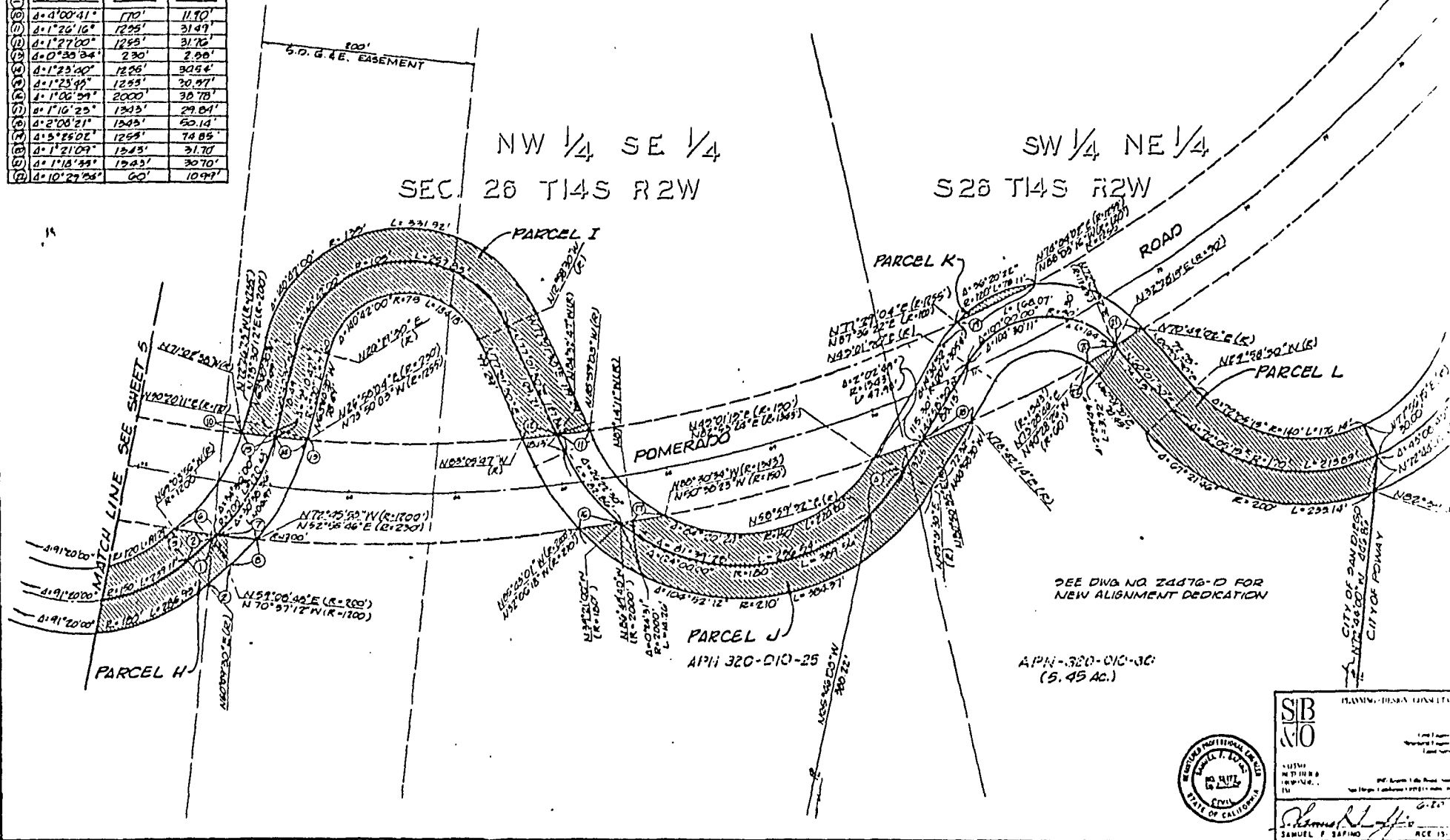
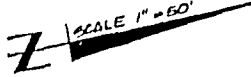
APN 320-010-25  
(9412 AC)

SEE DWG 24476-D FOR  
NEW ALIGNMENT DEDICATION



<b>SIB</b> PLANNED - IMPROV - DEVELOPMENT NO		<b>STREET VACATION - PORTION OF          POMERADO ROAD FOR PROPOSED          SUNBURST SCRIPPS / SCRIPPS EASTVIEW</b>	
CITY OF SAN DIEGO, CALIFORNIA DEPARTMENT OF PUBLIC WORKS 1600 LA JOLLA VILLAGE DRIVE SAN DIEGO, CA 92161 TEL: 619-441-3000 FAX: 619-441-3001		DATE: 01/25/18 DRAWN BY: [Signature] CHECKED BY: [Signature] SCALE: 1" = 50' SHEET NO: 24527-5-D	

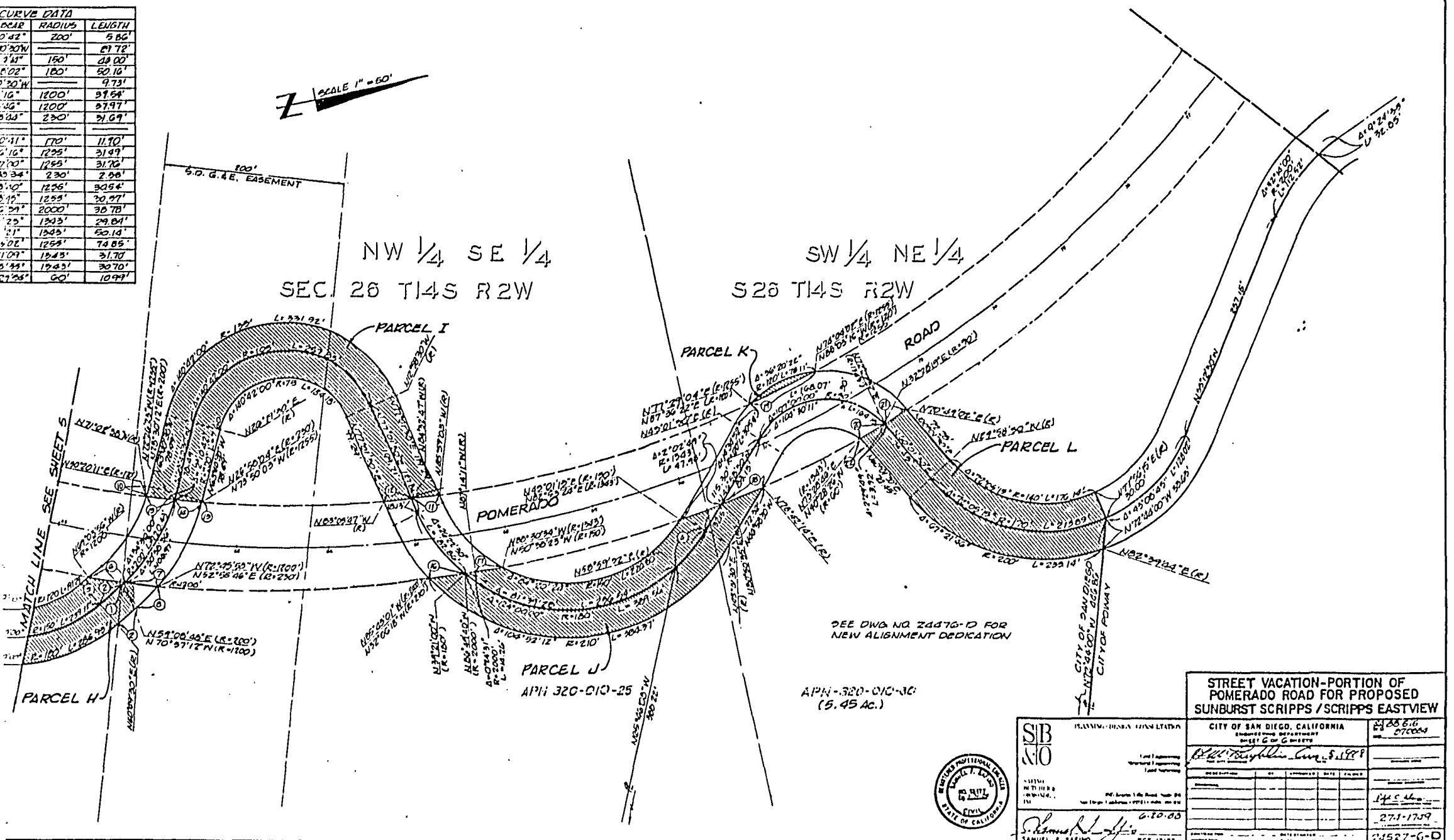
CURVE DATA			
NO	Δ OR BEAR	RADIUS	LENGTH
1	Δ 1°20'42"	200'	5.86'
2	N 29°10'30"W		27.72'
3	Δ 17°34'41"	150'	28.00'
4	Δ 13°56'02"	100'	50.16'
5	N 29°10'30"W		9.73'
6	Δ 1°53'16"	1200'	51.54'
7	Δ 1°56'46"	1200'	57.97'
8	Δ 7°53'34"	250'	31.09'
9	Δ 4°00'41"	170'	11.70'
10	Δ 1°26'16"	1255'	31.47'
11	Δ 1°27'00"	1255'	31.76'
12	Δ 0°30'34"	230'	2.98'
13	Δ 1°23'40"	1255'	30.54'
14	Δ 1°23'49"	1255'	30.97'
15	Δ 1°06'59"	2000'	36.78'
16	Δ 1°16'25"	1343'	29.81'
17	Δ 2°08'21"	1343'	50.14'
18	Δ 5°25'02"	1255'	74.85'
19	Δ 1°21'09"	1243'	31.78'
20	Δ 1°18'54"	1243'	30.70'
21	Δ 10°27'58"	60'	10.97'



SIB  
110  
DRAWING DESIGN CONSULTANTS  
1000 S. GARDEN ST.  
SAN ANTONIO, TEXAS 78207  
PH. 512.345.1111  
FAX 512.345.1112  
www.sib110.com  
Samuel T. Bano  
APN 320-010-25  
5.45 AC. ACE 15-77

CURVE DATA		
BEAR	RADIUS	LENGTH
10°42'	200'	5.86'
10°30'N		61.72'
7°41'	150'	28.00'
16°02'	180'	60.18'
1°20'W		9.73'
1°16'	1200'	21.54'
1°26'	1200'	21.97'
5°22'	230'	21.69'
10°41'	170'	11.70'
6°16'	1225'	31.49'
7°00'	1255'	31.70'
33°34'	230'	2.96'
3°40'	1226'	30.54'
2°10'	1255'	30.97'
2°24'	2000'	36.78'
2°25'	1243'	29.81'
1°1'	1243'	60.18'
4°02'	1255'	74.85'
7°09'	1243'	31.70'
6°44'	1243'	30.70'
27°26'	60'	10.44'

SCALE 1" = 60'



STREET VACATION-PORION OF POMERADO ROAD FOR PROPOSED SUNBURST SCRIPPS / SCRIPPS EASTVIEW		
DATE	BY	REVISION

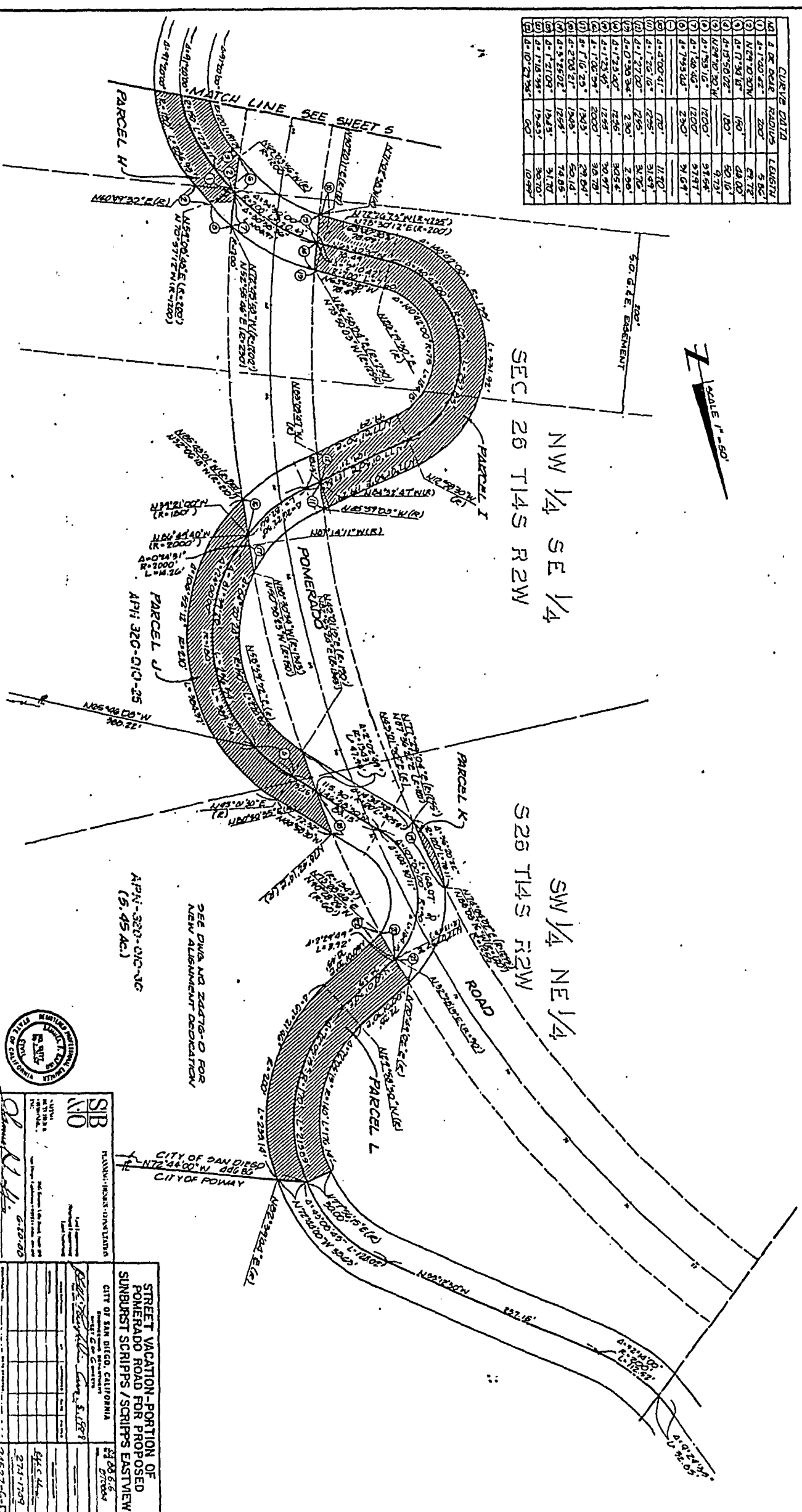


S. P. SAFINO  
 6.20.00  
 SAMUEL P. SAFINO  
 P.E. 15177

NO.	START POINT	RADIUS	LENGTH
1	4+1700.42	2000	9.86
2	4+1700.42	2000	9.86
3	4+1700.42	2000	9.86
4	4+1700.42	2000	9.86
5	4+1700.42	2000	9.86
6	4+1700.42	2000	9.86
7	4+1700.42	2000	9.86
8	4+1700.42	2000	9.86
9	4+1700.42	2000	9.86
10	4+1700.42	2000	9.86
11	4+1700.42	2000	9.86
12	4+1700.42	2000	9.86
13	4+1700.42	2000	9.86
14	4+1700.42	2000	9.86
15	4+1700.42	2000	9.86
16	4+1700.42	2000	9.86
17	4+1700.42	2000	9.86
18	4+1700.42	2000	9.86
19	4+1700.42	2000	9.86
20	4+1700.42	2000	9.86
21	4+1700.42	2000	9.86
22	4+1700.42	2000	9.86
23	4+1700.42	2000	9.86
24	4+1700.42	2000	9.86
25	4+1700.42	2000	9.86
26	4+1700.42	2000	9.86
27	4+1700.42	2000	9.86
28	4+1700.42	2000	9.86
29	4+1700.42	2000	9.86
30	4+1700.42	2000	9.86
31	4+1700.42	2000	9.86
32	4+1700.42	2000	9.86
33	4+1700.42	2000	9.86
34	4+1700.42	2000	9.86
35	4+1700.42	2000	9.86
36	4+1700.42	2000	9.86
37	4+1700.42	2000	9.86
38	4+1700.42	2000	9.86
39	4+1700.42	2000	9.86
40	4+1700.42	2000	9.86
41	4+1700.42	2000	9.86
42	4+1700.42	2000	9.86
43	4+1700.42	2000	9.86
44	4+1700.42	2000	9.86
45	4+1700.42	2000	9.86
46	4+1700.42	2000	9.86
47	4+1700.42	2000	9.86
48	4+1700.42	2000	9.86
49	4+1700.42	2000	9.86
50	4+1700.42	2000	9.86
51	4+1700.42	2000	9.86
52	4+1700.42	2000	9.86
53	4+1700.42	2000	9.86
54	4+1700.42	2000	9.86
55	4+1700.42	2000	9.86
56	4+1700.42	2000	9.86
57	4+1700.42	2000	9.86
58	4+1700.42	2000	9.86
59	4+1700.42	2000	9.86
60	4+1700.42	2000	9.86
61	4+1700.42	2000	9.86
62	4+1700.42	2000	9.86
63	4+1700.42	2000	9.86
64	4+1700.42	2000	9.86
65	4+1700.42	2000	9.86
66	4+1700.42	2000	9.86
67	4+1700.42	2000	9.86
68	4+1700.42	2000	9.86
69	4+1700.42	2000	9.86
70	4+1700.42	2000	9.86
71	4+1700.42	2000	9.86
72	4+1700.42	2000	9.86
73	4+1700.42	2000	9.86
74	4+1700.42	2000	9.86
75	4+1700.42	2000	9.86
76	4+1700.42	2000	9.86
77	4+1700.42	2000	9.86
78	4+1700.42	2000	9.86
79	4+1700.42	2000	9.86
80	4+1700.42	2000	9.86
81	4+1700.42	2000	9.86
82	4+1700.42	2000	9.86
83	4+1700.42	2000	9.86
84	4+1700.42	2000	9.86
85	4+1700.42	2000	9.86
86	4+1700.42	2000	9.86
87	4+1700.42	2000	9.86
88	4+1700.42	2000	9.86
89	4+1700.42	2000	9.86
90	4+1700.42	2000	9.86



SEC 26 T14S R2W  
NW 1/4 SE 1/4  
SW 1/4 NE 1/4  
S26 T14S R2W



SEE DWG NO. 24476-D FOR  
NEW ALIGNMENT DEDICATION  
APN: 320-010-25  
(5.95 AC.)



**SFB**  
NO. 11717  
PLANNING ENGINEERS  
SUNBURST SCRIPPS EASTVIEW  
CITY OF SAN DIEGO, CALIFORNIA

NO.	DATE	DESCRIPTION	BY	CHECKED
1	6-10-00	PRELIMINARY PLAN	Samuel F. Shaw	Samuel F. Shaw
2	6-10-00	FINAL PLAN	Samuel F. Shaw	Samuel F. Shaw

STREET VACATION - PORTION OF  
POMERADO ROAD FOR PROPOSED  
SUNBURST SCRIPPS / SCRIPPS EASTVIEW  
CITY OF SAN DIEGO, CALIFORNIA  
APN: 320-010-25  
5.95 AC.

347 L

JUL 5 1988

Passed and adopted by the Council of The City of San Diego on....., by the following vote:

Council Members	Yeas	Nays	Not Present	Ineligible
Abbe Wolfsheimer	<input type="checkbox"/>	<input checked="" type="checkbox"/>	<input type="checkbox"/>	<input type="checkbox"/>
Ron Roberts	<input checked="" type="checkbox"/>	<input type="checkbox"/>	<input type="checkbox"/>	<input type="checkbox"/>
Gloria McColl	<input checked="" type="checkbox"/>	<input type="checkbox"/>	<input type="checkbox"/>	<input type="checkbox"/>
H. Wes Pratt	<input checked="" type="checkbox"/>	<input type="checkbox"/>	<input type="checkbox"/>	<input type="checkbox"/>
Ed Struiksma	<input checked="" type="checkbox"/>	<input type="checkbox"/>	<input type="checkbox"/>	<input type="checkbox"/>
J. Bruce Henderson	<input checked="" type="checkbox"/>	<input type="checkbox"/>	<input type="checkbox"/>	<input type="checkbox"/>
Judy McCarty	<input checked="" type="checkbox"/>	<input type="checkbox"/>	<input type="checkbox"/>	<input type="checkbox"/>
Bob Filner	<input type="checkbox"/>	<input checked="" type="checkbox"/>	<input type="checkbox"/>	<input type="checkbox"/>
Mayor Maureen O'Connor	<input type="checkbox"/>	<input type="checkbox"/>	<input checked="" type="checkbox"/>	<input type="checkbox"/>

AUTHENTICATED BY:

MAUREEN O'CONNOR  
Mayor of The City of San Diego, California.

(Seal)

CHARLES G. ABDELNOUR  
City Clerk of The City of San Diego, California.

By *Blonde R. Barnes*, Deputy.

Office of the City Clerk, San Diego, California

Resolution Number R-271352 Adopted JUL 5 1988

RECEIVED  
CITY CLERK'S OFFICE  
1998 JUN 22 AM 11:27  
SAN DIEGO, CALIF. 9