

RESOLUTION NUMBER R- 285378

ADOPTED ON FEB 27 1995

WHEREAS, the vacation of the City's interest in an unneeded water, sewer, drainage, and general utility easements affecting portions of Parcel 1-A of the San Diego Unified Port District Tidelands, Map No. 564, as more particularly shown on Drawing No. 25987-D attached hereto as Exhibit A, has been requested by the affected property owner; and

WHEREAS, the owner wishes to clear title to the land of all unnecessary easements in order to permit better utilization of the property; and

WHEREAS, new easements are being granted to the City and, therefore, the herein-described easements are surplus to City needs; and

WHEREAS, this action is exempt from the provisions of the California Environmental Quality Act of 1970 under City guidelines for implementation of said Act, as amended; NOW, THEREFORE,

BE IT RESOLVED, by the Council of The City of San Diego, as follows:

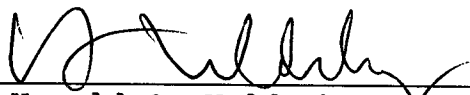
1. That pursuant to Section 8300 et seq. of the Streets and Highways Code the water, sewer, drainage and general utility easements, as more particularly shown on the attachment hereto, are hereby vacated.

2. That the City Manager or his designee is hereby authorized to execute, for and on behalf of The City of San

Diego, a quitclaim deed, which is on file in the office of the City Clerk as Document No. RR- 285378, quitclaiming to SAN DIEGO UNIFIED PORT DISTRICT those certain easements, as more particularly described in the quitclaim deed.

3. That the City Clerk of said City be, and he is hereby authorized and directed to cause the deed and a certified copy of this resolution, attested by him under seal, to be recorded in the office of the County Recorder.

APPROVED: JOHN W. WITT, City Attorney

By 
Harold O. Valderhaug
Chief Deputy City Attorney

HOV:ps
02/10/95
Or.Dept:Eng.
TM.900945
WO.075004
25987-D
R-95-1178
Form=r.eaban

15' DRAINAGE ESMT. TO THE CITY OF SAN DIEGO PER F/P NO. 85-200071 FILED 8-2-85. PER CITY OF SAN DIEGO DWG. NO. 18465-B.

HARBOR DRIVE (OLD COMMERCIAL STREET)
(DEDICATED PER MAP 456)

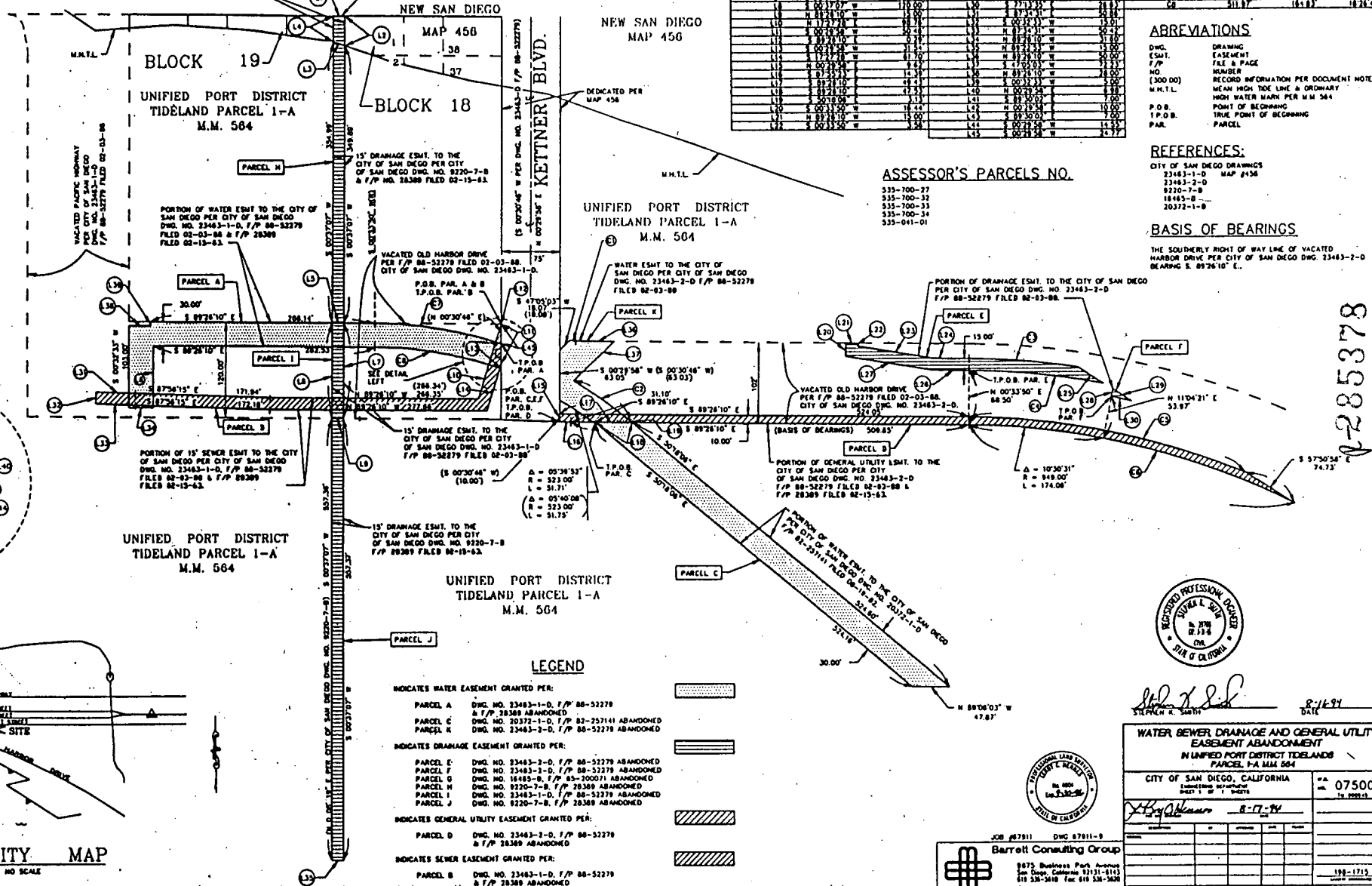
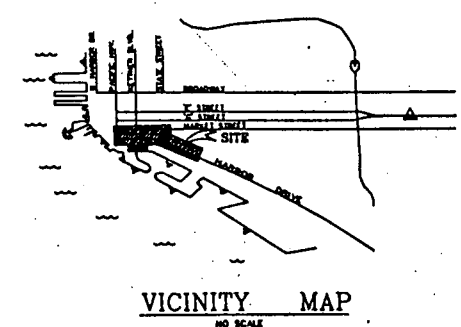
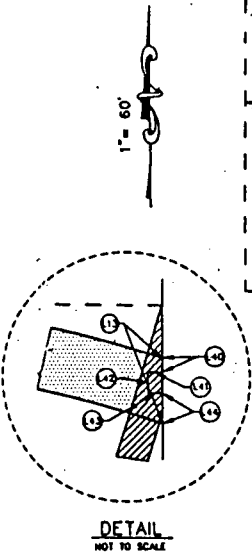
LINE	DIRECTION	DISTANCE	LINE	DIRECTION	DISTANCE	CURVE	RADIUS	LENGTH	DELTA
L1	S 89°27'10" W	100.00	L23	S 80°44'18" W	84.78	C1	70.00	7.00	200°39'
L2	S 00°17'00" W	37.88	L24	S 89°28'10" W	13.82	C2	55.00	86.57	09°12'30"
L3	S 00°19'00" W	28.00	L25	S 89°28'10" W	27.00	C3	103.50	100.91	07°11'11"
L4	S 00°19'00" W	28.00	L26	S 89°28'10" W	48.79	C4	101.50	179.10	07°48'53"
L5	S 00°19'00" W	28.00	L27	S 89°28'10" W	11.81	C5	251.00	362.91	21°40'17"
L6	S 00°19'00" W	28.00	L28	S 89°28'10" W	28.00	C6	251.00	362.91	21°40'17"
L7	S 00°19'00" W	28.00	L29	S 89°28'10" W	28.00	C7	251.00	362.91	21°40'17"
L8	S 00°19'00" W	28.00	L30	S 89°28'10" W	28.00	C8	251.00	362.91	21°40'17"
L9	S 00°19'00" W	28.00	L31	S 89°28'10" W	28.00	C9	251.00	362.91	21°40'17"
L10	S 00°19'00" W	28.00	L32	S 89°28'10" W	28.00	C10	251.00	362.91	21°40'17"
L11	S 00°19'00" W	28.00	L33	S 89°28'10" W	28.00	C11	251.00	362.91	21°40'17"
L12	S 00°19'00" W	28.00	L34	S 89°28'10" W	28.00	C12	251.00	362.91	21°40'17"
L13	S 00°19'00" W	28.00	L35	S 00°21'54" W	24.77				

ABBREVIATIONS
 DWG. DRAWING
 ESMT. EASEMENT
 F & P FILE & PAGE
 NO. NUMBER
 (300.00) RECORD INFORMATION PER DOCUMENT NOTED
 M.M.T.L. MEAN HIGH TIDE LINE & ORDINARY
 HIGH WATER MARK PER M.M. 564
 P.O.B. POINT OF BEGINNING
 T.P.O.B. TRUE POINT OF BEGINNING
 PAR. PARCEL

REFERENCES:
 CITY OF SAN DIEGO DRAWINGS
 23463-1-D MAP #456
 23463-2-D
 8220-7-B
 18465-B
 20372-1-B

BASIS OF BEARINGS:
 THE SOUTHERLY RIGHT OF WAY LINE OF VACATED HARBOR DRIVE PER CITY OF SAN DIEGO DWG. 23463-2-D BEARING S. 89°26'10" E.

ASSESSOR'S PARCELS NO.
 535-700-37
 535-700-32
 535-700-33
 535-700-34
 535-041-01



LEGEND

INDICATES WATER EASEMENT GRANTED PER:

PARCEL A DWG. NO. 23463-1-D, F/P 88-52278
 & F/P 28389 ABANDONED

PARCEL C DWG. NO. 20372-1-D, F/P 82-25741 ABANDONED

PARCEL K DWG. NO. 23463-2-D, F/P 88-52278 ABANDONED

INDICATES DRAINAGE EASEMENT GRANTED PER:

PARCEL E DWG. NO. 23463-2-D, F/P 88-52278 ABANDONED

PARCEL F DWG. NO. 23463-2-D, F/P 88-52278 ABANDONED

PARCEL G DWG. NO. 18465-B, F/P 85-200071 ABANDONED

PARCEL H DWG. NO. 8220-7-B, F/P 28389 ABANDONED

PARCEL I DWG. NO. 23463-1-D, F/P 88-52278 ABANDONED

PARCEL J DWG. NO. 8220-7-B, F/P 28389 ABANDONED

INDICATES GENERAL UTILITY EASEMENT GRANTED PER:

PARCEL D DWG. NO. 23463-2-D, F/P 88-52278 & F/P 28389 ABANDONED

INDICATES SEWER EASEMENT GRANTED PER:

PARCEL B DWG. NO. 23463-1-D, F/P 88-52278 & F/P 28389 ABANDONED

Barrett Consulting Group
 8875 Business Park Avenue
 San Diego, California 92131-6143
 619 538-5618 Fax 619 538-5620

REGISTERED PROFESSIONAL ENGINEER
 STATE OF CALIFORNIA
 STEPHEN K. SMITH
 8-1634 DATE

WATER BEWER DRAINAGE AND GENERAL UTILITY EASEMENT ABANDONMENT
 IN UNIFIED PORT DISTRICT TIDELANDS PARCEL P-A M.M. 564

CITY OF SAN DIEGO, CALIFORNIA
 075004

8-17-94

25987-D

REDUCED SCALE PRINT-ORIG. SCALE

OCTOBER 31, 1991

285378

EXHIBIT A