

RESOLUTION NUMBER R- 285665

ADOPTED ON MAY 01 1995

WHEREAS, Section 8330 (a and b), et seq. of the California Streets and Highways Code provides a procedure for the summary vacation of streets and public service easements by City Council resolution where for a period of five consecutive years the street or highway has been impassable for vehicular travel and no money was expended for maintenance on the street or highway during such period; and

WHEREAS, the abutting property owners have requested the vacation of Sorrento Hills Way within a portion of the Northwest 1/4 of Section 31, Township 14 South, Row 3 West, San Bernardino Meridian, in connection with Torrey Reserve Heights (TM 91-0361) to facilitate development of their property; and

WHEREAS, the portion of street to be vacated is not needed for present or prospective public street purposes; and

WHEREAS, those properties adjoining the street to be vacated will continue to have access; and

WHEREAS, the public will benefit from the vacation through improved utilization of land; and

WHEREAS, the vacation or abandonment is not inconsistent with the General Plan or an approved Community Plan; and

Corrected 05/04/95

APPROVED AND ADOPTED
MAY 01 1995
CITY OF SAN BERNARDINO

WHEREAS, it is necessary and desirable that the vacation be conditioned upon completion of a certain final map for Torrey Reserve Heights (TM 91-0361) for the affected parcels; and

WHEREAS, the public street system for which the right-of-way was originally acquired will not be detrimentally affected by this vacation; NOW, THEREFORE,

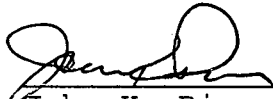
BE IT RESOLVED, by the Council of The City of San Diego, as follows:

1. That Sorrento Hills Way within a portion of the Northwest 1/4 of Section 31, Township 14 South, Row 3 West, San Bernardino Meridian, and in connection with Torrey Reserve Heights (TM 91-0361), as more particularly shown on Drawing No. 18279-B on file in the office of the City Clerk as Document No. RR-285665, which is by this reference incorporated herein and made a part hereof, be and the same is hereby ordered vacated.

2. That the resolution shall not become effective unless and until the final map Torrey Reserve Heights (TM 91-0361) which encompasses the easterly terminus of Sorrento Hills Way has been approved by Council action. In the event that the final map is not approved within the time allowance specified under the tentative map conditions or any subsequent time extensions allowed, this resolution shall become void and of no further force or effect.

3. That the City Engineer shall advise the City Clerk of the approval of the aforementioned final map, and that the City Clerk shall then cause a certified copy of this resolution, with drawing, attested by him under seal, to be recorded in the office of the County Recorder.

APPROVED: JOHN W. WITT, City Attorney

By 






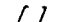
John K. Riess
Senior Deputy City Attorney

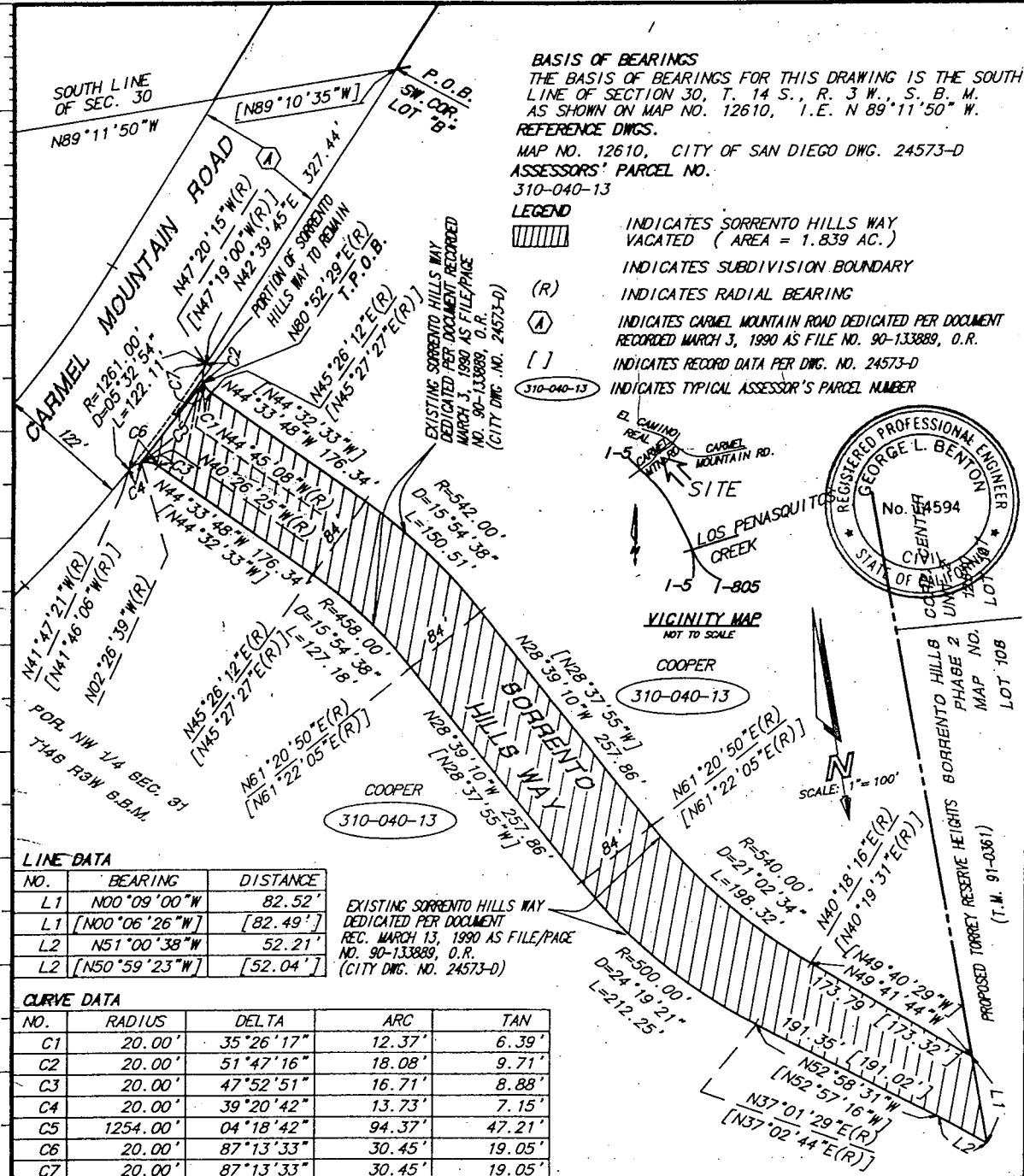
JKR:pev
04/18/95
Or.Dept:E&D
SA:92-514
WO:91-0361
Dwg:18279-B
R-95-1513
Form=r.sumv3

BASIS OF BEARINGS
 THE BASIS OF BEARINGS FOR THIS DRAWING IS THE SOUTH LINE OF SECTION 30, T. 14 S., R. 3 W., S. B. M. AS SHOWN ON MAP NO. 12610, I.E. N 89°11'50" W.

REFERENCE DWGS.
 MAP NO. 12610, CITY OF SAN DIEGO DWG. 24573-D
 ASSESSORS' PARCEL NO. 310-040-13

LEGEND

-  INDICATES SORRENTO HILLS WAY VACATED (AREA = 1.839 AC.)
-  INDICATES SUBDIVISION BOUNDARY
-  INDICATES RADIAL BEARING
-  INDICATES CARMEL MOUNTAIN ROAD DEDICATED PER DOCUMENT RECORDED MARCH 3, 1990 AS FILE NO. 90-133889, O.R.
-  INDICATES RECORD DATA PER DWG. NO. 24573-D
-  INDICATES TYPICAL ASSESSOR'S PARCEL NUMBER



LINE DATA

NO.	BEARING	DISTANCE
L1	N00°09'00"W	82.52'
L1	[N00°06'26"W]	[82.49']
L2	N51°00'38"W	52.21'
L2	[N50°59'23"W]	[52.04']

CURVE DATA

NO.	RADIUS	DELTA	ARC	TAN
C1	20.00'	35°26'17"	12.37'	6.39'
C2	20.00'	51°47'16"	18.08'	9.71'
C3	20.00'	47°52'51"	16.71'	8.88'
C4	20.00'	39°20'42"	13.73'	7.15'
C5	1254.00'	04°18'42"	94.37'	47.21'
C6	20.00'	87°13'33"	30.45'	19.05'
C7	20.00'	87°13'33"	30.45'	19.05'

ENGINEER OF WORK
 CROSBY MEAD BENTON & ASSOC.
 56050 EL CAMINO REAL SUITE 200
 CARLSBAD, CA 92008 (619) 438-1210

George L. Benton 1-25-95
 GEORGE L. BENTON / R.C.E. 14594
 EXP. DATE 3-31-97

STREET VACATION - SORRENTO HILLS WAY - SOUTHEAST OF CARMEL MOUNTAIN ROAD, FOR PROPOSED TORREY RESERVE HEIGHTS (T.M. 91-0361)

DESCRIPTION	BY	APPROVED	DATE	FILED	CITY OF SAN DIEGO, CALIFORNIA	SA92-514
					SHEET 1 OF 1 SHEET	W.O. 910361
					<i>George L. Benton</i> 2-8-95	1914-6257
					FOR CITY ENGINEER	CONTROL CERTIFICATION
						274-1697
						LAMBERT COORDINATES
						18279 -B



FILED
 DOCUMENT NO. **R2-285665**
 MAY 01 1995
 OFFICE OF THE CITY CLERK
 SAN DIEGO, CALIFORNIA

R-285665