


RESOLUTION NUMBER R-286257

ADOPTED ON AUGUST 15, 1995

BE IT RESOLVED, by the Council of The City of San Diego, that the acceptance by the City Manager of a grant deed of the REDEVELOPMENT AGENCY OF THE CITY OF SAN DIEGO, executed in favor of The City of San Diego, bearing date of April 12, 1995, a copy of which deed is on file in the office of the City Clerk as Document No. RR-286257-1, granting to said City an easement for public street purposes in Ocean Vista Gardens, Map No. 2208, WITHIN the boundaries of Tentative Map 94-0622, as more particularly shown and delineated on Drawing No. 27539-D, a copy of which is attached hereto as Exhibit A and by this reference incorporated herein; and granting to said City an easement for public street purposes in Pacific Tract No. 1, Map No. 1168 Block 1, Duncan's Addition Map No. 403 Blocks 419 and 420, OUTSIDE the boundaries of Tentative Map 94-0622, a copy of which is on file in the office of the City Clerk as Document No. RR-286257-2, as more particularly shown and delineated on said Exhibit A hereto; and a ten-foot wide (drainage easement) strip of land being a portion of Lot 46 of Ocean Vista Gardens, Map thereof No. 2208, a copy of which is on file in the office of the City Clerk as Document No. RR-286257-3, as more particularly shown and delineated on said Exhibit A hereto, be, and the same is hereby approved; and the land therein conveyed is hereby dedicated as and for a public street, and the same is hereby named ALPHA STREET.

BE IT FURTHER RESOLVED, that the City Clerk shall cause the deed and a certified copy of this resolution, attested by him under seal, to be recorded in the office of the County Recorder at no fee for the benefit of the City, with no documentary tax due.

APPROVED: JOHN W. WITT, City Attorney

By 
John K. Riess
Senior Deputy City Attorney

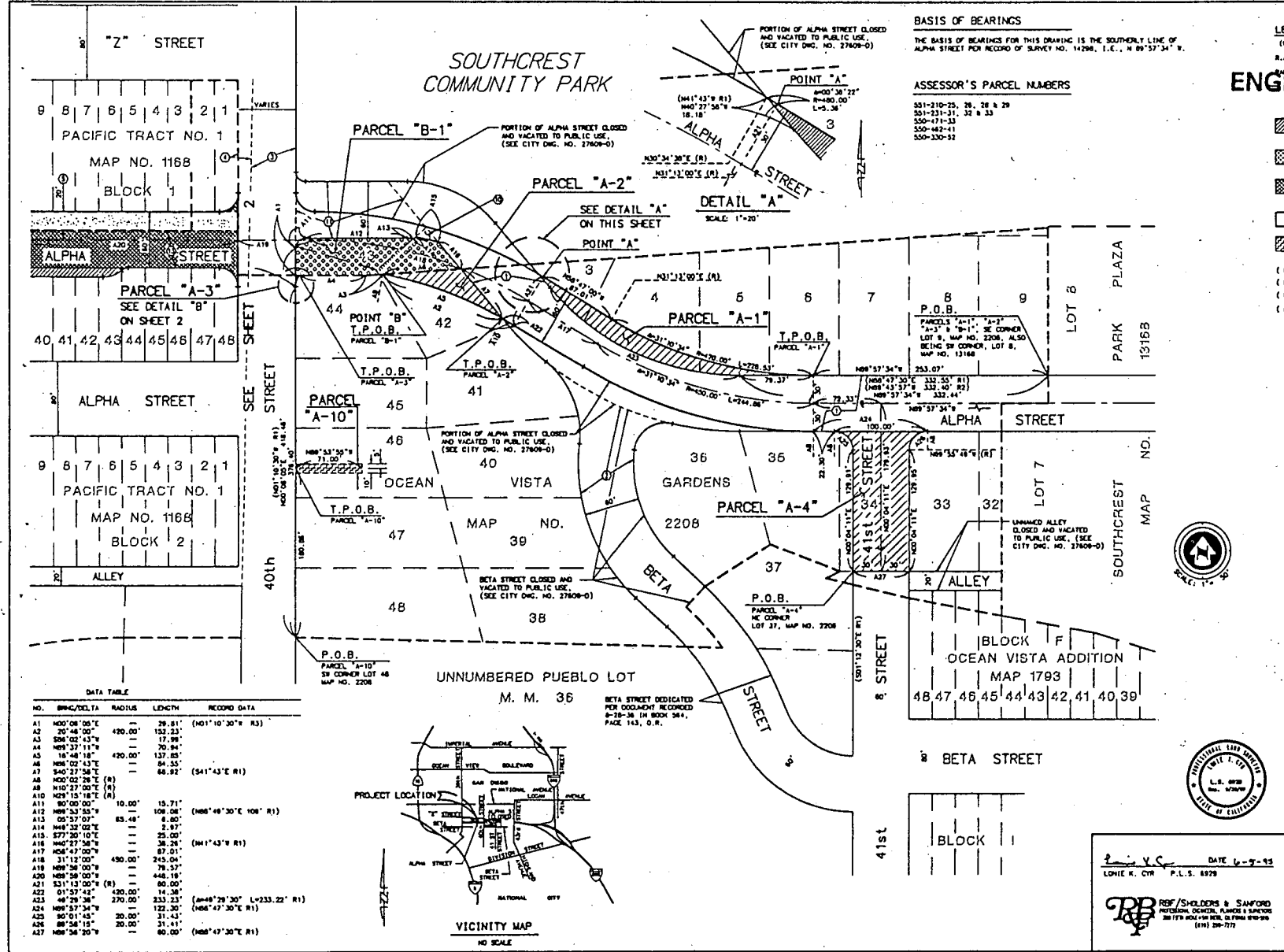
HOV:ps:pev
07/31/95
09/05/95 Cor.Copy
09/07/95 Cor.Copy
Or.Dept:Dev.Svcs.
TM.94-0622
R-96-119
Form=r.deedr

RECEIVED

AUG 01 1995

ENGINEERING SERVICES

286257



BASIS OF BEARINGS

THE BASIS OF BEARINGS FOR THIS DRAWING IS THE SOUTHERLY LINE OF ALPHA STREET PER RECORD OF SURVEY NO. 14296, I.E., N 89°37'34" W.

ASSESSOR'S PARCEL NUMBERS

- 551-210-25, 26, 28 & 29
- 551-231-31, 32 & 33
- 550-171-33
- 550-462-41
- 550-330-32

LEGEND

- (R) INDICATES RADIAL BEARING
- R.A.P. INDICATES THE REDEVELOPMENT AGENCY OF THE CITY OF SAN DIEGO
- INDICATES CITY OF SAN DIEGO LAND (SOUTHWEST COMMUNITY PARK)
- INDICATES STREET DEDICATION (R.A.P.)
- INDICATES STREET DEDICATION (PARK)
- INDICATES STREET DEDICATION NAMED AS OFFER OF DEDICATION ACCEPTANCE (R.A.P.)
- INDICATES NAMING ALPHA STREET, FORMERLY UNNAMED ALLEY (PARCEL "A-9")
- INDICATES DRAINAGE EASEMENT ACQUIRED (PARCEL "A-10") (AREA: 0.016 ACRES)
- (R1) INDICATES RECORD DATA PER MAP NO. 2208.
- (R2) INDICATES RECORD DATA PER MAP NO. 13164.
- (R3) INDICATES RECORD DATA PER MAP NO. 1793.
- (R4) INDICATES RECORD DATA PER IRREVOCABLE OFFER OF DEDICATION TO THE CITY OF SAN DIEGO PER DOCUMENT RECORDED 9-20-94 AS FILE NO. 1984-081022, O.R.
- (1) INDICATES ALPHA STREET DEDICATED PER MAP NO. 2208.
- (2) INDICATES BETA STREET DEDICATED PER MAP NO. 2208.
- (3) INDICATES PORTION OF ALPHA STREET DEDICATED PER MAP NO. 1793.
- (4) INDICATES PORTION OF ALPHA STREET DEDICATED PER MAP NO. 1168.
- (5) INDICATES UNNAMED ALLEY DEDICATED PER MAP NO. 1168.
- (6) INDICATES ALPHA STREET DEDICATED PER MAP NO. 1168.
- (7) INDICATES ALPHA STREET DEDICATED PER MAP 403.
- (8) INDICATES ALPHA STREET DEDICATED PER MAP 403.
- (9) INDICATES PORTION OF BETA STREET DEDICATED PER MAP 403.
- (10) INDICATES PORTION OF ALPHA STREET DEDICATED PER DOCUMENT RECORDED 9-20-94 IN BOOK 7187, PAGE 452, O.R. (CITY DNG. NO. 1793-8)
- (11) INDICATES PORTION OF ALPHA STREET DEDICATED PER DOCUMENT RECORDED 9-20-94 IN BOOK 7454, PAGE 478, O.R. (CITY DNG. NO. 1793-9)
- (12) INDICATES IRREVOCABLE OFFER OF DEDICATION FOR PUBLIC STREET TO THE CITY OF SAN DIEGO PER DOCUMENT RECORDED 9-20-94 AS FILE NO. 1984-081022, O.R.
- (13) INDICATES PORTION OF BETA STREET DEDICATED PER MAP 140.

DATA TABLE

NO.	BPC/Delta	RADIUS	LENGTH	RECORD DATA
A1	N00°08'00"E	420.00'	39.81'	(N01°10'30"E R3)
A2	S0°46'00"E	420.00'	153.23'	
A3	S84°02'43"W	---	17.96'	
A4	N89°37'17"W	---	70.34'	
A5	S4°48'18"E	420.00'	137.85'	
A6	N04°02'43"E	---	84.35'	
A7	S40°27'58"E (R)	---	68.92'	(S41°43'E R1)
A8	N02°02'28"E (R)	---	---	
A9	N10°27'00"E (R)	---	---	
A10	N01°15'18"E (A)	10.00'	15.71'	
A11	S0°00'00"E	---	106.00'	(N08°48'30"E 108' R1)
A12	N08°53'53"E	---	85.48'	
A13	S0°57'00"E	---	2.97'	
A14	N44°32'00"E	---	25.00'	
A15	S77°20'10"E	---	38.28'	
A16	N90°27'36"E	---	87.01'	(N41°43'W R1)
A17	N04°47'00"E	---	245.04'	
A18	S1°12'00"E (R)	430.00'	448.18'	
A19	N09°36'00"E	---	60.00'	
A20	N89°36'00"E	---	78.57'	
A21	S31°13'00"E (R)	---	14.38'	
A22	01°57'42"E	120.00'	333.22'	(N08°29'30" L=233.22' R1)
A23	46°29'36"E	270.00'	31.43'	(N08°47'30"E R1)
A24	N09°53'34"E	---	31.43'	
A25	S0°01'45"E	20.00'	40.00'	(N08°47'30"E R1)
A26	S8°58'15"E	---	---	
A27	N08°54'30"E	---	---	



DATE 6-9-95
 LOWELL K. CYR P.L.S. 6979
 REF/SHELDERS & SANFORD
 PROFESSIONAL ENGINEERS & ARCHITECTS
 280 FIFTH AVENUE, SUITE 200
 SAN DIEGO, CALIFORNIA 92101
 (619) 596-7770

STREET DEDICATION - ALPHA STREET -
 BETWEEN 40th STREET AND 41st STREET AND THOSE PORTIONS OF LOTS 38-44, BLOCK 1, PACIFIC TRACT NO. 1, MAP 1168

STREET DEDICATION - ALPHA STREET -
 THOSE PORTIONS OF LOTS 14-24, BLOCK 419, LOTS 35-46, BLOCK 450 AND A PORTION OF TRACTUAL LOT 25, BLOCK 443 OF DEACAN'S ADDITION, MAP 403 AND A PORTION OF LOT 1 AND LOTS 25-46, BLOCK 1 OF PACIFIC TRACT NO. 1, MAP 1168, NAMED AS IRREVOCABLE OFFER TO DEDICATE PUBLIC STREET.

STREET DEDICATION - 41st STREET -
 THOSE PORTIONS OF LOTS 33-35, OCEAN VISTA GARDENS, MAP 2208

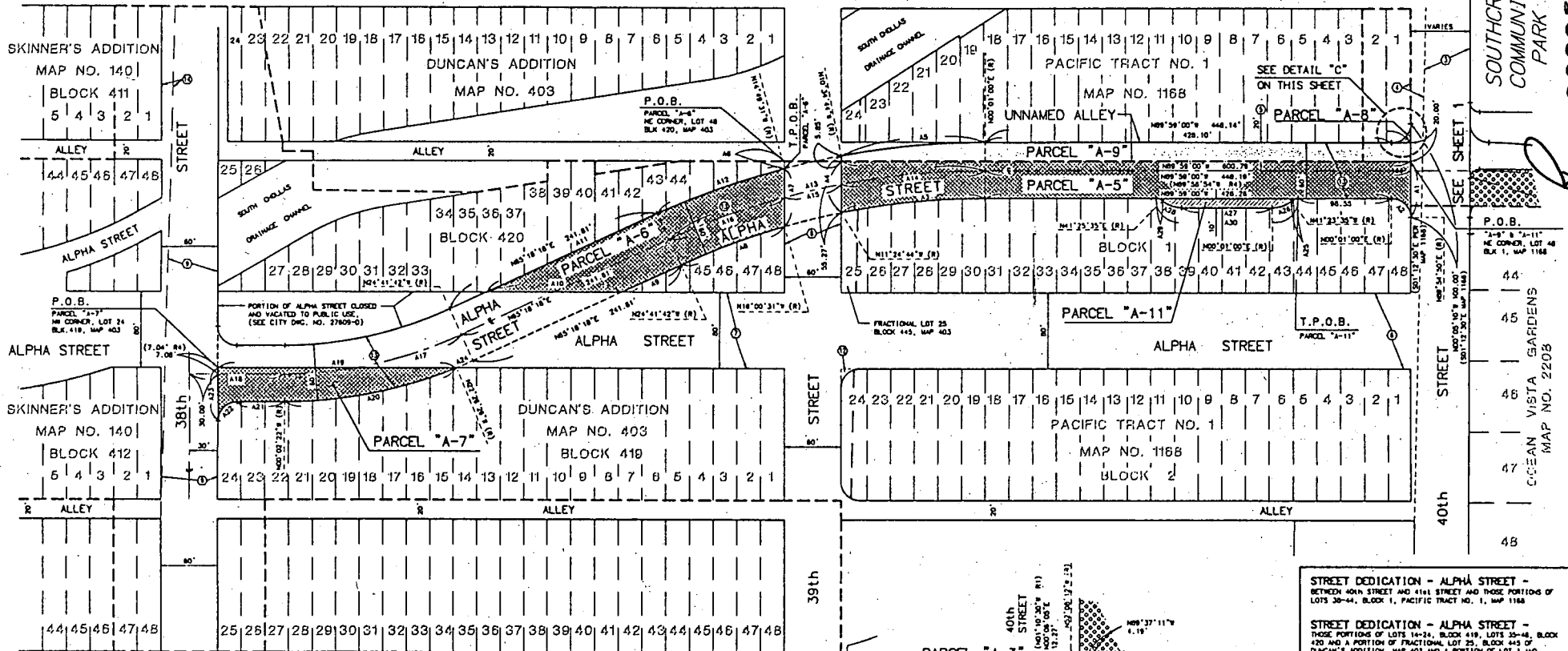
STREET NAMING - ALPHA STREET -
 UNNAMED ALLEY IN BLOCK 1 OF PACIFIC TRACT NO. 1, MAP 1168

DRAINAGE EASEMENT -
 IN LOT 46, OCEAN VISTA GARDENS, MAP 2208

CITY OF SAN DIEGO, CALIFORNIA		SHEETS 1 OF 2 SHEETS		P.O. 240492	
DESIGNER/ENGINEER		DATE 7-26-95		SCALE	
ORIGINAL	BY	APPROVED	DATE	FILED	
					1832-4293
					0015-000000
					182-1733
					182-1733
AS SHOWN					27539-1-0
CONTRACTOR					
REVISION					

"Z" STREET

"Z" STREET



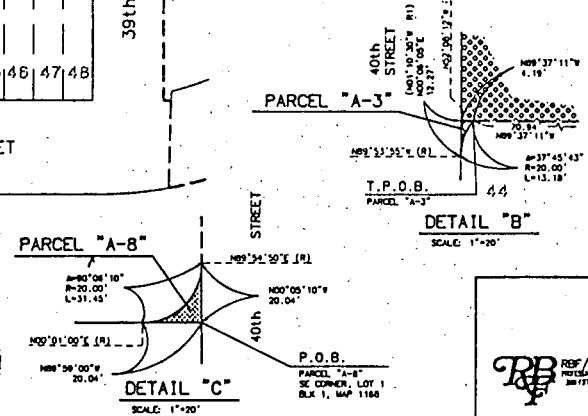
SOUTHCREST COMMUNITY PARK
 286257
 C-CLEAN VISTA GARDENS MAP NO. 2208
 44
 45
 46
 47
 48
 SEE SHEET 1
 SEE SHEET 1
 SEE DETAIL "C" ON THIS SHEET
 SEE DETAIL "C" ON THIS SHEET

DATA TABLE				DATA TABLE				RECORD DATA	
NO.	BRG/Delta	RADIUS	LENGTH	NO.	BRG/Delta	RADIUS	LENGTH		
A1	S00°05'10"E	20.00'	58.88'	A13	T4°42'42"	800.00'	343.06'	(A=24°42'41" R#)	
A2	S9°53'50"	20.00'	31.36'	A14	T0°58'41"	800.00'	153.54'		
A3	N1°25'44"	770.00'	153.26'	A15	O4°25'14"	800.00'	81.72'		
A4	N02°01'17"W	—	81.12'	A16	O9°17'41"	800.00'	129.78'	(A=24°38'18" R#)	
A5	T0°33'44"	830.00'	153.49'	A17	T4°38'20"	450.00'	183.64'	(N9°37'44" R#)	
A6	S00°01'17"E	—	7.72'	A18	N89°57'36"E	—	100.32'		
A7	S00°01'17"E	—	82.23'	A18	S89°50'44"E	—	253.23'		
A8	O8°41'11"	—	116.74'	A20	T2°24'04"	480.00'	107.87'	(S00°02'18" R#)	
A9	S85°18'18"W	770.00'	88.52'	A21	S89°57'36"W	—	30.32'		
A10	N89°30'44"W	—	142.78'	A22	S00°00'00"	20.00'	31.41'		
A11	N85°18'18"E	—	189.00'	A23	N02°02'22"W	—	57.00'		
A12	O8°52'11"	830.00'	142.80'	A24	O2°15'16"	480.00'	18.89'		
				A25	N1°24'35"	10.00'	7.23'		
				A26	N89°58'00"W	—	96.00'		
				A27	N1°24'35"	30.00'	21.68'		
				A28	N89°58'00"W	—	21.68'		
				A29	N1°24'35"	10.00'	7.23'		
				A30	S89°58'00"E	—	148.92'		

NOTE: FOR LEGEND SEE SHEET 1



BETA STREET



STREET DEDICATION - ALPHA STREET - BETWEEN 40th STREET AND 41st STREET AND THOSE PORTIONS OF LOTS 30-44, BLOCK 1, PACIFIC TRACT NO. 1, MAP 1168
STREET DEDICATION - ALPHA STREET - THOSE PORTIONS OF LOTS 14-24, BLOCK 419, LOTS 30-48, BLOCK 420 AND A PORTION OF FRACTIONAL LOT 25, BLOCK 445 OF DUNCAN'S ADDITION, MAP 403 AND A PORTION OF LOT 1 AND LOTS 20-48, BLOCK 1 OF PACIFIC TRACT NO. 1, MAP 1168, MARKED AS IRREVOCABLE OFFER TO DEDICATE PUBLIC STREET.
STREET DEDICATION - 41st STREET - THOSE PORTIONS OF LOTS 33-35, OCEAN VISTA GARDENS, MAP 2208
STREET NAMING - ALPHA STREET - UNNAMED ALLEY IN BLOCK 1 OF PACIFIC TRACT NO. 1, MAP 1168
DRAINAGE EASEMENT - IN LOT 48, OCEAN VISTA GARDENS, MAP 2208

CITY OF SAN DIEGO, CALIFORNIA		DRAWING NUMBER SHEET 2 OF 2 SHEETS		R.O. 240482	
City Engineer <i>[Signature]</i>		City Engineer <i>[Signature]</i>		1837-4293 182-1733 27539-2-D	
DESCRIPTION	BY	APPROVED	DATE	FILED	
AS BUILT	DATE STARTED	DATE COMPLETED			

REF/SHOULDERS & SANFORD
 PROFESSIONAL ENGINEERS, PLANNERS & ARCHITECTS
 300 17th ST. - 16th FLOOR - SAN DIEGO, CA 92101
 (619) 591-7272

SHEET NO: 501183
 DRAWING NO: 1185-002
 PLOT: 05-10-85