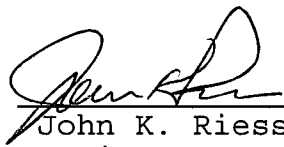


RESOLUTION NUMBER R- **287083**  
ADOPTED ON **APR 01 1996**

BE IT RESOLVED, by the Council of The City of San Diego, that condition 4 of Resolution No. R-283484, adopted on March 7, 1994, be, and it is hereby amended to read as follows:

4. That this resolution shall not become effective unless and until the required public improvements, which include the relocation of street improvements, are constructed and a 10-foot curb-to-property-line distance maintained in a manner satisfactory to the City Engineer. In the event that this condition is not complied with by March 7, 1998, this resolution shall become void and be of no further force or effect.

APPROVED: JOHN W. WITT, City Attorney

By   
John K. Riess  
Senior Deputy City Attorney

JKR:pev  
03/07/96  
03/21/96 Cor.Copy  
Or.Dept:DSD  
R-96-1027  
Form=r-t

287083

BAY VIEW HOMESTEAD  
LOT 11  
BLK 7  
MAP No. 150

BEACH TOWER  
LOT 1  
MAP No. 10102

7th AVENUE

CEDAR STREET

STREET

( DEDICATED PER MAP No. 150 )

8th AVENUE

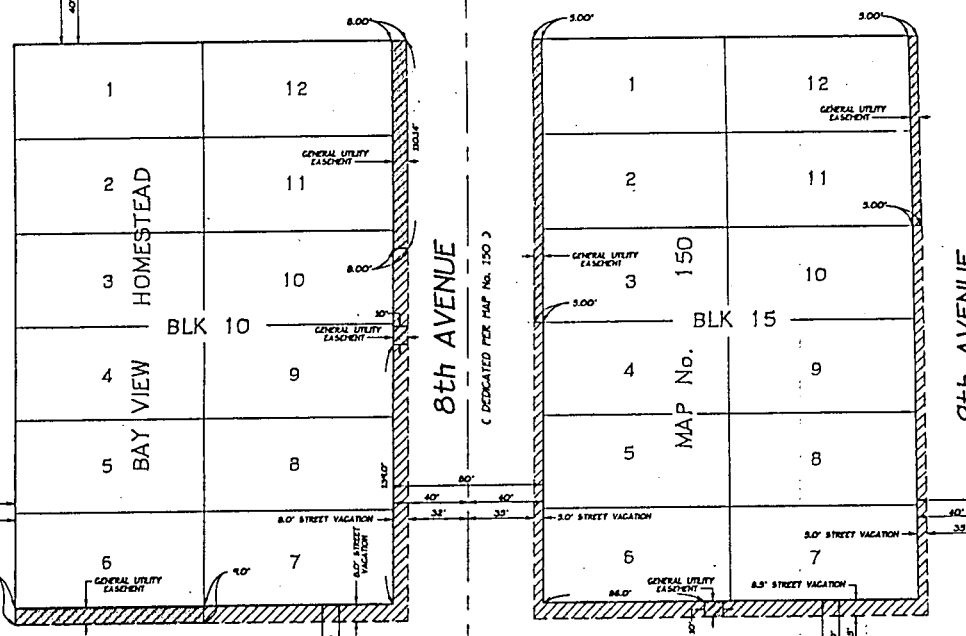
9th AVENUE

( DEDICATED PER MAP No. 150 )

BEECH STREET

STREET

( DEDICATED PER MAP No. 150 )



REFERENCE DRAWINGS:

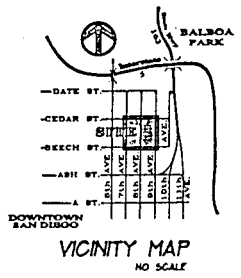
MAP No. 150  
MAP No. 224  
MAP No. 10102

NOTES:

- 1. ALL LOTS IN BLOCKS 10 + 15 OF BAY VIEW HOMESTEAD MEASURE 30.00 FEET BY 100.00 FEET PER RECORD MAP No. 150.

LEGEND:

- [Hatched pattern] INDICATES STREET VACATED + CLOSED TO PUBLIC USE.
- [Stippled pattern] INDICATES GENERAL UTILITY EASEMENT

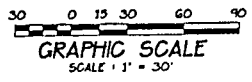


STREET VACATION:

**BEECH STREET:**  
ADJACENT TO LOTS 6 + 7 OF BLOCK 10 OF BAY VIEW HOMESTEAD MAP No. 150  
ADJACENT TO LOTS 6 + 7 OF BLOCK 15 OF BAY VIEW HOMESTEAD MAP No. 150 AND 8th AVENUE  
**8th AVENUE:**  
ADJACENT TO LOTS 7 - 12 OF BLOCK 10 OF BAY VIEW HOMESTEAD MAP No. 150  
ADJACENT TO LOTS 1 - 6 OF BLOCK 15 OF BAY VIEW HOMESTEAD MAP No. 150 AND 9th AVENUE  
**9th AVENUE:**  
ADJACENT TO LOTS 7 - 12 OF BLOCK 15 OF BAY VIEW HOMESTEAD MAP No. 150 IN THE CITY OF SAN DIEGO COUNTY OF SAN DIEGO STATE OF CALIFORNIA.  
**GENERAL UTILITY EASEMENT RESERVATION:**  
PORTIONS OF BEECH STREET ADJACENT TO LOT 6 IN BLK 10 AND LOT 6 IN BLK 15, AND PORTIONS OF 8th AVENUE ADJACENT TO LOTS 6 10 11 + 12 IN BLK 10 AND LOTS 1 2 + 3 IN BLK 15 AND A PORTION OF 9th AVENUE ADJACENT TO LOTS 11 + 12 IN BLK 15 ALL OF BAY VIEW HOMESTEAD MAP No. 150 IN THE CITY OF SAN DIEGO COUNTY OF SAN DIEGO STATE OF CALIFORNIA.

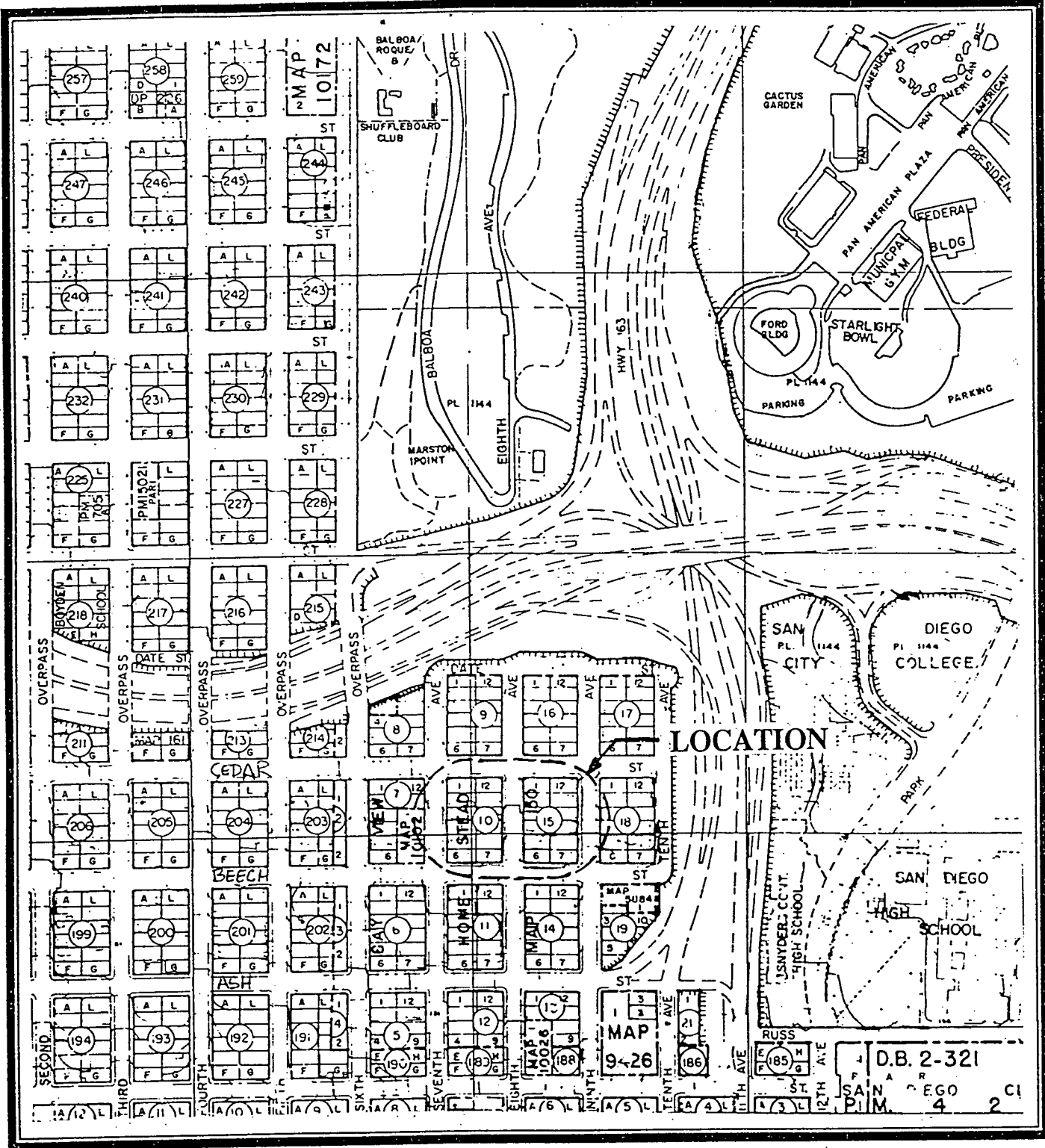
CITY OF SAN DIEGO, CALIFORNIA		NO. 120102
ENGINEERING DEPARTMENT		NO. SA43-304
Sheet 1 of 1 Sheet		
DESIGNED BY	DATE	
APPROVED BY	DATE	
DATE	BY	PLANS
1842-6279		
202-1719		
27247-D		

**XEI ENGINEERING SURVEYING PLANNING**  
9019 CHESAPEAKE DR. SUITE 102 SAN DIEGO, CA. 92123 (619) 278-3310



ENGINEER OF WORK:  
*[Signature]*  
STREET & SHOS SCE 37399 6-8-94





THE CITY OF  
**SAN DIEGO**

DEVELOPMENT SERVICES DEPARTMENT  
 LAND DEVELOPMENT REVIEW DIVISION

LOCATION MAP

NO SCALE

R- 287083