

RESOLUTION NUMBER 288264

ADOPTED ON DEC 10 1996

WHEREAS, in Closed Session on December 10, 1996, the City Council, by a unanimous vote, approved the following; NOW, THEREFORE,

BE IT RESOLVED, by the Council of The City of San Diego, that the City Manager is hereby authorized to execute a partial Settlement Agreement with the plaintiffs in the case Torrey Pines Investment Group, Inc., et al. v. City of San Diego, San Diego Superior Court Case No. 690329 (the "Litigation"), on the terms and conditions set forth in the agreement on file in the Office of the City Clerk as Document No. RR - 288264-1, together with such ancillary terms as may be necessary to carry out the purpose and intent of the settlement.

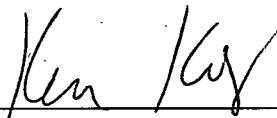
BE IT FURTHER RESOLVED, the proposed settlement includes the City's acceptance of title to approximately 80 acres of two separate parcels of property owned by Mesa Top Properties I and II ("Mesa Top") located in Neighborhood 8 and Neighborhood 8A and east of Interstate 5, and more fully shown on the diagram attached hereto as Exhibit "A";

BE IT FURTHER RESOLVED, an appraisal from a qualified Real Estate Appraiser that the value of the parcel(s) to be acquired is approximately \$11,700,000; and

BE IT FURTHER RESOLVED, that the City Manager be and he is authorized to execute a Stipulation for Judgment in the Litigation, in order to implement the terms of the Settlement Agreement, on the terms and conditions set forth in the Stipulation on file in the Office of the City Clerk as Document No. RR- 288264-2.

BE IT FURTHER RESOLVED, that the City Manager, and City Auditor and  
Comptroller be and they are hereby authorized to take any further actions as may be necessary or  
proper, including the transfer, payment, deposit or borrowing of funds to implement the  
Settlement Agreement and Stipulated Judgment.

APPROVED: CASEY GWINN, City Attorney

By   
Keri G. Katz  
Deputy City Attorney

KGK:kjk:Civ.

12/2/96

Or.Dept:Atty

Aud.Cert:

R-97-611

Form=reswot.res

L:\KATZ\690329\PLEADING\MESATOP.RES

08

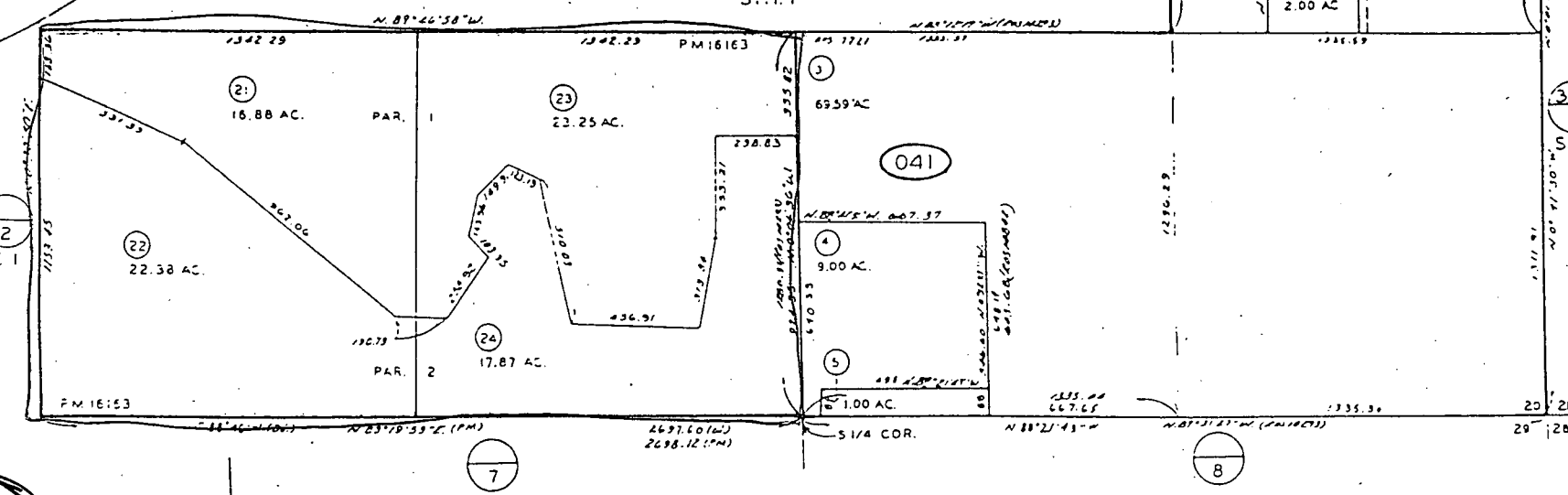
307-04  
SHT. 20F2

1" = 400'

CHANGES			
BLK	OLD	NEW	YR CUT
041	10	19650	78 1162
	11	2129	91 1503
	12	228	26 3297
	13		
	14		
	15		
	16		
	17		
	18		
	19		
	20		
	21		
	22		
	23		
	24		

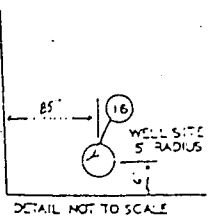
HWY 156

307-54



288264

370 +  
2973



THIS MAP WAS PREPARED FOR ASSESSMENT PURPOSES OR T. NO LIABILITY IS ASSUMED FOR THE ACCURACY OF THE DATA SHOWN. ASSESSOR'S PARCELS MAY NOT COMPLY WITH LOCAL SUBDIVISION OR BUILDING ORDINANCES

SAN DIEGO COUNTY ASSESSOR'S MAP BR 007 PG 04 SHT. 2 OF 2

SEC 20 - T14S-R3W - PQR S 1/2  
ROS 7721, 8545, 42293, 14542, 15068

# Exhibit A