

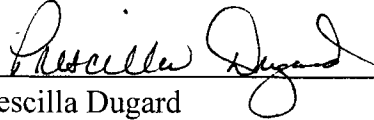
(R-98-74)

RESOLUTION NUMBER R- 289028

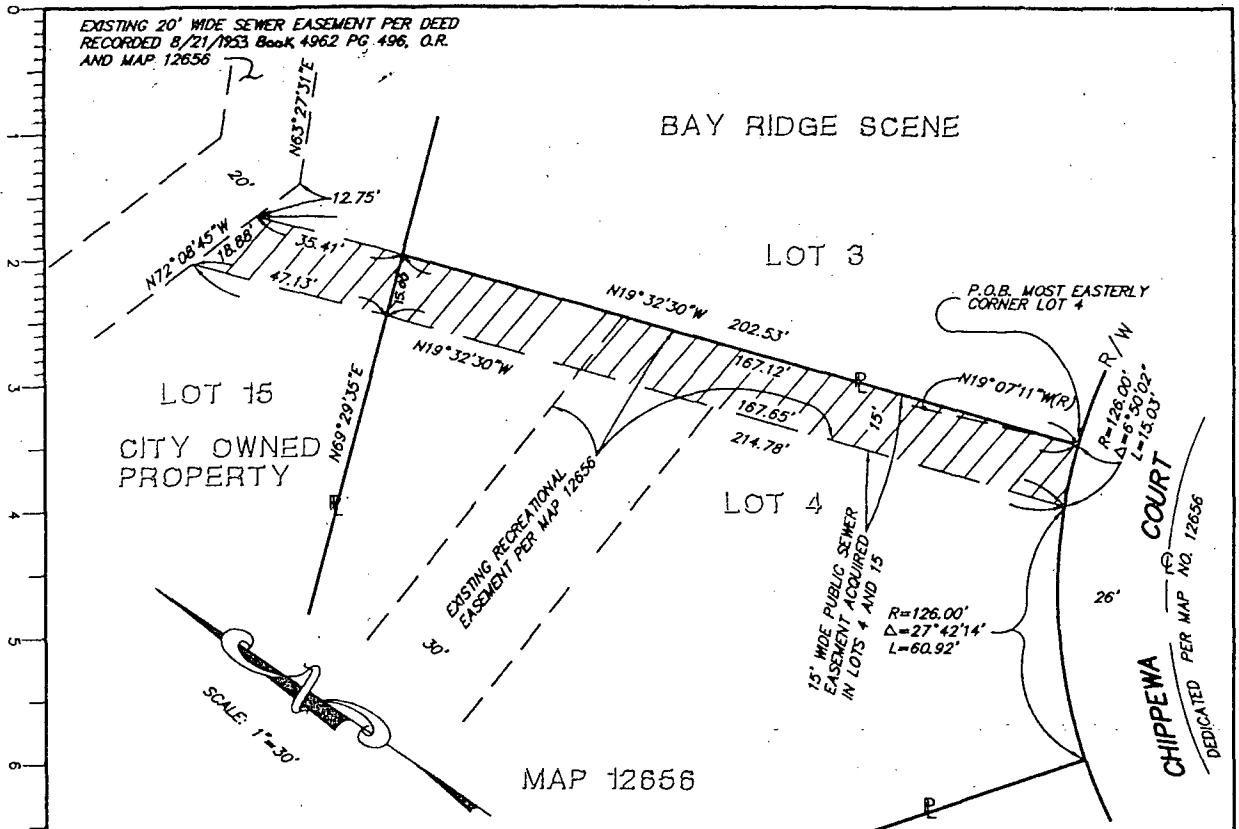
ADOPTED ON AUG 05 1997

BE IT RESOLVED by the Council of The City of San Diego that a sewer easement set aside in City-owned land in Lot 15 of Bay Ridge Scene, Map No. 12656, as shown on Drawing No. 18531-B attached hereto and made a part hereof, be and the same is hereby accepted.

APPROVED: CASEY GWINN, City Attorney

By 
Prescilla Dugard
Deputy City Attorney

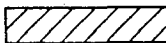
PD:cdk
07/18/97
Or.Dept:Dev.Svcs.
R-98-74



BASIS OF BEARINGS

THE BASIS OF BEARINGS FOR THIS MAP IS THE EAST LINE OF BAY RIDGE SCENE MAP NO. 12656, I.E. $N00^{\circ}27'31"E$

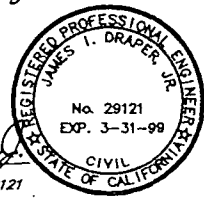
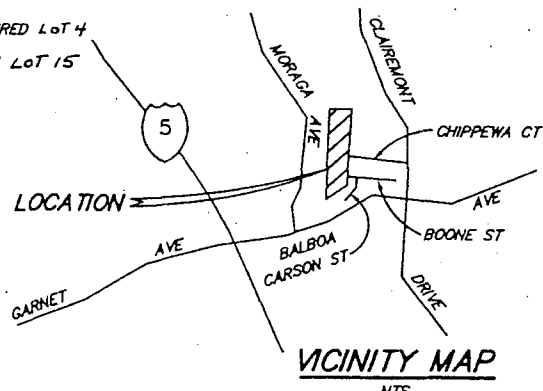
LEGEND

 INDICATES SEWER EASEMENT ACQUIRED LOT 4
2508.5 SQ. FT.
SEWER EASEMENT SET ASIDE LOT 15
619.1 SQ. FT.

APN 418-111-16 & 676-020-06

REFERENCE DRAWING

MAP 12656, 25025-2&3-D



James I. Draper, Jr.
JAMES I. DRAPER JR. RCE 29121
EXP. 3-31-99

DRAPER ENGINEERING
P.O. BOX 3346
LA MESA, CA. 91944-3346
PHONE: 619-464-6528
FAX: 619-464-8753

**SEWER EASEMENT--IN LOT 4 AND
SEWER EASEMENT SET ASIDE IN LOT 15
OF BAY RIDGE SCENE MAP 12656**

DESCRIPTION	BY	APPROVED	DATE	FILED	CITY OF SAN DIEGO, CALIFORNIA	D. NO. <u>None</u>
ORIGINAL					SHEET 1 OF 1 SHEET	W.O. NO. <u>880201</u>
					<i>John Hanna</i> 4-14-97 FOR CITY ENGINEER DATE	1874-6265 C.C.E.(NAD 83) COORDINATES
					DIVISION HEAD	234-1705 LAMBERT COORDINATES
					SECTION HEAD	18531-B