

RESOLUTION NUMBER R- 289083

ADOPTED ON AUG 11 1997

A RESOLUTION OF THE COUNCIL OF THE CITY OF SAN DIEGO AMENDING THE BOUNDARIES OF THE REDEVELOPMENT SURVEY AREA FOR THE PROPOSED NORTH BAY REDEVELOPMENT PROJECT AND AUTHORIZING A STUDY OF THE FEASIBILITY OF A REDEVELOPMENT PROJECT OR PROJECTS WITHIN THE SURVEY AREA.

WHEREAS, in conjunction with studies that have been conducted for the proposed reuse of the Naval Training Center, The City of San Diego (the "City") has preliminarily studied the feasibility of creating a North Bay Redevelopment Project area; and

WHEREAS, on May 14, 1996, by Resolution No. R-287333, the Council of The City of San Diego designated certain boundaries for a Redevelopment Survey Area for the proposed North Bay Redevelopment Project area (the "Survey Area"); and

WHEREAS, in conducting preliminary studies of the Survey Area, it has been determined that the Survey Area should be amended to include additional properties necessary for a successful redevelopment effort; and

WHEREAS, on July 31, 1997, the Planning Commission of The City of San Diego reviewed the proposed new boundaries for the Survey Area, and recommended that the City Council approve the designation of the Survey Area as amended; and

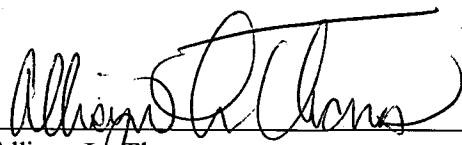
WHEREAS, the boundaries of the proposed Survey Area, as amended, are as illustrated on Attachment No. 1, attached hereto and incorporated herein by this reference; NOW,

THEREFORE,

BE IT RESOLVED, by the Council of The City of San Diego, as follows:

1. That the City Council hereby designates as a redevelopment survey area, pursuant to Section 33310 of the California Community Redevelopment Law (codified in California Health and Safety Code as Section 33000 et seq.), the land with boundaries as illustrated on Attachment No. 1 of this Resolution. The Survey Area shall be known as the North Bay Redevelopment Survey Area, and the Survey Area adopted on May 14, 1996, by Resolution No. R-287333, is hereby deemed to no longer represent the correct boundaries of the Survey Area.
2. That the City Council hereby finds that the Survey Area requires study to determine if a redevelopment project, or projects, within the Survey Area is feasible.
3. That the study of the feasibility of a redevelopment project or projects with the new boundaries of the Survey Area is hereby authorized.

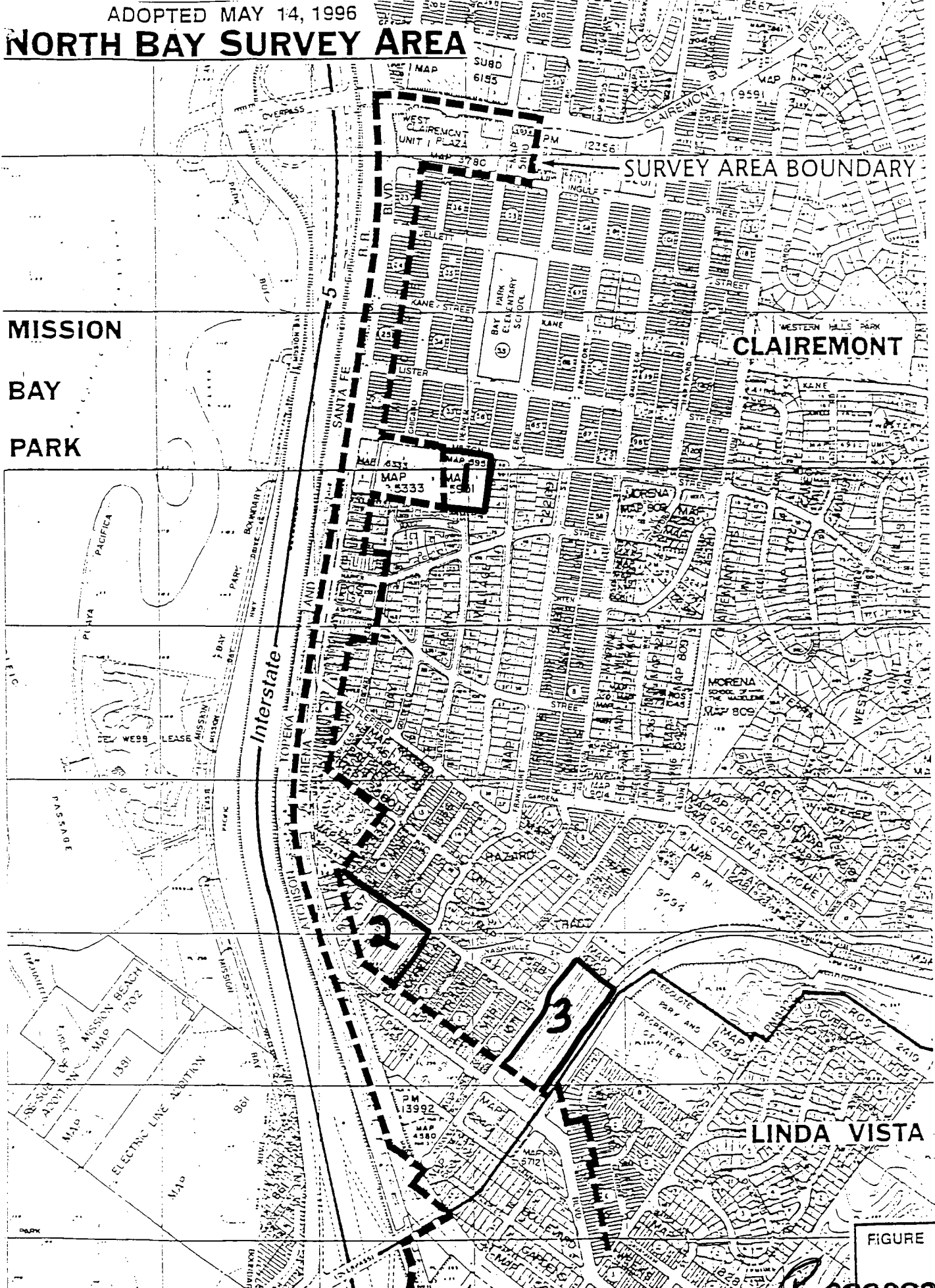
APPROVED: CASEY GWINN, City Attorney

By 
Allisyn L. Thomas
Deputy City Attorney

ALT:lc
08/31/97
Or.Dept:Redev.
Aud.Cert:N/A
R-98-151
Form=r&t.frm

ADOPTED MAY 14, 1996

NORTH BAY SURVEY AREA



MISSION
BAY
PARK

SURVEY AREA BOUNDARY

CLAIREMONT

LINDA VISTA

FIGURE

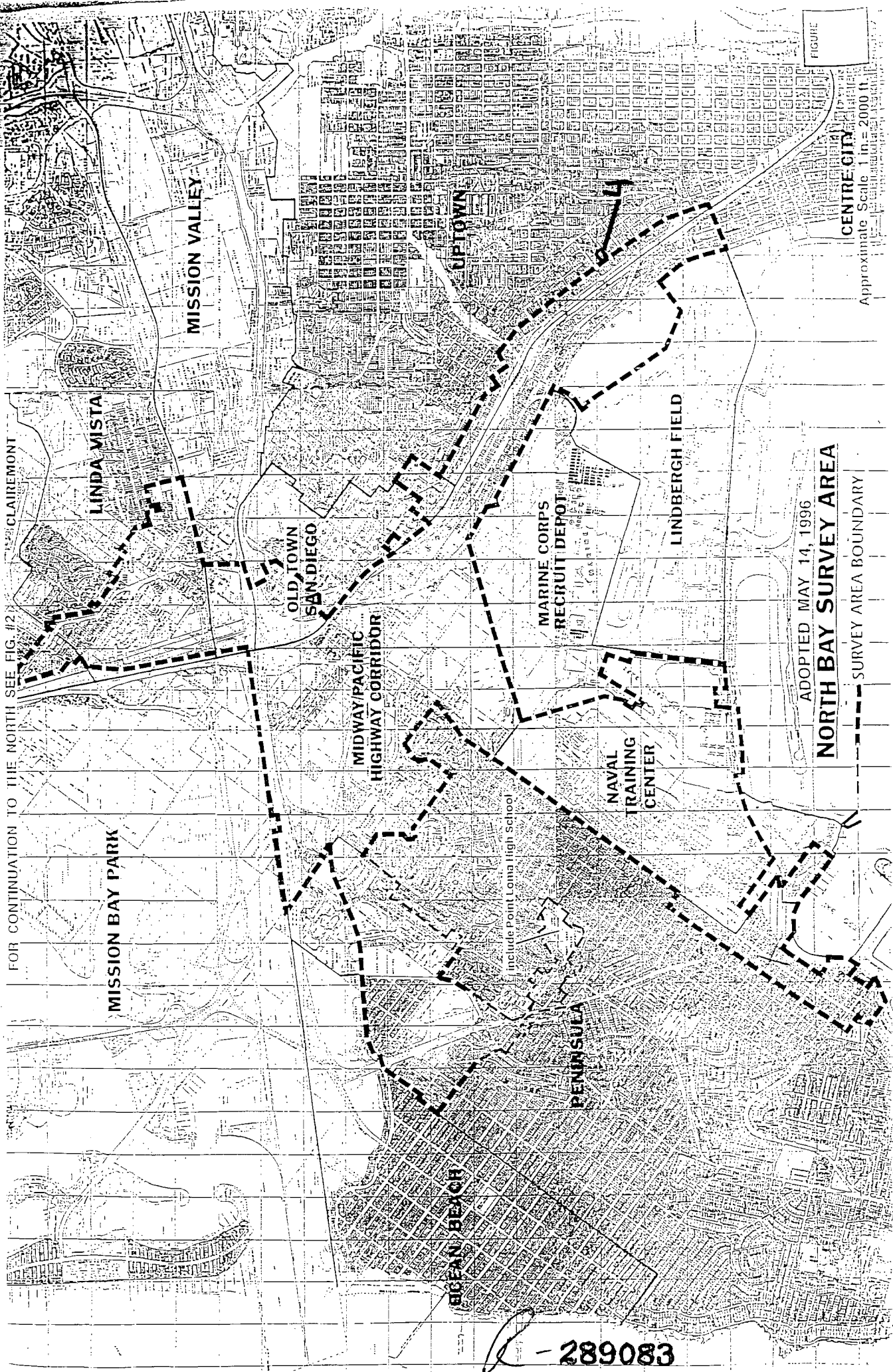
289083

FOR CONTINUATION TO THE SOUTH SEE FIG. #1

Scale 1 in. = 600 ft.

ATTACHMENT NO. 1

FOR CONTINUATION TO THE NORTH SEE FIG. #2



CLAIREMONT

MISSION BAY PARK

LINDA MISTA

MISSION VALLEY

OLD TOWN
SAN DIEGO

MIDWAY/PACIFIC
HIGHWAY CORRIDOR

OCEAN BEACH

PENINSULA

NAVAL
TRAINING
CENTER

MARINE CORPS
RECRUIT DEPT

LINDBERGH FIELD

UPTOWN

CENTRE CITY

ADOPTED MAY 14, 1996

NORTH BAY SURVEY AREA

--- SURVEY AREA BOUNDARY

Approximate Scale 1 in = 2000 ft

FIGURE

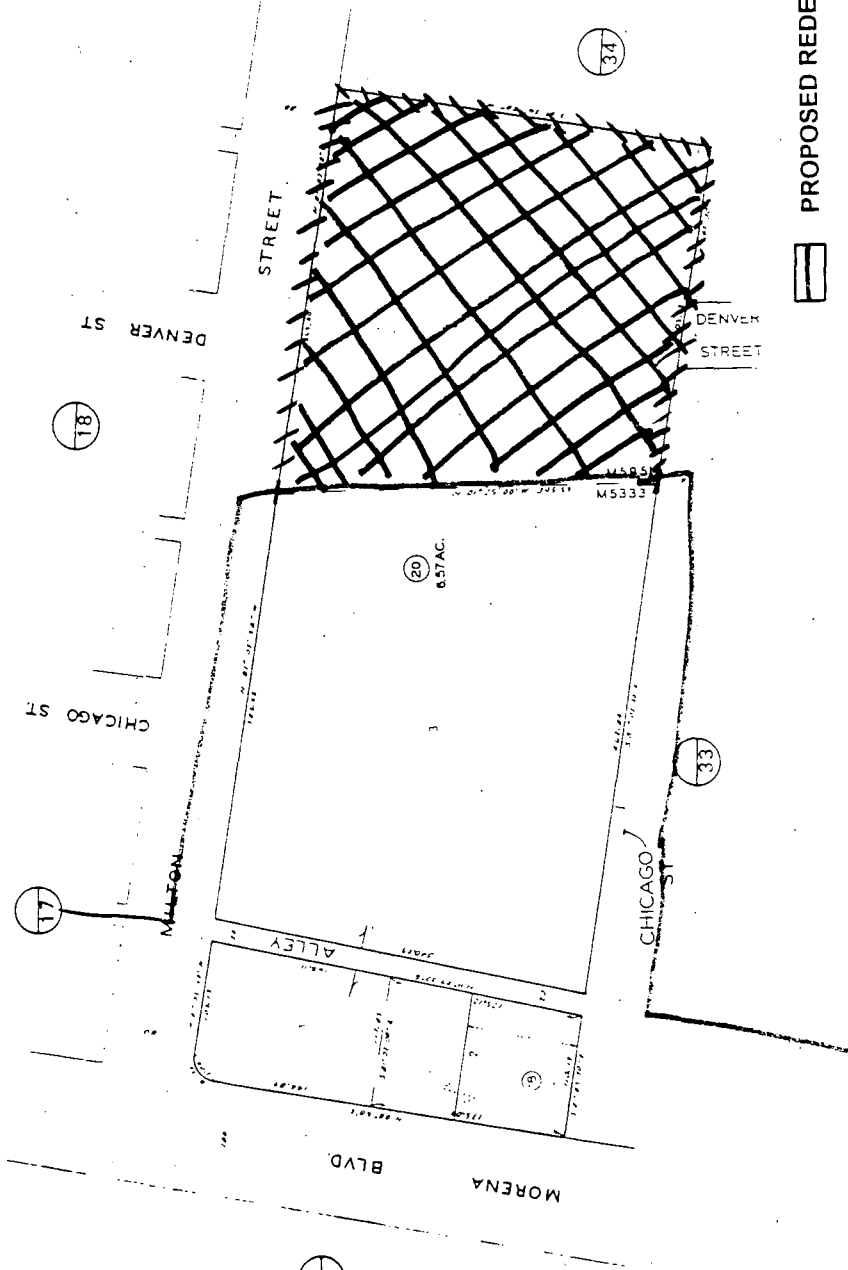
- 289083

MAP J

430-84
1" = 100'
212520

S-28-75 R15

CHANGES	BLK	OLD	NEW	IRREG CUT
17	27	29	24	0/0
18	20	16	5/16	



PROPOSED REDEVELOPMENT BOUNDARY

PROPOSED AMENDMENTS TO THE SURVEY AREA

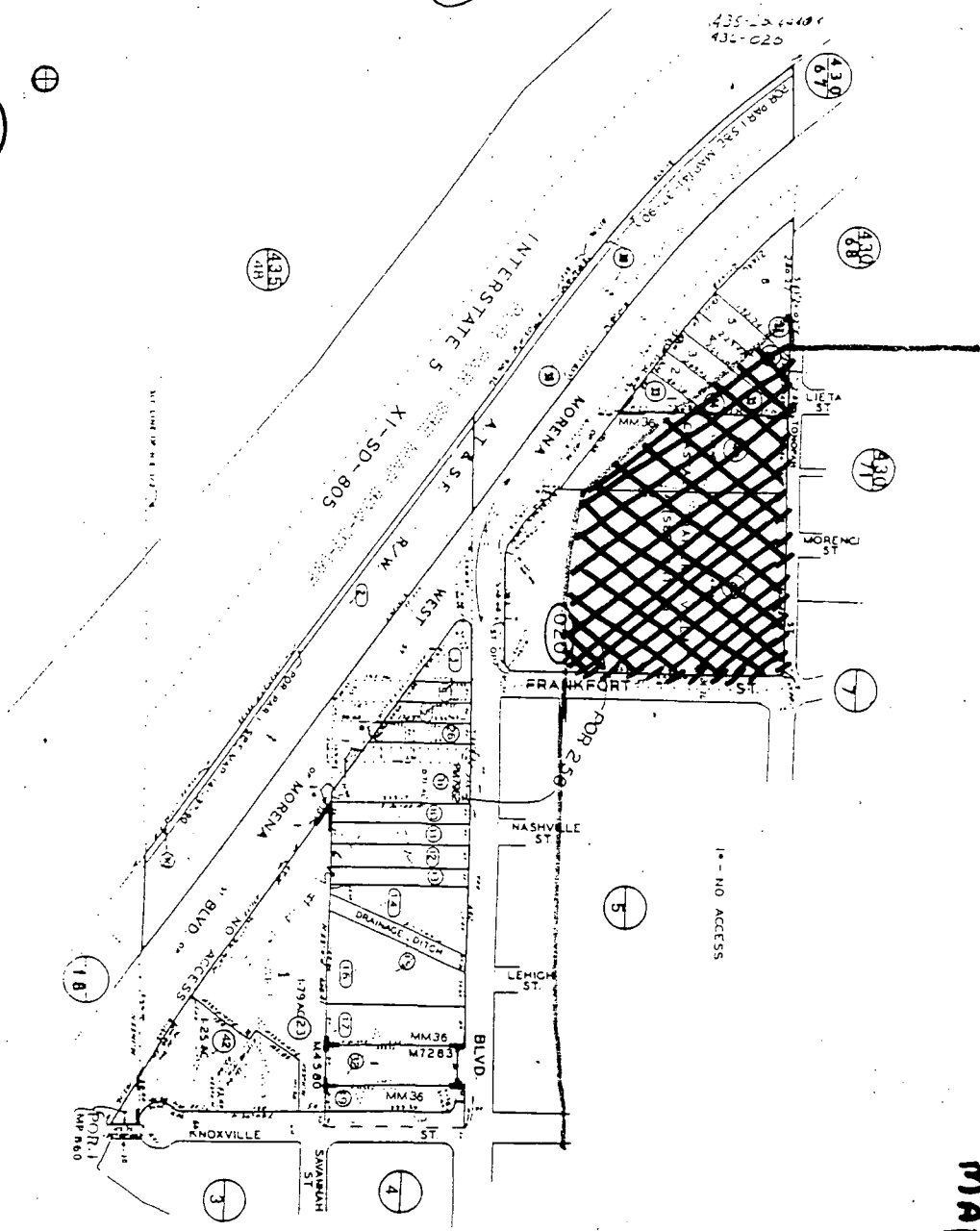
289083

MAP 5951 - DAVIDSON - MILLER TRACT RESUB
MAP 5333 - DAVIDSON - MILLER TRACT - LOTS 1-3

289083

SAN DIEGO COUNTY
 ASSESSOR'S MAP
 BOOK 436 PAGE 02
 SHEET 1 OF 2

MAPPED FOR ASSESSMENT PURPOSES ONLY



 PROPOSED REDEVELOPMENT BOUNDARY
 PROPOSED AMENDMENTS TO THE SURVEY AREA

MAP 2

CHANGES	
BLK	NEW/REV CUT
1	15,377
2	15,377
3	15,377
4	15,377
5	15,377
6	15,377
7	15,377
8	15,377
9	15,377
10	15,377
11	15,377
12	15,377
13	15,377
14	15,377
15	15,377
16	15,377
17	15,377
18	15,377
19	15,377
20	15,377
21	15,377
22	15,377
23	15,377
24	15,377
25	15,377
26	15,377
27	15,377
28	15,377
29	15,377
30	15,377
31	15,377
32	15,377
33	15,377
34	15,377
35	15,377
36	15,377
37	15,377
38	15,377
39	15,377
40	15,377
41	15,377
42	15,377
43	15,377
44	15,377
45	15,377
46	15,377
47	15,377
48	15,377
49	15,377
50	15,377
51	15,377
52	15,377
53	15,377
54	15,377
55	15,377
56	15,377
57	15,377
58	15,377
59	15,377
60	15,377
61	15,377
62	15,377
63	15,377
64	15,377
65	15,377
66	15,377
67	15,377
68	15,377
69	15,377
70	15,377
71	15,377
72	15,377
73	15,377
74	15,377
75	15,377
76	15,377
77	15,377
78	15,377
79	15,377
80	15,377
81	15,377
82	15,377
83	15,377
84	15,377
85	15,377
86	15,377
87	15,377
88	15,377
89	15,377
90	15,377
91	15,377
92	15,377
93	15,377
94	15,377
95	15,377
96	15,377
97	15,377
98	15,377
99	15,377
100	15,377

436-02
 SHIT 1 OF 2

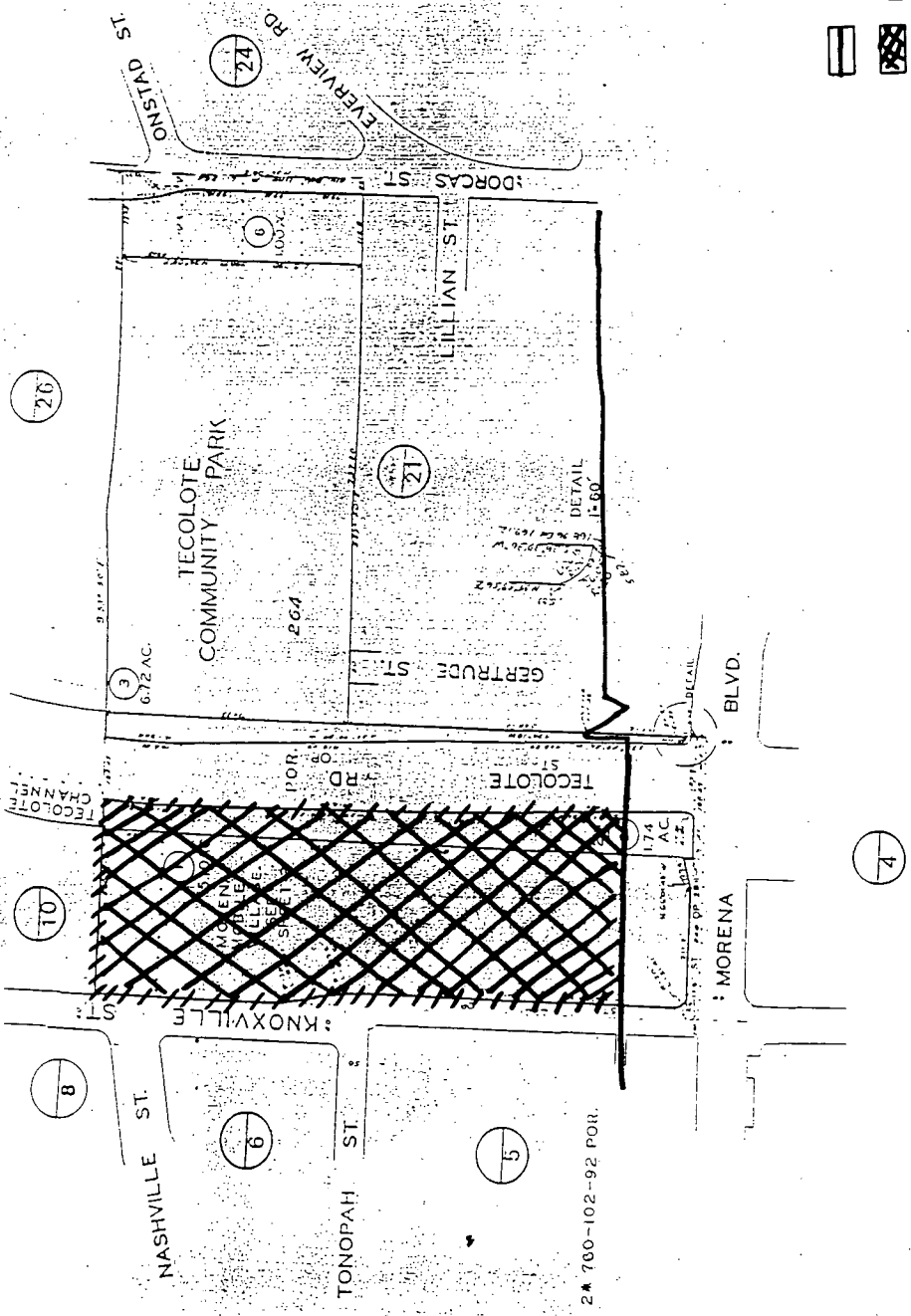
1"=100'

MAP 3

436-09
SHEET 1 OF 2

2-28-84

CHANGES	
BLK OLD	NEW/RT CUT
8	9/10 76 1870
8	10/10 76 1870
8	11/10 76 1870
8	12/10 76 1870
8	13/10 76 1870
8	14/10 76 1870
8	15/10 76 1870
8	16/10 76 1870
8	17/10 76 1870
8	18/10 76 1870
8	19/10 76 1870
8	20/10 76 1870
8	21/10 76 1870
8	22/10 76 1870
8	23/10 76 1870
8	24/10 76 1870
8	25/10 76 1870
8	26/10 76 1870
8	27/10 76 1870
8	28/10 76 1870
8	29/10 76 1870
8	30/10 76 1870
8	31/10 76 1870
8	32/10 76 1870
8	33/10 76 1870
8	34/10 76 1870
8	35/10 76 1870
8	36/10 76 1870
8	37/10 76 1870
8	38/10 76 1870
8	39/10 76 1870
8	40/10 76 1870
8	41/10 76 1870
8	42/10 76 1870
8	43/10 76 1870
8	44/10 76 1870
8	45/10 76 1870
8	46/10 76 1870
8	47/10 76 1870
8	48/10 76 1870
8	49/10 76 1870
8	50/10 76 1870
8	51/10 76 1870
8	52/10 76 1870
8	53/10 76 1870
8	54/10 76 1870
8	55/10 76 1870
8	56/10 76 1870
8	57/10 76 1870
8	58/10 76 1870
8	59/10 76 1870
8	60/10 76 1870



- PROPOSED REDEVELOPMENT BOUNDARY
- PROPOSED AMENDMENTS TO THE SURVEY ARE

8

R-289083

SAN DIEGO COUNTY
ASSESSOR'S MAP
BOOK 436 PAGE 09

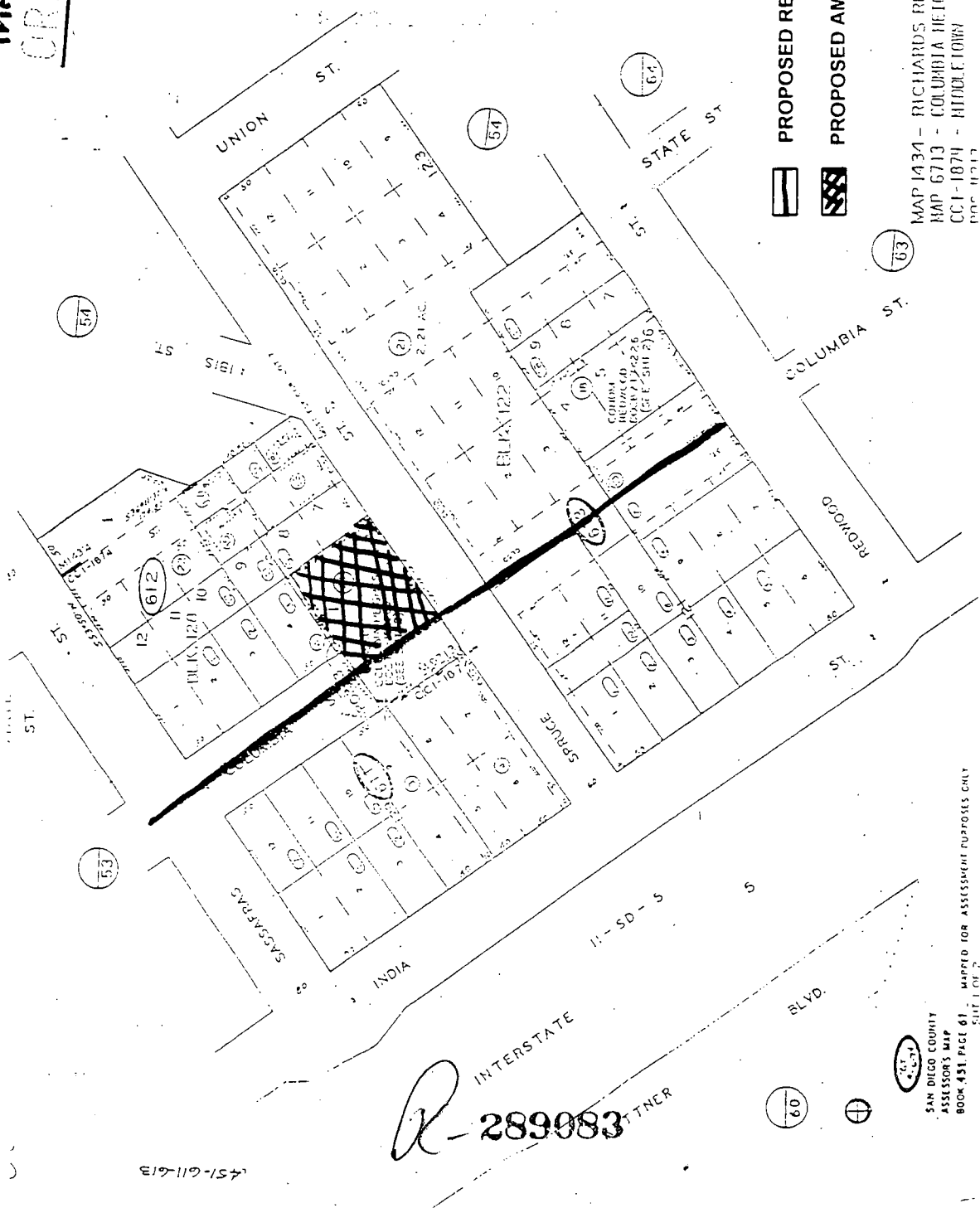
MAILED FOR ASSESSOR'S OFFICE

MAP 4
ORIGINAL

451-61
SHT. 1 OF 2
1" = 100'
⊕

8-26-87 *RWP*

CHANGES	
BLK OLD NEW (ACRUI)	
1-2 1430 21 11 35.0	
1-3 187	
1-4 20	
1-5 113 21 23 27.5	
2-12 107 22 27 20.5	
6-3 75 20 20 5.9	



 PROPOSED REDEVELOPMENT BOUNDARY
 PROPOSED AMENDMENTS TO THE SURVEY AREA

MAP 1434 - RICHARDS RESUB.
 MAP 6713 - COLUMBIA HEIGHTS
 CC 1-1874 - MIDDLE TOWN
 MAP 4713

R-289083 TANNER

451-61
 SAN DIEGO COUNTY
 ASSESSOR'S MAP
 BOOK 451, PAGE 61, MAPPED FOR ASSESSMENT PURPOSES ONLY
 SHEET 1 OF 2

451-611-613