

RESOLUTION NUMBER R- 289411

ADOPTED ON NOV 18 1997

WHEREAS, Section 8330 et seq. of the California Streets and Highways Code provides a procedure for the summary vacation of a general utility easement and an unnamed easement for public utility purposes by City Council resolution where the easements are no longer required; and

WHEREAS, the affected property owner has requested the vacation of the general utility easement and an unnamed easement for public utility purposes in Parcels 1, 2 and 3 of Parcel Map No. 14447 to unencumber this property and facilitate development of the site; and

WHEREAS, the City Council finds that:

- (a) there is no present or prospective use for the general utility easement and unnamed esement for public utility purposes either for the public service easement system or for any other public use of a like nature; and
- (b) the public will benefit from the vacation through improved utilization of land; and
- (c) the vacation is not inconsistent with the General Plan or an approved Community Plan; and
- (d) the public service easement system for which the easements were originally

acquired will not be detrimentally affected by this vacation; NOW, THEREFORE,

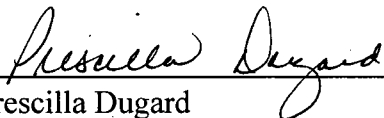
BE IT RESOLVED, by the Council of The City of San Diego, as follows:

1. That the general utility easement and unnamed easement for public utility purposes located in portions of Parcels 1, 2 and 3 of Parcel Map No. 14447, as more particularly shown on

Drawing No. 18675-B on File in the office of the City Clerk as Document No. RR- 289411-(

which is by this reference incorporated herein and made a part hereof, be and the same is hereby
ordered vacated.

APPROVED: CASEY GWINN, City Attorney

By 
Prescilla Dugard
Deputy City Attorney

PD:cdk
10/22/97
Or.Dept:Dev.Svcs.
WO:120101
Dwg:18675-B
R-98-486
Form=sumv.frm

DOCUMENT NO. **R-289411-1**

FILED **NOV 18 1997**

OFFICE OF THE CITY CLERK
SAN DIEGO, CALIFORNIA

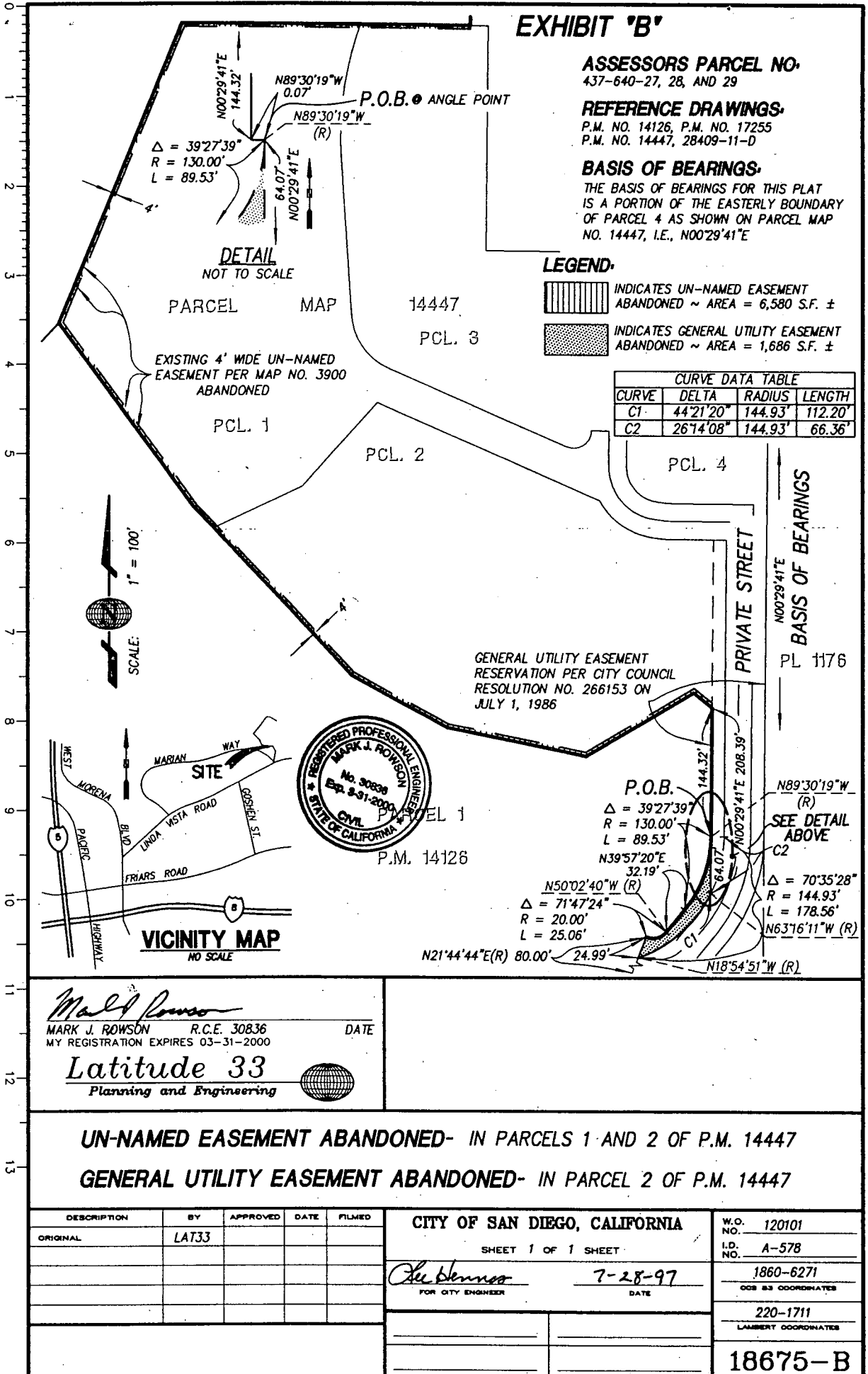



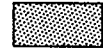
EXHIBIT 'B'

ASSESSORS PARCEL NO.
437-640-27, 28, AND 29

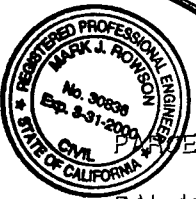
REFERENCE DRAWINGS:
P.M. NO. 14126, P.M. NO. 17255
P.M. NO. 14447, 28409-11-D

BASIS OF BEARINGS:
THE BASIS OF BEARINGS FOR THIS PLAT IS A PORTION OF THE EASTERLY BOUNDARY OF PARCEL 4 AS SHOWN ON PARCEL MAP NO. 14447, I.E., N00°29'41"E

LEGEND:

-  INDICATES UN-NAMED EASEMENT ABANDONED ~ AREA = 6,580 S.F. ±
-  INDICATES GENERAL UTILITY EASEMENT ABANDONED ~ AREA = 1,686 S.F. ±

CURVE DATA TABLE			
CURVE	DELTA	RADIUS	LENGTH
C1	44°21'20"	144.93'	112.20'
C2	26°14'08"	144.93'	66.36'



Mark J. Rowson
MARK J. ROWSON R.C.E. 30836 DATE
 MY REGISTRATION EXPIRES 03-31-2000
Latitude 33
 Planning and Engineering

UN-NAMED EASEMENT ABANDONED- IN PARCELS 1 AND 2 OF P.M. 14447
GENERAL UTILITY EASEMENT ABANDONED- IN PARCEL 2 OF P.M. 14447

DESCRIPTION	BY	APPROVED	DATE	FILED	CITY OF SAN DIEGO, CALIFORNIA		W.O. NO.
ORIGINAL	LAT33				SHEET 1 OF 1 SHEET		120101
					<i>He Blenno</i>	7-28-97	I.D. NO. A-578
					FOR CITY ENGINEER	DATE	1860-6271
							008 83 COORDINATES
							220-1711
							LAMBERT COORDINATES
							18675-B

R-289411

243ESM02.DWG