

(R-98-568)

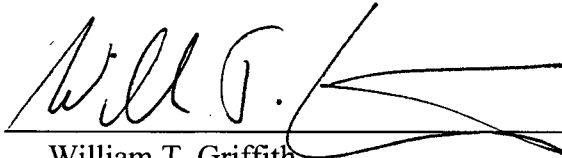
RESOLUTION NUMBER R- 289525

ADOPTED ON DEC 09 1997

BE IT RESOLVED, by the Council of The City of San Diego, that portions of Boundary Tract, Map 1690; portions of Schultz Addition to San Ysidro, Map 1758; and portions of Addition No. 1 to San Ysidro, Map 1194 be and are hereby dedicated for street purposes, as shown on City of San Diego Drawing Nos. 26606-1D and 26606-2D attached hereto, and the same is named Border Village Road.

BE IT FURTHER RESOLVED, that the City Clerk is hereby authorized and directed to cause a certified copy of this resolution, with the legal descriptions and the drawings, attested by him under seal, to be recorded in the office of the County Recorder at no fee for the benefit of the City, with no documentary tax due.

APPROVED: CASEY GWINN, City Attorney

By   
William T. Griffith  
Deputy City Attorney

WTG:cdk  
11/07/97  
Or.Dept:REA  
R-98-568

**PARCELS AFFECTED BY ACQUISITION**

PARCEL	APN	DESCRIPTION	ACQUISITION	RECORDING
1	666-120-01	PORTION OF MAP OF BOUNDARY TRACT	15-13-1988	REC'D 15-13-1988
2	666-120-03	PORTION OF MAP OF BOUNDARY TRACT	15-13-1988	REC'D 15-13-1988
3	666-120-04	PORTION OF MAP OF BOUNDARY TRACT	15-13-1988	REC'D 15-13-1988
4	666-110-11	PORTION OF LOTS 13 & 14 SCHOOL ADDITION TO SAN YSIDRO MAP NO. 1758	15-13-1988	REC'D 15-13-1988

**EXEMPT SHOWN BELOW ARE NON-SPECIFIC AND CANNOT BE PLOTTED HEREON**

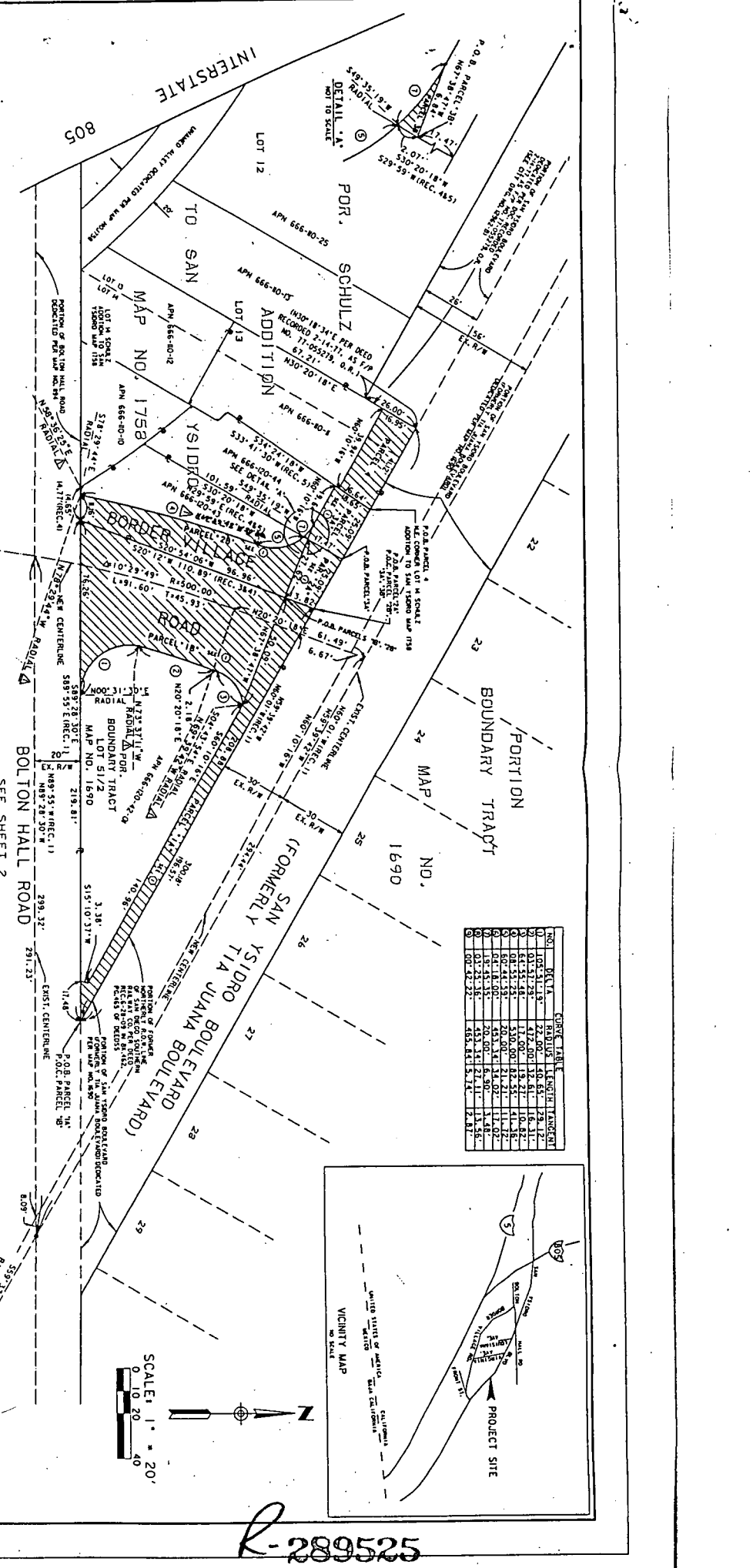
PARCEL	DESCRIPTION
1	PORTION OF MAP NO. 1758
2	PORTION OF MAP NO. 1758
3	PORTION OF MAP NO. 1758
4	PORTION OF MAP NO. 1758

**LEGEND**

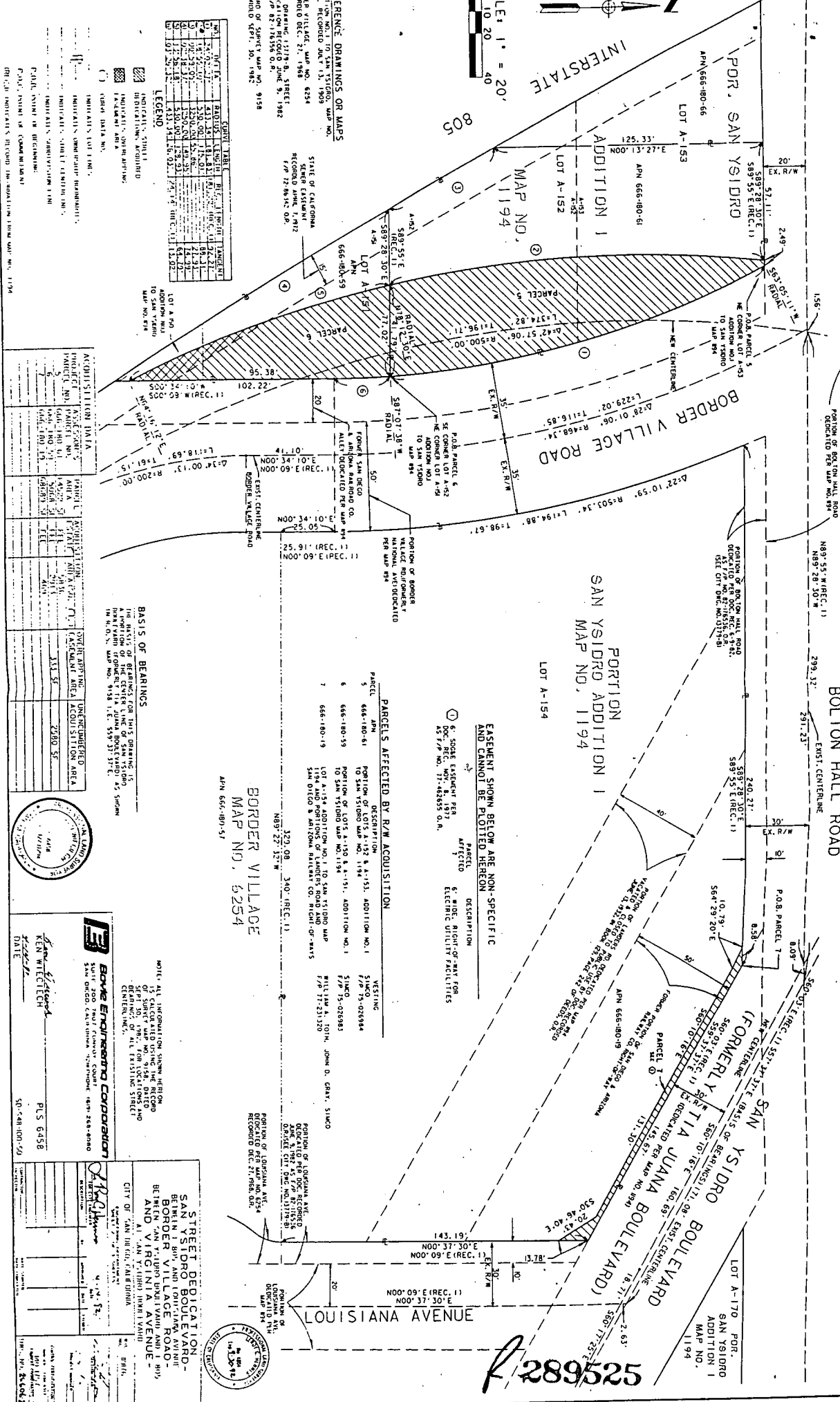
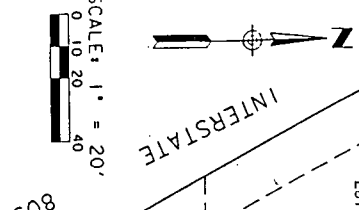
- INDICATES STREET DEDICATIONS
- INDICATES LOT LINES
- INDICATES STREET CENTERLINES
- P.O.C. POINT OF COMMENCEMENT
- INDICATES RECORD INFORMATION FROM MAP NO. 1690
- INDICATES RECORD INFORMATION FROM MAP NO. 1758
- INDICATES RECORD INFORMATION FROM DEED 177-13-25-0408
- INDICATES RECORD INFORMATION FROM DEED 177-13-25-0888
- INDICATES RECORD INFORMATION FROM DEED 177-83-208511

**ACQUISITION DATA**

PROJECT	ASSESSOR'S	AREA	ESTIMATE	TOTAL	UNRECORDED
1	666-120-01	1.413	410	322	89
2	666-120-03	1.167	348	279	69
3	666-120-04	1.167	348	279	69
4	666-110-11	1.167	348	279	69
5	666-110-11	1.167	348	279	69
6	666-110-11	1.167	348	279	69
7	666-110-11	1.167	348	279	69
8	666-110-11	1.167	348	279	69
9	666-110-11	1.167	348	279	69
10	666-110-11	1.167	348	279	69
11	666-110-11	1.167	348	279	69
12	666-110-11	1.167	348	279	69
13	666-110-11	1.167	348	279	69
14	666-110-11	1.167	348	279	69
15	666-110-11	1.167	348	279	69
16	666-110-11	1.167	348	279	69
17	666-110-11	1.167	348	279	69
18	666-110-11	1.167	348	279	69
19	666-110-11	1.167	348	279	69
20	666-110-11	1.167	348	279	69
21	666-110-11	1.167	348	279	69
22	666-110-11	1.167	348	279	69
23	666-110-11	1.167	348	279	69
24	666-110-11	1.167	348	279	69
25	666-110-11	1.167	348	279	69
26	666-110-11	1.167	348	279	69
27	666-110-11	1.167	348	279	69
28	666-110-11	1.167	348	279	69
29	666-110-11	1.167	348	279	69
30	666-110-11	1.167	348	279	69
31	666-110-11	1.167	348	279	69
32	666-110-11	1.167	348	279	69
33	666-110-11	1.167	348	279	69
34	666-110-11	1.167	348	279	69
35	666-110-11	1.167	348	279	69
36	666-110-11	1.167	348	279	69
37	666-110-11	1.167	348	279	69
38	666-110-11	1.167	348	279	69
39	666-110-11	1.167	348	279	69
40	666-110-11	1.167	348	279	69
41	666-110-11	1.167	348	279	69
42	666-110-11	1.167	348	279	69
43	666-110-11	1.167	348	279	69
44	666-110-11	1.167	348	279	69
45	666-110-11	1.167	348	279	69
46	666-110-11	1.167	348	279	69
47	666-110-11	1.167	348	279	69
48	666-110-11	1.167	348	279	69
49	666-110-11	1.167	348	279	69
50	666-110-11	1.167	348	279	69



R-289525



REFERENCE DRAWINGS OR MAPS  
 ADDITION NO. 1 TO SAN YSIDRO MAP NO. 1194 RECORDED JULY 13, 1968  
 BORDER VILLAGE MAP NO. 6254  
 BORDER VILLAGE MAP NO. 6254  
 STATE OF CALIFORNIA  
 RECORD MAP NO. 1712  
 F/P 12-96-01-02  
 CITY ORDERING 12778 B STREET  
 CITY OF SAN YSIDRO  
 MAP NO. 1194  
 RECORD MAP NO. 6254  
 F/P 12-96-01-02

GENERAL TABLE

NO.	DATE	REVISION	BY	REASON
1	10/27/94	1	JES	INITIAL PLAN
2	11/22/94	2	JES	REVISIONS
3	12/15/94	3	JES	REVISIONS
4	12/22/94	4	JES	REVISIONS
5	1/10/95	5	JES	REVISIONS
6	1/17/95	6	JES	REVISIONS
7	1/24/95	7	JES	REVISIONS
8	2/1/95	8	JES	REVISIONS
9	2/8/95	9	JES	REVISIONS
10	2/15/95	10	JES	REVISIONS
11	2/22/95	11	JES	REVISIONS
12	2/29/95	12	JES	REVISIONS
13	3/6/95	13	JES	REVISIONS
14	3/13/95	14	JES	REVISIONS
15	3/20/95	15	JES	REVISIONS
16	3/27/95	16	JES	REVISIONS
17	4/3/95	17	JES	REVISIONS
18	4/10/95	18	JES	REVISIONS
19	4/17/95	19	JES	REVISIONS
20	4/24/95	20	JES	REVISIONS
21	5/1/95	21	JES	REVISIONS
22	5/8/95	22	JES	REVISIONS
23	5/15/95	23	JES	REVISIONS
24	5/22/95	24	JES	REVISIONS
25	5/29/95	25	JES	REVISIONS
26	6/5/95	26	JES	REVISIONS
27	6/12/95	27	JES	REVISIONS
28	6/19/95	28	JES	REVISIONS
29	6/26/95	29	JES	REVISIONS
30	7/3/95	30	JES	REVISIONS
31	7/10/95	31	JES	REVISIONS
32	7/17/95	32	JES	REVISIONS
33	7/24/95	33	JES	REVISIONS
34	7/31/95	34	JES	REVISIONS
35	8/7/95	35	JES	REVISIONS
36	8/14/95	36	JES	REVISIONS
37	8/21/95	37	JES	REVISIONS
38	8/28/95	38	JES	REVISIONS
39	9/4/95	39	JES	REVISIONS
40	9/11/95	40	JES	REVISIONS
41	9/18/95	41	JES	REVISIONS
42	9/25/95	42	JES	REVISIONS
43	10/2/95	43	JES	REVISIONS
44	10/9/95	44	JES	REVISIONS
45	10/16/95	45	JES	REVISIONS
46	10/23/95	46	JES	REVISIONS
47	10/30/95	47	JES	REVISIONS
48	11/6/95	48	JES	REVISIONS
49	11/13/95	49	JES	REVISIONS
50	11/20/95	50	JES	REVISIONS
51	11/27/95	51	JES	REVISIONS
52	12/4/95	52	JES	REVISIONS
53	12/11/95	53	JES	REVISIONS
54	12/18/95	54	JES	REVISIONS
55	12/25/95	55	JES	REVISIONS
56	1/1/96	56	JES	REVISIONS
57	1/8/96	57	JES	REVISIONS
58	1/15/96	58	JES	REVISIONS
59	1/22/96	59	JES	REVISIONS
60	1/29/96	60	JES	REVISIONS
61	2/5/96	61	JES	REVISIONS
62	2/12/96	62	JES	REVISIONS
63	2/19/96	63	JES	REVISIONS
64	2/26/96	64	JES	REVISIONS
65	3/5/96	65	JES	REVISIONS
66	3/12/96	66	JES	REVISIONS
67	3/19/96	67	JES	REVISIONS
68	3/26/96	68	JES	REVISIONS
69	4/2/96	69	JES	REVISIONS
70	4/9/96	70	JES	REVISIONS
71	4/16/96	71	JES	REVISIONS
72	4/23/96	72	JES	REVISIONS
73	4/30/96	73	JES	REVISIONS
74	5/7/96	74	JES	REVISIONS
75	5/14/96	75	JES	REVISIONS
76	5/21/96	76	JES	REVISIONS
77	5/28/96	77	JES	REVISIONS
78	6/4/96	78	JES	REVISIONS
79	6/11/96	79	JES	REVISIONS
80	6/18/96	80	JES	REVISIONS
81	6/25/96	81	JES	REVISIONS
82	7/2/96	82	JES	REVISIONS
83	7/9/96	83	JES	REVISIONS
84	7/16/96	84	JES	REVISIONS
85	7/23/96	85	JES	REVISIONS
86	7/30/96	86	JES	REVISIONS
87	8/6/96	87	JES	REVISIONS
88	8/13/96	88	JES	REVISIONS
89	8/20/96	89	JES	REVISIONS
90	8/27/96	90	JES	REVISIONS
91	9/3/96	91	JES	REVISIONS
92	9/10/96	92	JES	REVISIONS
93	9/17/96	93	JES	REVISIONS
94	9/24/96	94	JES	REVISIONS
95	10/1/96	95	JES	REVISIONS
96	10/8/96	96	JES	REVISIONS
97	10/15/96	97	JES	REVISIONS
98	10/22/96	98	JES	REVISIONS
99	10/29/96	99	JES	REVISIONS
100	11/5/96	100	JES	REVISIONS
101	11/12/96	101	JES	REVISIONS
102	11/19/96	102	JES	REVISIONS
103	11/26/96	103	JES	REVISIONS
104	12/3/96	104	JES	REVISIONS
105	12/10/96	105	JES	REVISIONS
106	12/17/96	106	JES	REVISIONS
107	12/24/96	107	JES	REVISIONS
108	1/7/97	108	JES	REVISIONS
109	1/14/97	109	JES	REVISIONS
110	1/21/97	110	JES	REVISIONS
111	1/28/97	111	JES	REVISIONS
112	2/4/97	112	JES	REVISIONS
113	2/11/97	113	JES	REVISIONS
114	2/18/97	114	JES	REVISIONS
115	2/25/97	115	JES	REVISIONS
116	3/4/97	116	JES	REVISIONS
117	3/11/97	117	JES	REVISIONS
118	3/18/97	118	JES	REVISIONS
119	3/25/97	119	JES	REVISIONS
120	4/1/97	120	JES	REVISIONS
121	4/8/97	121	JES	REVISIONS
122	4/15/97	122	JES	REVISIONS
123	4/22/97	123	JES	REVISIONS
124	4/29/97	124	JES	REVISIONS
125	5/6/97	125	JES	REVISIONS
126	5/13/97	126	JES	REVISIONS
127	5/20/97	127	JES	REVISIONS
128	5/27/97	128	JES	REVISIONS
129	6/3/97	129	JES	REVISIONS
130	6/10/97	130	JES	REVISIONS
131	6/17/97	131	JES	REVISIONS
132	6/24/97	132	JES	REVISIONS
133	7/1/97	133	JES	REVISIONS
134	7/8/97	134	JES	REVISIONS
135	7/15/97	135	JES	REVISIONS
136	7/22/97	136	JES	REVISIONS
137	7/29/97	137	JES	REVISIONS
138	8/5/97	138	JES	REVISIONS
139	8/12/97	139	JES	REVISIONS
140	8/19/97	140	JES	REVISIONS
141	8/26/97	141	JES	REVISIONS
142	9/2/97	142	JES	REVISIONS
143	9/9/97	143	JES	REVISIONS
144	9/16/97	144	JES	REVISIONS
145	9/23/97	145	JES	REVISIONS
146	9/30/97	146	JES	REVISIONS
147	10/7/97	147	JES	REVISIONS
148	10/14/97	148	JES	REVISIONS
149	10/21/97	149	JES	REVISIONS
150	10/28/97	150	JES	REVISIONS
151	11/4/97	151	JES	REVISIONS
152	11/11/97	152	JES	REVISIONS
153	11/18/97	153	JES	REVISIONS
154	11/25/97	154	JES	REVISIONS
155	12/2/97	155	JES	REVISIONS
156	12/9/97	156	JES	REVISIONS
157	12/16/97	157	JES	REVISIONS
158	12/23/97	158	JES	REVISIONS
159	12/30/97	159	JES	REVISIONS
160	1/6/98	160	JES	REVISIONS
161	1/13/98	161	JES	REVISIONS
162	1/20/98	162	JES	REVISIONS
163	1/27/98	163	JES	REVISIONS
164	2/3/98	164	JES	REVISIONS
165	2/10/98	165	JES	REVISIONS
166	2/17/98	166	JES	REVISIONS
167	2/24/98	167	JES	REVISIONS
168	3/2/98	168	JES	REVISIONS
169	3/9/98	169	JES	REVISIONS
170	3/16/98	170	JES	REVISIONS
171	3/23/98	171	JES	REVISIONS
172	3/30/98	172	JES	REVISIONS
173	4/6/98	173	JES	REVISIONS
174	4/13/98	174	JES	REVISIONS
175	4/20/98	175	JES	REVISIONS
176	4/27/98	176	JES	REVISIONS
177	5/4/98	177	JES	REVISIONS
178	5/11/98	178	JES	REVISIONS
179	5/18/98	179	JES	REVISIONS
180	5/25/98	180	JES	REVISIONS
181	6/1/98	181	JES	REVISIONS
182	6/8/98	182	JES	REVISIONS
183	6/15/98	183	JES	REVISIONS
184	6/22/98	184	JES	REVISIONS
185	6/29/98	185	JES	REVISIONS
186	7/6/98	186	JES	REVISIONS
187	7/13/98	187	JES	REVISIONS
188	7/20/98	188	JES	REVISIONS
189	7/27/98	189	JES	REVISIONS
190	8/3/98	190	JES	REVISIONS
191	8/10/98	191	JES	REVISIONS
192	8/17/98	192	JES	REVISIONS
193	8/24/98	193	JES	REVISIONS
194	8/31/98	194	JES	REVISIONS
195	9/7/98	195	JES	REVISIONS
196	9/14/98	196	JES	REVISIONS
197	9/21/98	197	JES	REVISIONS
198	9/28/98	198	JES	REVISIONS
199	10/5/98	199	JES	REVISIONS
200	10/12/98	200	JES	REVISIONS
201	10/19/98	201	JES	REVISIONS
202	10/26/98	202	JES	REVISIONS
203	11/2/98	203	JES	REVISIONS
204	11/9/98	204	JES	REVISIONS
205	11/16/98	205	JES	REVISIONS
206	11/23/98	206	JES	REVISIONS
207	11/30/98	207	JES	REVISIONS
208	12/7/98	208	JES	REVISIONS
209	12/14/98	209	JES	REVISIONS
210	12/21/98	210	JES	REVISIONS
211	12/28/98	211	JES	REVISIONS
212	1/4/99	212	JES	REVISIONS
213	1/11/99	213	JES	REVISIONS
214	1/18/99	214	JES	REVISIONS
215	1/25/99	215	JES	REVISIONS
216	2/1/99	216	JES	REVISIONS
217	2/8/99	217	JES	REVISIONS
218	2/15/99	218	JES	REVISIONS
219	2/22/99	219	JES	REVISIONS
220	2/29/99	220	JES	REVISIONS
221	3/6/99	221	JES	REVISIONS
222	3/13/99	222	JES	REVISIONS
223	3/20/99	223	JES	REVISIONS
224				