

(R-98-1061)

RESOLUTION NUMBER R- 289948

ADOPTED ON APR 2 0 1998

BE IT RESOLVED, by the Council of The City of San Diego, that the City Manager is authorized to accept an easement for public street purposes, being a portion of Parcel 1 of Parcel Map No. 15134, as shown on Drawing No. 18528-B(1-4) as attached Exhibit "B", per Grant Deed to The City of San Diego dated October 30, 1997, is dedicated as and for a public street, and is named Ocean View Hills Parkway.

BE IT FURTHER RESOLVED, that the City Clerk shall cause the deed and a certified copy of this resolution, attested by him under seal, to be recorded in the office of the County Recorder at no fee for the benefit of the City, with no documentary tax due.

APPROVED: CASEY GWINN, City Attorney

By Prescilla Dugard
Prescilla Dugard
Deputy City Attorney

PD:cdk
03/31/98
Or.Dept:Dev.Svcs.
WO.960611
R-98-1061
Form=deedrr.frm

BASIS OF BEARINGS

EXHIBIT 'B'

THE BASIS OF BEARINGS FOR THIS DRAWING IS THE NAD 83, ZONE 6, GRID BEARING BETWEEN STATION "GAS 1964" AND STATION "GAY 1964" PER R.O.S. 14492. I.E. N 117°26' E

THE COMBINED SCALE FACTOR AT STATION "GAS 1964" IS 1.000020725

GRID DISTANCE = GROUND DISTANCE X COMBINED SCALE FACTOR

QUOTED BEARINGS FROM REFERENCE MAPS/DEEDS MAY OR MAY NOT BE IN TERMS OF SAID SYSTEM.

ASSESSOR'S PARCEL NO.

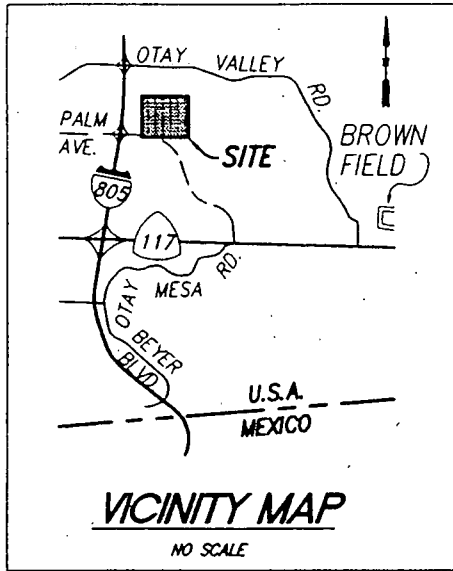
644-010-06

REFERENCE DRAWINGS

28458-D, R.O.S. 10518

NOTES

TOTAL AREA OF PARCEL 1 & 2 OF P.M. 15134 = 244.818 ACRES



LEGEND

- INDICATES STREET DEDICATION - OCEAN VIEW HILLS PARKWAY PARCEL 'A' - AREA= 0.922 ACRES
- INDICATES DRAINAGE EASEMENT ACQUIRED PARCEL 'B' - AREA= 3,934 SQ. FT.

- () INDICATES RECORD DATA FROM P.M. 15134
- (R) INDICATES RADIAL BEARING
- (A) 6' WIDE S.D. CONSOLIDATED G. & E. CO. NOW VESTING WITH S.D.G. & E., EASEMENT RECORDED 11-20-1928 AS DOCUMENT NO. 70566 IN BOOK 1561, PAGE 8 OF DEEDS
- (B) 25' WIDE WATER EASEMENT TO CALIFORNIA WATER AND TELEPHONE COMPANY NOW VESTING WITH THE CITY OF SAN DIEGO, RECORDED 9-22-1952 DOCUMENT NO. 118843 IN BOOK 4600 PAGE 341 OF OFFICIAL RECORDS.
- (C) 6' WIDE WATER EASEMENT RECORDED 3-10-1953 AS DOC. NO. 32382 IN BOOK 4778, PAGE 307 AND RECORDED 3-11-1982 AS FILE/PAGE NO. 82-066756, BOOK 1982 AND RECORDED 7-16-1982 AS FILE/PAGE NO. 82-218218, BOOK 1982, ALL OF OFFICIAL RECORDS.
- (D) 16' WIDE S.D.G. & E. EASEMENT RECORDED 9-24-1954 DOCUMENT NO. 127523 IN BOOK 5374, PAGE 490, OFFICIAL RECORDS.

- (E) 20' WIDE S.D.G. & E. EASEMENT RECORDED 2-1-1962 AS FILE/PAGE NO. 18845, SERIES 3, BOOK 1962, OF OFFICIAL RECORDS.
- (F) 20' WIDE WATER EASEMENT TO OTAY MUNICIPAL WATER DISTRICT RECORDED 2-20-1975 AS FILE/PAGE NO. 75-038986, BOOK 1975, OFFICIAL RECORDS.
- (G) 20' WIDE SEWER EASEMENT TO THE CITY OF SAN DIEGO RECORDED 10-16-1986 AS FILE/PAGE 86-467860, O.R.
- (H) 6' WIDE EASEMENT TO PACIFIC BELL RECORDED 1-19-1993 AS DOCUMENT NO. 1993-0029956 OF OFFICIAL RECORDS.
- 1 INDICATES A PORTION OF OCEAN VIEW HILLS PARKWAY TO BE DEDICATED BY FINAL MAP AS SHOWN ON TM 86-1032
- 2 INDICATES A PORTION OF STREET DEDICATED. (SEE CITY DWG. NO. 18568-B)

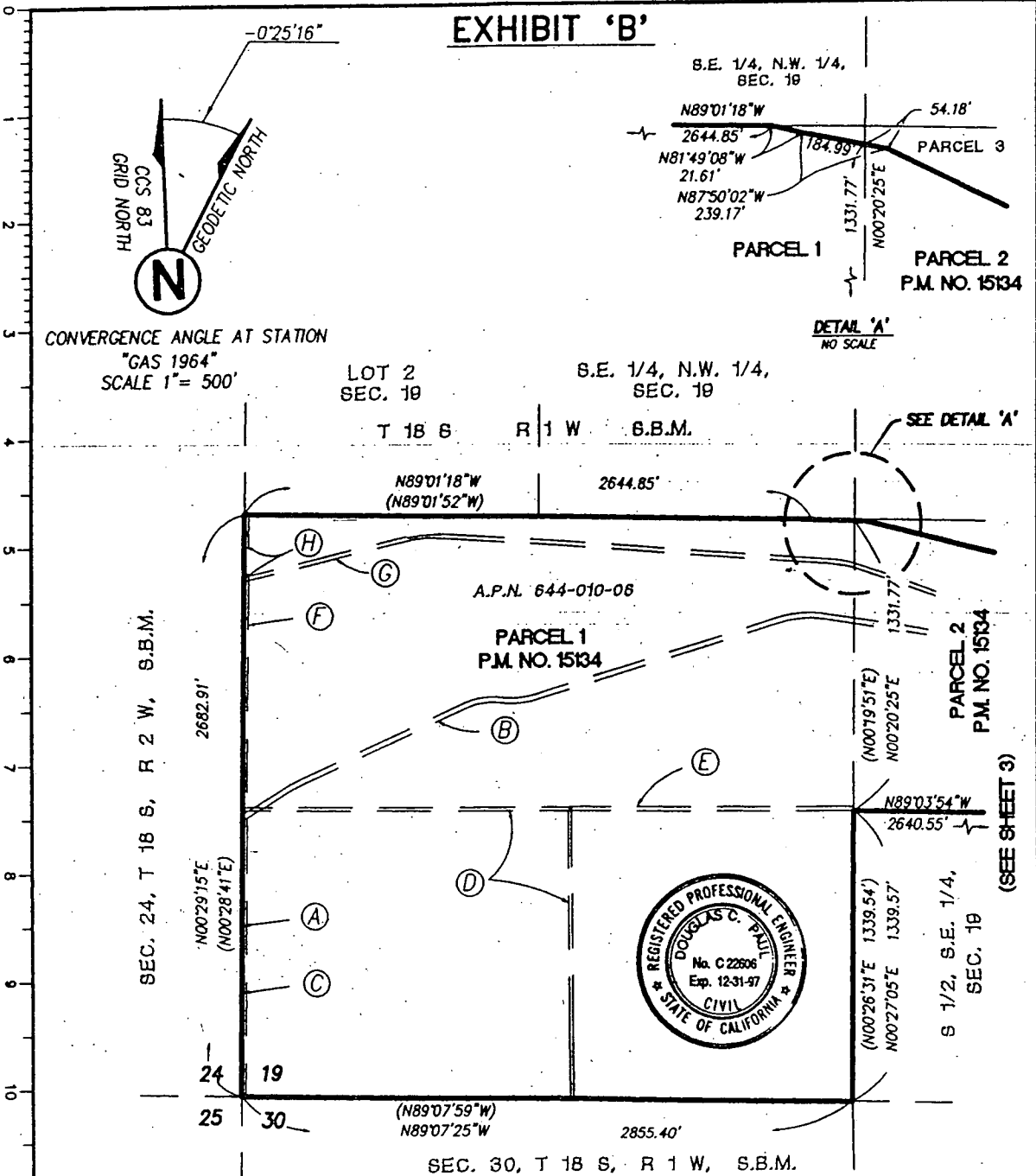
Project Design Consultants
 PLANNING ENGINEERING SURVEYING
 701 "B" Street, Suite 800, San Diego, Ca. 92101
 619-235-6472 FAX 234-0348

Douglas C. Paul 3/17/97
 DOUGLAS C. PAUL R.C.E. 22606 DATE
 MY REGISTRATION EXPIRES 12-31-97

DRAINAGE EASEMENT - IN PARCEL 1 OF PARCEL MAP NO. 15134
 &
STREET DEDICATION - OCEAN VIEW HILLS PARKWAY - EAST OF DENNERY ROAD

DESCRIPTION	BY	APPROVED	DATE	FILMED	CITY OF SAN DIEGO, CALIFORNIA	W.O. NO.
ORIGINAL	PDC				SHEET 1 OF 4 SHEETS	960611
					<i>DeBlanc</i> 4-1-97	TM 86-1032
					FOR CITY ENGINEER DATE	1794-6321
						OCB '83 COORDINATES
						154-1761
						LAMBERT COORDINATES
						18528-1-B

EXHIBIT 'B'



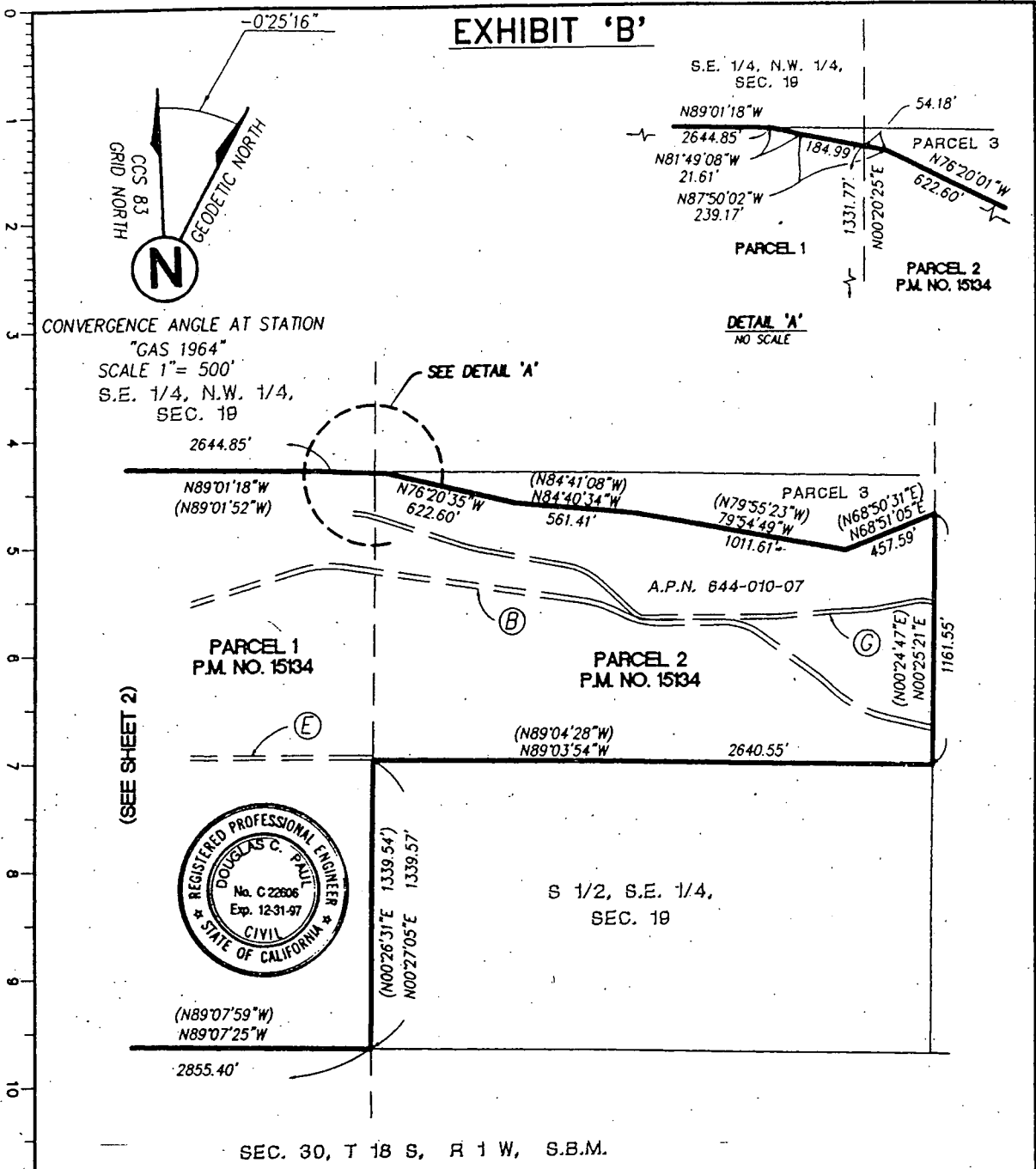
Project Design Consultants
 PLANNING ENGINEERING SURVEYING
 701 "B" Street, Suite 800, San Diego, Ca. 92101
 619-235-6471 FAX 234-0349

DCP 2/20/97
 DOUGLAS C. PAUL R.C.E. 22606 DATE
 MY REGISTRATION EXPIRES 12-31-97

DRAINAGE EASEMENT IN PARCEL 1 OF PARCEL MAP NO. 15134
 &
STREET DEDICATION - OCEAN VIEW HILLS PARKWAY - EAST OF DENNERY ROAD

DESCRIPTION	BY	APPROVED	DATE	FILED	CITY OF SAN DIEGO, CALIFORNIA SHEET 2 OF 4 SHEETS	W.O. NO.
ORIGINAL	PDC					960611
					4-1-97	TM 86-1032
						1794-6321
						CCS '83 COORDINATES
						154-1761
						LAMBERT COORDINATES
						18528-2-B

EXHIBIT 'B'



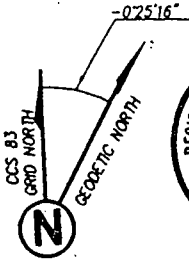
Project Design Consultants
 PLANNING ENGINEERING SURVEYING
 701 "B" Street, Suite 900, San Diego, Ca. 92101
 619-235-6471 FAX 234-0349

[Signature] 2/20/97
 DOUGLAS C. PAUL R.C.E. 22606 DATE
 MY REGISTRATION EXPIRES 12-31-97

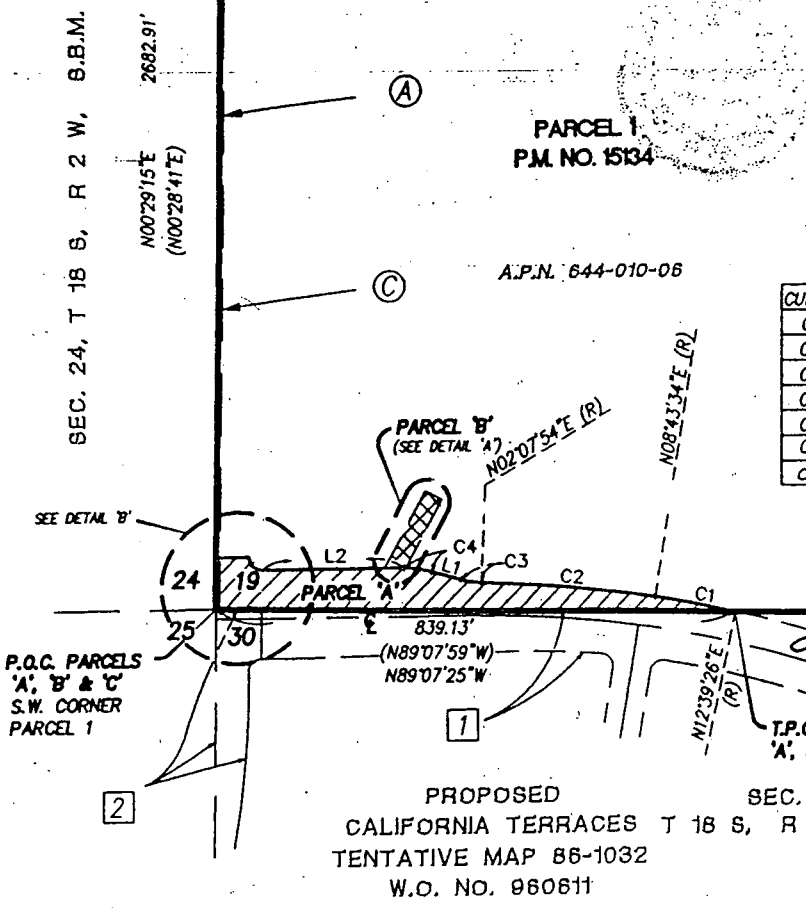
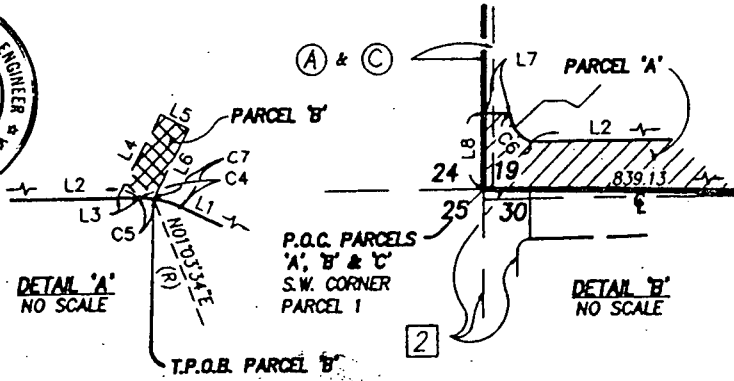
DRAINAGE EASEMENT - IN PARCEL 1 OF PARCEL MAP NO. 15134
 &
STREET DEDICATION - OCEAN VIEW HILLS PARKWAY - EAST OF DENNERY ROAD

DESCRIPTION	BY	APPROVED	DATE	FILED	CITY OF SAN DIEGO, CALIFORNIA	
ORIGINAL	PDC				SHEET 3 OF 4 SHEETS	
					<i>[Signature]</i>	W.O. NO. 960611
					4-1-97	TM 86-1032
					FOR CITY ENGINEER	1794-6321
						CCS '83 COORDINATES
						154-1761
						LAMBERT COORDINATES
						18528-3-B

EXHIBIT 'B'



CONVERGENCE ANGLE AT STATION
"GAS 1964"
SCALE 1" = 200'



LINE	BEARING	DISTANCE
L1	N73°42'01"W	48.23'
L2	N89°47'08"E	226.43'
L3	N89°47'08"E	30.43'
L4	N27°53'25"E	139.15'
L5	N62°06'35"W	30.00'
L6	N27°53'25"E	123.17'
L7	N89°30'45"W (R)	54.00'
L8	N02°29'15"E	83.91'

CURVE	DELTA	RADIUS	LENGTH
C1	03°55'52"	1949.00'	133.72'
C2	06°35'40"	2450.00'	281.98'
C3	14°10'05"	140.00'	34.62'
C4	16°30'51"	160.00'	46.12'
C5	01°16'26"	160.00'	3.56'
C6	90°42'02"	20.00'	31.66'
C7	15°14'25"	160.00'	42.56'

Project Design Consultants
 PLANNING ENGINEERING SURVEYING
 701 "B" Street, Suite 800, San Diego, Ca. 92101
 619-235-6471 FAX 234-0349

Douglas C. Paul 3/17/97
 DOUGLAS C. PAUL R.C.E. 22606 DATE
 MY REGISTRATION EXPIRES 12-31-97

DRAINAGE EASEMENT IN PARCEL 1 OF PARCEL MAP NO. 15134
 &
STREET DEDICATION - OCEAN VIEW HILLS PARKWAY - EAST OF DENNERY ROAD.

DESCRIPTION	BY	APPROVED	DATE	FILED	CITY OF SAN DIEGO, CALIFORNIA	W.O. NO.
ORIGINAL	PDC				SHEET 4 OF 4 SHEETS	960611
					<i>Suberna</i> 4-1-97	TM 86-1032
					FOR CITY ENGINEER DATE	1794-6321
						CCS '83 COORDINATES
						154-1761
						LAMBERT COORDINATES
						18528-4-B