

RESOLUTION NUMBER R- 290019

ADOPTED ON MAY 04 1998

WHEREAS, Section 8330 et seq. of the California Streets and Highways Code provides a procedure for the summary vacation of public service easements by City Council resolution where the easement is no longer required; and

WHEREAS, the abutting property owners have requested the vacation of a sewer easement in portions of Lots 4 and 5 of Carmel Mountain Ranch Unit No. 18 to facilitate development of their property; and

WHEREAS, the City Council finds that:

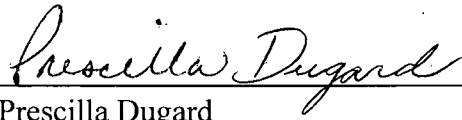
- (a) there is no present or prospective use for the sewer easement for public street purposes; and
- (b) the public will benefit from the vacation through improved utilization of land; and
- (c) the vacation is not inconsistent with the General Plan or an approved Community Plan; and
- (d) the sewer system for which the right-of-way was originally acquired will not be detrimentally affected by this vacation; NOW, THEREFORE,

BE IT RESOLVED, by the Council of The City of San Diego, as follows:

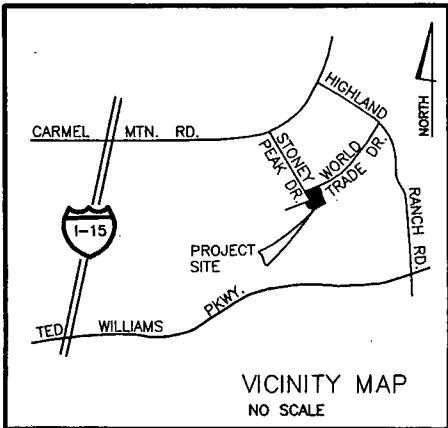
1. That the sewer easement in portions of Lots 4 and 5 of Carmel Mountain Ranch Unit No. 18, as more particularly shown on Drawing No. 18717-B attached hereto and made a part hereof, be and the same is ordered vacated.
2. That the City Clerk shall cause a certified copy of this resolution, attested by him

under seal, to be recorded in the office of the County Recorder.

APPROVED: CASEY GWINN, City Attorney

By 
Prescilla Dugard
Deputy City Attorney

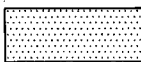
PD:cdk
04/13/98
Or.Dept:Dev.Svcs.
WO:920375
Dwg:18717-B
R-98-1124
Form=sumv.frm



BASIS OF BEARINGS

THE BASIS OF BEARINGS FOR THIS DRAWING IS A PORTION OF THE SOUTHEASTERLY LINE OF WORLD TRADE DRIVE, PER MAP NO. 13248 I.E. N45°49'09"E

LEGEND



INDICATES EXISTING SEWER EASEMENT PER MAP 13248- PARCELS "A" AND "B"-ABANDONED-SHOWN THUS

(R) INDICATES RADIAL BEARING.

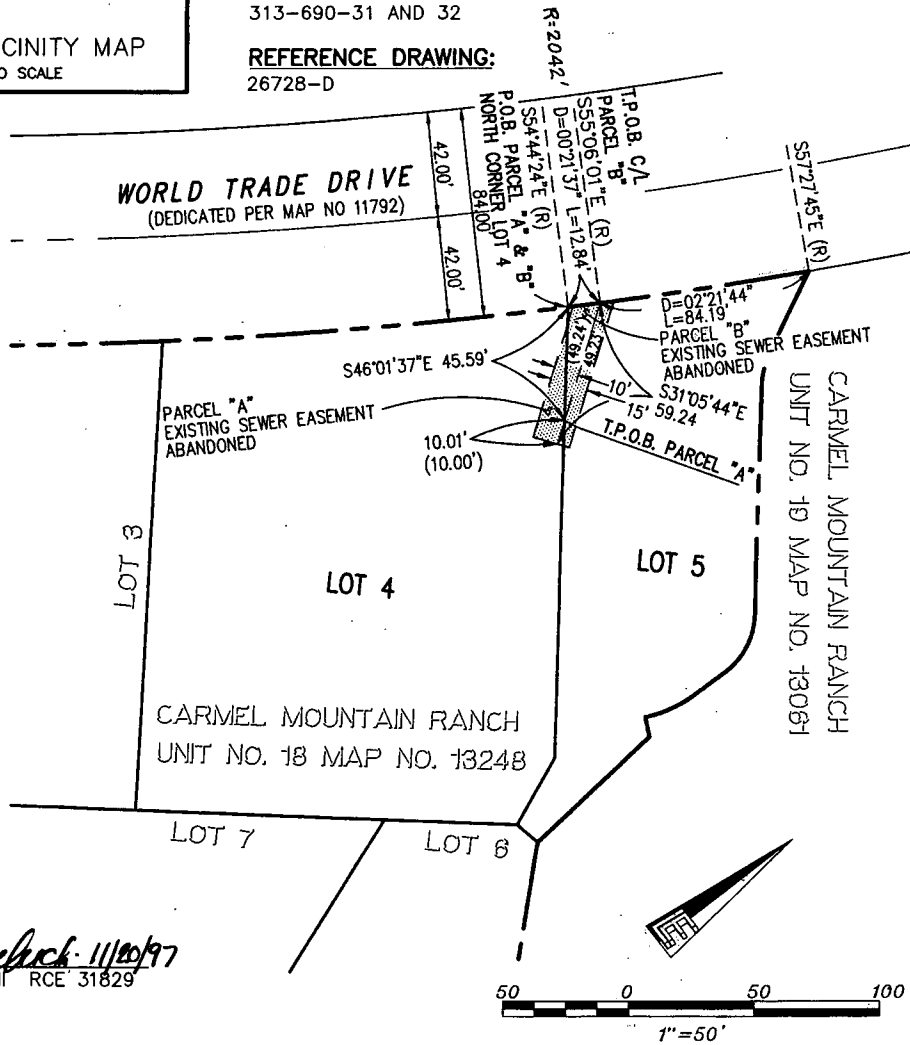
() INDICATES RECORD DATA PER MAP NO. 13248

ASSESSOR'S PARCEL NUMBER

313-690-31 AND 32

REFERENCE DRAWING:

26728-D



Norman S. Kasubuchi 11/20/97
NORMAN S. KASUBUCHI RCE 31829
EXPIRES 12-31-00



5190 Governor Drive, San Diego, CA 92122
CMR8.01-08.97 (619) 597-2001

SEWER EASEMENT ABANDONMENT IN LOTS 4 AND 5 OF CARMEL MOUNTAIN RANCH UNIT 18, MAP NO. 13248

DESCRIPTION	BY	APPROVED	DATE	FILMED	CITY OF SAN DIEGO, CALIFORNIA DEVELOPMENT SERVICES DEPARTMENT SHEET 1 OF 1 SHEET	W.O. NO. 920375
ORIGINAL	LEC				<i>Autenna</i> FOR CITY ENGINEER	NAD83 COORDINATES 1936-6305
					12-18-97 DATE	296-1745 LAMBERT COORDINATES
						18717 -B
STATUS						

EXHIBIT B

R-290019