

( R-98-1216)

RESOLUTION NUMBER R- 290075

ADOPTED ON MAY 11 1998

BE IT RESOLVED, by the Council of The City of San Diego, that a drainage easement in that portion of Lot 91 of U.S.G. Scripps Unit No. 1 of Map No. 10977, as shown on Drawing No. 18735-B, attached hereto as Exhibit "B", is accepted and set aside.

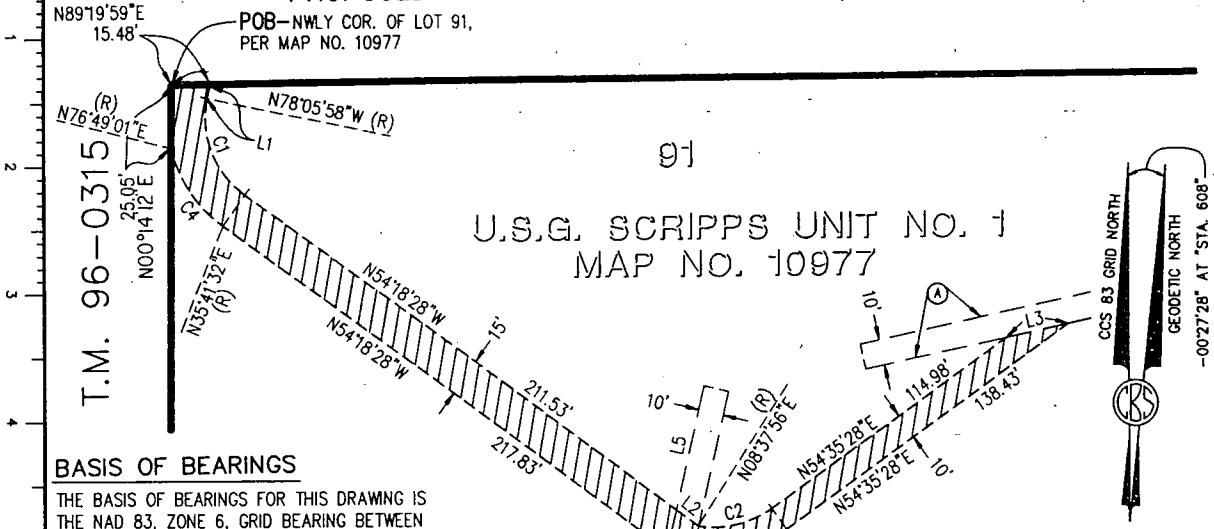
APPROVED: CASEY GWINN, City Attorney

By Prescilla Dugard  
Prescilla Dugard  
Deputy City Attorney

PD:cdk  
04/24/98  
Or.Dept:Dev.Svcs.  
WO.967655  
R-98-1216

# EXHIBIT "B"

POR. NW 1/4, SE 1/4, SEC. 27, T.14 S., R.2 W., S.B.M.  
 PROPOSED CYPRESS VALLEY UNIT NO. 1, T.M. 96-0315



### BASIS OF BEARINGS

THE BASIS OF BEARINGS FOR THIS DRAWING IS THE NAD 83, ZONE 6, GRID BEARING BETWEEN STATION "608" AND STATION "610", AS SAID STATIONS ARE SHOWN ON R. OF S. MAP NO. 14492, I.E. N. 82°21'28" W.

### LEGEND

- INDICATES DRAINAGE EASEMENT—SET ASIDE ACQUIRED (0.131 ACRE)
- INDICATES BOUNDARY OF PROPOSED CYPRESS VALLEY UNIT NO. 1, T.M. 96-0315

### LINE DATA

LINE	DIRECTION	DISTANCE
L1	N11°54'02"E	5.64'
L2	N53°53'59"W	10.88'
L3	N77°41'00"E	25.50'
L4	N88°10'57"W	10.19'
L5	N12°56'00"E	49.61'

### REFERENCE DRAWINGS

CITY DWGS. 21184-9-D & 28858-D AND MAP NO. 10977

### ASSESSORS PARCEL NO.

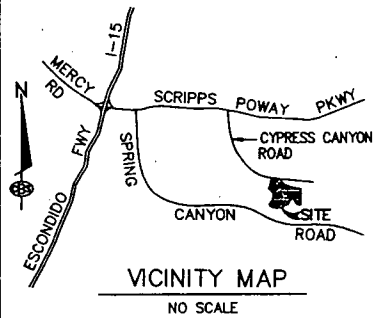
319-361-24-00

### CURVE DATA

CURVE	RADIUS	LENGTH	DELTA
C1	37.50'	43.33'	66°12'30"
C2	40.00'	30.75'	44°02'28"
C3	50.00'	39.18'	44°54'09"
C4	52.50'	37.68'	41°07'29"

### EASEMENT NOTES

(A) DRAINAGE EASEMENT GRANTED IN MAP NO. 10977



VICINITY MAP  
NO SCALE



### ENGINEER OF WORK:

*[Signature]* DATE 2/2/98  
 H. STELMAR R.C.E. 33589  
 CRAIG BULTHUIS & STELMAR  
 2611 ADAMS AVENUE  
 SAN DIEGO, CALIFORNIA 92116  
 PHONE: (619) 297-3974

### DRAINAGE EASEMENT SET ASIDE:

IN LOT 91 OF U.S.G. SCRIPPS UNIT NO. 1 PER MAP NO. 10977.  
 FOR PROPOSED CYPRESS VALLEY UNIT NO. 1, T.M. 96-0315.

DESCRIPTION	BY	APPROVED	DATE	FILMED	CITY OF SAN DIEGO, CALIFORNIA	T.M.
ORIGINAL	CB & S				SHEET 1 OF 1 SHEET	96-0315
						967655
						96000998
					<i>[Signature]</i> 4-10-98	1916-6307
					FOR CITY ENGINEER DATE	NAD 83 COORDINATES
						276-1747
						LAMBERT COORDINATES
						18735-B

R-290075