

RESOLUTION NUMBER R-290114

ADOPTED ON MAY 18 1998

WHEREAS, Section 8330 et seq. of the California Streets and Highways Code provides a procedure for the summary vacation of public service easements by City Council resolution where the easement is no longer required; and

WHEREAS, the abutting property owner, Teledyne Industries, Inc., has requested the vacation of various easements (a sewer, water, drain and public utilities easement, a water easement, and a water and railroad easement) within Parcel 2 of Parcel Map 17712 to facilitate development of its property; and

WHEREAS, the City Council finds that:

(a) there is no present or prospective use for the easements; and  
(b) the public will benefit from the vacation through improved utilization of land; and  
(c) the vacation is not inconsistent with the General Plan or an approved Community Plan; and

(d) the public service system for which the easements were originally acquired will not be detrimentally affected by this vacation; NOW, THEREFORE,

BE IT RESOLVED, by the Council of The City of San Diego, as follows:

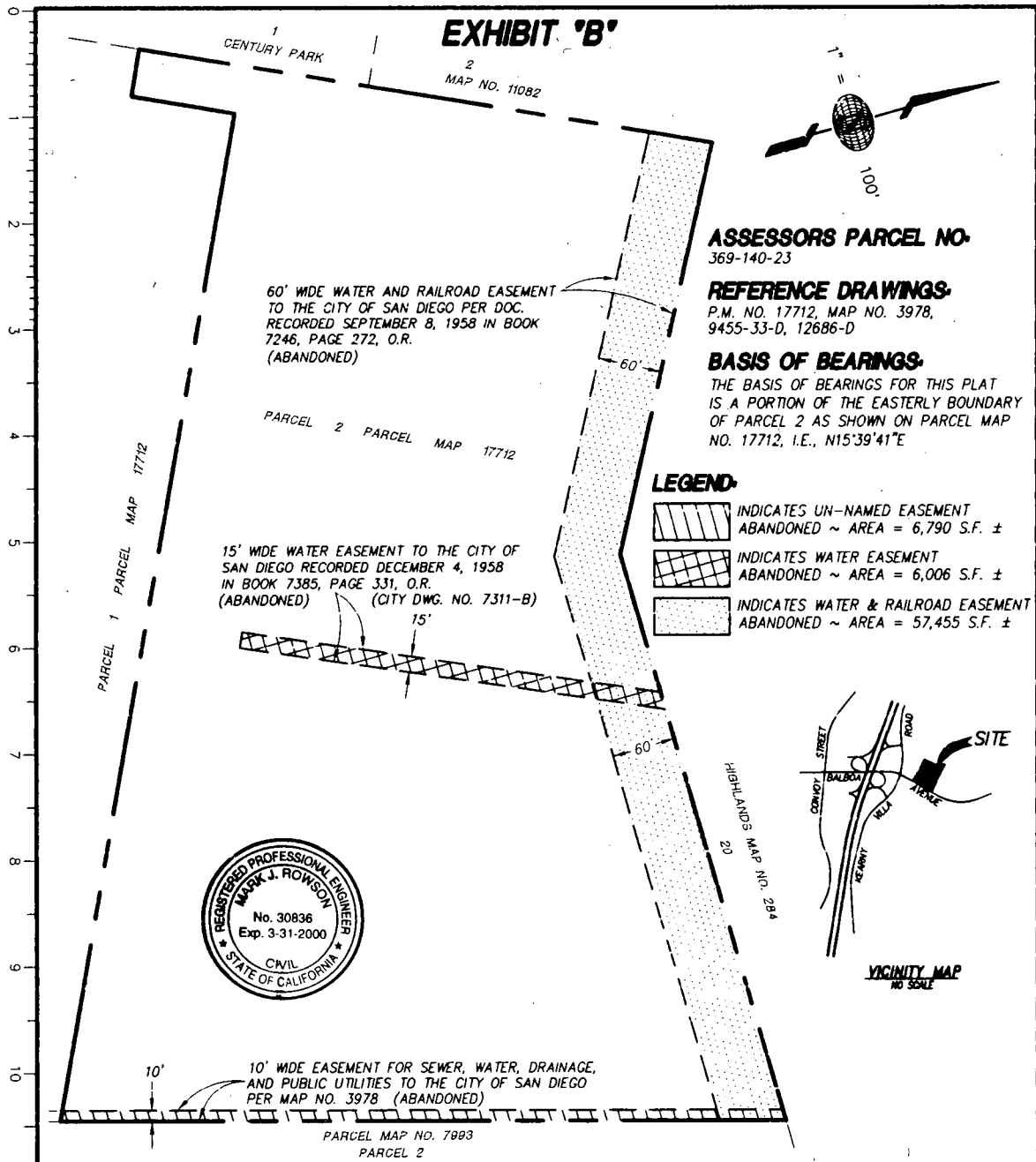
1. That the sewer, water, drain and public utilities easement, the water easement, and the water and railroad easement located within Parcel 2 of Parcel Map 17712, as more particularly shown on Drawing No. 18707-B, attached hereto and made a part hereof, be and the same are ordered vacated.

2. That the City Clerk shall cause a certified copy of this resolution, attested by him under seal, to be recorded in the office of the County Recorder.

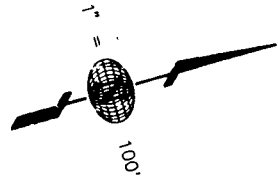
APPROVED: CASEY GWINN, City Attorney

By Prescilla Dugard  
Prescilla Dugard  
Deputy City Attorney

PD:cdk  
04/20/98  
Or.Dept:Dev.Svcs.  
WO:120102  
Dwg:18707-B  
R-98-1181  
Form=sumv.frm



**EXHIBIT 'B'**



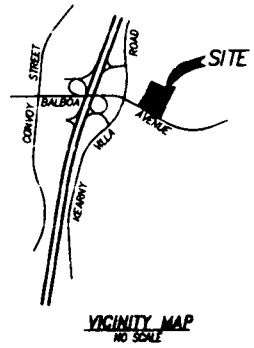
**ASSESSORS PARCEL NO.**  
369-140-23

**REFERENCE DRAWINGS-**  
P.M. NO. 17712, MAP NO. 3978,  
9455-33-D, 12686-D

**BASIS OF BEARINGS-**  
THE BASIS OF BEARINGS FOR THIS PLAT  
IS A PORTION OF THE EASTERLY BOUNDARY  
OF PARCEL 2 AS SHOWN ON PARCEL MAP  
NO. 17712, I.E., N15°39'41"E

**LEGEND-**

- INDICATES UN-NAMED EASEMENT ABANDONED ~ AREA = 6,790 S.F. ±
- INDICATES WATER EASEMENT ABANDONED ~ AREA = 6,006 S.F. ±
- INDICATES WATER & RAILROAD EASEMENT ABANDONED ~ AREA = 57,455 S.F. ±



10' WIDE EASEMENT FOR SEWER, WATER, DRAINAGE,  
AND PUBLIC UTILITIES TO THE CITY OF SAN DIEGO  
PER MAP NO. 3978 (ABANDONED)

*Mark J. Rowson* **JAN 7, 1998**  
MARK J. ROWSON R.C.E. 30836 DATE  
MY REGISTRATION EXPIRES 03-31-2000

**Latitude 33**  
Planning and Engineering

**EASEMENT FOR SEWER, WATER, DRAINAGE, AND PUBLIC UTILITIES ABANDONED-** IN PARCEL 2 OF P.M. 17712  
**WATER EASEMENT ABANDONED-** IN PARCEL 2 OF P.M. 17712  
**WATER AND RAILROAD EASEMENT ABANDONED-** IN PARCEL 2 OF P.M. 17712

| DESCRIPTION | BY    | APPROVED | DATE | FILMED | CITY OF SAN DIEGO, CALIFORNIA | W.O. NO. 120102     |
|-------------|-------|----------|------|--------|-------------------------------|---------------------|
| ORIGINAL    | LAT33 |          |      |        | SHEET 1 OF 1 SHEET            | I.D. A-586          |
|             |       |          |      |        | <i>Joe Skinner</i> 2-12-98    | 1880-6285           |
|             |       |          |      |        | FOR CITY ENGINEER DATE        | CCS 83 COORDINATES  |
|             |       |          |      |        |                               | 240-1725            |
|             |       |          |      |        |                               | LAMBERT COORDINATES |
|             |       |          |      |        |                               | <b>18707-B</b>      |

*R.* 290114