

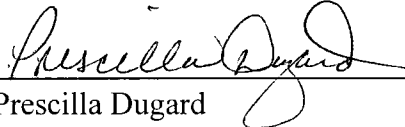
(R-99-363)

RESOLUTION NUMBER R- 290793

ADOPTED ON OCT 05 1998

BE IT RESOLVED, by the Council of The City of San Diego, that an open space in Parcel 1 of N.C.W. Neighborhood 4A, Unit 2, Map No. 12146, as shown on Drawing No. 18762-B attached hereto as Exhibit "A", is set aside for a water easement.

APPROVED: CASEY GWINN, City Attorney

By 
Prescilla Dugard
Deputy City Attorney.

PD:cdk
09/18/98
Or.Dept:Dev.Svcs.
W.O.967078
R-99-363

EXHIBIT "A"

BASIS OF BEARINGS

THE BASIS OF BEARINGS FOR THIS DRAWING IS A PORTION OF THE NORTHERLY LINE OF MAP NO. 12146 I.E. N 65°00'00" W

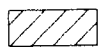
ASSESSOR'S PARCEL NO.

304-353-01

REFERENCE DRAWINGS

MAP NO. 12146, 28794-35-D

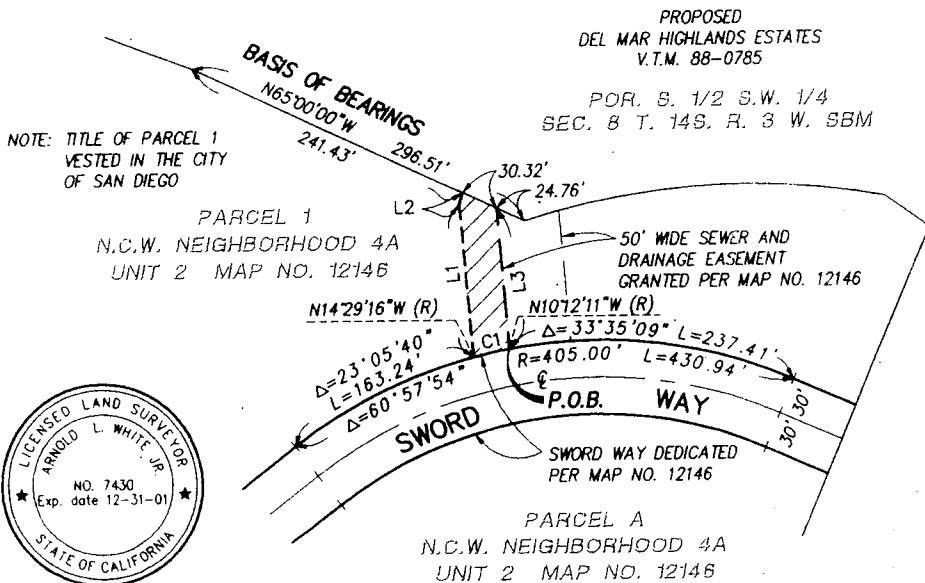
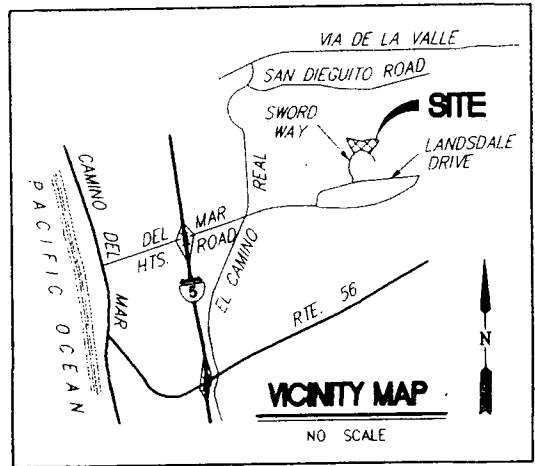
LEGEND

 INDICATES WATER EASEMENT SET ASIDE
AREA = 3718 SQUARE FEET
= 0.085 ACRES

P.O.B. INDICATES POINT OF BEGINNING

LINE	BEARING	DISTANCE
L1	N04°32'11"W	123.98'
L2	N16°36'45"E	10.02'
L3	N04°32'11"W	114.27'

CURVE	DELTA	RADIUS	LENGTH
C1	04°17'05"	405.00'	30.29'



NOTE: TITLE OF PARCEL 1 VESTED IN THE CITY OF SAN DIEGO

PROPOSED
DEL MAR HIGHLANDS ESTATES
V.T.M. 88-0785

POR. S. 1/2 S.W. 1/4
SEC. 8 T. 14S. R. 3 W. SBM



Project Design Consultants
PLANNING ENGINEERING SURVEYING
701 "B" Street, Suite 800, San Diego, Ca. 92101
619-235-6471 FAX 234-0349

Arnold L. White Jr. 6-24-98
ARNOLD L. WHITE JR. L.S. 7430 DATE
MY REGISTRATION EXPIRES 12/31/2001

WATER EASEMENT SET ASIDE

IN PARCEL 1 OF N.C.W. NEIGHBORHOOD 4A, UNIT 2
MAP NO. 12146

DESCRIPTION	BY	APPROVED	DATE	FILMED	CITY OF SAN DIEGO, CALIFORNIA		W.C. NO.
ORIGINAL	PDC				SHEET 1 OF 1 SHEET		967078
FILE: 1252WTR1.DWG					<i>Subenies</i>	7-10-98	1928-6264
					FOR CITY ENGINEER	DATE	CCS '83 COORDINATES
							288-1703
							LAMBERT COORDINATES
							18762-B

R-290793