

(R-99-1378)

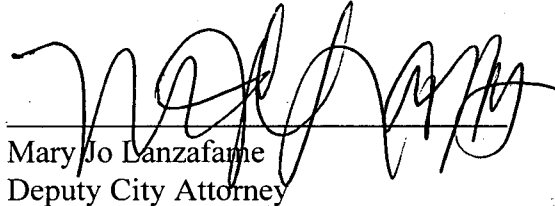
RESOLUTION NUMBER R- 291711

ADOPTED ON JUN 01 1999

BE IT RESOLVED, by the Council of The City of San Diego, that a portion of Parcel 602 as described in deed recorded June 29, 1992, as Document No. 1992-0404824, in the Northeast Quarter of Section 31, Township 14 South, Range 2 West, San Bernadino Meridian, as more particularly shown on Drawing Nos. 18983-1-B and 18983-2-B, which is attached hereto and made a part hereof, is dedicated as and for a public street, and is named Mira Mesa Boulevard.

APPROVED: CASEY GWINN, City Attorney

By

  
Mary Jo Lanzafame  
Deputy City Attorney

MJL:cdk  
05/19/99  
Or.Dept:Plan.&Dev.Rev.  
W.O.981046  
R-99-1378

**BASIS OF BEARINGS**

THE BASIS OF BEARINGS FOR THIS MAP IS THE NAD 83, ZONE 6 GRID BEARING BETWEEN CITY OF SAN DIEGO GPS CONTROL MONUMENTS "BLACK MOUNTAIN RD. AND HILLERY DRIVE" (GPS CONTROL MONUMENT NO. 627) AND "MIRA MESA PARK AND RIDE" (GPS CONTROL MONUMENT NO. 126) AS SHOWN ON ROS 14492

I.E., N48°33'04"E

THE COMBINED SCALE FACTOR AT CITY OF SAN DIEGO CONTROL MONUMENT NO. 627 IS 0.99996259. GRID DISTANCE = GROUND DISTANCE x COMBINED SCALE FACTOR.

QUOTED BEARINGS FROM REFERENCE MAPS/DEEDS MAY OR MAY NOT BE IN TERMS OF SAID SYSTEM.

**ASSESSOR'S PARCEL NO.**

318-042-07

**REFERENCE DRAWINGS**

MAP NO. 12628, ROS NO.3933, 24977-5,6-D

**LEGEND**



INDICATES STREET DEDICATION - MIRA MESA BOULEVARD  
PARCEL 'A' - AREA= 0.34 ACRES

**A**

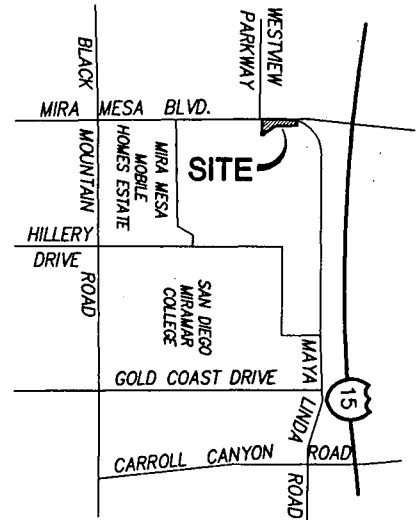
INDICATES PARCEL 602, FINAL ORDER OF CONDEMNATION PER FILE NO. 92-0404824 RECORDED JUNE 29, 1992

**B**

INDICATES A PORTION OF MIRA MESA BOULEVARD DEDICATED PER DEED RECORDED JAN. 3, 1961 AS F/P NO. 281, SER. 2, BK. 1961; O.R., CITY DWG. # 9393-D

**C**

INDICATES A PORTION OF MIRA MESA BOULEVARD DEDICATED PER MAP NO. 12628



**VICINITY MAP**

NO SCALE



F:\ENGR\1258\PLATS\1258STD00-MIRAMESA.DWG

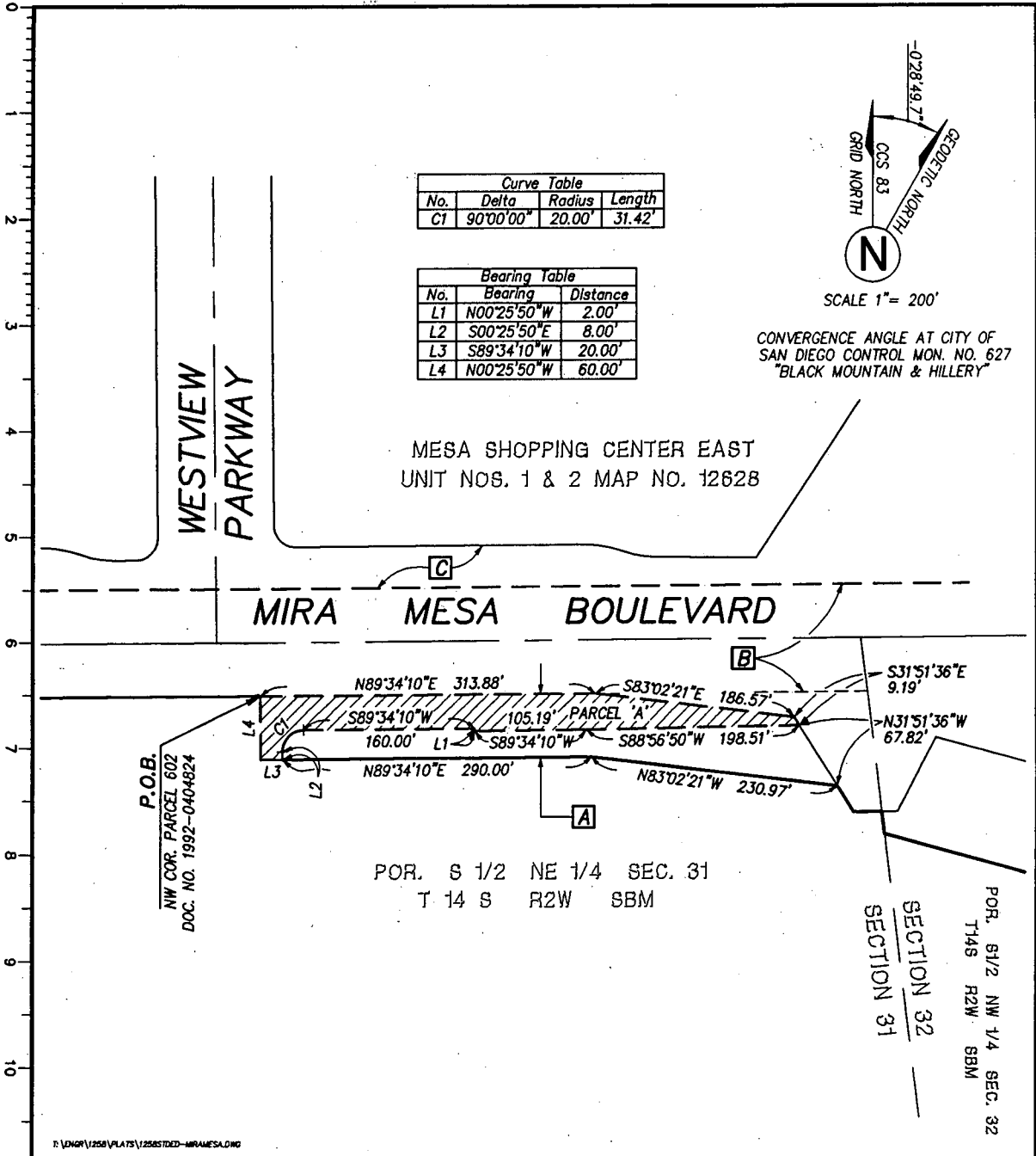
**Project Design Consultants**  
PLANNING ENGINEERING SURVEYING  
701 "B" Street, Suite 800, San Diego, Ca. 92101  
619-235-6471 FAX 234-0349

*Arnold L. White Jr.* 4.1.99  
ARNOLD L. WHITE JR., L.S. 7430 DATE  
REGISTRATION EXPIRES 12/31/2001

**STREET DEDICATION - MIRA MESA BOULEVARD  
SOUTH OF WESTVIEW PARKWAY**

DESCRIPTION	BY	APPROVED	DATE	FILMED	CITY OF SAN DIEGO, CALIFORNIA	W.O. NO. 981046
ORIGINAL	PDC				SHEET 1 OF 2 SHEETS	1914-6241
					<i>Arnold L. White Jr.</i> 6 MAR 99 FOR CITY ENGINEER DATE	OCS '83 COORDINATES
						274-1731
						LAMBERT COORDINATES
						<b>18983-1-B</b>

R. 291711



**Project Design Consultants**  
 PLANNING ENGINEERING SURVEYING  
 701 "B" Street, Suite 800, San Diego, Ca. 92101  
 619-236-6471 FAX 234-0349

*Arnold L. White Jr.* / 4-1-99  
 ARNOLD L. WHITE JR., L.S. 7430 DATE  
 REGISTRATION EXPIRES 12/31/2001

**STREET DEDICATION - MIRA MESA BOULEVARD**  
 IN A PORTION OF THE NORTHEAST QUARTER OF SECTION 31,  
 TOWNSHIP 14 SOUTH, RANGE 2 WEST, S.B.M.

DESCRIPTION	BY	APPROVED	DATE	FILED	CITY OF SAN DIEGO, CALIFORNIA	W.O. NO.
ORIGINAL	PDC				SHEET 2 OF 2 SHEETS	981046
					<i>Arnold L. White Jr.</i> FOR CITY ENGINEER	1914-6241
					DATE	CCS '83 COORDINATES
						274-1731
						LAMBERT COORDINATES
						18983-2-B

R. 291711