

RESOLUTION NUMBER R- 293439

ADOPTED ON JUL 17 2000

WHEREAS, Section 8330 et seq. of the California Streets and Highways Code provides a procedure for the summary vacation of public easements by City Council resolution where the easement is no longer required; and

WHEREAS, the affected property owner has requested the vacation of the easements within, to unencumber this property and facilitate development of the site; and

WHEREAS, the City Council finds that:

(a) there is no present or prospective use for the public service easements either for the public street system, for which the right-of-way was originally acquired, or for any other public use of a like nature that can be anticipated in that the right-of-way is not needed for public street, bikeway, or open space purposes; and

(b) the public will benefit from the vacation through improved utilization of land; and

(c) the vacation is not inconsistent with the General Plan or an approved Community Plan; and

(d) the public service easements for which the right-of-way was originally acquired will not be detrimentally affected by this vacation; NOW, THEREFORE,

BE IT RESOLVED, by the Council of The City of San Diego, as follows:

1. That the unneeded drainage easement recorded August 10, 1990 as F/P 90-439280, as more particularly shown on Drawing No. 00013-1-C, on file in the office of the City Clerk as

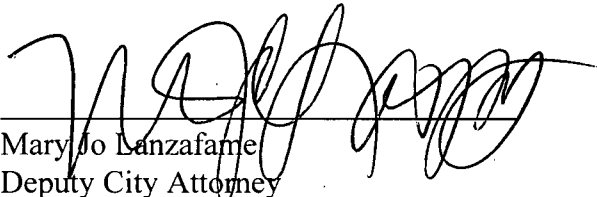
Document No. RR- 293439-1, which is by this reference incorporated herein and made a part hereof, is ordered vacated.

2. That the unneeded drainage easement, water easement, sewer and water easement, sewer easement and building restricted easement located in Lots 70, 71, and 73 of Westview Unit No. 10, Map No. 12870, as more particularly shown on Drawing No. 00013-1-C, on file in the office of the City Clerk as Document No. RR- 293439-2, which is by this reference incorporated herein and made a part hereof, is ordered vacated.

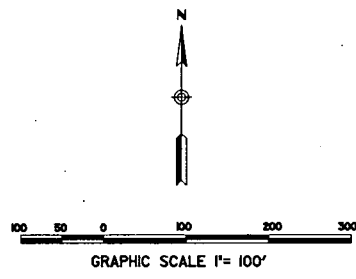
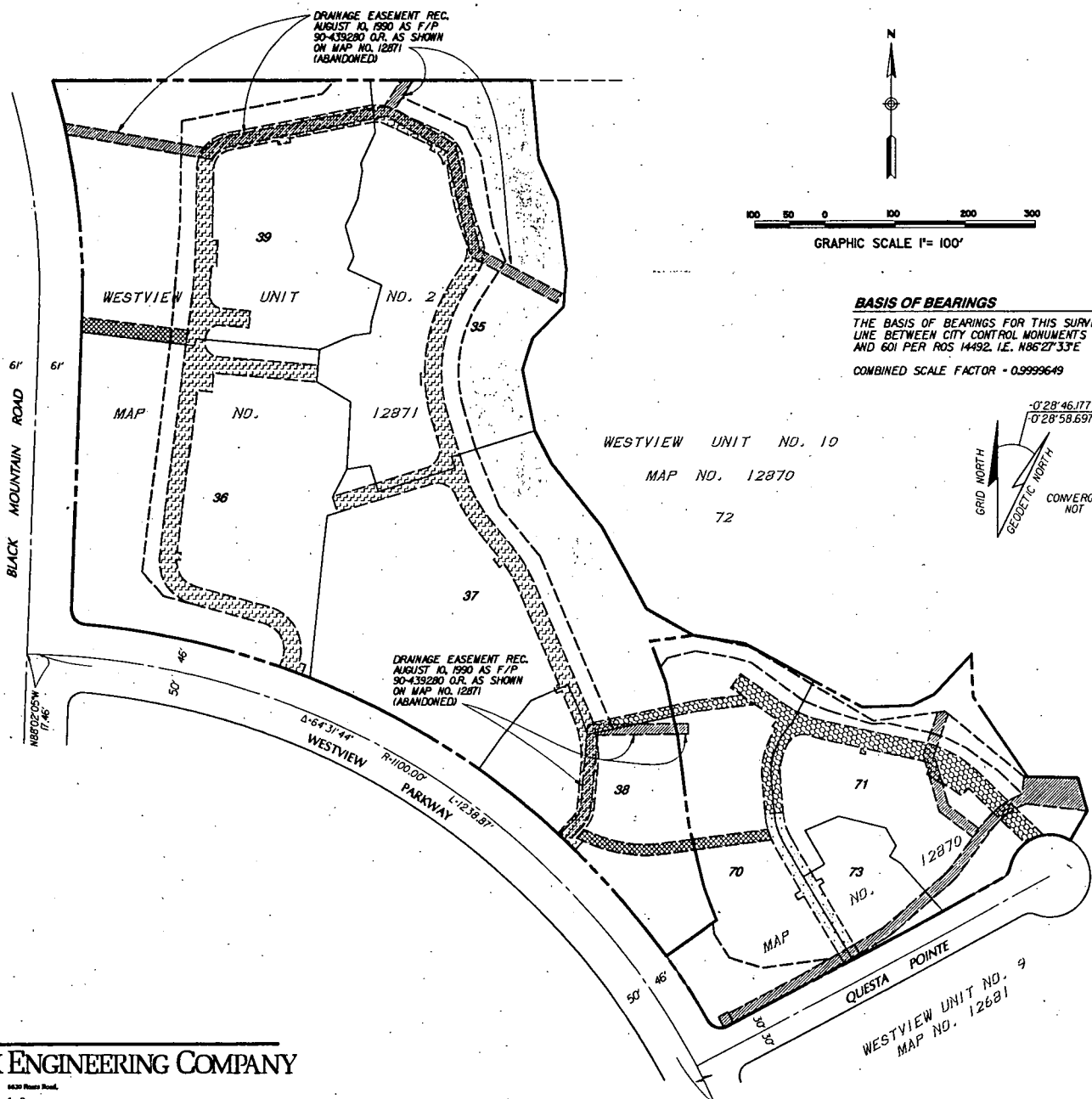
3. That the unneeded sewer, water and drainage easement, sewer easement, water easement and building restricted easement in Lots 35 through 39 of Westview Unit No. 2, Map No 12871, as more particularly shown on Drawing No. 00013-1-C, on file in the office of the City Clerk as Document No. RR- 293439-3, which is by this reference incorporated herein and made a part hereof, is ordered vacated.

4. That the City Clerk shall cause a certified copy of this resolution, attested by him under seal, to be recorded in the office of the County Recorder.

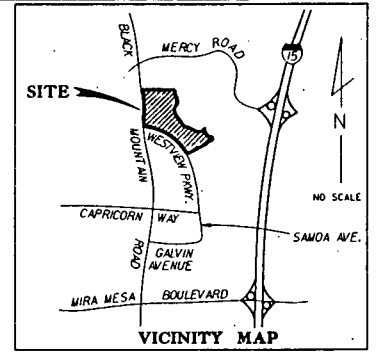
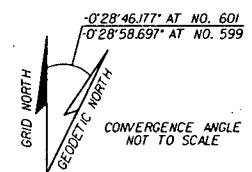
APPROVED: CASEY GWINN, City Attorney

By 
Mary Jo Lanzafame
Deputy City Attorney

MJL:pev
6/29/00
Or.Dept:PDR
WO:990211
Dwg:00013-1-C
R-2000-1681
Form=sumv.frm



BASIS OF BEARINGS
 THE BASIS OF BEARINGS FOR THIS SURVEY IS THE LINE BETWEEN CITY CONTROL MONUMENTS NOS. 599 AND 601 PER ROS 14492, I.E. N86°27'33"E
 COMBINED SCALE FACTOR = 0.9999649



- LEGEND**
- [Hatched pattern] INDICATES DRAINAGE EASEMENT GRANTED PER MAP NO. 12870 (ABANDONED), UNLESS OTHERWISE NOTED
 - [Dotted pattern] INDICATES SEWER, WATER & DRAINAGE EASEMENT GRANTED PER MAP NO. 12871 (ABANDONED)
 - [Cross-hatched pattern] INDICATES WATER EASEMENTS GRANTED PER MAPS 12870 & 12871 (ABANDONED)
 - [Diagonal lines] INDICATES SEWER EASEMENTS GRANTED PER MAPS 12870 & 12871 (ABANDONED)
 - [Stippled pattern] INDICATES SEWER & WATER EASEMENT GRANTED PER MAP NO. 12870 (ABANDONED)
 - [White box] INDICATES BUILDING RESTRICTED EASEMENT GRANTED PER MAPS 12870 & 12871 (ABANDONED)
- T.P.D.B. INDICATES TRUE POINT OF BEGINNING
 P.O.B. INDICATES POINT OF BEGINNING
 P.O.C. INDICATES POINT OF COMMENCEMENT

REFERENCE DRAWINGS
 DWG NOS. 30059-D & 29856-D

ASSESSOR PARCEL NOS.
 318-570-06, 07, 09, 01, 02, 03, 04 & 05

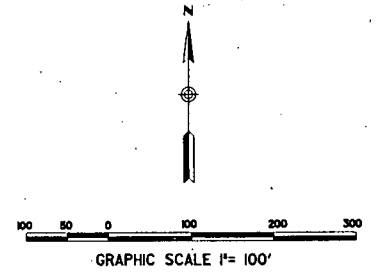
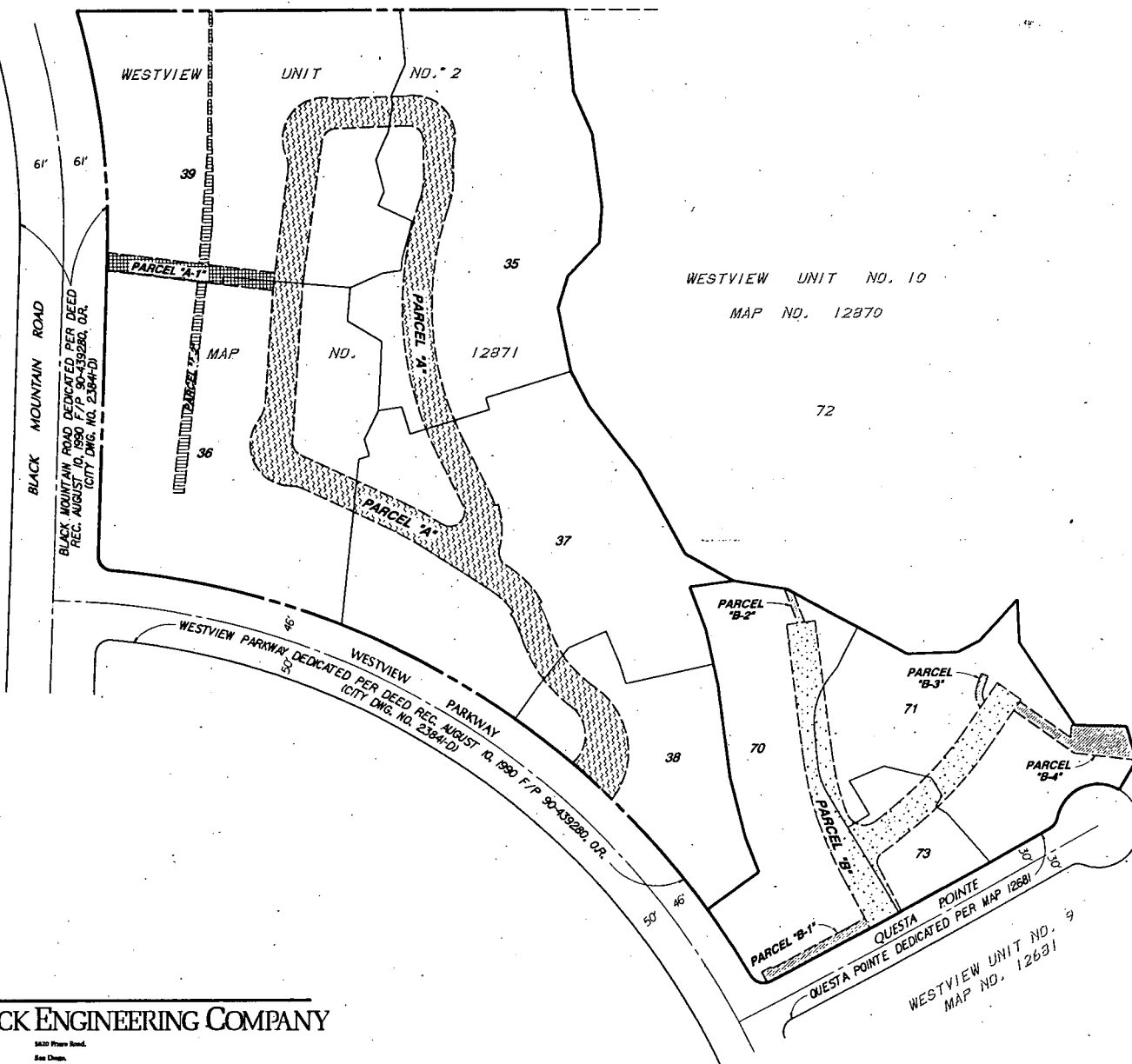
SURVEYOR OF WORK
Robert G. Schoettmer 2-8-2000
 ROBERT G. SCHOETTNER, LS 4324 DATE J-13410



VACATION OF DRAINAGE EASEMENT REC. AUGUST 10, 1990 AS F/P 90-439280 AND DRAINAGE EASEMENT, WATER EASEMENT, SEWER & WATER EASEMENT, SEWER EASEMENT AND BUILDING RESTRICTED EASEMENT AS SHOWN IN LOTS 70, 71 & 73 OF WESTVIEW UNIT NO. 10 MAP 12870 AND SEWER, WATER AND DRAINAGE EASEMENT, SEWER EASEMENT, WATER EASEMENT AND BUILDING RESTRICTED EASEMENT AS SHOWN IN LOTS 35 THRU 39 OF WESTVIEW UNIT NO. 2 MAP 12871

CITY OF SAN DIEGO, CALIFORNIA PLANNING AND DEVELOPMENT REVIEW SHEET 1 OF 4 SHEETS		R.O. NO. 990211
FOR CITY ENGINEER _____ DATE _____		
DESCRIPTION	BY	APPROVED DATE FILED
ORIGINAL	REC	
	Dr	
		1918-6291 NAD 83 COORDINATES
		278-1731 LAMBERT COORDINATES
CONTRACTOR _____	DATE STARTED _____	00013-1-C
INSPECTOR _____	DATE COMPLETED _____	

RR-293439-1



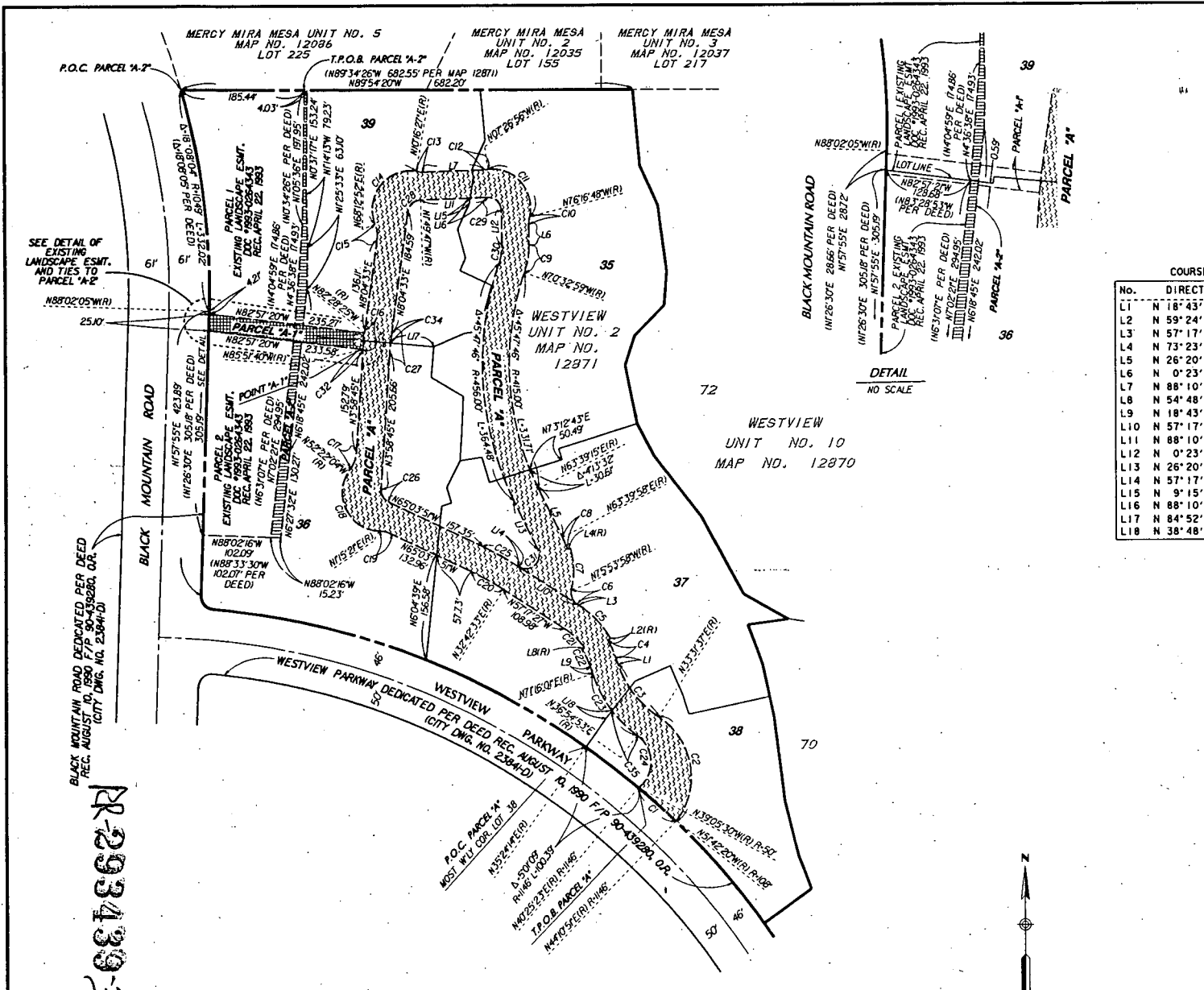
- LEGEND**
- INDICATES SEWER EASEMENT - ACQUIRED PARCEL 'A-F'
 - INDICATES DRAINAGE EASEMENT - ACQUIRED PARCEL 'B-1', 'B-2', 'B-3' AND 'B-4'
 - INDICATES LANDSCAPING EASEMENT - ACQUIRED PARCEL 'A-2' - 0.63 ACRES
 - INDICATES SEWER & WATER EASEMENT - ACQUIRED, PARCEL 'A'
 - INDICATES SEWER, WATER & DRAINAGE EASEMENT - ACQUIRED, PARCEL 'B'
- T.P.D.B. INDICATES TRUE POINT OF BEGINNING
P.O.B. INDICATES POINT OF BEGINNING
P.O.C. INDICATES POINT OF COMMENCEMENT

NOTE
SEE SHEETS 3 AND 4 FOR DETAIL

RR-293439-2

J-13410

SEWER EASEMENT, SEWER & WATER EASEMENT, SEWER, WATER & DRAINAGE EASEMENT, DRAINAGE EASEMENTS AND LANDSCAPING EASEMENT IN LOTS 35 THRU 39 OF WESTVIEW UNIT NO. 2 MAP NO. 12871 AND IN LOTS 70, 71 AND 73 OF WESTVIEW UNIT NO. 10 MAP NO. 12870				W.D. NO. 990211
CITY OF SAN DIEGO, CALIFORNIA PLANNING AND DEVELOPMENT REVIEW SHEET 2 OF 4 SHEETS				
FOR CITY ENGINEER		DATE		
DESCRIPTION	BY	APPROVED	DATE	FILED
ORIGINAL	REC			
				1918-6291 NAD 83 COORDINATES
				278-1731 LAMBERT COORDINATES
CONTRACTOR	DATE STARTED			00013-2-C
INSPECTOR	DATE COMPLETED			



LEGEND

- INDICATES SEWER EASEMENT - ACQUIRED PARCEL 'A' - 0.134 ACRES
- INDICATES LANDSCAPING EASEMENT - ACQUIRED PARCEL 'A' - 0.163 ACRES
- INDICATES SEWER & WATER EASEMENT - ACQUIRED, PARCEL 'A' - 1.973 ACRES

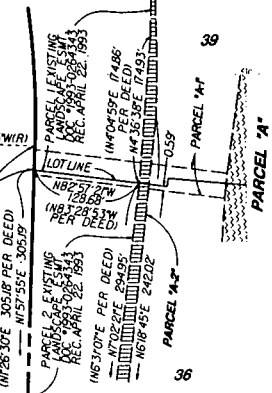
T.P.O.B. INDICATES TRUE POINT OF BEGINNING
 P.O.C. INDICATES POINT OF COMMENCEMENT
 (R) INDICATES RADIAL BEARING

COURSE TABLE

No.	DIRECTION	DISTANCE
L1	N 18° 43' 59" W	10.26'
L2	N 59° 24' 06" E	5.00'
L3	N 57° 17' 27" W	3.62'
L4	N 73° 23' 15" E	5.00'
L5	N 26° 20' 46" W	81.04'
L6	N 0° 23' 00" W	30.92'
L7	N 88° 10' 13" E	94.51'
L8	N 54° 48' 53" E	5.00'
L9	N 18° 43' 59" W	10.26'
L10	N 57° 17' 27" W	104.06'
L11	N 88° 10' 13" E	102.28'
L12	N 0° 23' 00" W	51.58'
L13	N 26° 20' 02" W	79.41'
L14	N 57° 17' 27" W	1.30'
L15	N 9° 15' 06" E	8.05'
L16	N 88° 10' 13" E	27.15'
L17	N 84° 52' 14" E	65.70'
L18	N 38° 48' 10" E	13.99'

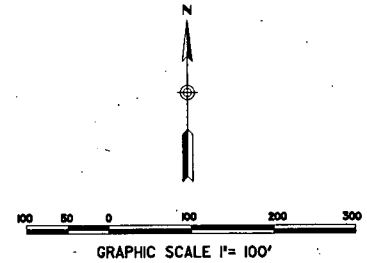
CURVE TABLE

No.	DELTA	RADIUS	ARC
C1	3° 45' 28"	1146.00'	75.16'
C2	94° 46' 04"	108.00'	178.63'
C3	37° 44' 25"	152.00'	100.12'
C4	11° 51' 55"	143.00'	29.61'
C5	26° 41' 33"	148.00'	68.95'
C6	71° 23' 30"	20.00'	24.92'
C7	30° 42' 47"	116.00'	62.18'
C8	9° 44' 01"	111.00'	18.86'
C9	19° 50' 00"	123.00'	42.58'
C10	14° 06' 12"	47.00'	11.57'
C11	111° 10' 08"	57.00'	110.60'
C12	5° 37' 09"	47.00'	4.61'
C13	12° 06' 14"	47.00'	9.93'
C14	122° 03' 35"	57.00'	121.43'
C15	29° 51' 41"	47.00'	24.50'
C16	3° 56' 13"	423.00'	29.06'
C17	33° 39' 11"	47.00'	27.61'
C18	126° 22' 36"	57.00'	125.72'
C19	23° 40' 48"	47.00'	19.42'
C20	7° 46' 24"	415.00'	56.30'
C21	22° 06' 20"	107.00'	41.28'
C22	16° 27' 08"	102.00'	29.29'
C23	34° 21' 08"	193.00'	115.72'
C24	103° 59' 38"	50.00'	90.75'
C25	7° 46' 24"	456.00'	61.87'
C26	69° 02' 37"	19.00'	22.90'
C27	4° 05' 48"	382.00'	27.31'
C28	80° 05' 41"	20.00'	27.96'
C29	91° 26' 48"	20.00'	31.92'
C30	19° 50' 00"	82.00'	28.39'
C31	150° 48' 14"	20.00'	52.64'
C32	0° 09' 35"	423.00'	1.18'
C33	3° 23' 15"	423.00'	25.01'
C34	2° 06' 11"	382.00'	14.02'
C35	15° 49' 43"	193.00'	53.32'



2293439-R
 12-22-12

RICK ENGINEERING COMPANY.
 1139 Phoen Road.
 San Diego, California 92110-2908
 (619) 591-8707



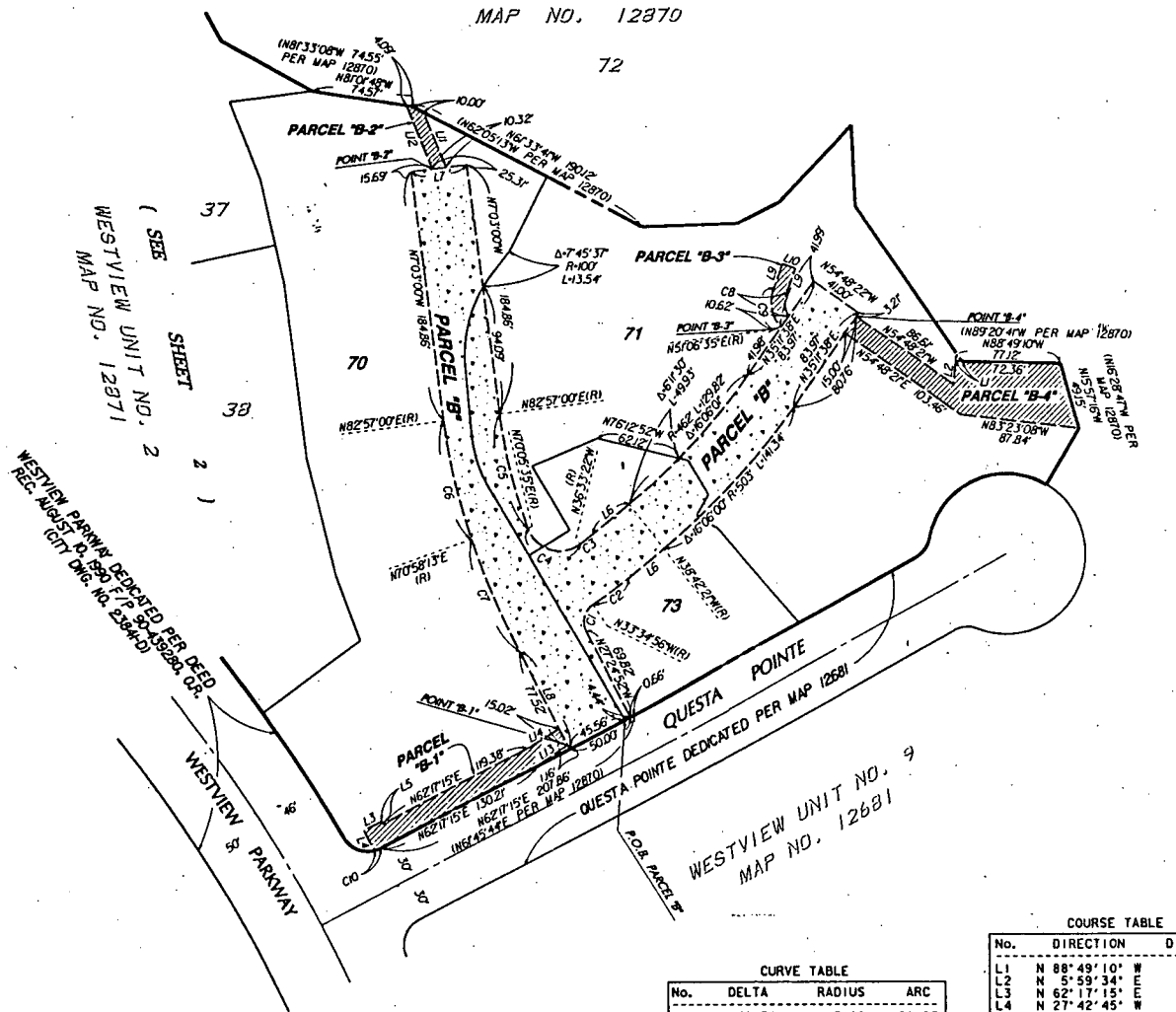
**SEWER & WATER EASEMENT,
 SEWER EASEMENT AND LANDSCAPING
 EASEMENT IN LOTS 35 THRU 39
 OF WESTVIEW UNIT NO. 2 MAP NO. 12871,**

CITY OF SAN DIEGO, CALIFORNIA PLANNING AND DEVELOPMENT REVIEW SHEET 3 OF 4 SHEETS		W.D. NO. 990211
FOR CITY ENGINEER _____ DATE _____		
DESCRIPTION	BY	APPROVED
ORIGINAL	REC	DATE
		FILED
		1918-6291 MAD BY COORDINATES
		278-1731 LAMBERT COORDINATES
CONTRACTOR _____	DATE STARTED _____	00013-3-C
INSPECTOR _____	DATE COMPLETED _____	

WESTVIEW UNIT NO. 10

MAP NO. 12870

72



WESTVIEW PARKWAY DEDICATED PER DEED REC. AUGUST 10, 1980, P. 7, 2, 50-18288, C.D.R. MAP NO. 12871

WESTVIEW PARKWAY DEDICATED PER DEED REC. AUGUST 10, 1980, P. 7, 2, 50-18288, C.D.R. MAP NO. 12871

R-293439-36

LEGEND

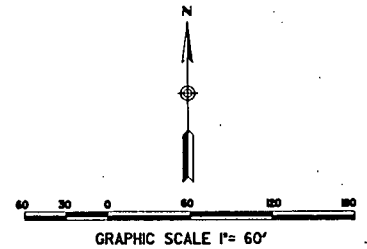
INDICATES DRAINAGE EASEMENT - ACQUIRED
 PARCEL 'B-1' - 0.056 ACRES, PARCEL 'B-2' 0.011 ACRES
 PARCEL 'B-3' - 0.010 ACRES, PARCEL 'B-4' 0.014 ACRES

INDICATES SEWER, WATER & DRAINAGE EASEMENT - ACQUIRED, PARCEL 'B' - 0.017 ACRES

P.D.B. INDICATES POINT OF BEGINNING

REFERENCE DRAWINGS

DWG NO. 29856-D



CURVE TABLE

No.	DELTA	RADIUS	ARC
C1	83° 49' 56"	15.00	21.95
C2	5° 07' 25"	353.00	31.57
C3	2° 08' 59"	312.00	11.71
C4	106° 38' 57"	25.00	46.53
C5	12° 51' 24"	382.00	85.72
C6	11° 58' 46"	423.00	88.44
C7	8° 23' 04"	610.00	89.27
C8	50° 36' 47"	20.00	17.67
C9	58° 59' 09"	30.00	30.88
C10	12° 58' 33"	20.00	4.53

COURSE TABLE

No.	DIRECTION	DISTANCE
L1	N 88° 49' 10" W	4.76
L2	N 5° 59' 34" E	16.85
L3	N 62° 17' 15" E	15.00
L4	N 27° 42' 45" W	16.82
L5	N 27° 42' 45" W	2.33
L6	N 51° 17' 39" E	34.20
L7	N 82° 57' 00" E	41.00
L8	N 27° 24' 52" W	78.68
L9	N 20° 05' 44" E	19.09
L10	N 69° 54' 17" W	10.00
L11	N 21° 15' 47" W	44.44
L12	N 21° 15' 47" W	51.59
L13	N 59° 50' 10" E	27.02
L14	N 59° 50' 10" E	27.42

SEWER, WATER AND DRAINAGE EASEMENT AND DRAINAGE EASEMENTS IN LOTS 70, 71 AND 73 OF WESTVIEW UNIT NO. 10 MAP NO. 12870,

CITY OF SAN DIEGO, CALIFORNIA PLANNING AND DEVELOPMENT REVIEW SHEET 4 OF 4 SHEETS		W.O. NO. 990211
FOR CITY ENGINEER		DATE
DESCRIPTION	BY	APPROVED DATE FILED
ORIGINAL	REC	
		1918-6291 NAD 83 COORDINATES
		278-1731 LAMBERT COORDINATES
CONTRACTOR	DATE STARTED	00013-4-C
INSPECTOR	DATE COMPLETED	

RICK ENGINEERING COMPANY.

11400 Main Road,
San Diego,
California 92118-2900

J-13410