

ORDINANCE NUMBER O- 19288 (NEW SERIES)

ADOPTED ON JUN 07 2004

AN ORDINANCE OF THE COUNCIL OF THE CITY OF SAN DIEGO AMENDING CHAPTER 13, ARTICLE 2, DIVISION 9, BY AMENDING SECTION 132.0902; AND CHAPTER 13, ARTICLE 2, DIVISION 10, BY AMENDING SECTION 132.1002, PERTAINING TO THE RESIDENTIAL TANDEM PARKING OVERLAY ZONE AND THE TRANSIT AREA OVERLAY ZONE, RESPECTIVELY.

WHEREAS, in December 1997, by Ordinance No. O-18451 N.S., the City Council adopted the Residential Tandem Parking and Transit Area Overlay Zones to respond to the community's desire to have reduced parking regulations and allow tandem parking in areas with a high level of transit service; and

WHEREAS, on January 9, 2001, by Ordinance No. O-18911 N.S., the City Council adopted amendments to the Residential Tandem Parking and Transit Area Overlay Zones and incorporated additional areas within those overlay zones due to extensive improvements in transit and an improved methodology that analyzed overlapping transit routes as shown on the Map Nos. C-903 and C-900; and

WHEREAS, since the adoption of Ordinance No. O-18911, various community members and the Community Planners Committee have voiced concern about and opposition to incorporating additional areas into the TAOZ and RTPOZ; and

WHEREAS, on October 16, 2003, the Planning Commission held a public hearing to consider all testimony and recommended to the City Council that it not adopt the amendments to

the Residential Tandem Parking and Transit Area Overlay Zone regulations; NOW,
THEREFORE,

BE IT ORDAINED, by the City Council of the City of San Diego, as follows:

Section 1. That Chapter 13, Article 2, Division 9, of the San Diego Municipal Code is amended by amending sections 132.0902, to read as follows:

§132.0902 Where the Residential Tandem Parking Overlay Zone Applies

- (a) This overlay zone applies to property located outside the boundaries shown on Map No. C-908 (Coastal Overlay Zone) and within the boundaries shown on Map No. C-922, filed in the office of the City Clerk under Document No. OO-19288. These areas are shown generally on Diagrams 132-04A and 132-09A and should be viewed together.
- (b) This overlay zone applies to property located within the boundaries shown on Map No. C-908 (Coastal Overlay Zone) and Map No. C-903 filed in the office of the City Clerk under Document Nos. OO-18872 and OO-18911-1, respectively. These areas are shown generally on Diagrams 132-04A and 132-09B and should be viewed together.
- (c) [No change in text.]

Table 132-09A

Residential Tandem Parking Overlay Zone Applicability

[No change.]

Section 2. That Chapter 13, Article 2, Division 10, of the San Diego Municipal Code is amended by amending sections 132.1002, to read as follows:

§132.1002 Where the Transit Area Overlay Zone Applies

- (a) This overlay zone applies to property located outside the boundaries shown on Map No. C-908 (Coastal Overlay Zone) and within the boundaries shown on Map No. C-921, filed in the office of the City Clerk as Document No. OO-19287-2. These areas are shown generally on Diagrams 132-04A and 132-10A and should be viewed together.
- (b) This overlay zone applies to property located within both the boundaries shown on Map No. C-908 (Coastal Overlay Zone) and Map No. C-900, filed in the office of the City Clerk under Document Nos. OO-18872 and OO-18911-2, respectively. These areas are shown generally on Diagrams 132-04A and 132-10B and should be viewed together.
- (c) [No change in text.]

Table 132-10A

Transit Area Overlay Zone Applicability

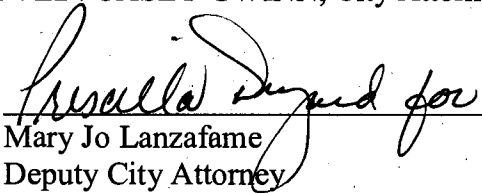
[No change.]

Section 3. That a full reading of this ordinance is dispensed with prior to its final passage, a written or printed copy having been available to the City Council and the public a day prior to its final passage.

Section 4. That City departments are instructed not to issue any permit for development that is inconsistent with this ordinance unless application for such permit was submitted and deemed complete by the City Manager prior to the date the applicable provisions of this ordinance becomes effective.

Section 5. This ordinance shall take effect and be in force on the thirtieth day from and after its passage.

APPROVED: CASEY GWINN, City Attorney

By 
Mary Jo Lanzafame
Deputy City Attorney

MJL:cdk:cfq
09/05/03
03/25/04 COR.COPY
04/09/04 COR.COPY2
05/15/04 COR COPY 3
Or.Dept:Planning
O-2004-118

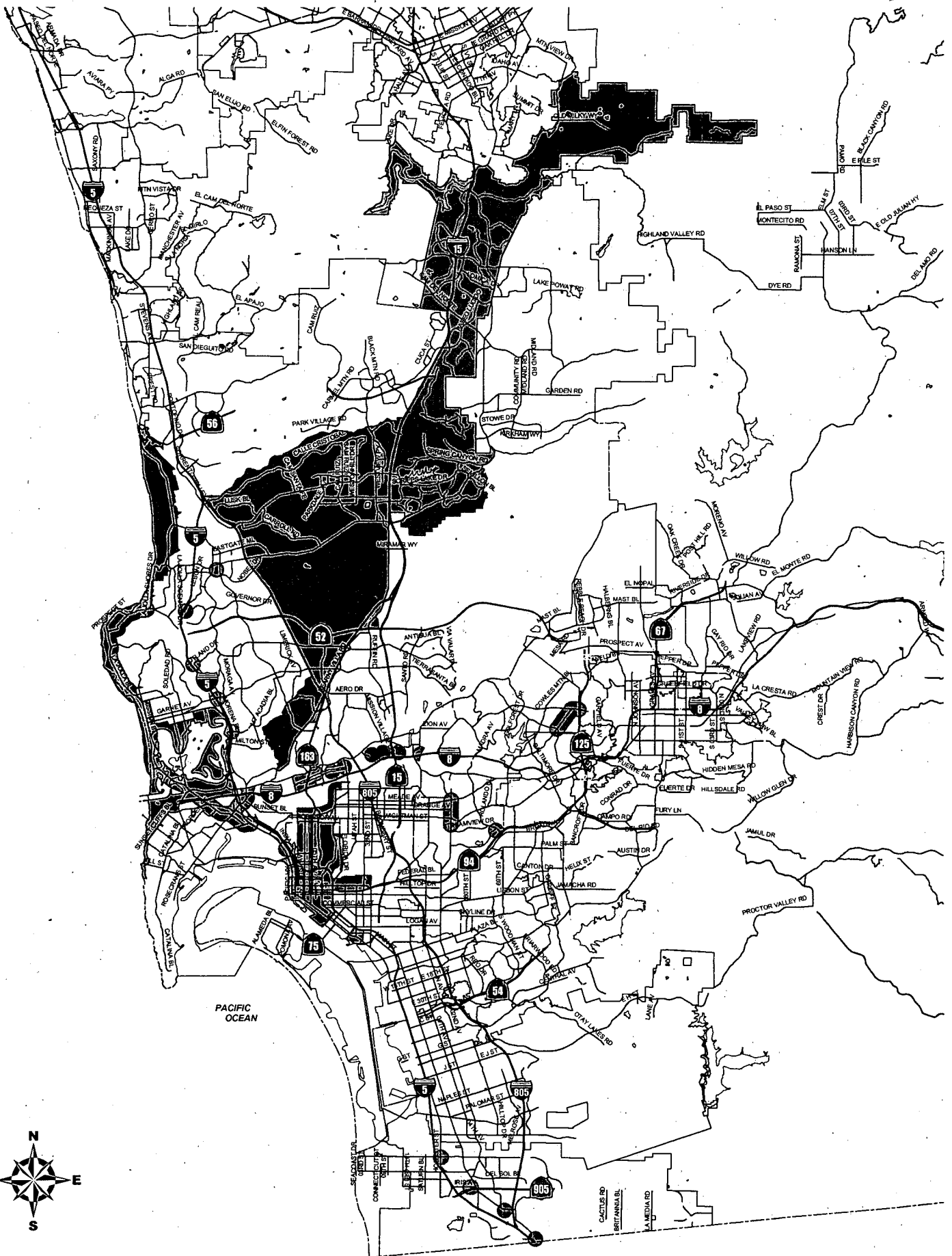


DIAGRAM 132-09A
Residential Tandem Parking

This is a reproduction of Map No. C-922 for illustration purposes only.

Map Document (L:\GIS\PGIS\Community_Project\citywide\c001_001.mxd)
 09/2004 - 10:46:52 AM

0-19288

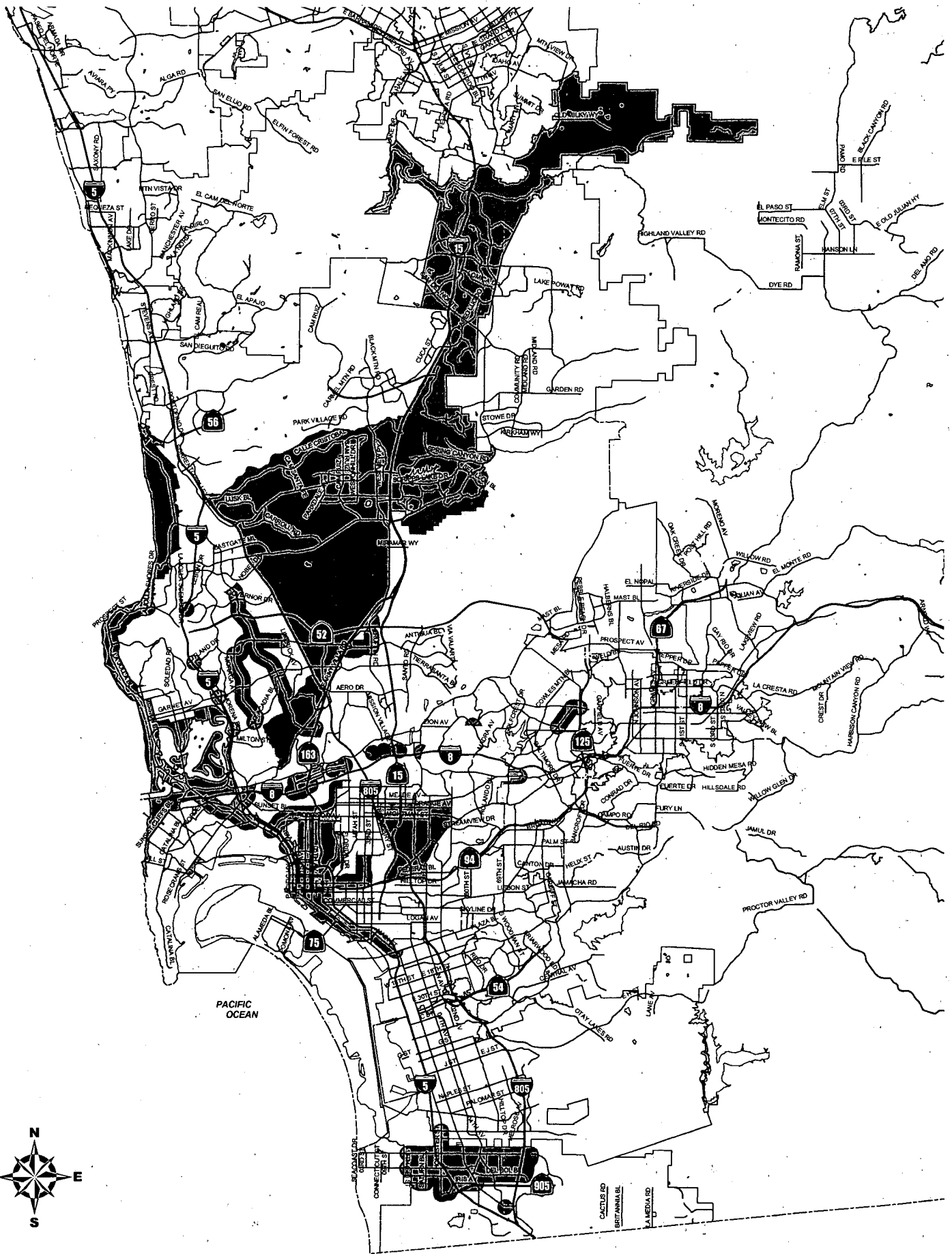


DIAGRAM 132-09B
Residential Tandem Parking

This is a reproduction of Map No. C-903 for illustration purposes only.

Map Document: \\GIS\PGIS\Community_Projects\citywide\c903.mxd
 5/6/2004 - 10:45:52 AM

0-19288

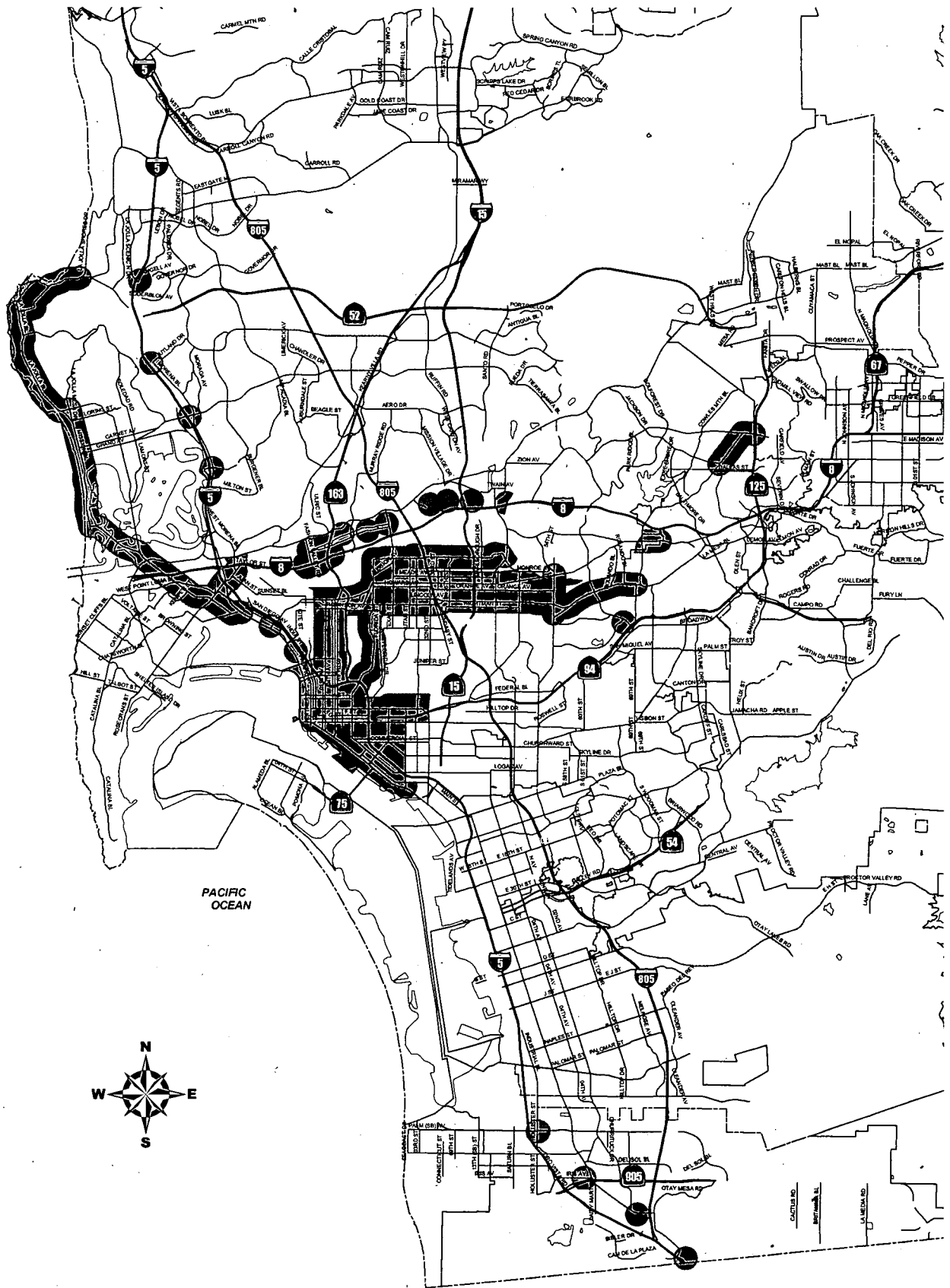


DIAGRAM 132-10A

Transit Area Overlay Zone

This is a reproduction of Map No. C-921 for illustration purposes only.

Map Document: (L:\GIS\POIS\Community_Projects\citywide\c900_2001.mxd)
 12/4/2003 - 8:25:58 AM

0-19288

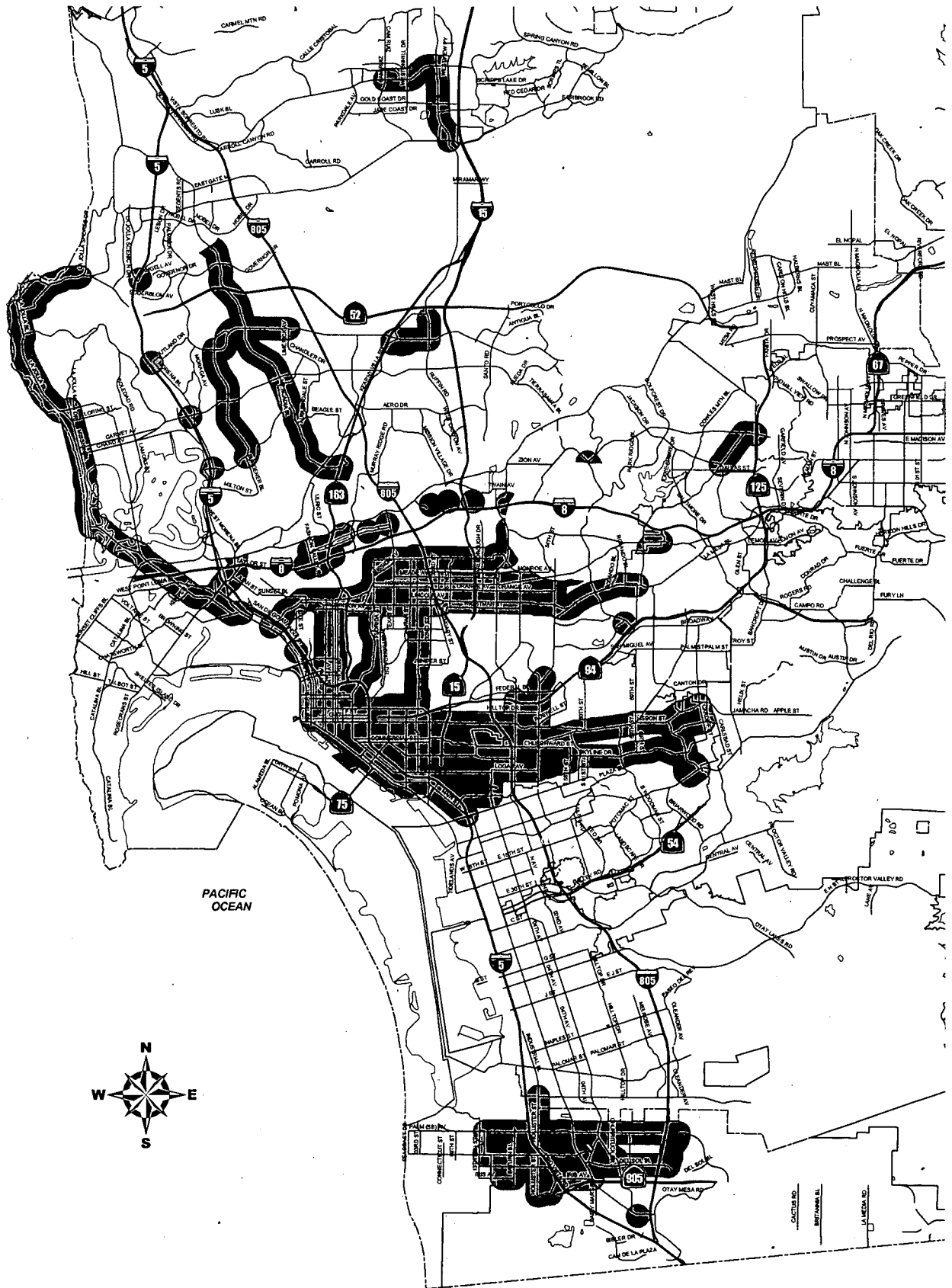


DIAGRAM 132-10B
Transit Area Overlay Zone

This is a reproduction of Map No. C-900 for illustration purposes only.

Map Document: (I:\GIS\PGIS\Community_Projects\citywide\c900_2001.mxd)
 12/4/2003 - 9:25:58 AM

6-19288