

RESOLUTION NUMBER R- 298762

ADOPTED ON JAN 13 2004

WHEREAS, California Streets and Highways Code section 8330 et seq. provides a procedure for the summary vacation of public service easements by City Council resolution where the easement is no longer required; and

WHEREAS, the affected property owner has requested the vacation of a sewer easement in Lots E and F, Block 106 of Horton's Addition, Map 369, to unencumber the property and facilitate development of the site; and

WHEREAS, the City Council finds that:


- (a) there is no present or prospective use for the sewer easement either for which it was originally acquired, or for any other public use of a like nature that can be anticipated; and
- (b) the public will benefit from the vacation through improved utilization of land; and
- (c) the vacation is consistent with the General Plan or an approved Community Plan; and
- (d) the public service easement system for which it was originally acquired will not be detrimentally affected by this vacation; NOW, THEREFORE,

BE IT RESOLVED, by the Council of the City of San Diego, as follows:

1. That the sewer easement, in Lots E and F, Block 106 of Horton's Addition, Map 369, as more particularly described in the legal description marked as Exhibit "A," and shown on Drawing No. 20033-B, marked as Exhibit "B," and on file in the office of the City Clerk as Document Nos. RR-298762-1, and RR-298762-2, which are by this reference incorporated herein and made a part hereof, is ordered vacated.

2. That the City Clerk shall cause a certified copy of this resolution, with attached exhibits, attested by him under seal, to be recorded in the office of the County Recorder.

APPROVED: CASEY GWINN, City Attorney

By 

William W. Witt
Deputy City Attorney

WWW:pev
12/09/03
Or.Dept: DSD
SA: 02-641
W.O:420253
Dwg: 19993-B
R-2004-675

EXHIBIT "A"
SEWER EASEMENT VACATION

LEGAL DESCRIPTION

ALL THAT SEWER EASEMENT RECORDED 9-20-1945 IN BOOK 1918, PAGE 494 OF OFFICIAL RECORDS IN LOTS "E" AND "F" OF BLOCK 106 OF HORTON'S ADDITION, IN THE CITY OF SAN DIEGO, COUNTY OF SAN DIEGO, STATE OF CALIFORNIA, ACCORDING TO MAP THEREOF MADE BY L.L. LOCKLING ON FILE IN THE OFFICE OF THE COUNTY RECORDER OF SAN DIEGO COUNTY, VACATED.

CONTAINS 0.230 ACRES



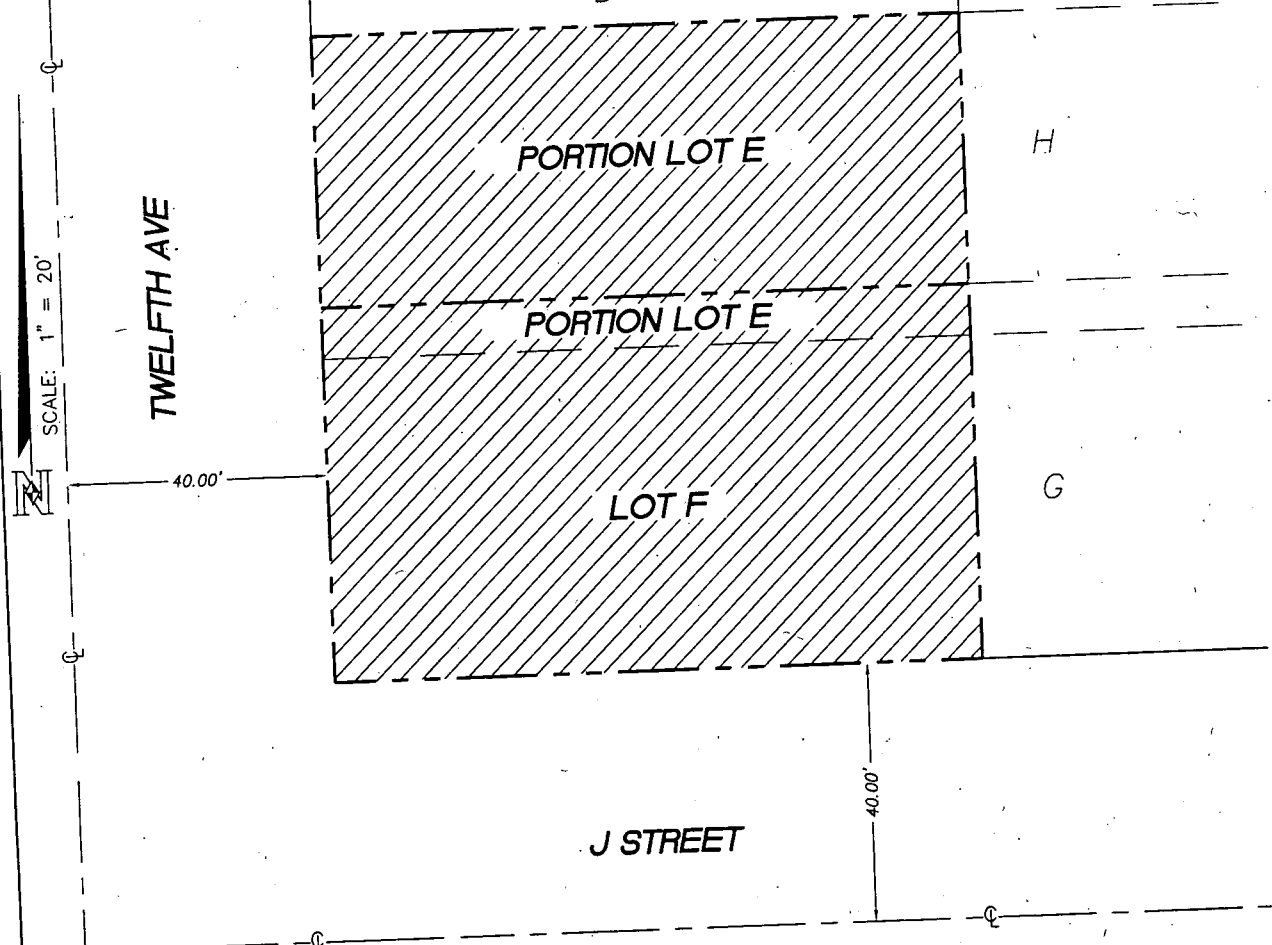
Prepared by: DK Nasland, PLS 5562
My License renews 9-30-2005

101-282.1
JULY 18, 2003

A-02-641
W.O. NO. 420253
DWG. NO. 20033-B

R- 298762

BLOCK 106
 HORTON'S ADDITION
 MAP NO. 369
 D



SCALE: 1" = 20'

TWELFTH AVE

PORTION LOT E

PORTION LOT E

LOT F

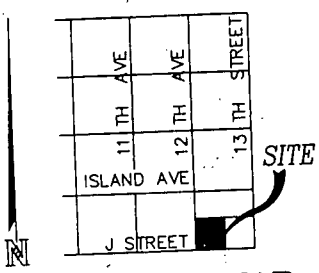
J STREET

LEGEND
 INDICATES SEWER EASEMENT PER DOC. REC. 9-20-1945 IN BOOK 1918, PAGE 494, O.R. VACATED (THE EXACT LOCATION IS NOT DISCLOSED OF RECORD) CONTAINS 0.230 ACRES



--- PARCEL LINE
 - - - LOT LINE

A.P.N.
 535-156-03 AND 04



VICINITY MAP
 NO SCALE

NASLAND ENGINEERING
 CIVIL ENGINEERING • SURVEYING • LAND PLANNING
 4740 Ruffner Street, San Diego, California, 92111 • 858-292-7770
 101-282.1

SEWER EASEMENT VACATION
 LOTS 'E' AND 'F', BLOCK 106
 HORTON'S ADDITION, MAP 369

EXHIBIT B

CITY OF SAN DIEGO, CALIFORNIA SHEET 1 OF 1 SHEET					A. NO. 02-641
FOR CITY ENGINEER					W.O. NO. 420253
DESCRIPTION	BY	APPROVED	DATE	FILMED	1838-6279 CCS 83 COORDINATES
ORIGINAL	MP		7-18-03		198-1719 LAMBERT COORDINATES
STATUS					20033-B

R- 298762