

RESOLUTION NUMBER R- 299428

ADOPTED ON JUL 12 2004

WHEREAS, California Streets and Highways Code section 8330 et seq. provide a procedure for the summary vacation of public service easements by City Council resolution where the easements are no longer required; and

WHEREAS, the affected property owner has requested the vacation of general utility and access easements in Lots 91, 93, 95, 97, 119, 121, 123, 125, 192, 194, 196, 198, 200, 202, 204, 206, 212 and 214 of Amended Map of Black Mountain Ranch Unit 1 Map No. 14307 to unencumber his property and facilitate development of the site; and

WHEREAS, there is no present or prospective use for the general utility and access easements, either for the purpose for which they were originally acquired, or for any other public use of a like nature that can be anticipated; and

WHEREAS, the public will benefit from the vacations through improved utilization of land; and

WHEREAS, the vacations are consistent with the General Plan or an approved Community Plan; and

WHEREAS, the public facility or purpose for which the easements were originally acquired will not be detrimentally affected by this vacation; NOW, THEREFORE,

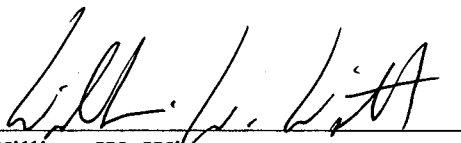
BE IT RESOLVED, by the Council of the City of San Diego, as follows:

1. That the general utility and access easements located within Lots 91, 93, 95, 97, 119, 121, 123, 125, 192, 194, 196, 198, 200, 202, 204, 206, 212 and 214 of Amended Map of

Black Mountain Ranch Unit 1 Map No. 14307, as more particularly described in the legal description marked as Exhibit "A," and as shown on Drawing No. 00082-C, marked as Exhibit "B," and on file in the office of the City Clerk as Document Nos. RR-299428-1, and RR-299428-2, which are by this reference incorporated herein and made a part hereof, is ordered vacated.

2. That the City Clerk shall cause a certified copy of this resolution, with attached exhibits, attested by him under seal, to be recorded in the office of the County Recorder.

APPROVED: CASEY GWINN, City Attorney

By   
William W. Witt  
Deputy City Attorney

WWW:pev  
06/22/04  
Or.Dept: DSD  
W.O. 990905  
Drawing No. 00082-C  
R-2005-3

# EXHIBIT A

J-13572

## GENERAL UTILITY AND ACCESS EASEMENTS ABANDONED

All of those portions of General Utility and Access Easements granted over portions of Lots 91, 93, 95, 97, 119, 121, 123, 125, 192, 194, 196, 198, 200, 202, 204, 206, 212, and 214 of Amended Map of Black Mountain Ranch Unit No. 1, in the City of San Diego, County of San Diego, State of California, according to Map thereof No. 14307, filed in the Office of the Recorder of San Diego County, November 16, 2001, said portions being more particularly described as follows:

### Parcel "A"

Portions of certain General Utility and Access Easements granted over said Lots 91 and 93 as shown on said Map No. 14307.

Containing 0.041 acres, more or less.

### Parcel "B"

Portions of certain General Utility and Access Easements granted over said Lots 95 and 97 as shown on said Map No. 14307.

Containing 0.041 acres, more or less.

### Parcel "C"

All of those certain General Utility and Access Easements granted over said Lots 119 and 121 of said Map No. 14307.

Containing 0.120 acres, more or less.

### Parcel "D"

All of those certain General Utility and Access Easements granted over said Lots 123 and 125 of said Map No. 14307.

Containing 0.059 acres, more or less.

Parcel "E"

All of those certain General Utility and Access Easements granted over said Lots 196 and 198 of said Map No. 14307.

Containing 0.041 acres, more or less.

Parcel "F"

All of those certain General Utility and Access Easements granted over said Lots 192 and 194 of said Map No. 14307.

Containing 0.052 acres, more or less.

Parcel "G"

Portions of certain General Utility and Access Easements granted over said Lots 200 and 202 as shown on said Map No. 14307.

Containing 0.041 acres, more or less.

Parcel "H"

All of those certain General Utility and Access Easements granted over said Lots 204 and 206 of said Map No. 14307.

Containing 0.071 acres, more or less.

Parcel "J"

All of those certain General Utility and Access Easements granted over said Lots 212 and 214 of said Map No. 14307.

Containing 0.067 acres, more or less.

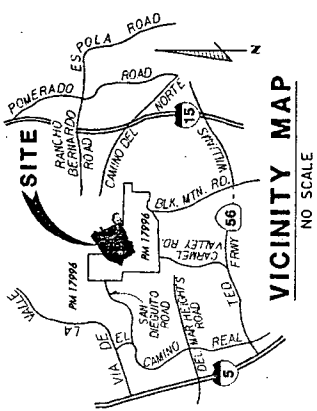
*Patrick A. McMichael* 4-19-04  
Patrick A. McMichael L.S. 6187

W.O. No.: 990905  
DWG. No.: 00082-C

Jb/13572\_005



# EXHIBIT B



- LEGEND**
- INDICATES GENERAL UTILITY AND ACCESS EASEMENTS PER MAP NO. 14307
  - PARCEL 1\* - 0.041 ACRES
  - PARCEL 2\* - 0.041 ACRES
  - PARCEL 3\* - 0.041 ACRES
  - PARCEL 4\* - 0.041 ACRES
  - PARCEL 5\* - 0.041 ACRES
  - PARCEL 6\* - 0.041 ACRES
  - PARCEL 7\* - 0.041 ACRES
  - PARCEL 8\* - 0.041 ACRES
  - PARCEL 9\* - 0.041 ACRES
  - PARCEL 10\* - 0.041 ACRES
  - INDICATES LOT AMENDED PER MAP NO. 14307

**REFERENCE DRAWINGS**  
MAP 14684-14007

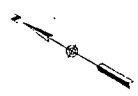


**SURVEYOR OF WORK**  
PATRICK A. MCMICHAEL, LS 6187 DATE 5-2-2008

J-14572

GENERAL UTILITY AND ACCESS EASEMENTS VACATED IN LOTS 91, 92, 93, 97, 119, 121, 123, 125, 126, 128, 134, 135, 138, 200, 202, 204, 206, 212, & 214 OF AMENDED MAP OF BLACK MOUNTAIN RANCH UNIT 1, MAP NO. 14307

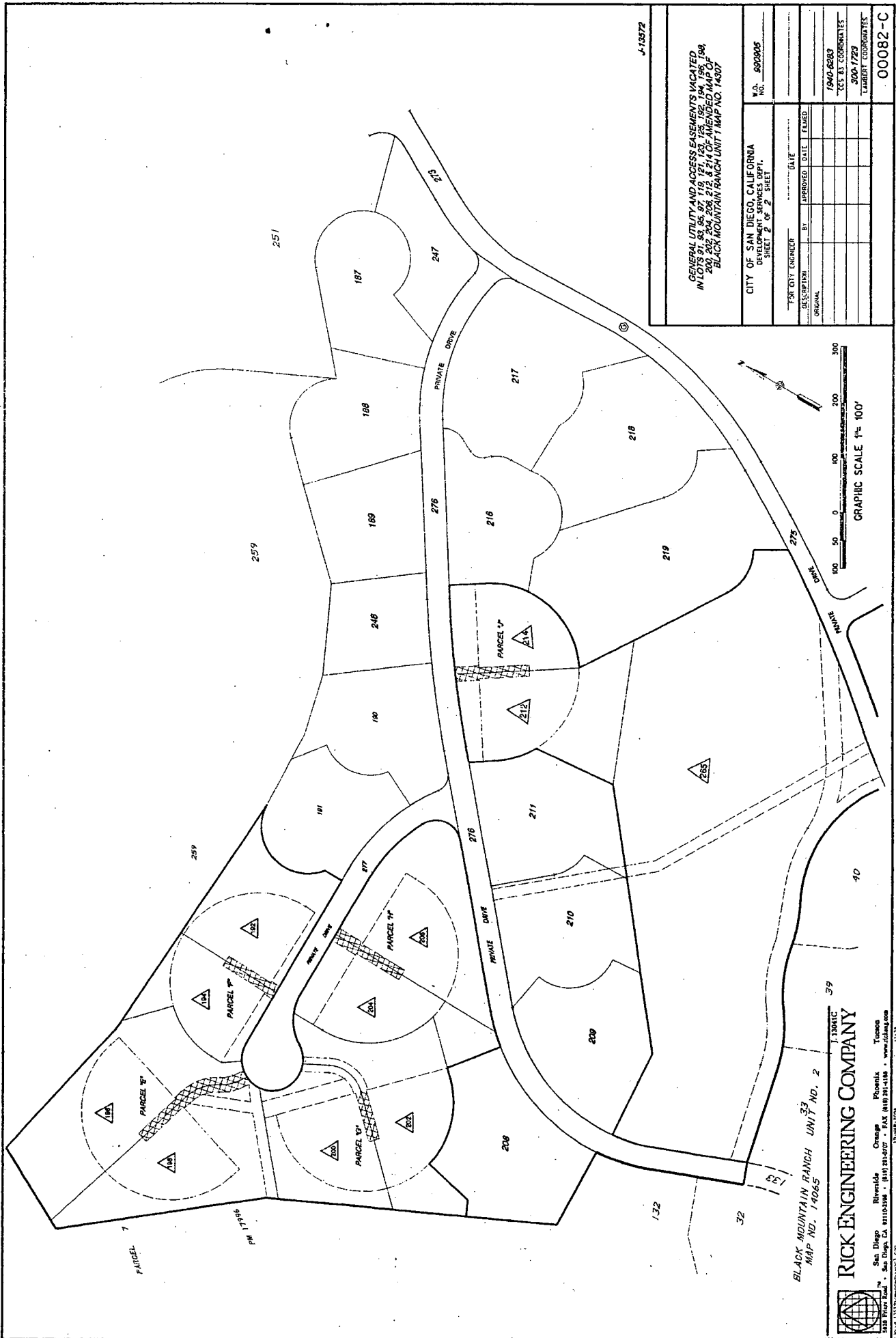
CITY OF SAN DIEGO, CALIFORNIA ENGINEERING DEPARTMENT SHEET 1 OF 2 SHEET		NO. 880909 NO. 880909
DATE	DATE	1940-6283 CCS 83 COORDINATES
BY	APPROVED	300-1723 LIBERTY COORDINATES
DESCRIPTION	DATE	00082-C
ORIGINAL		



GRAPHIC SCALE 1" = 100'  
0 50 100 200 300

**RICK ENGINEERING COMPANY**  
11301C  
San Diego Riverside Orange Phoenix Tucson  
520 Third Road • San Diego, CA 92110-5198 • (619) 291-0707 • FAX (619) 291-1185 • www.rickeng.com  
© 2008 Rick Engineering Company, Inc.

R-299428



4-10572

GENERAL UTILITY AND ACCESS EASEMENTS VACATED  
 IN LOTS 91, 93, 95, 97, 119, 121, 123, 125, 192, 194, 195, 198,  
 200, 202, 204, 206, 212, & 214 OF AMENDED MAP OF  
 BLACK MOUNTAIN RANCH UNIT # MAP NO. 14067

CITY OF SAN DIEGO, CALIFORNIA DEVELOPMENT SERVICES DEPT. SHEET 2 OF 2 SHEET		W.D. NO. 600005
DATE ENGINEERED	BY	APPROVED DATE
DESCRIPTION	DATE	DATE
ORIGINAL		
		1940-8283
		"C.S. COPIES"
		200-1729
		LIBERTY CORPORATES
		LIBERTY CORPORATES
		00082-C

BLACK MOUNTAIN RANCH UNIT NO. 2  
 MAP NO. 14065

**RICK ENGINEERING COMPANY**  
 San Diego Riverside Omaha Phoenix Tucson  
 328 River Road • San Diego, CA 92108-1198 • (619) 291-0707 • FAX (619) 291-4158 • www.riclag.com  
 19 MAR 2009 11:33

R-299428