

RESOLUTION NUMBER R- 300551

ADOPTED ON JUN 20 2005

WHEREAS, California Streets and Highway Code section 8333(c) provides for the summary vacation of utility easements by City Council where the easements to be vacated have been superceded by relocation and there are no other public facilities located within the easement; and

WHEREAS, the affected property owner has requested the vacation of general utility and access easements in Lots 5, 9, 17, 21, 41, 49 and 53 of Amended Map of Black Mountain Ranch Unit 1 Map No. 14307, to unencumber his property and facilitate development of the site; and

WHEREAS, the general utility and access easements listed above have been superceded by relocation and there are no other public facilities located within the easements; and

WHEREAS, the City Council finds that:

(a) there is no present or prospective use for the general utility and access easements, either for the purpose for which they were originally acquired, or for any other public use of a like nature that can be anticipated;

(b) the public will benefit from the vacations through improved utilization of land;

(c) the vacations are consistent with the General Plan or an approved Community Plan; and

(d) the public facility or purpose for which the easements were originally acquired will not be detrimentally affected by this vacation; NOW, THEREFORE,

BE IT RESOLVED, by Council of the City of San Diego, as follows:

1. That the general utility and access easements located within Lots 5, 9, 17, 21, 41, 49 and 53 of Amended Map of Black Mountain Ranch Unit 1 Map No. 14307 as more particularly

described in the legal description marked as Exhibit "A" and as shown on Drawing No. 00056-C, marked as Exhibit "B" and on file in the office of the City Clerk as Document

Nos. RR- 300551-1, and RR- 300551-2 which are by this reference incorporated herein and made a part hereof, are ordered vacated.

2. That the City Clerk shall cause a certified copy of this resolution, with attached exhibits, attested by him under seal, to be recorded in the Office of the County Recorder.

APPROVED: MICHAEL J. AGUIRRE, City Attorney

By

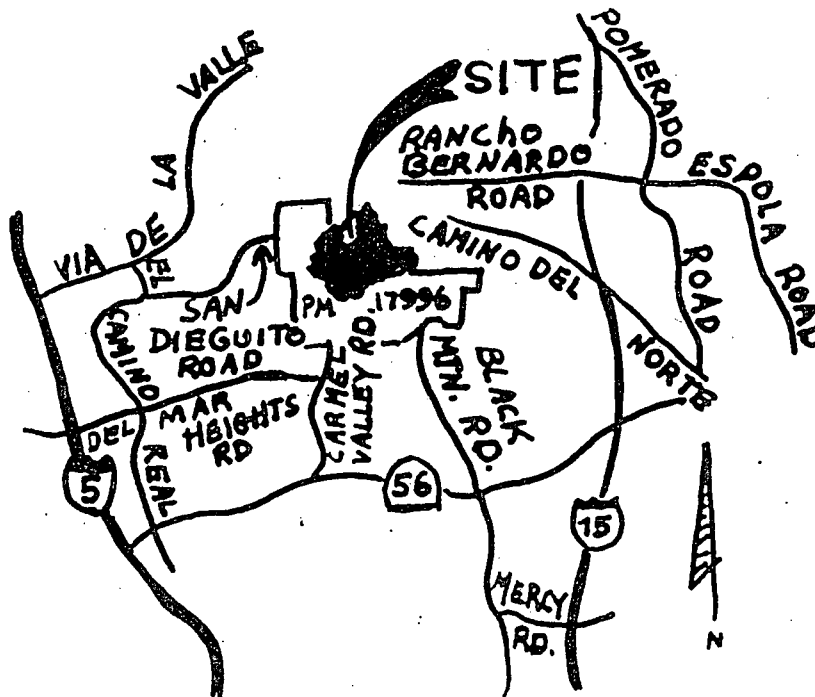
  
\_\_\_\_\_  
David Miller  
Deputy City Attorney

DM:jls  
06/09/05  
Or.Dept:DSD  
W.O. 990905  
Drawing No. 00056-C  
R-2005-1315  
MMS #2104

# GENERAL UTILITY AND

## ACCESS EASEMENT

### VACATIONS



VICINITY MAP  
NO SCALE

W.O.# 423093 PTS 44680  
W.O. # 990905

R-300551

GENERAL UTILITY AND ACCESS EASEMENTS  
VACATED

All of those certain General Utility and Access Easements granted over portions of Lots 5, 9, 17, 21, 41, 49, and 53 of Amended Map of Black Mountain Ranch Unit No. 1, in the City of San Diego, County of San Diego, State of California, according to Map thereof No. 14307, filed in the Office of the Recorder of San Diego County, November 16, 2001, said easements being more particularly described as follows:

Parcel "A"

All of that certain General Utility and Access Easement granted over said Lot 5 of said Map No. 14307.

Containing 0.069 acres, more or less.

Parcel "B"

All of that certain General Utility and Access Easement granted over said Lot 9 of said Map No. 14307.

Containing 0.049 acres, more or less.

Parcel "C"

All of that certain General Utility and Access Easement granted over said Lot 17 of said Map No. 14307.

Containing 0.042 acres, more or less.

Parcel "D"

All of that certain General Utility and Access Easement granted over said Lot 21 of said Map No. 14307.

Containing 0.077 acres, more or less.

Parcel "E"

All of that certain General Utility and Access Easement granted over said Lot 41 of said Map No. 14307.

Containing 0.062 acres, more or less.

Parcel "F"

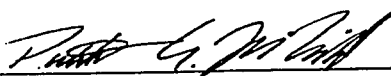
All of that certain General Utility and Access Easement granted over said Lot 49 of said Map No. 14307.

Containing 0.052 acres, more or less.

Parcel "G"

All of that certain General Utility and Access Easement granted over said Lot 53 of said Map No. 14307.

Containing 0.062 acres, more or less.

 5-17-05  
Patrick A. McMichael L.S. 6187

W.O. No.: 990905  
DWG. No.: 00056-C



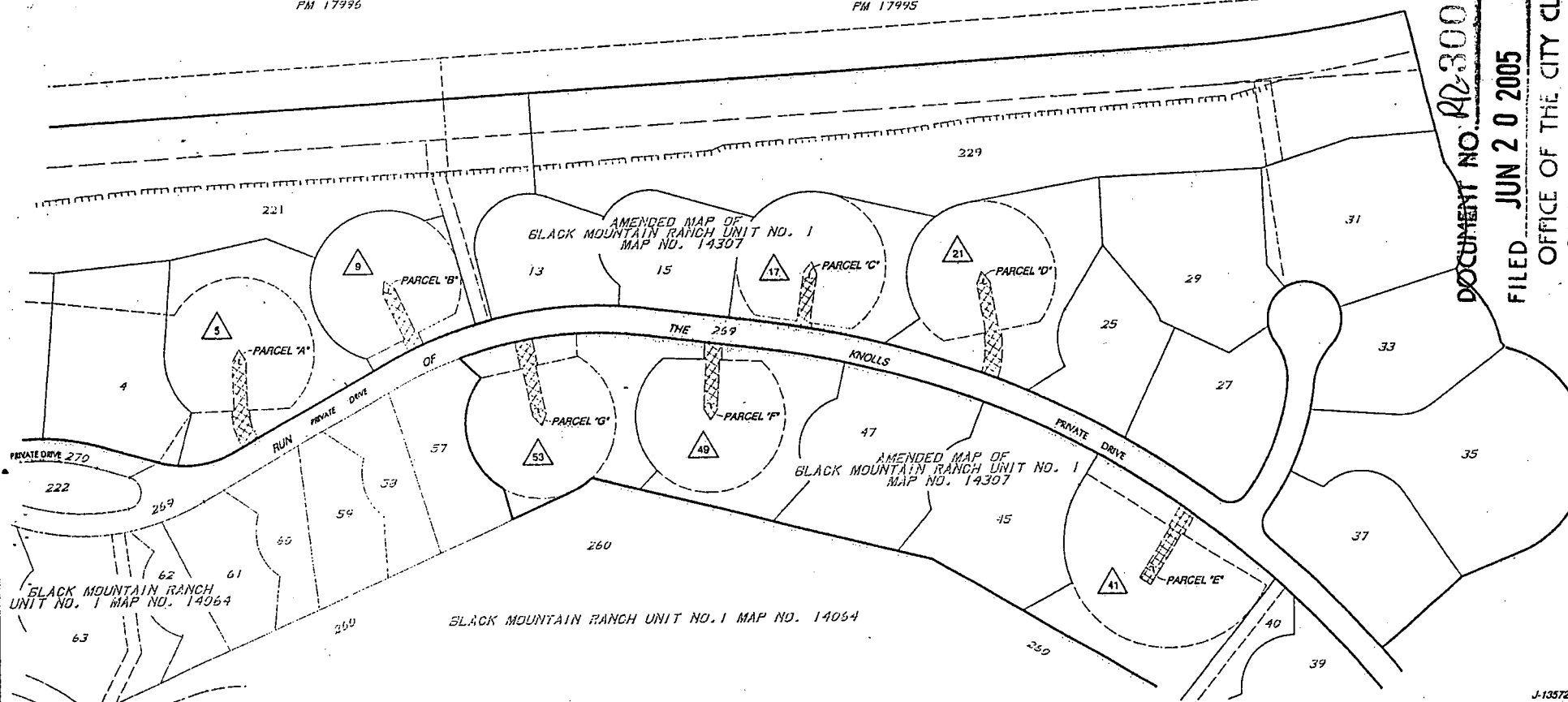
Jb/13572\_006

PARCEL 6  
FM 17945

DOCUMENT NO. R2300551-2

FILED JUN 20 2005

OFFICE OF THE CITY CLERK  
SAN DIEGO, CALIFORNIA



J-13572

INDICATES GENERAL UTILITY AND ACCESS  
EASEMENTS PER MAP NO. 14064, VACATED.

PARCEL "A" - 0.069 ACRES  
PARCEL "B" - 0.049 ACRES  
PARCEL "C" - 0.042 ACRES  
PARCEL "D" - 0.077 ACRES  
PARCEL "E" - 0.062 ACRES  
PARCEL "F" - 0.052 ACRES  
PARCEL "G" - 0.062 ACRES

MAP NO. 14064, MAP NO. 14307;  
DWG. NO. 30287-6-D THRU -9-D, -38-D THRU -40-D, -50-D;  
DWG. NO. 30150-7-D THRU -9-D

SURVEYOR OF WORK

PATRICK A. MCMICHAEL, LS 6187      DATE



**GENERAL UTILITY AND ACCESS EASEMENTS ABANDONED  
IN LOTS 5, 9, 17-21, 41, 49, & 53 OF AMENDED MAP OF  
BLACK MOUNTAIN RANCH UNIT 1 MAP NO. 14307**

CITY OF SAN DIEGO, CALIFORNIA  
DEVELOPMENT SERVICES DEPT.  
SHEET 7 OF 7 SHEET

W.O. 990905

NO. \_\_\_\_\_

A01-659

FOR CITY ENGINEER \_\_\_\_\_ DATE \_\_\_\_\_

DESCRIPTION	DT	APPROVED	DATE	FILMED
-------------	----	----------	------	--------

65-3614-1001	61	417-1001	1-1	1-1
65-3614-1002	62	417-1002	1-1	1-1
65-3614-1003	63	417-1003	1-1	1-1
65-3614-1004	64	417-1004	1-1	1-1
65-3614-1005	65	417-1005	1-1	1-1
65-3614-1006	66	417-1006	1-1	1-1
65-3614-1007	67	417-1007	1-1	1-1
65-3614-1008	68	417-1008	1-1	1-1
65-3614-1009	69	417-1009	1-1	1-1
65-3614-1010	70	417-1010	1-1	1-1
65-3614-1011	71	417-1011	1-1	1-1
65-3614-1012	72	417-1012	1-1	1-1
65-3614-1013	73	417-1013	1-1	1-1
65-3614-1014	74	417-1014	1-1	1-1
65-3614-1015	75	417-1015	1-1	1-1
65-3614-1016	76	417-1016	1-1	1-1
65-3614-1017	77	417-1017	1-1	1-1
65-3614-1018	78	417-1018	1-1	1-1
65-3614-1019	79	417-1019	1-1	1-1
65-3614-1020	80	417-1020	1-1	1-1
65-3614-1021	81	417-1021	1-1	1-1
65-3614-1022	82	417-1022	1-1	1-1
65-3614-1023	83	417-1023	1-1	1-1
65-3614-1024	84	417-1024	1-1	1-1
65-3614-1025	85	417-1025	1-1	1-1
65-3614-1026	86	417-1026	1-1	1-1
65-3614-1027	87	417-1027	1-1	1-1
65-3614-1028	88	417-1028	1-1	1-1
65-3614-1029	89	417-1029	1-1	1-1
65-3614-1030	90	417-1030	1-1	1-1
65-3614-1031	91	417-1031	1-1	1-1
65-3614-1032	92	417-1032	1-1	1-1
65-3614-1033	93	417-1033	1-1	1-1
65-3614-1034	94	417-1034	1-1	1-1
65-3614-1035	95	417-1035	1-1	1-1
65-3614-1036	96	417-1036	1-1	1-1
65-3614-1037	97	417-1037	1-1	1-1
65-3614-1038	98	417-1038	1-1	1-1
65-3614-1039	99	417-1039	1-1	1-1
65-3614-1040	100	417-1040	1-1	1-1
65-3614-1041	101	417-1041	1-1	1-1
65-3614-1042	102	417-1042	1-1	1-1
65-3614-1043	103	417-1043	1-1	1-1
65-3614-1044	104	417-1044	1-1	1-1
65-3614-1045	105	417-1045	1-1	1-1
65-3614-1046	106	417-1046	1-1	1-1
65-3614-1047	107	417-1047	1-1	1-1
65-3614-1048	108	417-1048	1-1	1-1
65-3614-1049	109	417-1049	1-1	1-1
65-3614-1050	110	417-1050	1-1	1-1
65-3614-1051	111	417-1051	1-1	1-1
65-3614-1052	112	417-1052	1-1	1-1
65-3614-1053	113	417-1053	1-1	1-1
65-3614-1054	114	417-1054	1-1	1-1
65-3614-1055	115	417-1055	1-1	1-1
65-3614-1056	116	417-1056	1-1	1-1
65-3614-1057	117	417-1057	1-1	1-1
65-3614-1058	118	417-1058	1-1	1-1
65-3614-1059	119	417-1059	1-1	1-1
65-3614-1060	120	417-1060	1-1	1-1
65-3614-1061	121	417-1061	1-1	1-1
65-3614-1062	122	417-1062	1-1	1-1
65-3614-1063	123	417-1		

ORIGINAL

[illegible]

--	--	--	--	--


--	--	--	--	--

1940-5287

7340-0200  
LCS 83 LIXONHAIRES

300-1332

300-1723  
ADMINISTRATIVE SERVICES

LABOUR COORDINATES

00056-C



**RICK ENGINEERING COMPANY**

J. 13041C

San Diego Riverside Orange Phoenix Tucson  
5620 Friar Road • San Diego, CA 92110-2598 • (619) 291-0707 • FAX (619) 291-4163 • [www.richeng.com](http://www.richeng.com)