

RESOLUTION NUMBER R- 303769

DATE OF FINAL PASSAGE MAY 30 2008

RESOLUTION CALLING A PUBLIC HEARING TO DETERMINE WHETHER THE PUBLIC HEALTH, SAFETY OR GENERAL WELFARE REQUIRES THE FORMATION OF ALTADENA AVENUE UNDERGROUND UTILITY DISTRICT IN THE MID-CITY, CITY-HEIGHTS COMMUNITY PLANNING AREA.

WHEREAS, Chapter VI, Article 1, Division 5 of the San Diego Municipal Code establishes a procedure for the creation of underground utility districts and requires as an initial step in such procedure the holding of a public hearing to determine whether the public health, safety or general welfare requires removal of poles, overhead wires and associated structures and the underground installation of wires and facilities for supplying electric, communication, community antenna television or similar or associated service in any such district; and

WHEREAS, Council Policy 600-8, "Underground Conversion of Utility Lines by Utility Company" defines the Council Policy for undergrounding utilities; and

WHEREAS, in accordance with Chapter VI, Article 1, Division 5 of the San Diego Municipal Code and Council Policy 600-8, it has been recommended that the following underground utility district [District] be formed:

- Lots 1 through 4, the Easterly half of lots 5 through 12 & Lots 13 through 23 of Map of FAIRMOUNT ADD RESUBDIVISION BLKS 1-12, Subdivision Map No. 1347.
- Parcel A of Parcel Map 290.
- Lots 11 & 18 through 20 in Block F; the Westerly 83 feet of Lots 1 & 2, Lots 3 through 21, in Block G of Map of OAK PARK, Subdivision Map No. 1732.
- Portion Lot 9, Lot 22, Lots 33 through 36, Lots 42 through 45, Lots 74 through 80, Lots 99 through 111, portion Lot 113, Lot 114 & portion 115 of Map of OAK PARK ANNEX, Subdivision Map No. 1764.

- Lots 1 through 5 of Map ALTADENA HEIGHTS, Subdivision Map No. 3505.
- Lots 1 through 4 of Map JACARANDA HEIGHTS, Subdivision Map No. 3693.
- Lot 2, Lots 4 through 16 of Map of RIDGEVIEW ACRES UNIT NO. 1, Subdivision Map No. 4136.
- Lots 17 through 40 & 42 through 46, 58 & 59 of Map of RIDGEVIEW ACRES UNIT NO. 2, Subdivision Map No. 4296.
- Lot 1 of Map ROBERTS HEIGHTS, Subdivision Map No. 5358.
- Parcels 1 through 3 of Parcel Map 18825.
- Lots 1 through 10 of RIDGEVIEW HEIGHTS RESUBDIVISION, Subdivision Map No. 5912.
- Portion Patent Book 1, Page 345 of RANCHO MISSION SAN DIEGO
- Parcel 1 of Record Of Survey 6063.

Said district shall also include the following public rights of way:

- Winona Ave. from its intersection with University Ave. South to a line +/- 120 feet South of Wightman St.
- Altadena Ave.
- 50th St. between a line +/- 100 North of Wightman St. to a line +/- 100 feet South of Wightman St.
- Wightman St. between a line extending Northeasterly from the Northeastern corner of 5071 Wightman St. to its intersection with Winona St.
- Landis St. between a line from the Southeastern corner of 5104 Landis St. and the Northeastern corner of 5129 Landis St. to its intersection with Altadena Ave.
- Sterling Ct. between a line +/- 80 feet East of Altadena Ave. to a line +/- 50 feet West of Altadena Ave.
- Corliss St. between a line extending Northeasterly from the Northerly corner of 3004 Altadena Dr. to its intersection with Altadena Ave.
- Loris St. between a line extending Northerly from the Northerly corner of 3368 Altadena Dr. to its intersection with Altadena Ave.

WHEREAS, Exhibit Attachment ALTADENA-WIGHTMAN-WINONA UNDERGROUND UTILITY DISTRICT (Sheet 1 of 1), Map, and Exhibit Attachment ALTADENA-WIGHTMAN-WINONA UNDERGROUND UTILITY DISTRICT (Pages 1 of 2), Legal Description, depicts the above District with greater specificity; NOW, THEREFORE,


BE IT RESOLVED, by the Council of the City of San Diego, as follows:

1. Notice is hereby given that a public hearing will be held by the Council of the City of San Diego on JUN 17 2008, at the hour of 2:00 p.m. in the Council Chambers of the City Administration Building, 202 C Street, San Diego, California, to determine whether the public health, safety or general welfare requires the removal of poles, overhead wires and associated overhead structures and the underground installation of wires and facilities for supplying electric, communication, community antenna television or similar or associated service in the District described above.

2. At such hearing all persons interested shall be given an opportunity to be heard and said hearing may be continued from time to time as may be determined by the City Council. The decision of the City Council as to the formation of the District as described above shall be final and conclusive.

3. The City Clerk shall notify all affected persons as defined in Chapter VI, Article 1, Division 5 of the San Diego Municipal Code and each utility company concerned of the time and place of the hearing by following the procedure set forth in Chapter VI, Article 1, Division 5 of the San Diego Municipal Code.

APPROVED: MICHAEL J. AGUIRRE, City Attorney

By   
Ryan Kohut  
Deputy City Attorney

RK:cfq  
04/16/08  
Or.Dept:E&CP  
R-2008-937

I hereby certify that the foregoing Resolution was passed by the Council of the City of San Diego, at this meeting of MAY 27 2008.

ELIZABETH S. MALAND  
City Clerk

By   
Deputy City Clerk

Approved: 5-30-08  
(date)

  
JERRY SANDERS, Mayor

Vetoed: \_\_\_\_\_  
(date)

\_\_\_\_\_  
JERRY SANDERS, Mayor

**GENERAL BOUNDARY DESCRIPTION FOR THE  
ALTADENA-WIGHTMAN-WINONA  
UNDERGROUND UTILITY DISTRICT**

The ALTADENA-WIGHTMAN-WINONA UNDERGROUND UTILITY DISTRICT shall be established to include the following described parcels:

Lots 1 through 4, the Easterly half of lots 5 through 12 & Lots 13 through 23 of Map of FAIRMOUNT ADD RESUBDIVISION BLKS 1-12, Subdivision Map No. 1347.

Parcel A of Parcel Map 290.

Lots 11 & 18 through 20 in Block F; the Westerly 83 feet of Lots 1 & 2, Lots 3 through 21, in Block G of Map of OAK PARK, Subdivision Map No. 1732.

Portion Lot 9, Lot 22, Lots 33 through 36, Lots 42 through 45, Lots 74 through 80, Lots 99 through 111, portion Lot 113, Lot 114 & portion 115 of Map of OAK PARK ANNEX, Subdivision Map No. 1764.

Lots 1 through 5 of Map ALTADENA HEIGHTS, Subdivision Map No. 3505.

Lots 1 through 4 of Map JACARANDA HEIGHTS, Subdivision Map No. 3693.

Lot 2, Lots 4 through 16 of Map of RIDGEVIEW ACRES UNIT NO. 1, Subdivision Map No. 4136.

Lots 17 through 40 & 42 through 46, 58 & 59 of Map of RIDGEVIEW ACRES UNIT NO. 2, Subdivision Map No. 4296.

Lot 1 of Map ROBERTS HEIGHTS, Subdivision Map No. 5358.

Parcels 1 through 3 of Parcel Map 18825.

Lots 1 through 10 of RIDGEVIEW HEIGHTS RESUBDIVISION, Subdivision Map No. 5912.

Portion Patent Book 1, Page 345 of RANCHO MISSION SAN DIEGO

Parcel 1 of Record Of Survey 6063.

*R*-303769

Said district shall also include the following public rights of way:

Winona Ave. from its intersection with University Ave. South to a line +/- 120 feet South of Wightman St.

Altadena Ave.

50th St. between a line +/- 100 North of Wightman St. to a line +/- 100 feet South of Wightman St.

Wightman St. between a line extending Northeasterly from the Northeastern corner of 5071 Wightman St. to its intersection with Winona St.

Landis St. between a line from the Southeastern corner of 5104 Landis St. and the Northeastern corner of 5129 Landis St. to its intersection with Altadena Ave.

Sterling Ct. between a line +/- 80 feet East of Altadena Ave. to a line +/- 50 feet West of Altadena Ave.

Corliss St. between a line extending Northeasterly from the Northerly corner of 3004 Altadena Dr. to its intersection with Altadena Ave.

Loris St. between a line extending Northerly from the Northerly corner of 3368 Altadena Dr. to its intersection with Altadena Ave.







R- 303769

# ALTADENA - WIGHTMAN - WINONA UNDERGROUND UTILITY DISTRICT



ENGINEERING & CAPITAL PROJECTS

### LEGEND

-  PROJECT BOUNDARY
-  PARCELS
-  PROPOSED STREET LIGHTS
-  ASSESSOR'S BOOK & PAGE NO
-  ASSESSOR'S PARCEL NO
-  ADDRESS

### VICINITY MAP



### ALTADENA - WIGHTMAN - WINONA UNDERGROUND UTILITY DISTRICT

CITY OF SAN DIEGO CALIFORNIA  
ENGINEERING AND CAPITAL PROJECTS DEPARTMENT  
SHEET 1 OF 1 SHEET

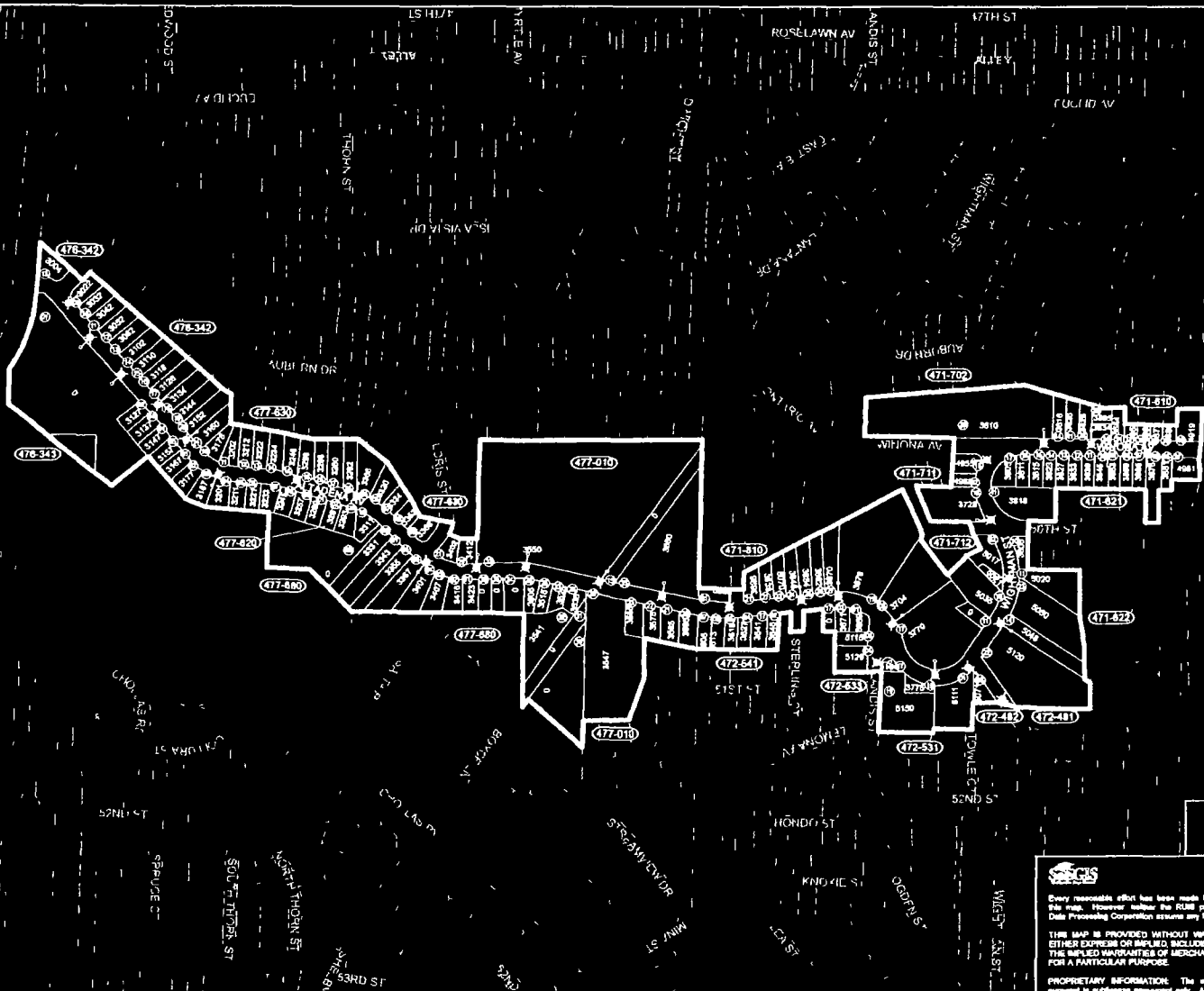
REVISION	DATE	BY	APPROVED	DATE	PROJECT NAME
1	11/22/05	AMM			33818-1-D
					210-1740 LIGHTING CONSULTANT
					33818-1-D



**CAUTION**  
Every reasonable effort has been made to ensure the accuracy of this map. However, neither the RLM nor the City of San Diego Date Processing Corporation assumes any liability for errors in use.

**THIS MAP IS PROVIDED WITHOUT WARRANTY OF ANY KIND EITHER EXPRESS OR IMPLIED, INCLUDING BUT NOT LIMITED TO THE IMPLIED WARRANTIES OF MERCHANTABILITY AND FITNESS FOR A PARTICULAR PURPOSE.**

**PROPRIETARY INFORMATION:** The use of this information is permitted in accordance with the agreement only. Any resale or reuse of the information is prohibited, except in accordance with such marketing agreements.



R-303769