

RESOLUTION NUMBER R- 306560

DATE OF FINAL PASSAGE JAN 28 2011

A RESOLUTION ESTABLISHING AN UNDERGROUND UTILITY DISTRICT FOR RESIDENTIAL PROJECT BLOCK 6DD (BAY HO 3) FINANCED THROUGH THE CITY OF SAN DIEGO UNDERGROUNDING SURCHARGE FUND.

WHEREAS, by Resolution No. R- 306460, a public hearing was called for on DEC 07 2010, 2009, at the hour of 10:00 a.m. in the Council Chambers of the City Administration Building, 202 C Street, San Diego, California, to determine whether the public health, safety, or general welfare requires the removal of poles, overhead wires, and associated structures and the underground installation of wires and facilities for supplying electric, communication, community antenna television or similar or associated service within certain areas of the City of San Diego more particularly described as follows [the District]:

- Lots 1 through 30 of MAP 7649 – VISTA BAY HO
- Lots 349 through 373, Portion of Lots 373 & 374, Lots 375 through 403 of MAP 5937 – HARBORVIEW HTS UNIT NO. 6
- Lot 1 of MAP 8046 – MORENA INDUSTRIAL PARK
- Lot 1 of MAP 9314 – SHADOW HILL CONDOMINIUMS
- Lot 1 of MAP 8995 – BAY HO CONDOMINIUMS
- Lot 1 of MAP 8994 – BAY VIEW TERRACE CONDOMINIUMS
- Lot 217 of MAP 5723 – HARBORVIEW HTS UNIT NO. 7
- Lots 70 through 152 of MAP 5936 - HARBORVIEW HTS UNIT NO. 3 – LOTS 70-152
- Lots 289 through 296 AND Lots 312 through 330 of MAP 5815 - HARBORVIEW HTS UNIT NO. 5 – LOTS 289-296, 312-330

- Lots 282 through 288, Lots 297 through 311, AND Lots 331 through 348 of MAP 5815 – HARBORVIEW HTS UNIT NO. 5 – LOTS 282-288, 297-311, 331-348
- Lots 14 through 27, AND Lots 42 through 65 of MAP 5423 – HARBORVIEW HTS UNIT NO. 2 – LOTS 14-27, 42-65
- Lots 1 through 13, Lots 28 through 41, AND Lots 66 through 69 of MAP 5423 – HARBORVIEW HTS UNIT NO. 5 – LOTS 1-13, 28-41, 66-69
- Lots 225 through 245 of MAP 5776 – HARBORVIEW HTS UNIT NO. 4 – LOTS 225-245
- Lots 246 through 281 of MAP 5776 – HARBORVIEW HTS UNIT NO. 4 – LOTS 246-281
- Lots 165 through 185 of MAP 5637 – HARBORVIEW HTS UNIT NO. 1 – LOTS 165-185
- Lots 153 through 164, Lots 186 through 189, AND Lots 206 through 208 of MAP 5637 – HARBORVIEW HTS UNIT NO. 1 – LOTS 153-164, 186-189, 206-208
- Lots 190 through 205, AND Lot A of MAP 5637 – HARBORVIEW HTS UNIT NO. 1 – LOTS 190-205 & A
- Lots 161 through 170 of MAP 5113 – WEST CLAIREMONT UNIT NO. 4 – LOTS 161-170
- Lots 157 through 160 of MAP 5112 – WEST CLAIREMONT UNIT NO. 3 – LOTS 157-160
- Lots 115 through 145 of MAP 4843 – WEST CLAIREMONT UNIT NO. 2 – LOTS 115-145
- Lots 102 through 114, AND Lots 146 through 156 of MAP 4843 – WEST CLAIREMONT UNIT NO. 2 – LOTS 102-114, 146-156
- Lots 3222 through 3233, Lots 3200 through 3210, Lots 3190 through 3199, AND Lots 3173 through 3182 of MAP 3145 – CLAIREMONT UNIT NO. 16
- Lots 3447 through 3453 AND Lots 3392 through 3396 of MAP 3145 – CLAIREMONT UNIT NO. 16 – LOTS 3387-3404, 3433, 3434, 3447-3453
- Lots 3435 & 3436 of MAP 3184 – CLAIREMONT UNIT NO. 16 ANNEX – LOTS 3465 & 3436

- Portion of Lots 3385 of MAP 3145 – CLAIREMONT UNIT NO. 16
- Portion of Lots 3385, Lots 3337 through 3351, AND Lots 3352 through 3380 of MAP 3145 – CLAIREMONT UNIT NO. 16
- Lots 2761 through 2769, Lots 2773 through 2785, 2786 through 2796, 2810 through 2818, AND 2819 through 2821 of MAP 2954 – CLAIREMONT UNIT NO. 12
- Lots 2829 through 2833, Lots 2826 through 2828, Lots 2803 through 2809, AND Lots 2797 through 2799 of MAP 2954 – CLAIREMONT UNIT NO. 12
- Lots 3183 through 3189, Lots 3211 through 3221, Lots 3245 through 3252, Lots 3381 through 3384, AND Lots 3454 through 3460 of MAP 3145 – CLAIREMONT UNIT NO. 16 – Lots 3183-3189, 3211-3221, 3245-3252, 3381-3384, 3454-3460
- Lots 3314 through 3326, Lots 3260 through 3295, AND Lots 3234 through 3244 of MAP 3145 – CLAIREMONT UNIT NO. 16
- Lots 3437 & 3438 of MAP 3184 – CLAIREMONT UNIT NO. 16 ANNEX – LOTS 3437 & 3438
- Lot 3386 AND Lots 3439 through 3446 of MAP 3145 – CLAIREMONT UNIT NO. 16 – Lots 3386, 3429-3432, 3439-3446
- Lots 3253 through 3259, Lots 3296 through 3313, Lots 3327 through 3336, AND Lots 3362 through 3375 of MAP 3145 – CLAIREMONT UNIT NO. 16 – Lots 3253-3259, 3296-3313, 3327-3336, 3362-3375
- Lots 2727 through 2741 of MAP 2954 CLAIREMONT UNIT NO. 12
- Lots 2742 through 2760 of MAP 2954 CLAIREMONT UNIT NO. 12

Said district shall also include the following public rights of way:

- KARNES WAY, PETERS WAY, CONNER WAY, CONNER COURT, HARTMAN WAY, NUTE WAY, HUNRICHS WAY, STOCHETT WAY, SLAYEN WAY, PLONE WAY, BRILLDEN COURT, FRYDEN COURT, DRISCOLL DRIVE, WAYNE LANE, NORTH STAR DRIVE, WHEAT STREET, EICHENLAUB STREET, RAFFEE STREET, PETUNIA COURT, HUERFANO AVENUE, MORAGA COURT, BARROWS STREET, TENSRAW PLACE, HUERFANO COURT, COURSER AVENUE, COURSER COURT, HOPI PLACE, LA CROOSE AVENUE, JICARILLO AVENUE, KEOKUK COURT, MILISA WAY, JAPPA AVENUE, INNUIT AVENUE, ATARI COURT
- CADDEN WAY from adjacent to Lot 97 of MAP 5936 – HARBORVIEW HTS UNIT NO. 3 to the intersection with Eichenlaub St

- LA JUNTA AVENUE from adjacent to Lot 2799 of MAP 2954 – CLAIREMONT UNIT NO. 12 to the intersection with Jicarillo Ave
- KAMLOOP AVENUE from adjacent to Lot 3435 of MAP 3184 – CLAIREMONT UNIT NO. 16 ANNEX to the intersection with Hopi Pl
- GEGGES DRIVE from adjacent to Lot 3337 of MAP 3145 – CLAIREMONT UNIT NO. 16 to the intersection with Moraga Ave
- MORAGA AVENUE from adjacent to Lot 3392 of MAP 3145 – CLAIREMONT UNIT NO. 16 to adjacent to Lot 2833 of MAP 2954 – CLAIREMONT UNIT NO. 12
- YUCCA AVENUE adjacent to Lot 40 of MAP 5423 – HARBORVIEW HTS UNIT NO. 2
- KAROK AVENUE from adjacent to Lot 2769 of MAP 2954 – CLAIREMONT UNIT NO. 12 to the dead end at Lots 157 through 160 of MAP 5112 WEST CLAIREMONT UNIT NO. 3
- AVATI DRIVE from intersection with Morena Bl of MAP 5723 – HARBORVIEW HTS UNIT NO. 7 to the intersection with Moraga Ct of MAP 5637 – HARBORVIEW HTS UNIT NO. 1 – LOTS 153-164, 186-189, 206-208.
- MORENA BOULEVARD from the westerly end of line with a direction of N 67° E in Lot 8 of MAP 8046 – MORENA INDUSTRIAL PARK to side with a direction of N 89° 32' 55" E in Lot 217 of MAP 5723 – HARBORVIEW HTS UNIT NO. 7.

WHEREAS, Exhibit Attachment RESIDENTIAL PROJECT BLOCK 6DD (BAY HO 3) Map, and Exhibit Attachment GENERAL BOUNDARY DESCRIPTION FOR PROJECT BLOCK 6DD (BAY HO 3) UNDERGROUND UTILITY DISTRICT Legal Descriptions, depict the above District with greater specificity; and

WHEREAS, notice of such hearing has been given by the Mayor to all affected property owners as defined in Chapter VI, Article One, Division Five of the San Diego Municipal Code, and the utilities concerned in the manner and for the time required by law; and

WHEREAS, such hearing has been duly and regularly held and all persons interested have been given an opportunity to be heard; NOW, THEREFORE,

BE IT RESOLVED, by the Council of the City of San Diego, as follows:


1. The City Council hereby finds and determines that the public health, safety, or general welfare requires the removal of poles, overhead wires, and associated overhead structures and the underground installation of wires and facilities for supplying electric, communication, community antenna television or similar or associated service within the areas set forth above and that pursuant to Chapter VI, Article One, Division Five of the San Diego Municipal Code, the above areas are hereby declared to be underground utility districts in the City of San Diego, and the maps and document referred to above are hereby incorporated as a part of this resolution.

2. The Mayor is hereby authorized to establish schedules for the underground conversion of all poles, overhead wires, and associated structures in said District.

3. The Mayor is hereby instructed to notify all affected persons as defined in Chapter VI, Article One, Division Five of the San Diego Municipal Code, and all affected utility companies of the adoption of this resolution within fifteen days after date of adoption. The Mayor shall further notify affected persons as defined in Chapter VI, Article One, Division Five of the San Diego Municipal Code of the necessity that if they desire to continue to receive electric, communication, community antenna television or similar or associated service, they shall permit the installation of all necessary facility changes on their premises, or provide such changes at their own expense, so as to receive underground service from the lines relocated underground of the supplying utility company subject to applicable rules, regulations, and tariffs of the respective utility company on file with the Public Utilities Commission of the State of

California (as of the date of the adoption of this resolution) and subject to all other applicable requirements of State law and City ordinances. The Mayor's notification shall be in the manner provided in Chapter VI, Article One, Division Five of the San Diego Municipal Code.


APPROVED: JAN GOLDSMITH, City Attorney

By   
Ryan Kohut  
Deputy City Attorney

RK:cfq  
11/04/10  
Or.Dept:E&CP  
Pro Law 2010-02667

I hereby certify that the foregoing Resolution was passed by the Council of the City of San Diego, at this meeting of JAN 25 2011.

ELIZABETH S. MALAND  
City Clerk

By   
Deputy City Clerk

Approved: 1.28.11  
(date)

  
JERRY SANDERS, Mayor

Vetoed: \_\_\_\_\_  
(date)

\_\_\_\_\_  
JERRY SANDERS, Mayor

099908 R 306560

EE

WHEAT ST

RAFFEE DR

AVANTI DR

HUERFANO AV

KARNES WY

PETERS WY

CONNER WY

HARTMAN WY

NUTE WY

HUNRICHS WY

STOCKETT WY

SLAYEN WY

PLONE WY

CONNER CT

BRILLDEN CT

FRYDEN CT

DRISCOLL DR

WAYNE LN

AVANTI DR

COURSER AV

KAMLOOP AV

GEDDES DR

HUERFANO AV

INNUIT AV

JAPPA AV

LACROSE AV

MORAGA AV

HOP I PL

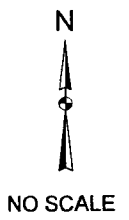
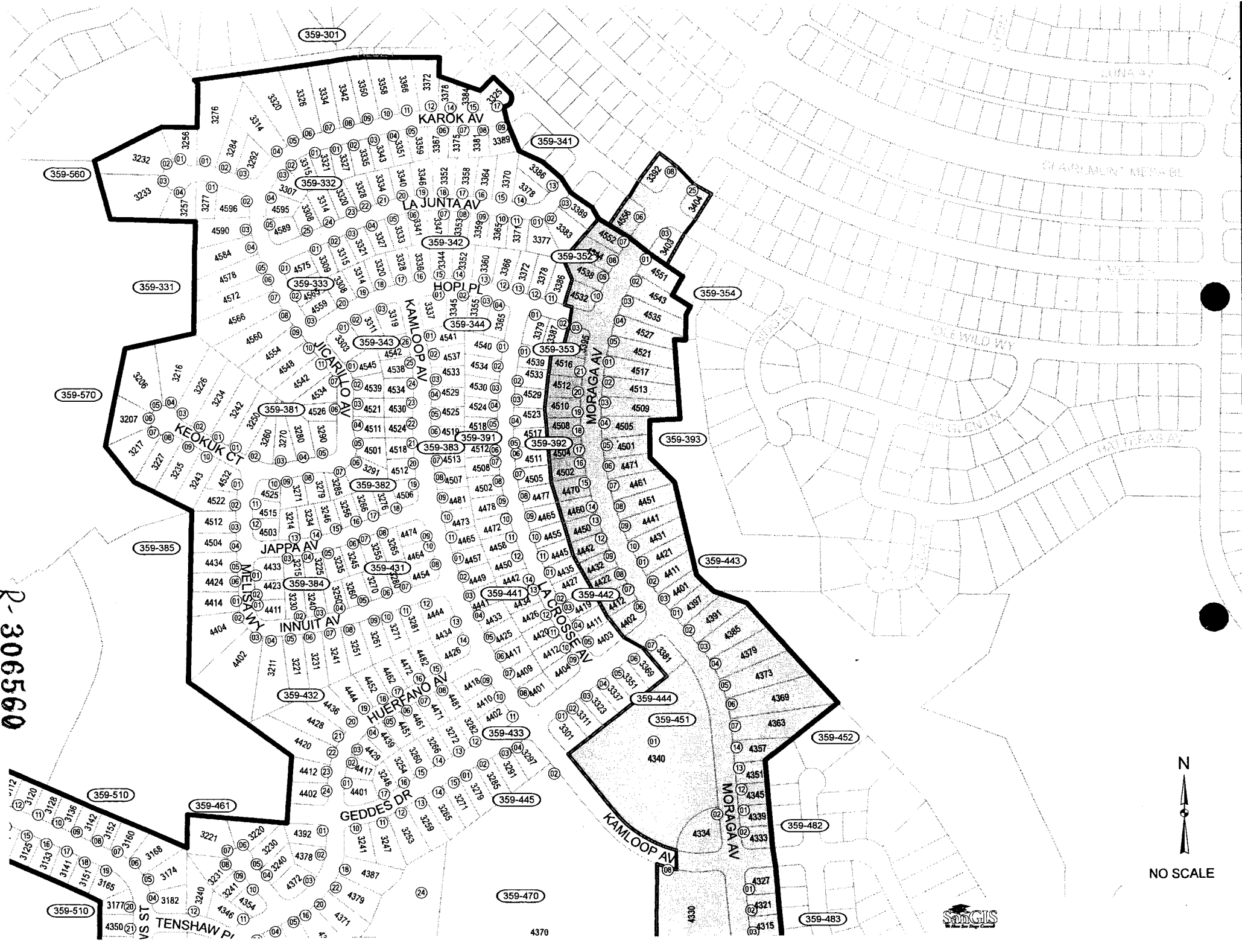
LA JUNTA AV

KAROK AV

SHEET TWO



R-306560

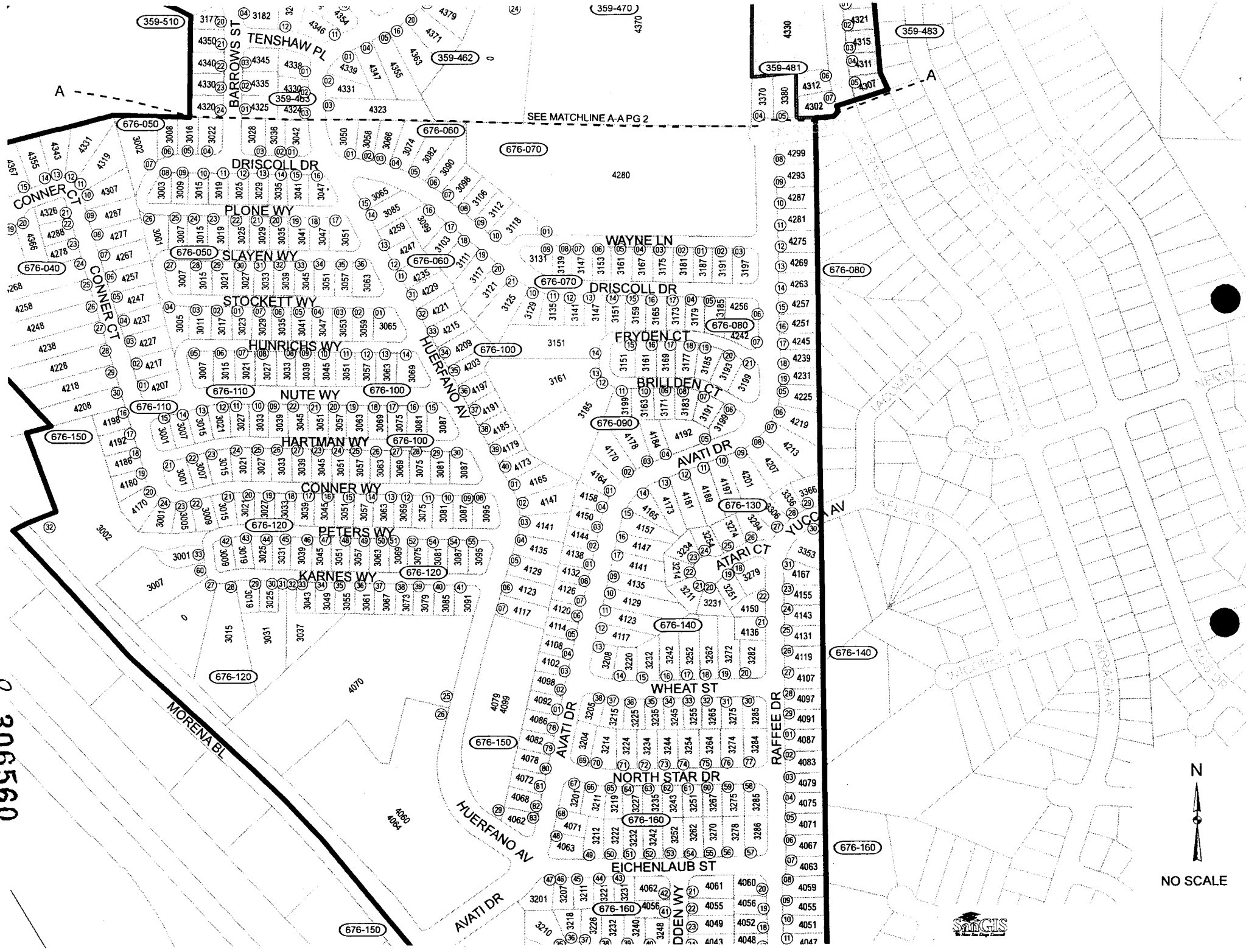


NO SCALE





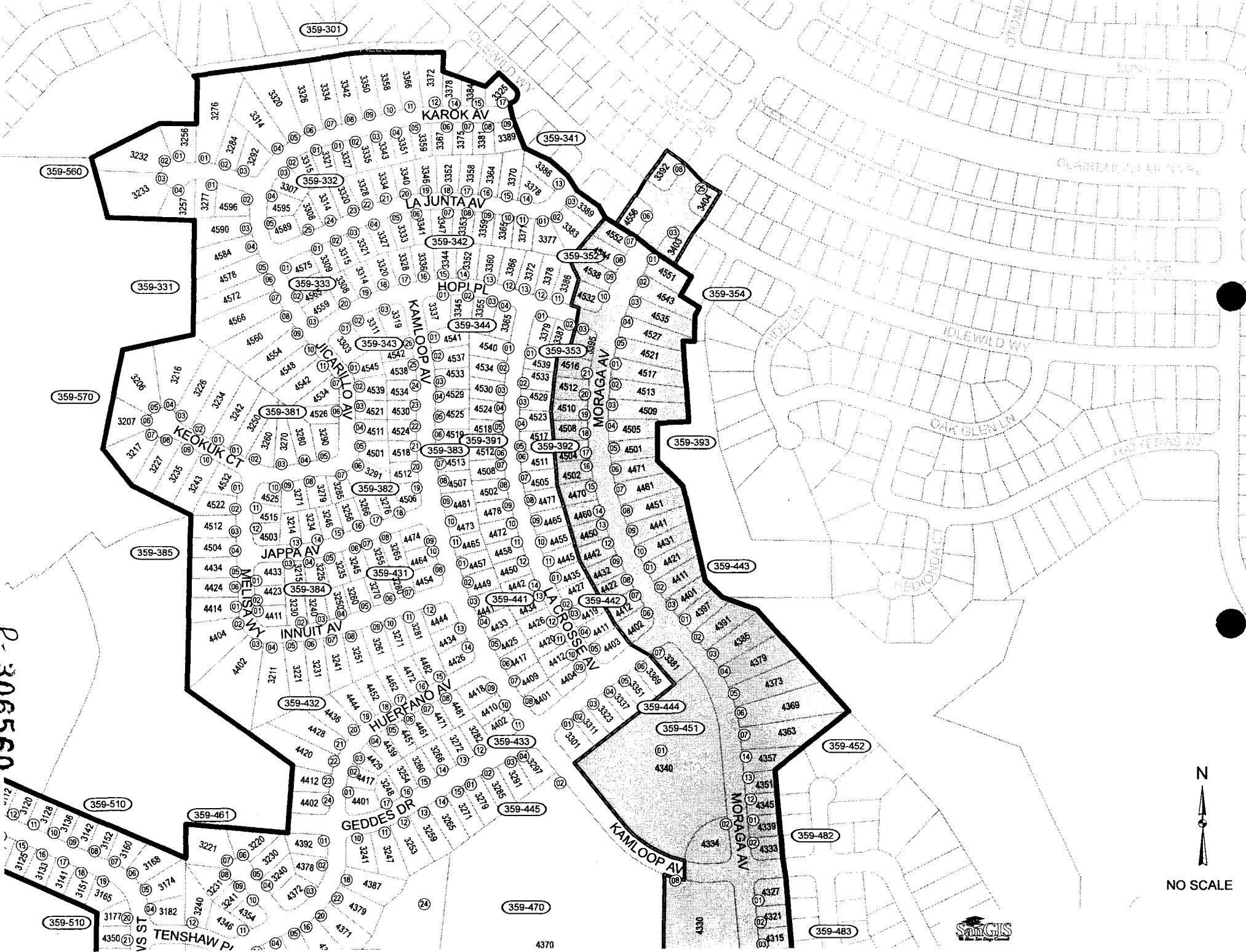
R-306560



NO SCALE



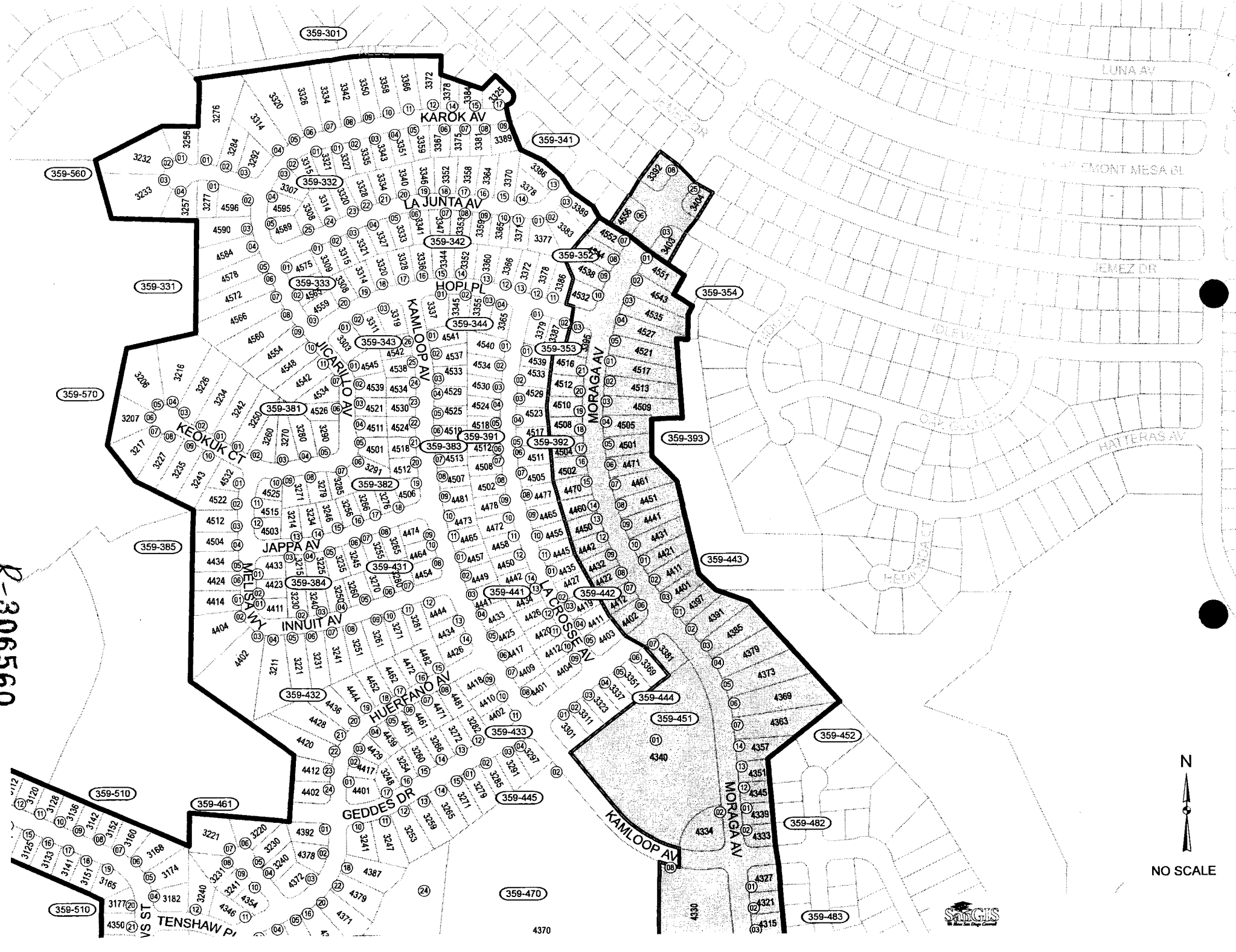
R-306560



NO SCALE



R-306560



LUNA AV

MONT MESA BL

JEMEZ DR

IDLEWELL

CAP GENOVA

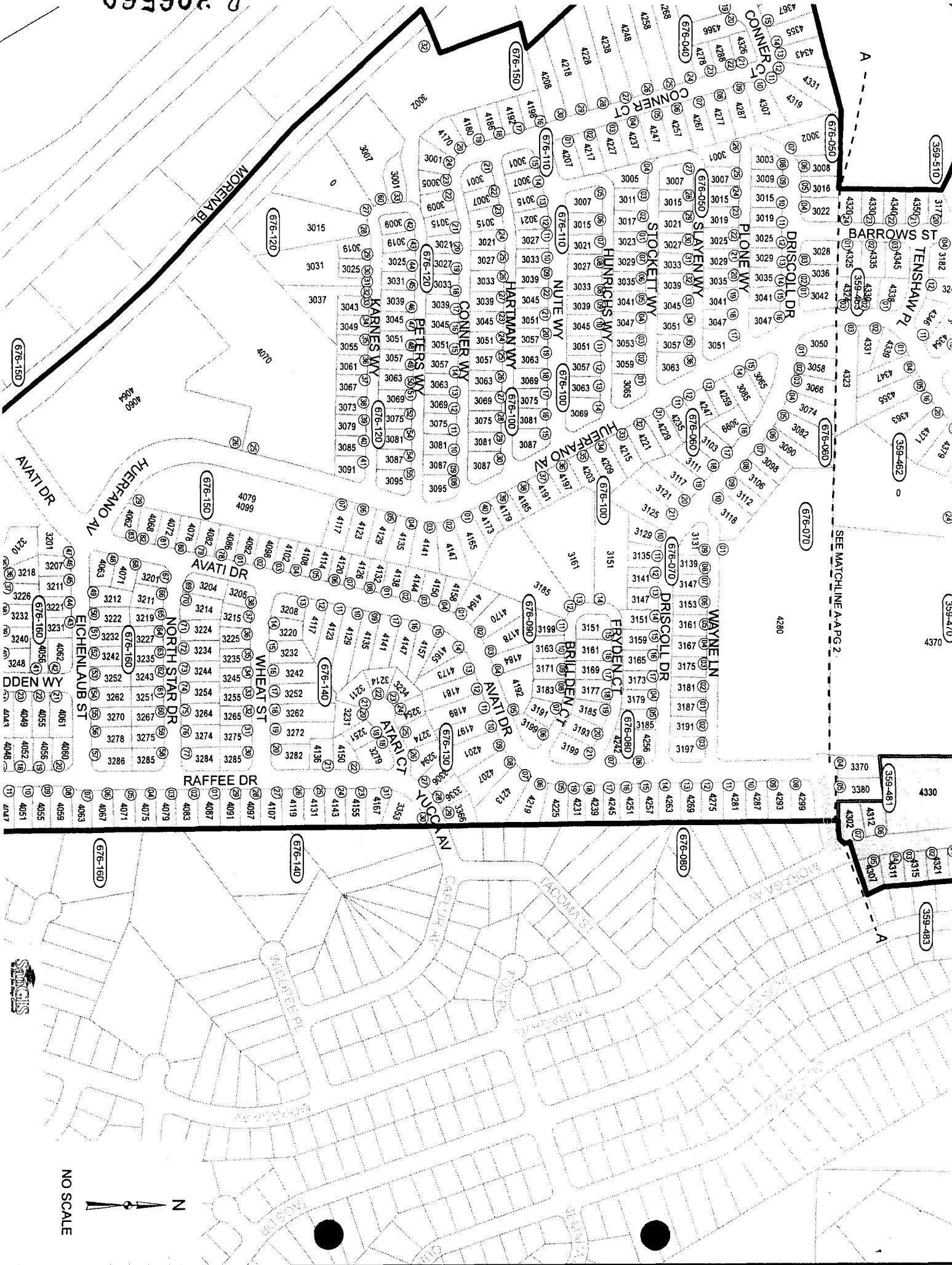
HATTERAS AV



NO SCALE



R-306560



NO SCALE

N



SEE MATCHLINE A-PAGE 2

A

A

3370

3380

3390

3400

3410

3420

3430

3440

3450

3460

3470

3480

3490

3500

3510

3520

3530

3540

3550

3560

3570

3580

3590

3600

3610

3620

3630

3640

3650

3660

3670

3680

3690

3700

3710

3720

3730

3740

3750

3760

3770

3780

3790

3800

3810

3820

3830

3840

3850

3860

3870

3880

3890

3900

3910

3920

3930

3940

3950

3960

3970

3980

3990

4000

4010

4020

4030

4040

4050

4060

4070

4080

4090

4100

4110

4120

4130

4140

4150

4160

4170

4180

4190

4200

4210

4220

4230

4240

4250

4260

4270

4280

4290

4300

4310

4320

4330

4340

4350

4360

4370

4380

4390

4400

4410

4420

4430

4440

4450

4460

4470

4480

4490

4500

4510

4520

4530

4540

4550

4560

4570

4580

4590

4600

4610

4620

4630

4640

4650

4660

4670

4680

4690

4700

4710

4720

4730

4740

4750

4760

4770

4780

4790

4800

4810

4820

4830

4840

4850

4860

4870

4880

4890

4900

4910

4920

4930

4940

4950

4960

4970

4980

4990

5000