

The top of the slide features a banner with a blue sky and water background. On the left is the official seal of the City of San Diego, which includes the text "SAN DIEGO STATE OF CALIFORNIA" and "SEMPER VIGILANS". To the right of the seal, the text "The City of San Diego" is written in a large, bold, black font, with "America's Finest City" in a smaller font below it. The background of the banner shows a panoramic view of the San Diego skyline across the water.

The City of  
**San Diego**  
America's Finest City

# Enterprise Asset Management (EAM) Program and Project Overview

Presentation for

City Council Infrastructure Committee

Item 11

July 22, 2015



# Overview

1. The Infrastructure Problem
2. Asset Management – The EAM **Program**
3. The Software Solution - The EAM **Project**
  - SAP EAM Solution
  - Riva Modeling - Asset Management Planning Tool



# How Big is the Problem?

Currently, there many disparate and outdated departmental systems and no effective approach for managing these assets citywide

Aging and deteriorating assets

Backlog of deferred maintenance and capital projects



# How Big is the Problem?

## The Multi-Year Capital Plan

<i>\$ in millions</i>	FY 2016	FY 2017	FY 2018	FY 2019	FY 2020	Total
Total Needs	\$632.1	\$805.8	\$733.9	\$808.9	\$892.4	\$3,873.1
Funding	425.3	528.7	359.0	348.8	501.9	2,163.8
Gap	\$206.7	\$277.1	\$374.9	\$460.1	\$390.5	\$1,709.3

The bottom line...

**We need a strategy to  
effectively manage our infrastructure assets**



# What is Asset Management?

A best practice for managing infrastructure capital assets to minimize the total cost of owning and operating them while delivering the desired service levels





# What is Asset Management?

Provides a mechanism to answer critical questions:

- What is the condition of our assets?
- What is the required sustainable level of service?
- Which assets are critical to sustained operations?
- What are our best maintenance and capital investment strategies?
- What is our best long-term funding strategy?



# EAM Program

Office of the DCOO,  
Infra/Public Works

Condition Assessments

Departmental AM Efforts

AM Strategy, Policy, and Plans

Other AM-related efforts  
(e.g. setting Service Level Standards)

## EAM Project

Implementation of  
Business Processes and  
Software Solution



# Why an Enterprise Asset Management (EAM) Solution/System?

A software tool is critical to implementing Asset Management, given the

- Large number of City assets
- Complex and significant amount of information that must be collected and analyzed
- Need to optimize the City's limited funds





# EAM - An Integrated Enterprise Solution

The City chose to implement the SAP EAM solution because it

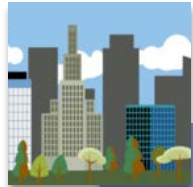
- Enables participating departments to integrate with existing SAP applications in the City
- Leverages existing investments in SAP
- Meets the City's asset management capability needs



# How are Other Governments and Utilities Managing Their Infrastructure Assets?

- Many large cities/organizations have implemented an EAM System
- Many city/organizations in the San Diego region have implemented/are implementing EAM Systems

# US Cities/Organizations Using SAP EAM



## Cities

- City of Phoenix, AZ
- City of San Antonio, TX
- City of San Luis Obispo, CA
- City of Tacoma, WA
- City of Toledo, OH
- City of Dallas, TX



## Counties

- Clark County, NV
- County of Bernalillo, NM
- Collier County, FL
- Monroe County
- Erie County, NY
- Snohomish County, WA



## Other Public Sector

- Port of San Diego
- Colorado DoT
- Commonwealth of Pennsylvania
- Penn DoT
- PA Turnpike
- North Carolina DoT
- CA Dept. Water Resources
- San Diego Metro Transit System
- Harris County Metro, TX



# The EAM Project - A Citywide Strategic Initiative

Departments In Phase 1	Division
Public Utilities	Water Systems Operation
	Water Construction and Maintenance
	Wastewater Treatment and Disposal
	Wastewater Collection
	Customer Support Division
	Engineering and Program Management
Public Works	Engineering and Capital Projects
	Facilities
	Publishing Services
Transportation and Storm Water	Storm Water
	Streets
	Transportation Engineering and Operations
Information Technology	Wireless Technology



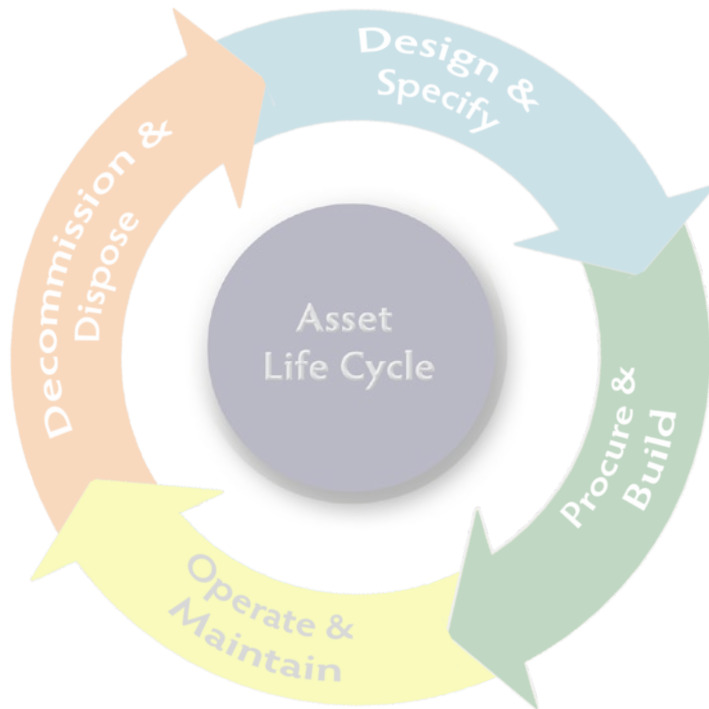
# Consultant Support for EAM Project

- SAP consultants on board early
- Business Process Consultant
- Systems Integrator

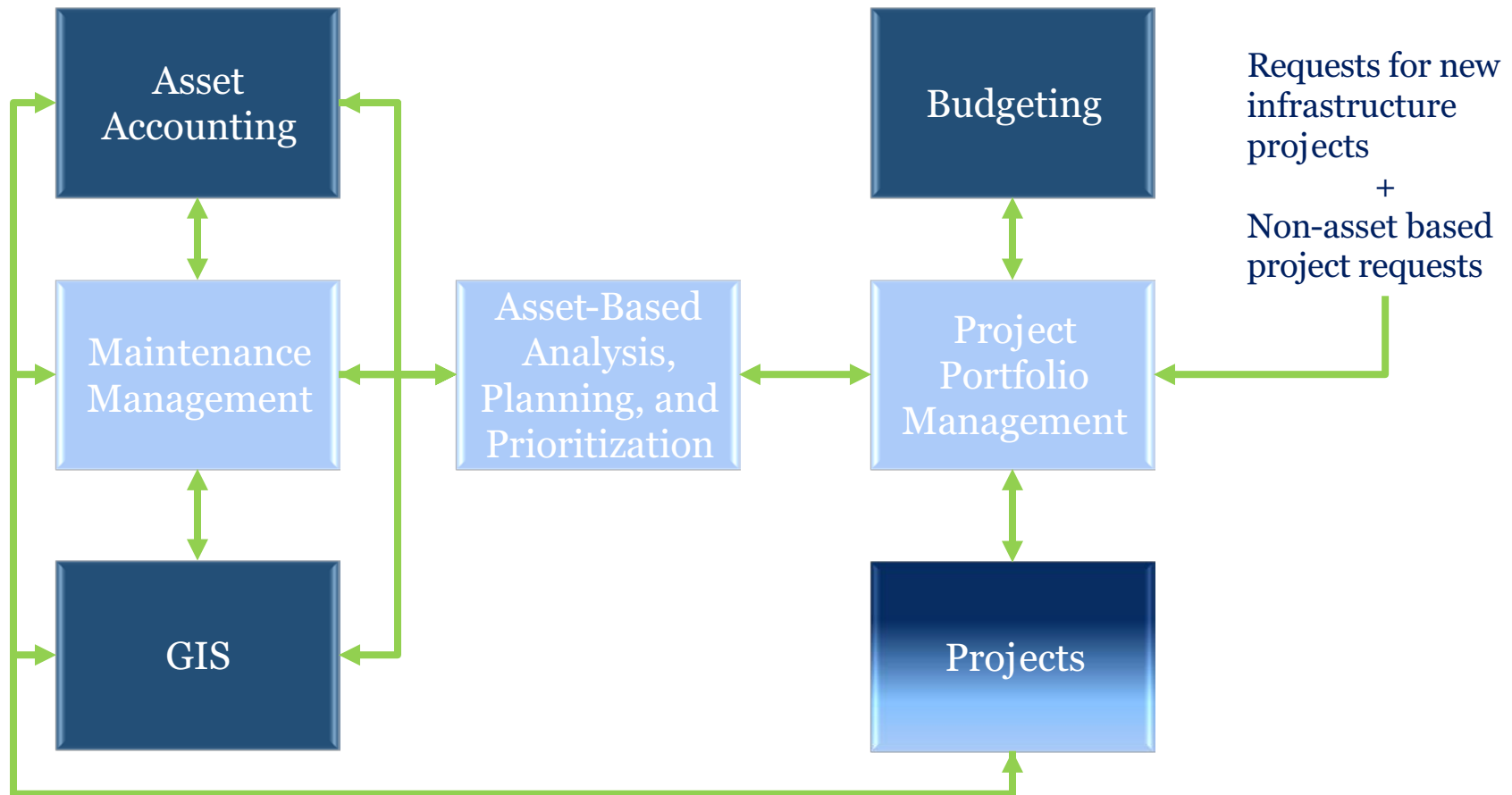
## Project Pilots

- SAP 3D Visual Enterprise
- Riva Modeling

# SAP Enterprise Asset Management

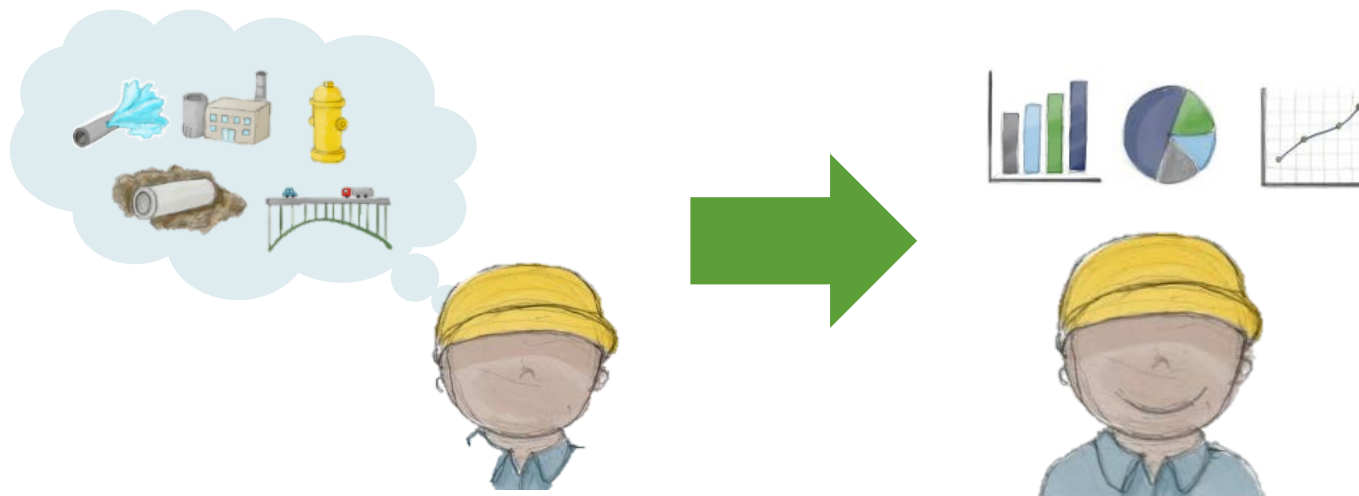


# Asset-Based Infrastructure Planning



# Asset Management Planning (AMP)

- Comprehensive and integrated software solution using a risk-based approach to support long-range infrastructure asset management planning, decision making and optimization activities







# The Riva Core Solution: Planning for Assets and Projects

The Solution:

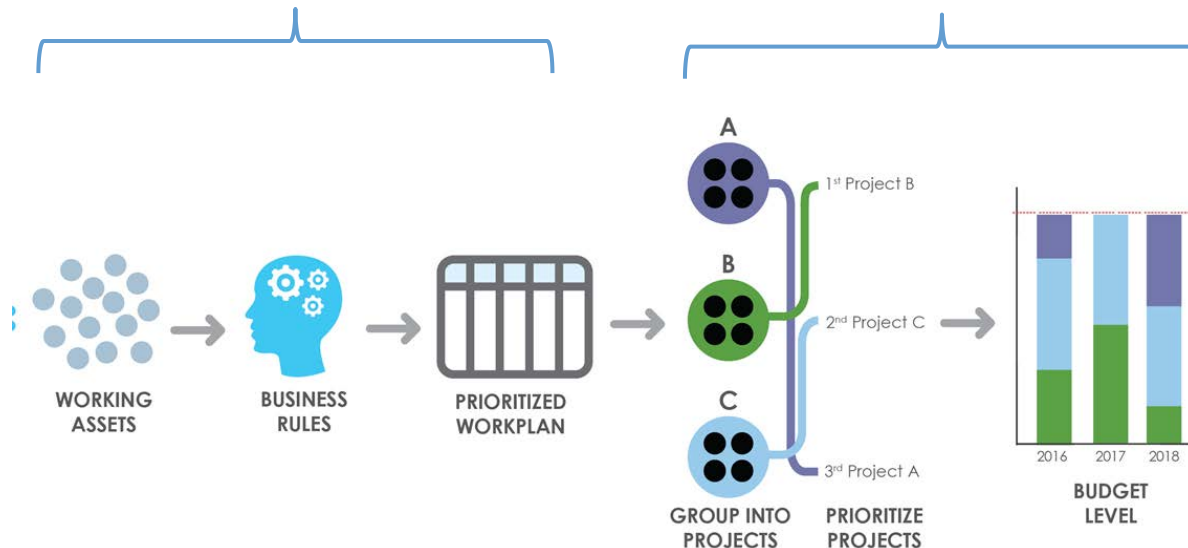


What's  
Managed:

**ASSETS**

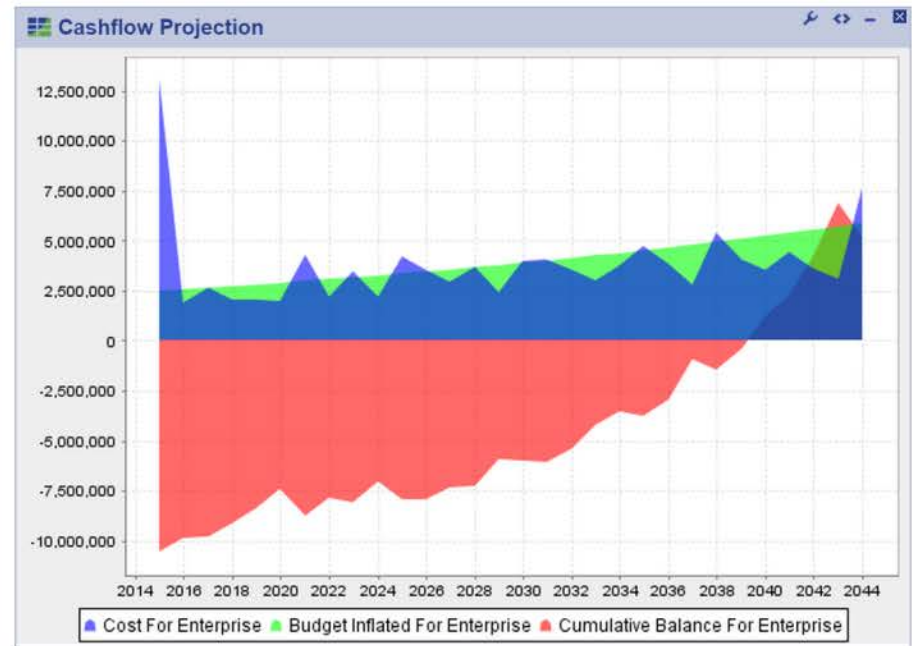
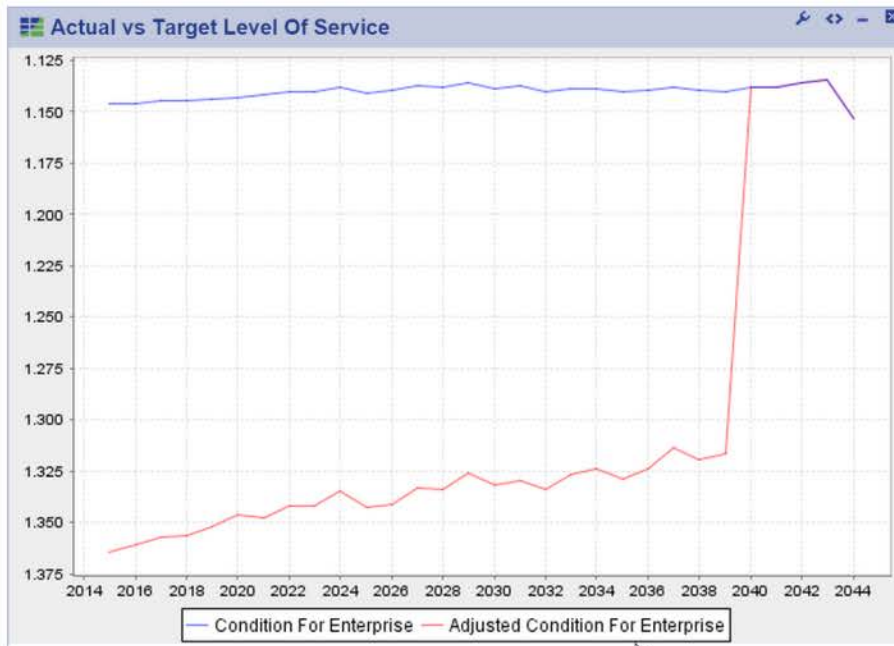
**PROJECTS**

The  
Workflow:





# Planning Tools



**Budget Setting**

Short Description Annual Budget Growth Rate (%)

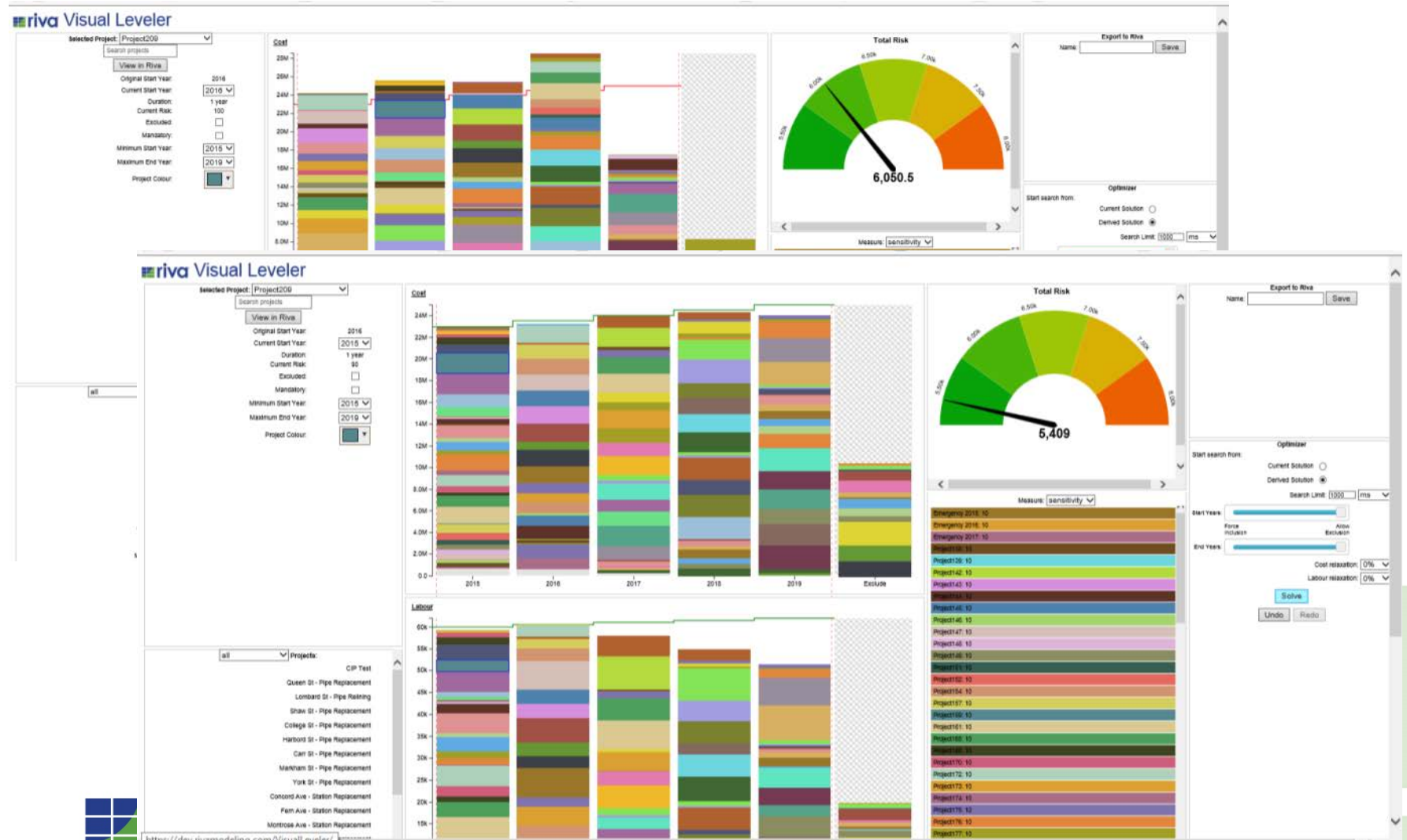
Enterprise	2,500,000	3
------------	-----------	---

Showing all 1 rows.

[Refresh list and discard changes](#)

# Optimization

How can we best spend our limited funds to most effectively manage our infrastructure assets?





# Questions?

End



# The City's EAM Project

<b>Phase 1 – Participating Departments</b>	<b>Phase 1 – Impacted Departments</b>	<b>Future Phases</b>
<ul style="list-style-type: none"><li>• Department of Information Technology</li><li>• Public Utilities</li><li>• Public Works</li><li>• Transportation &amp; Storm Water</li></ul>	<ul style="list-style-type: none"><li>• Development Services</li><li>• Financial Management</li><li>• Office of the Comptroller</li><li>• Purchasing &amp; Contracting</li><li>• Office of the Treasurer</li></ul> <p><b>Ongoing Coordination</b></p> <ul style="list-style-type: none"><li>• Open Data</li><li>• GIS</li><li>• CRM/311 and Code Compliance</li><li>• Docs Management</li><li>• Condition Assessments</li><li>• DSD PTS Replacement</li></ul>	<p><b>Met with Staff</b></p> <ul style="list-style-type: none"><li>• Environmental Services</li><li>• Fire-Rescue (Equipment)</li><li>• Park &amp; Recreation</li></ul> <p><b>Pending Meetings</b></p> <ul style="list-style-type: none"><li>• Library</li><li>• Police</li><li>• Public Works - Fleet Services</li><li>• Real Estate Assets (Property Management)</li></ul>



# Riva Sites by Industry

## Public Sector

City of Burnaby  
City of Brandon  
City of Calgary  
Halton Region  
City of Ottawa  
City of Abbotsford  
Halifax Regional Municipality  
City of Kitchener  
City of Prince George  
County of Simcoe  
City of Toronto  
City of Kamloops  
County of Lambton  
Region of Peel  
York Region  
Medicine Hat  
Tauranga  
Oakland County  
DC Gov



## Water

WSSC  
Mei Netanya  
Akron Water  
Virginia Beach  
Charleston Water System  
HERA

## Electric

ActewAGL  
EWEB  
Oakville Hydro

## Gas

Enbridge Gas Distribution  
HERA

# Riva Sites by Geographic Region







## Washington Suburban Sanitary Commission manages \$15 billion worth of net assets with Riva

- Automated 30-year capital plan is always up to date
- Need for external consultants greatly reduced
- Flexible solution supports continuous improvement through configuration
- Oracle and Esri environments





## City of Toronto, Parks, Forestry & Recreation uses Riva to plan and monitor capital projects for assets valued in excess of \$5.5 billion

- Source inventory system for all assets
- Integration to GIS for spatial views and asset updates
- Automated budget fitting and transparent prioritization
- Up-to-the-minute project and expenditure tracking



## City of Toronto, Facilities and Real Estate, uses Riva for Long-Range Planning of over 400 Buildings (\$3B Net value)

- Consistency and improved data quality
- SAP PM & SAP RE integration linked Capital Planning and Operations
- Automated budget fitting and transparent prioritization
- One-click BCA report generation in minutes instead of weeks