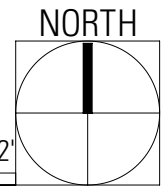
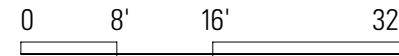


CONCEPT PLANS  
**BASEMENT PARKING GARAGE**



DATE 2/3/09

**Bayside Fire Station**

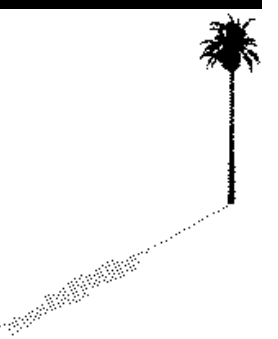
1595 Pacific Highway  
 San Diego, California 92101

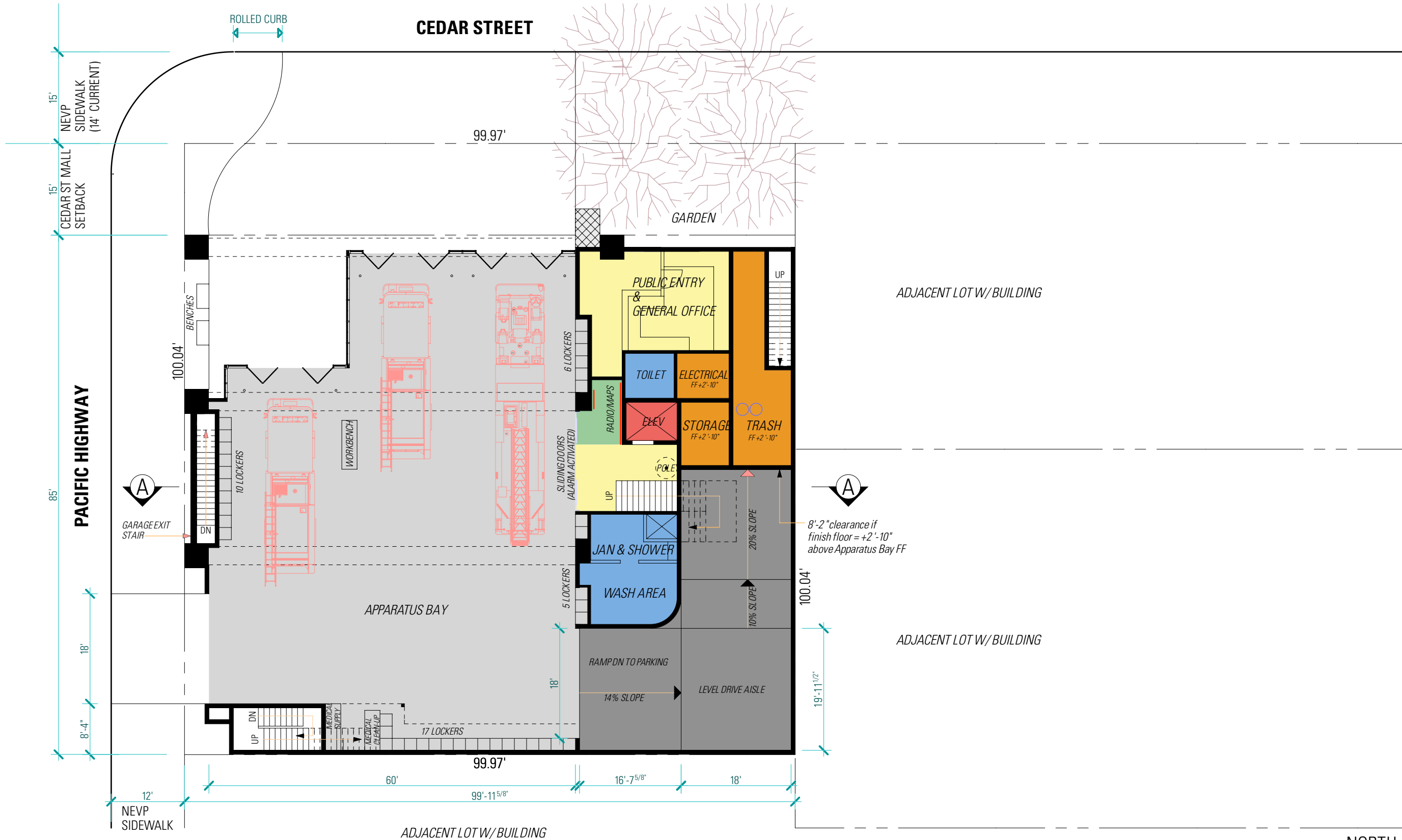
**Rob Wellington Quigley, FAIA**

*in association with*

**Don Dommer Associates**

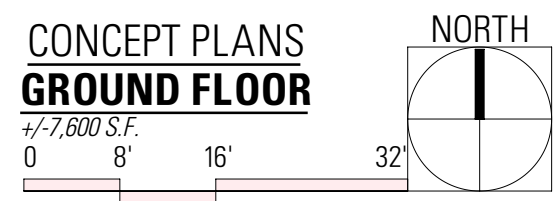
434 West Cedar Street  
 San Diego, California 92101  
 T (619) 232 0888  
 F (619) 2328966





**Rob Wellington Quigley, FAIA**  
*in association with*  
**Don Dommer Associates**  
 434 West Cedar Street  
 San Diego, California 92101  
 T (619) 232 0888  
 F (619) 2328966

**Bayside Fire Station**  
 1595 Pacific Highway  
 San Diego, California 92101

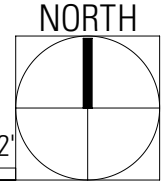


DATE 2/3/09



CONCEPT PLANS  
**SECOND FLOOR**

+/-2655 S.F.  
 0 8' 16' 32'



DATE 2/3/09

**Bayside Fire Station**

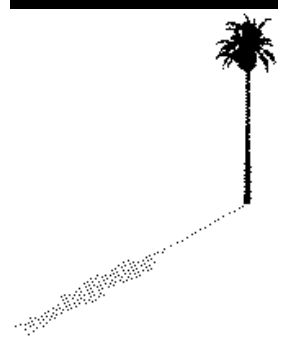
1595 Pacific Highway  
 San Diego, California 92101

**Rob Wellington Quigley, FAIA**

*in association with*

**Don Dommer Associates**

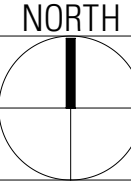
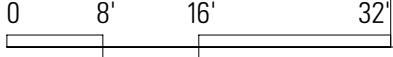
434 West Cedar Street  
 San Diego, California 92101  
 T (619) 232 0888  
 F (619) 2328966





CONCEPT PLANS  
**THIRD FLOOR**

+/-5,090 S.F.



DATE 2/3/09

**Bayside Fire Station**

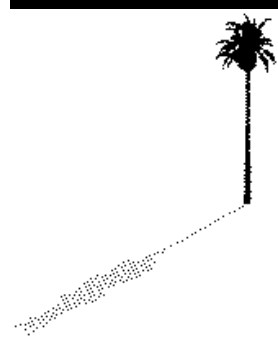
1595 Pacific Highway  
 San Diego, California 92101

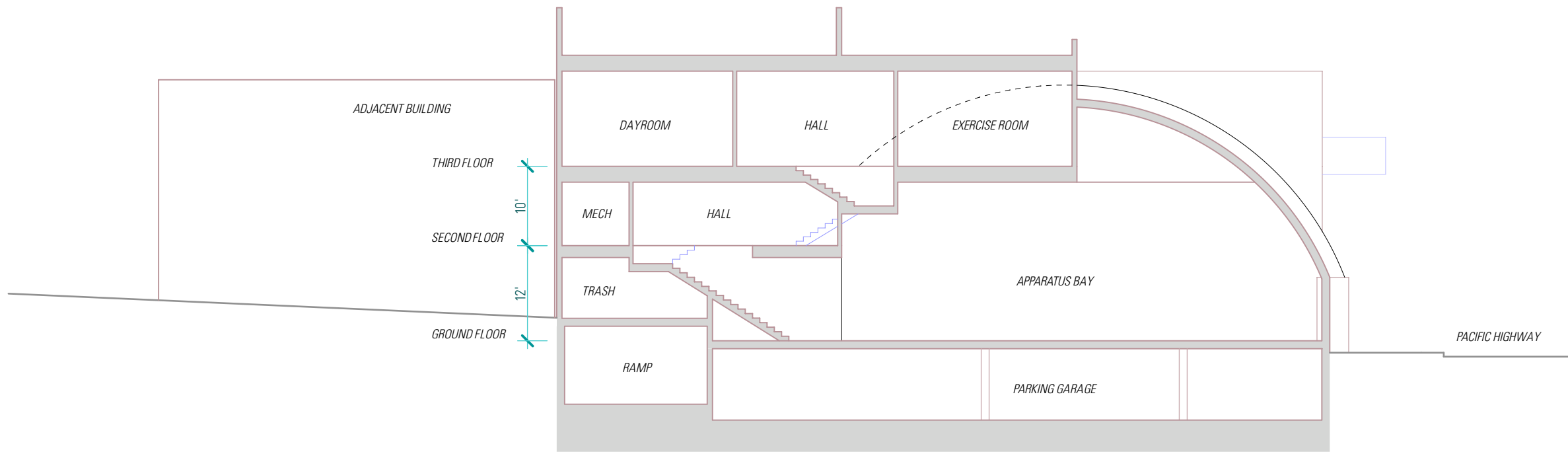
Rob Wellington Quigley, FAIA

*in association with*

**Don Dommer Associates**

434 West Cedar Street  
 San Diego, California 92101  
 T (619) 232 0888  
 F (619) 2328966





CONCEPT PLAN SECTION 'A'  
BAYSIDE FIRE STATION

**SECTION 'A'**

DATE 2/3/09

5

**Bayside Fire Station**  
 1595 Pacific Highway  
 San Diego, California 92101

**Rob Wellington Quigley, FAIA**  
*in association with*  
**Don Dommer Associates**  
 434 West Cedar Street  
 San Diego, California 92101  
 T (619) 232 0888  
 F (619) 2328966

