



THE CITY OF SAN DIEGO

MEMORANDUM

DATE: January 18, 2011

TO: Natural Resources and Culture Committee – Agenda of February 2, 2011

FROM: Roger Bailey, Director of Public Utilities

SUBJECT: Monthly Update on Conservation and Water Use Restrictions

Since the first month of implementation of mandatory use restrictions in San Diego in June 2009, the Public Utilities Department staff has provided the City Council's Natural Resources and Culture Committee with monthly updates on compliance efforts and resulting reductions in water use. For Fiscal Year 2010, water usage citywide was 11% lower than usage during the previous year, meeting the 8% reduction target set by the San Diego County Water Authority (CWA). In Fiscal Year 2011, the CWA called for the same usage reduction target of 8%. This update summarizes water usage in the City of San Diego for this Fiscal Year through December 31, 2010. It also includes the current water supply outlook and the latest information on water waste compliance.

Water Supply Outlook

December was recorded as one of the wettest in history. A total of 5 inches of rain fell on Lindbergh Field, compared to 1.3 inches of normal rainfall for the month of December. The following summarizes the reservoir levels, snowpack and rainfall totals at sources within the City's water supply system, as of January 9, 2011:

- Storage levels at California Department of Water Resources reservoirs have increased compared to the previous year.
 - Oroville is at 64% of capacity compared to 29% last year.
 - Shasta is at 75% of capacity compared to 41% last year.Both reservoirs are at or above their average storage levels.
- Snowpack water content in the Sierras is at 199% of average. This time last year, snow content was 81% of average statewide.
- Metropolitan Water District of Southern California's Diamond Valley Lake is 80% full, compared to 48% from last year.

January 18, 2011

- According to the United States Bureau of Reclamation, inflow into Lake Powell is a useful barometer of drought conditions in the Colorado River Basin. Lake Powell inflow has been below average every year since 1999, excluding water years 2005 and 2008.
 - Lake Mead is 40% full (at 1,086 feet elevation)
 - Lake Powell is 58% full
- City of San Diego reservoirs are 63% full. Work on raising the San Vicente Dam is still in progress.
- As of January 9, 2011, recorded rainfall in San Diego Lindbergh Field is at 8.37 inches total for the season. Average annual rainfall is 10.77 inches.

While the water supply system benefitted from abundant rainfall and snow in December, the National Weather Service’s Climate Prediction Center predicts below normal precipitation for San Diego and most of California from February to April 2011. Should this occur, the effects of the wet season to date will be balanced off by drier months ahead.

Water Use Reduction

Chart A shows how overall usage in the City has trended in the last three years. Usage in 2010 was significantly lower than 2008 (prior to mandatory water conservation), and generally lower than 2009 usage except for January, June and July when usage was at the same level, and September, when usage was slightly higher than 2009. San Diego experienced several record hot days in September.

Chart A – Total Consumption (AF)

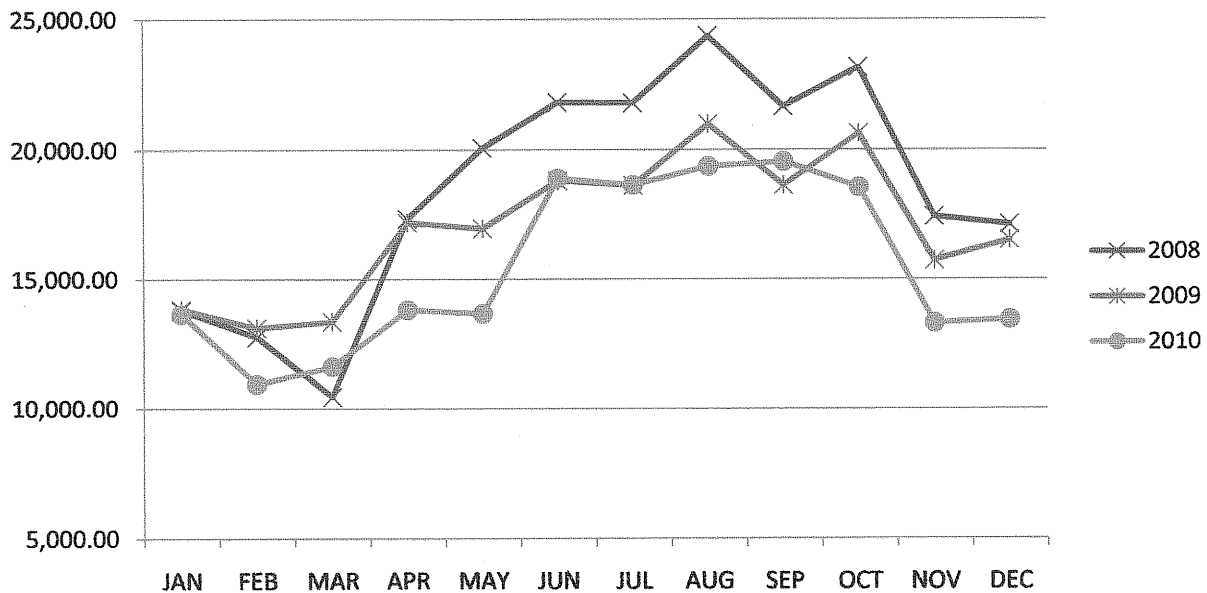
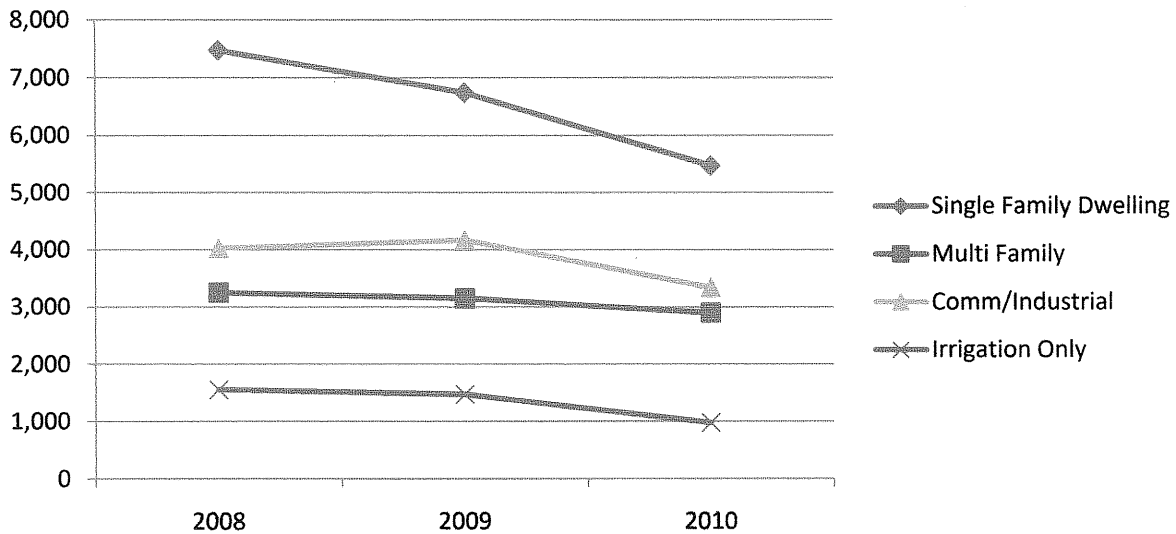


Chart B – Billed Consumption in a December (AF)

Chart B below shows how the major customer categories used water in December 2010, as compared to the same period from previous years. Usage dropped significantly compared to the last two previous years, primarily due to a very wet December.

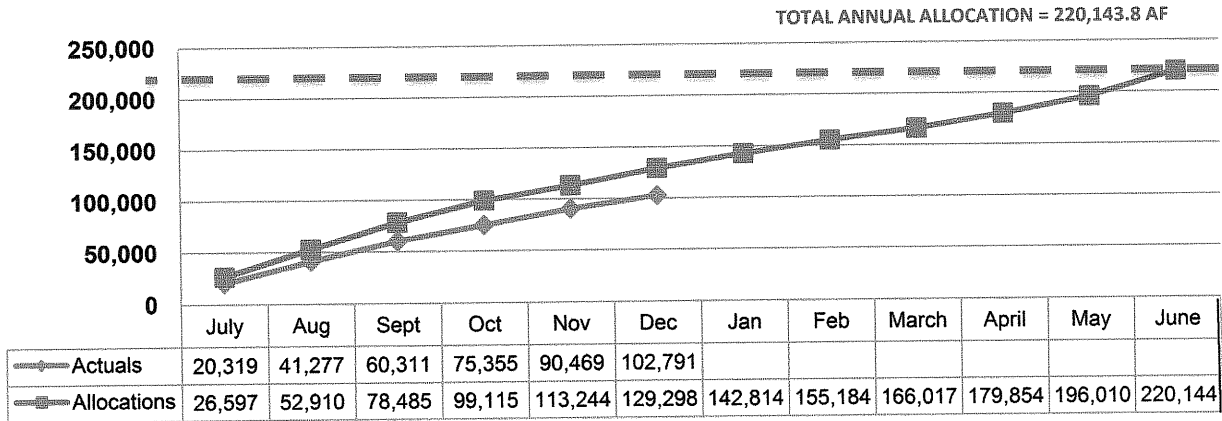


December 2010 water usage by City departments was 29.3% lower than usage a year ago.

Meeting the CWA Allocation

The City of San Diego’s Fiscal Year 2011 total allocation from the CWA is 220,143.8 acre-feet (AF) in water deliveries. Chart C shows this annual target broken down into monthly targets and, when comparing the actual water deliveries through December to the monthly targets, the City is 20% below its allocation target.

Chart C – Water Deliveries Target



Water Waste Enforcement

With regards to water waste enforcement, more than 7,269 complaints were received through December 31, 2010, since the restrictions began in June 2009. A total of 98 cases have been referred to Code Enforcement Officers due to non-action, and one citation carrying a \$100 fine was issued.

R. S. Bailey
 Roger S. Bailey
 Director of Public Utilities

LSG/lsg

- cc: J. Brent Eidson, Assistant Director, Intergovernmental Relations
- Alex Ruiz, Assistant Public Utilities Director
- Marsi Steirer, Deputy Director, Long Range Planning and Water Resources
- Mike Vogl, Deputy Director, Customer Support
- Luis Generoso, Water Resources Manager