

# The Chollas Creek Regional Park

## A Unique and Special Park for One San Diego



Groundwork  
**SAN DIEGO**  
*Chollas Creek*



**April 10<sup>th</sup>, 2015**  
**Committee on the Environment**

**Leslie Reynolds, Executive Director**  
**Vicki Estrada, Board Member**



Groundwork  
**SAN DIEGO**  
*Chollas Creek*

## Who We Are

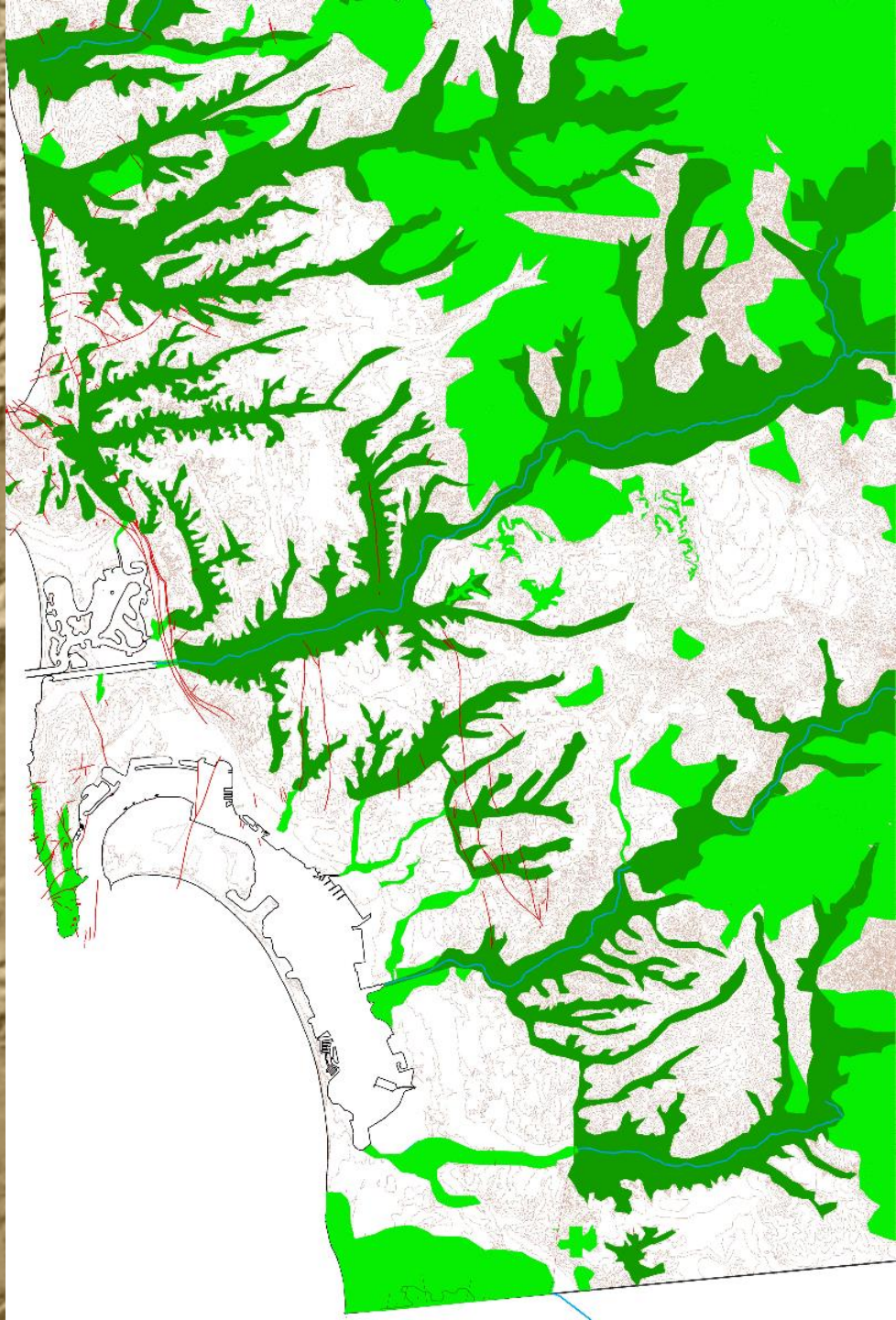
Non-profit environmental organization

Community-based Board of Directors

Affiliate of Groundwork USA

Manager, Chollas Creek Watershed

**Our Canyons and  
Watersheds define us!**

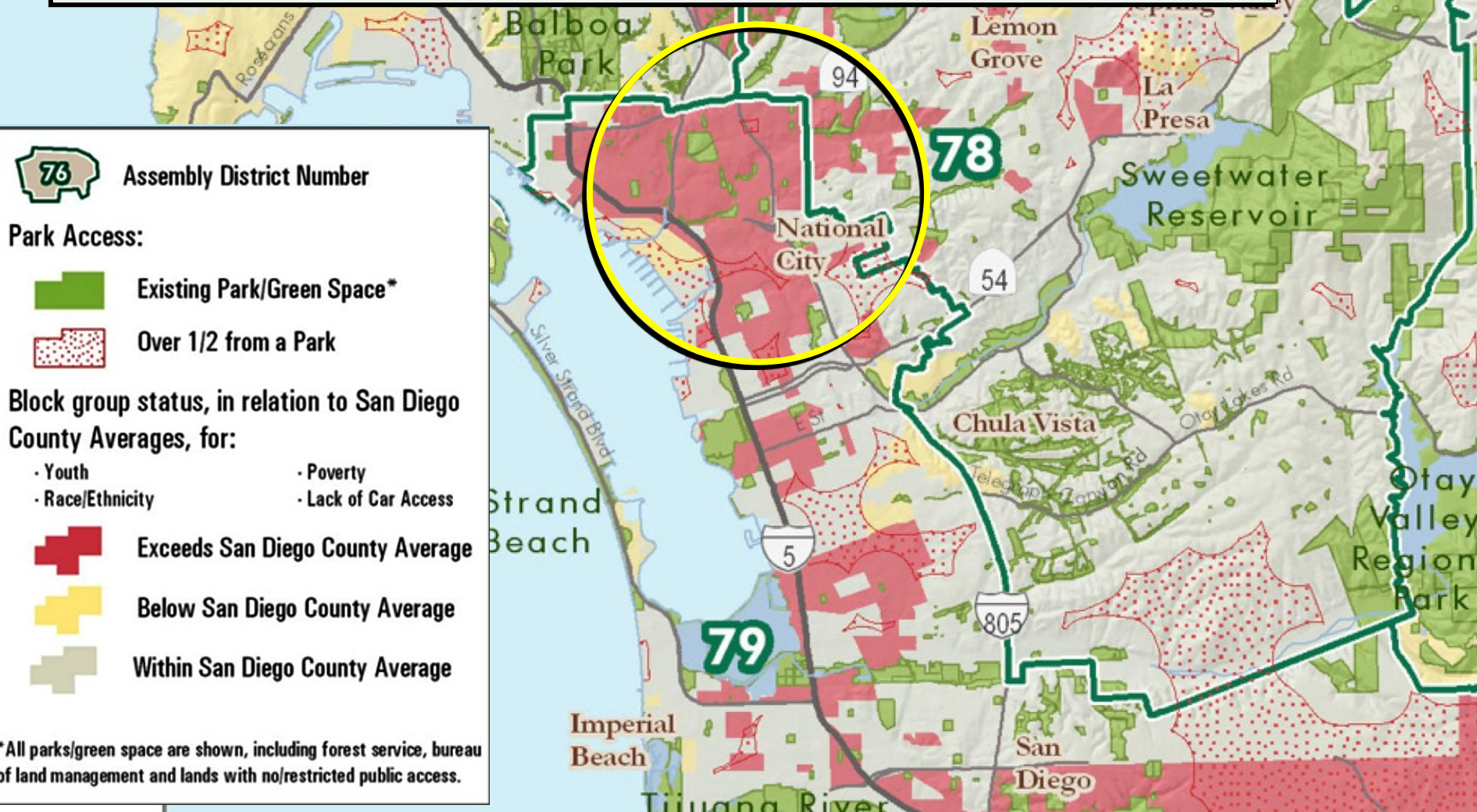


## The Pueblo Watershed (and the Chollas Watershed within it)



# Current Park Access for Children of Color Living in Poverty with No Access to a Car

## THE REGIONAL PARK WOULD INCREASE PARK ACCESS



# Trail Connectivity

Connectivity is currently disjointed and incomplete.

A regional park infrastructure would Help complete these connections.

- Completed
- Underway
- No Trail

0.5

Miles

NORTH

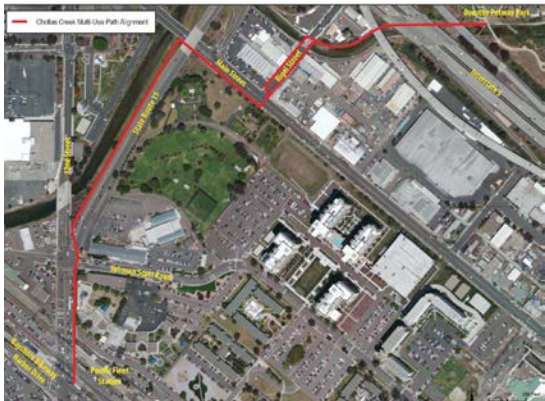


Phase 2

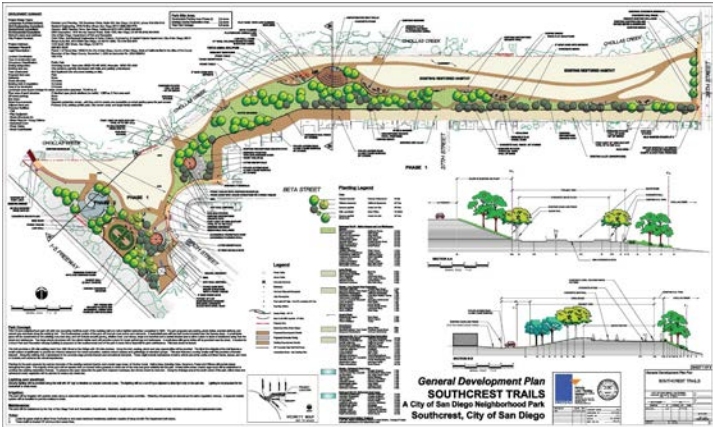
Phase 1

Possible Idea For Chollas Creek Regional Park

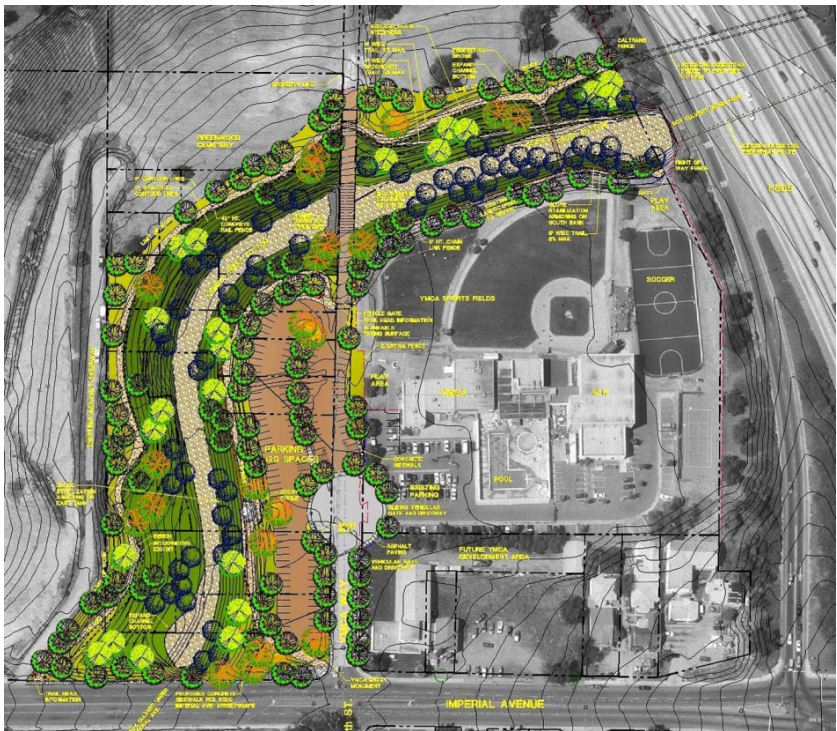
# Some of the Current and Proposed Projects within the Regional Park Area



Chollas Creek Bayshore Bikeway Trail



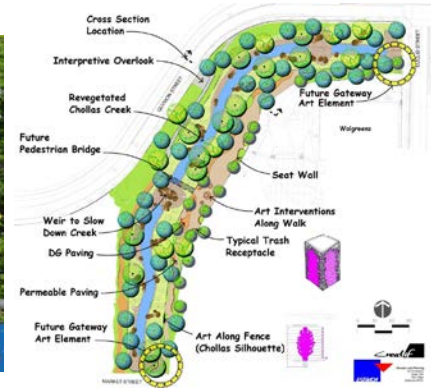
Southcrest Park



Jackie Robinson YMCA



Chollas Creek Crossing



**Chollas Lake and South Chollas**

**Jacobs Center - Activating the Creek**



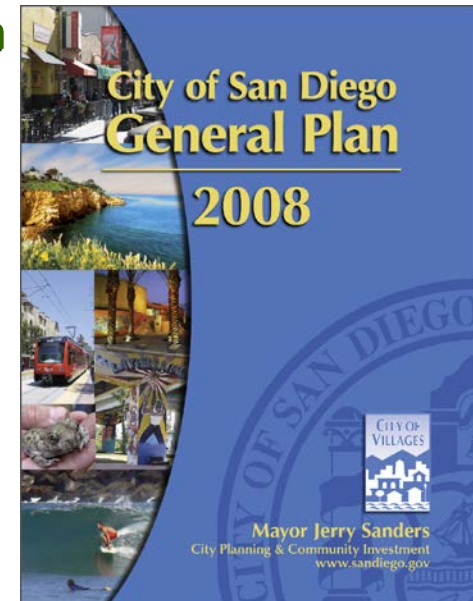
**Earthlab**



**KSON TowerParkSite**

### Guidelines

- Serves regional resident and/or visitor population
- Developed amenities should not impair the distinctive features or resources
- Provides habitat and resource protection
- Development for recreation use is typically controlled by a master plan



### Typical Components

- Located at the site of distinctive scenic, natural, historical or cultural features
- Resource-based Parks such as Balboa Park, Mission Bay Park, and Sunset Cliffs Natural park
- Regional Parks such as Mission Bay and Otay Valley

# From the General Plan

## F. Open Space Lands and Resource-Based Parks

### Goals

- ◆ An open space and resource-based park system that provides for the preservation and management of natural resources, enhancement of outdoor recreation opportunities, and protection of the public health and safety.
- ◆ Preservation of the natural terrain and drainage systems of San Diego's open space lands and resource-based parks.
- ◆ A system of pedestrian, bicycle, and equestrian paths linking communities, neighborhoods, parks, and the open space system.

RE-F.6. Encourage the planning and coordination of river parks to provide public recreational opportunities, protect natural resources, and enhance community character.

RE.F-7. Create or enhance open space multi-use trails to accommodate, where appropriate, pedestrians/hikers, bicyclists, and equestrians.

- a. Develop, adopt and maintain updates of a citywide Trails Master Plan or Parks Master Plan which incorporates trails master planning to guide the provision of and enhancement of open space multi-purpose trails.
- b. Enhance public access to public open space by clearly identifying trailheads and trail alignments which are consistent with MSCP preservation goals.
- c. Locate canyon and other open space trails to take advantage of existing pathways and maintenance easements where possible and appropriate.

Median Market Value PSF by Walking Distance from Parks, 2011 \$ and % change from 2003				
Walking Distance from the Park	Central Park West		Central Park East	
	2011 \$ psf	% change from 2003 <sup>1</sup>	2011 \$ psf	% change from 2003
	Within 5 minutes	\$474 73%	\$801 44%	
	5 to 10 minutes away	\$421 71%	\$714 50%	
Over 10 minutes	N/A	N/A	\$1,826 96%	
Walking Distance from the Park	Prospect Park		Highline – Hudson Yards to Union Square	
	2011 \$ psf	% change from 2003 <sup>1</sup>	2011 \$ psf	% change from 2003
	Within 5 minutes	\$305 410%	\$301 103%	
	5 to 10 minutes away	\$313 421%	\$144 19%	
Over 10 minutes	\$142 470%	\$200 33%		

## Economic Value of Urban Parks

- **Driving Economies**
- **Significant Savings**



## Environmental Value

- **Healthy Habitats**
- **Reducing Carbon Footprints**
- **Measurable Benefits**



## Community Value

- **A Sense of Pride**
- **Urban Renewal**



## Educational Value

- Environmental Education
- To Protect and Conserve



## Public Health Value

- **Healthy Parks Equal Healthy People**
- **People Breathe Easier**

## Excerpts from the Draft Encanto Community Plan

### COMMUNITY VISION

Encanto Neighborhoods residents envision their community as a scenic, vibrant and healthy community recognized as a jewel in San Diego. The Encanto Neighborhoods will be known for their panoramic views, unique arts and culture, night life and entertainment, employment, education, and housing opportunities. The community will enjoy new mixed-use transit-oriented development and a diversity of housing types clustered close to the intermodal transit stations. Historic single family neighborhoods in the northern and eastern parts of the community enjoy a semi-rural “country living in the city” atmosphere. The community will boast great parks and high-quality recreational facilities including multi-use trails along Chollas Creek, area canyons and other open spaces. The community will offer opportunities for high educational attainment and an overall unmatched quality of life and environment for children to learn, play and grow, nurturing the next generation of great community leaders.

### GUIDING PRINCIPLES

1. Celebrate Encanto Neighborhoods’ cultural diversity by fostering inclusive neighborhoods that are known as a destination for arts, culture, food and entertainment.
2. Maintain the overall dominant single-family character of the community while focusing new transit-oriented development at densities high enough to attract new investment and foster revitalization around the 62nd Street, Euclid Avenue, and 47th Street inter-modal transit stations as well as along key walkable, mixed-use, nodes on the Imperial Avenue and Market Street corridors.
3. Promote active living and healthy lifestyles by furthering access to trails and open spaces, creating walkable and safe neighborhoods, promoting fresh food choices and urban agriculture, and establishing community gardens.
4. Foster high educational attainment for the younger generations by creating additional educational and employment opportunities.
5. Enhance opportunities for neighborhood commerce and retail uses, encouraging well-paying employment-oriented uses and emphasizing creative enterprises.
6. Restore and enhance the open space network that is formed by parks, canyons, and Chollas Creek corridors.
7. Improve the community’s streets and sidewalks, above ground and underground utilities, parks, and other public infrastructure in order to promote a safe and attractive public realm.
8. Create an environment of economic opportunity, and flexibility to adapt to changing circumstances.
9. Develop sustainable practices for new development, mobility, water, and energy conservation, in order to reduce greenhouse gas emissions.

# GOALS

1. A sustainable park and recreation system that meets the needs of a variety of users such as children, the elderly, persons with disabilities, and the underserved teenage population
2. A comprehensive plan for pedestrian and bikeway connections between parks and open space lands within Encanto Neighborhoods as well as to surrounding communities
3. A comprehensive plan for open space system preservation and management of Chollas Creek and area canyons
4. Accessible bicycle and pedestrian trail corridors along Chollas Creek
5. A program to incentivize the provision of publicly accessible, but privately maintained open space as part of new development
6. Provision of expanded recreational opportunities through joint use or leasing of public and private facilities.

Encanto Neighborhoods.

Chollas Radio Canyon and the  
of Chollas Creek are recom-  
basis for an interconnected sys-  
along Chollas Creek and routes  
apes. Improved wayfinding sig-  
ch as benches, shade structures,  
ative panels would enhance the  
enjoyment of nature, and could  
divalency. A second trail system  
on Open Space can provide a  
community to Valencia Park El-

cemeteries provide valuable vi-  
environment. The approximate-  
Cemetery is not publicly owned  
ot identified as park land, but  
usual relief and other open space  
y's northwestern corner.

## and Resource-based Park

Open Space and Trail System. Place a kiosk at  
trailheads that has a map of how the canyon  
interfaces with Encanto Neighborhoods,  
and interpretive signs on the biological and  
scenic value of the open space system.

**P-RE-22:** Construct new trails within Encanto Neigh-  
borhoods' as shown on Figure 7-3 Open  
Space and Trail System.

**P-RE-23:** Provide trails with benches and overlook(s),  
where appropriate, to ensure that all resi-  
dents of the community can enjoy open  
space in Encanto Neighborhoods.

**P-RE-24:** Prepare a comprehensive management plan  
for the management and preservation of  
Chollas Creek open space system and area  
canyons.

**P-RE-25:** Prepare a comprehensive study analyzing  
Chollas Creek's outstanding, distinctive natu-  
ral, cultural or historic resources of a regional  
nature for consideration of designation as a  
Regional Park.

**P-RE-26:** Implement recommendations contained in  
the Chollas Creek Enhancement Plan and the  
Euclid+Market Land Use and Mobility Plan.

# The Chollas Creek Regional Park

## A Unique and Special Park for One San Diego

### Questions?

