

**Article 2: Overlay Zones**

**Division 6: Sensitive Coastal Overlay Zone**

*(Added 12-9-1997 by O-18451 N.S.; effective 1-1-2000.)*

**§132.0601 Purpose of the Sensitive Coastal Overlay Zone**

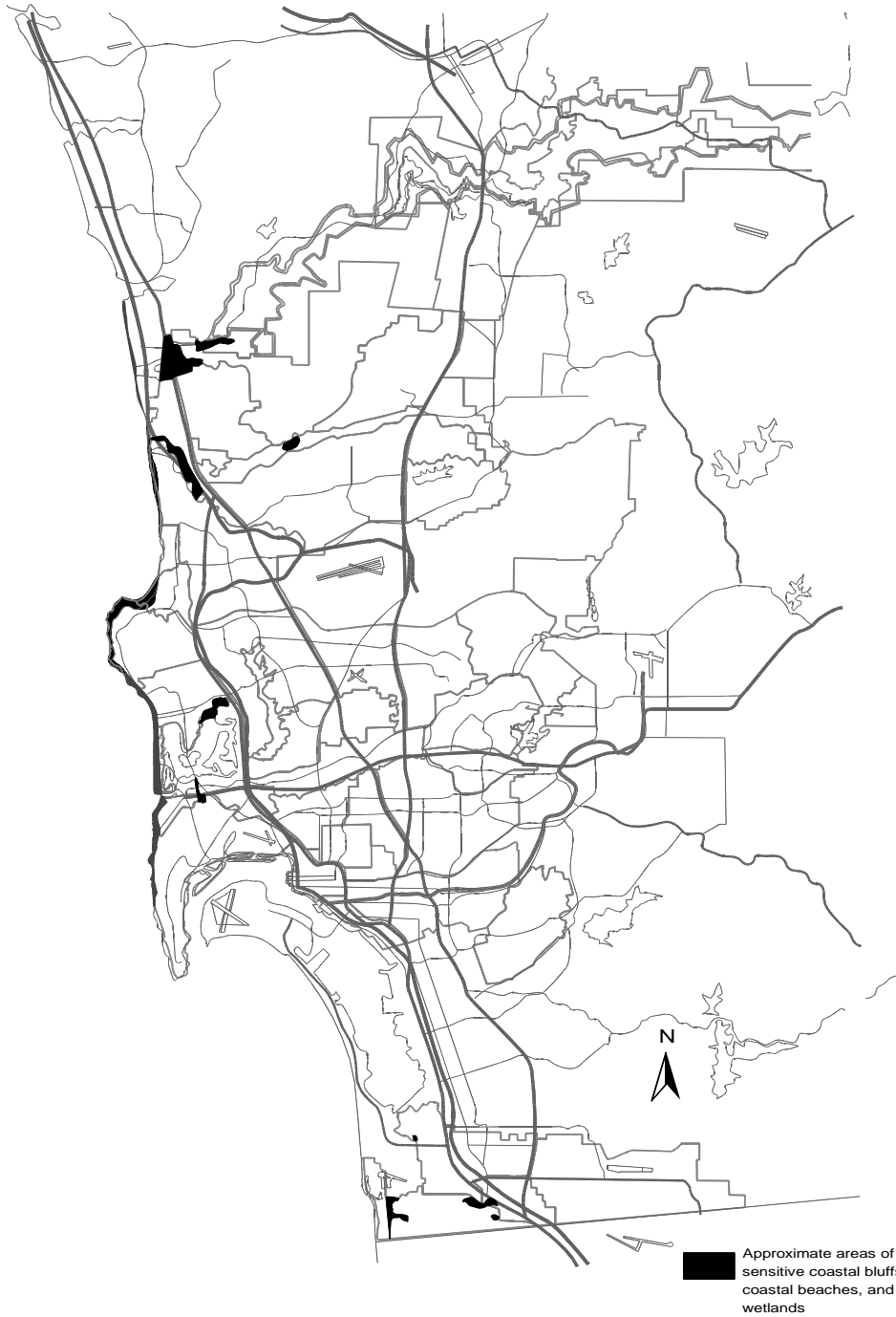
The purpose of the Sensitive Coastal Overlay Zone is to help protect and enhance the quality of *sensitive coastal bluffs, coastal beaches, and wetlands*.  
*(Added 12-9-1997 by O-18451 N.S.; effective 1-1-2000.)*

**§132.0602 Where the Sensitive Coastal Overlay Zone Applies**

- (a) This overlay zone applies to all *sensitive coastal bluffs, coastal beaches, and wetlands* located within the boundaries designated on Map No. C-713, filed in the office of the City Clerk as Document No. 00-17062. These areas are shown generally on Diagram 132-06A.
- (b) Where any portion of a parcel is located within the Sensitive Coastal Overlay Zone, this division shall apply to all portions of the parcel that are in the Coastal Overlay Zone as described in Chapter 13, Article 2, Division 4. This division shall not apply to any property or portion thereof that is removed from the Coastal Overlay Zone through proper legislative authority.
- (c) Table 132-06A shows the sections that contain the supplemental regulations and the type of permit required by this division, if any, for specific types of *development* proposals in this overlay zone.

**Table 132-06A  
Sensitive Coastal Overlay Zone Applicability**

Type of <i>Development</i> Proposal	Supplemental Development Regulations	Required Permit Type/ Decision Process
Any <i>development</i> on property wholly or partially within this overlay zone	See the <i>environmentally sensitive lands</i> regulations in Section 143.0110	See Section 143.0110



**DIAGRAM 132-06A**  
**Sensitive Coastal Overlay Zone**  
This is a reproduction of Map No. C-713 for illustration purposes only.

Ch. Art. Div.

13	2	6	2
----	---	---	---

*(Added 12-9-1997 by O-18451 N.S.; effective 1-1-2000.)*